

DISTRICT I  
P.O. Box 4960, Hobbs, NM 88240

State of New Mexico  
Energy, Minerals and Natural Resources Department

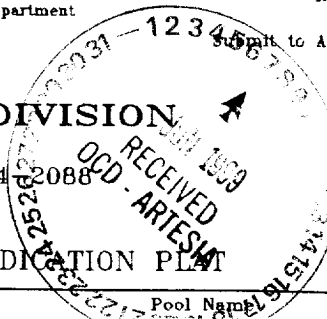
Form C-102  
Revised February 10, 1994  
Instruction on back  
Submit to Appropriate District Office  
State Lease - 4 Copies  
Fee Lease - 3 Copies

DISTRICT II  
P.O. Drawer DD, Artesia, NM 88210

DISTRICT III  
1000 Rio Brazos Rd., Aztec, NM 87410

OIL CONSERVATION DIVISION

P.O. Box 2088  
Santa Fe, New Mexico 87504



☐ AMENDED REPORT

WELL LOCATION AND ACREAGE DEDICATION PLAT

API Number 30015 29776	Pool Code 82775	Pool Name UNDES PENASCO DRAW PERMO PENN
Property Code 24343	Property Name Southern Cross "16" State	Well Number 1
OGRID No. 166111	Operator Name CONCHO RESOURCES INC. ✓	Elevation 3800'

Surface Location

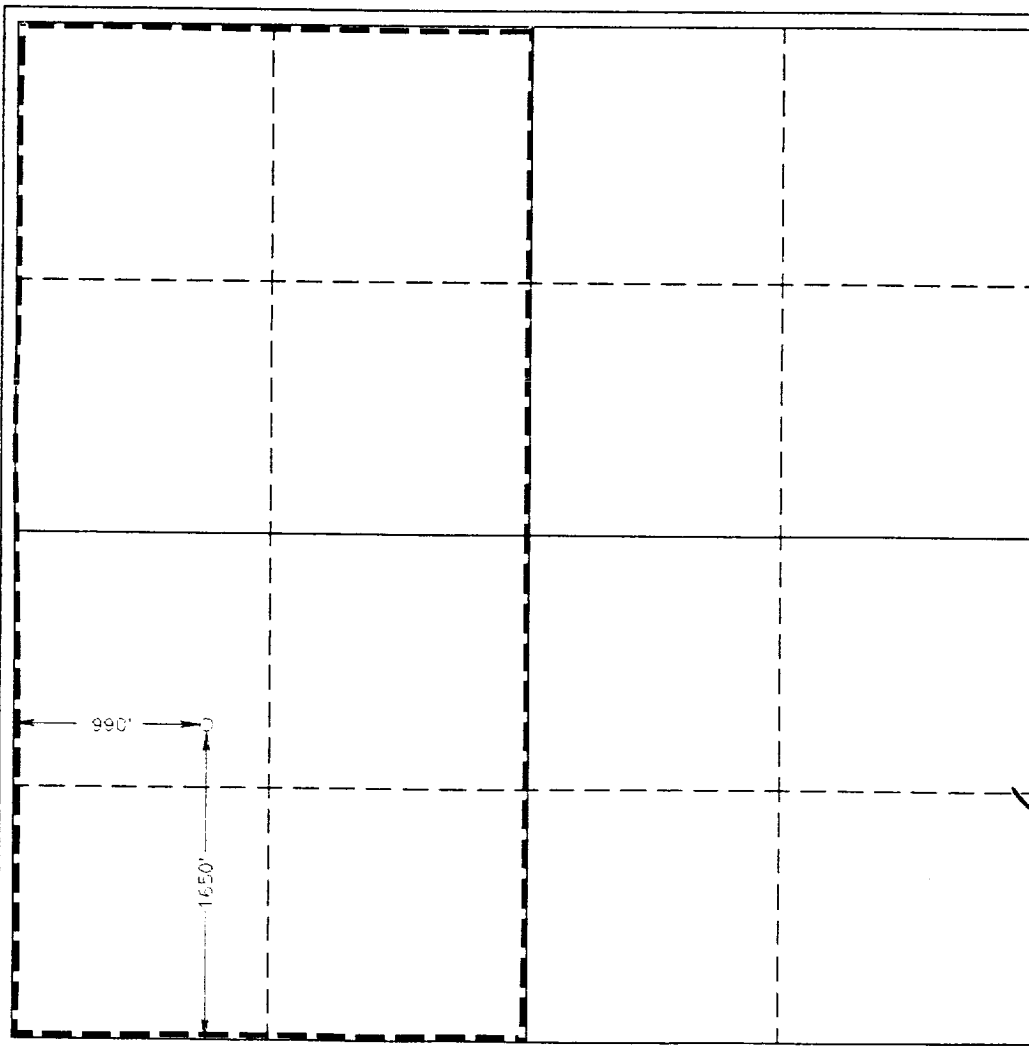
UL or lot No. L	Section 16	Township 18 S	Range 24 E	Lot Idn	Feet from the 1650	North/South line South	Feet from the 990	East/West line West	County Eddy
--------------------	---------------	------------------	---------------	---------	-----------------------	---------------------------	----------------------	------------------------	----------------

Bottom Hole Location If Different From Surface

UL or lot No.	Section	Township	Range	Lot Idn	Feet from the	North/South line	Feet from the	East/West line	County
---------------	---------	----------	-------	---------	---------------	------------------	---------------	----------------	--------

Dedicated Acres 320	Joint or Infill	Consolidation Code	Order No.
------------------------	-----------------	--------------------	-----------

NO ALLOWABLE WILL BE ASSIGNED TO THIS COMPLETION UNTIL ALL INTERESTS HAVE BEEN CONSOLIDATED  
OR A NON-STANDARD UNIT HAS BEEN APPROVED BY THE DIVISION



OPERATOR CERTIFICATION

I hereby certify the the information  
contained herein is true and complete to the  
best of my knowledge and belief.

*Joe T Janica*  
Signature

Joe T. Janica

Printed Name

Agent

Title

August 14, 1997

Date

SURVEYOR CERTIFICATION

I hereby certify that the well location shown  
on this plat was plotted from field notes of  
actual surveys made by me or under my  
supervision, and that the same is true and  
correct to the best of my belief.

August 14, 1997

Date Surveyed

Signature & Seal of JONES  
Professional Surveyor

*Gary L Jones*  
W.O. Num. 74408

Certificate No. GARY L JONES 7377