

DISTRICT I  
P. O. Box 1980  
Hobbs, NM 88241-1980

State of New Mexico  
Er Minerals, and Natural Resources ment

Form C-102  
Revised 02-10-94  
Instructions on back

DISTRICT II  
P. O. Drawer DD  
Artesia, NM 88211-0719

**OIL CONSERVATION DIVISION**  
P. O. Box 2088  
Santa Fe, New Mexico 87504-2088

Submit to the Appropriate  
District Office  
State Lease - 4 copies  
Fee Lease - 3 copies

☐ AMENDED REPORT

DISTRICT III  
1000 Rio Brazos Rd.  
Aztec, NM 87410

DISTRICT IV  
P. O. Box 2088  
Santa Fe, NM 87507-2088

**WELL LOCATION AND ACREAGE DEDICATION PLAT**

1 API Number <b>30-015-29790</b>		2 Pool Code <b>03610</b>	3 Pool Name <b>ATOKA SAN ANDRES</b>
4 Property Code <b>008812</b>	5 Property Name <b>ATOKA SAN ANDRES UNIT</b>		6 Well Number <b>163</b>
7 OGRID No. <b>017195</b>	8 Operator Name <b>PENNZOIL EXPLORATION &amp; PRODUCTION CO.</b>		9 Elevation <b>3319'</b>

**10 SURFACE LOCATION**

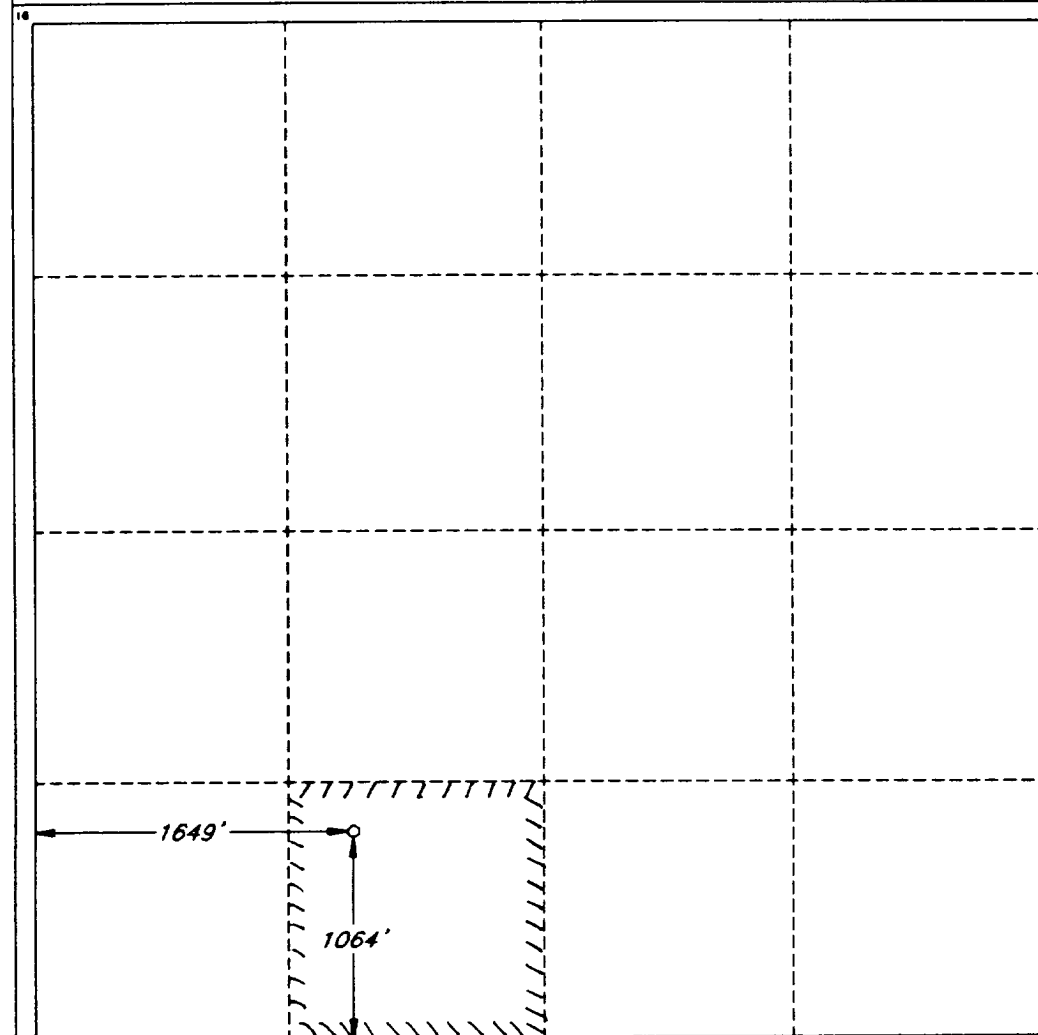
UL or lot no.	Section	Township	Range	Lot Ida	Feet from the	North/South line	Feet from the	East/West line	County
N	11	18 SOUTH	26 EAST, N.M.P.M.		1064'	SOUTH	1649'	WEST	EDDY

**"BOTTOM HOLE LOCATION IF DIFFERENT FROM SURFACE**

UL or lot no.	Section	Township	Range	Lot Ida	Feet from the	North/South line	Feet from the	East/West line	County

12 Dedicated Acres <b>40</b>	13 Joint or Infill	14 Consolidation Code	15 Order No.
---------------------------------	--------------------	-----------------------	--------------

**NO ALLOWABLE WELL BE ASSIGNED TO THIS COMPLETION UNTIL ALL INTERESTS HAVE BEEN CONSOLIDATED OR A NON-STANDARD UNIT HAS BEEN APPROVED BY THE DIVISION**



**OPERATOR CERTIFICATION**

I hereby certify that the information contained herein is true and complete to the best of my knowledge and belief.

Signature *Sharon Hindman*

Printed Name  
**Sharon Hindman**

Title  
**Production Assistant**

Date  
**8/12/97**

**SURVEYOR CERTIFICATION**

I hereby certify that the well location shown on this plat was plotted from field notes of actual surveys made by me or under my supervision, and that the same is true and correct to the best of my belief.

Date of Survey **JUN 30. 1998**

Signature *Roger M. Robbins*  
Professional Surveyor



Certificate No. **ROGER M. ROBBINS P.S. #12128**

JOB #53131 / 75 NE / JSJ