

**DISTRICT I**  
P. O. Box 1980  
Hobbs, NM 88241-1980

State of New Mexico  
Energy, Minerals, and Natural Resources Department

Form C-102  
Revised 02-10-94  
Instructions on back

**DISTRICT II**  
P. O. Drawer DD  
Artesia, NM 88211-0719

**DISTRICT III**  
1000 Rio Brazos Rd.  
Aztec, NM 87410

**DISTRICT IV**  
P. O. Box 2088  
Santa Fe, NM 87507-2088

**OIL CONSERVATION DIVISION**  
P. O. Box 2088  
Santa Fe, New Mexico 87504-2088

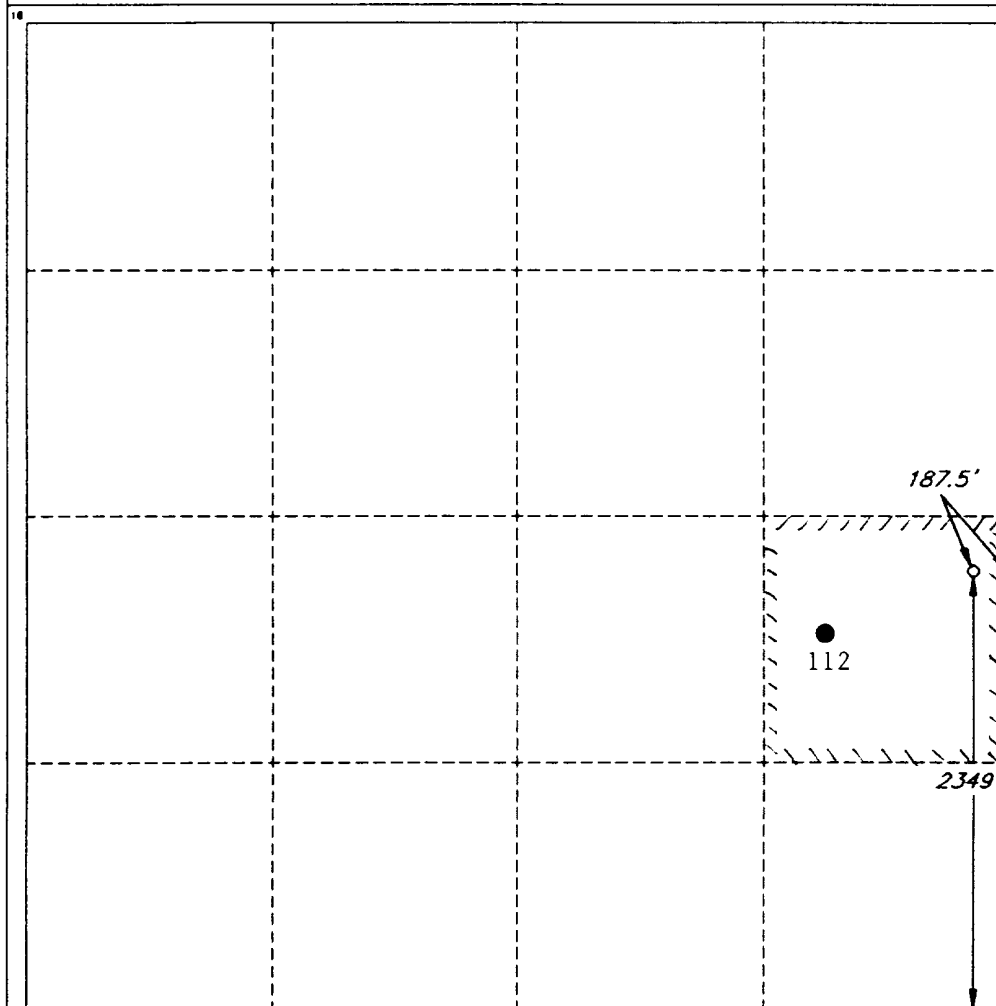
Submit to the Appropriate  
District Office  
State Lease - 4 copies  
Fee Lease - 3 copies

☐ AMENDED REPORT

**WELL LOCATION AND ACREAGE DEDICATION PLAT**

1 API Number <b>30-115-29791</b>		2 Pool Code 03610		3 Pool Name ATOKA SAN ANDRES					
4 Property Code 008812		5 Property Name ATOKA SAN ANDRES UNIT						6 Well Number 164	
7 OGRID No. 017195		8 Operator Name PENNZOIL EXPLORATION & PRODUCTION CO.						9 Elevation 3303'	
10 SURFACE LOCATION									
UL or lot no. I	Section 11	Township 18 SOUTH	Range 28 EAST, N.M.P.M.	Lot Ida	Feet from the 2349'	North/South line SOUTH	Feet from the 187.5'	East/West line EAST	County EDDY
11 BOTTOM HOLE LOCATION IF DIFFERENT FROM SURFACE									
UL or lot no.	Section	Township	Range	Lot Ida	Feet from the	North/South line	Feet from the	East/West line	County
12 Dedicated Acres 40		13 Joint or Infill		14 Consolidation Code		15 Order No.			

NO ALLOWABLE WELL BE ASSIGNED TO THIS COMPLETION UNTIL ALL INTERESTS HAVE BEEN CONSOLIDATED OR A NON-STANDARD UNIT HAS BEEN APPROVED BY THE DIVISION



**OPERATOR CERTIFICATION**

I hereby certify that the information contained herein is true and complete to the best of my knowledge and belief.

Signature  
*Sharon Hindman*  
Printed Name  
Sharon Hindman

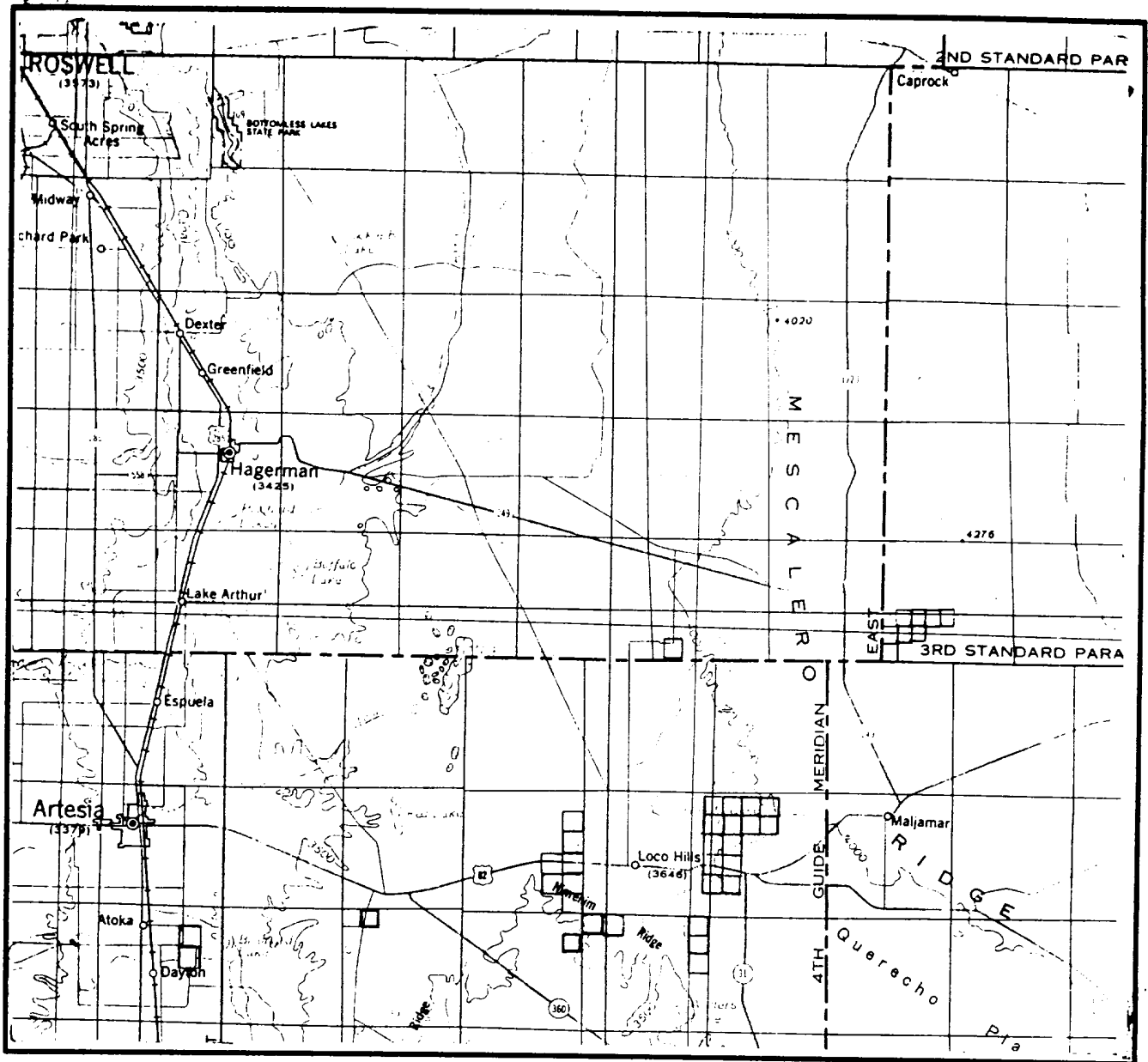
Title  
Production Assistant  
Date  
8/12/97

**SURVEYOR CERTIFICATION**

I hereby certify that the well location shown on this plat was plotted from field notes of actual surveys made by me or under my supervision, and that the same is true and correct to the best of my belief.

Date of Survey  
AUGUST 8, 1997  
Signature and Seal of Professional Surveyor  
Professional Surveyor  
12128  
Certification No.  
ROGER M. ROBBINS P.S. #12128  
JOB #53132 / 75 NE / JSJ

# VICINITY MAP



SECTION 11 TWP 18-S RGE 26-E  
 SURVEY NEW MEXICO PRINCIPAL MERIDIAN  
 COUNTY EDDY STATE NM  
 DESCRIPTION 2349' FSL & 187.5' FEL

OPERATOR PENNZOIL EXPL. & PROD. CO.  
 LEASE ATOKA SAN ANDRES UNIT #164

DISTANCE & DIRECTION FROM THE JCT. U.S. 82 & S.H.  
229, GO SOUTH 6.0 MILES ON S.H. 229, THENCE EAST  
0.8 MILE ON COUNTY ROAD, THENCE EAST 0.3 MILE ON  
LEASE ROAD, THENCE NORTH 0.5 MILE ON LEASE ROAD  
TO A POINT ±187' EAST OF THE LOCATION.



This location has been very carefully staked on the ground according to the best official survey records, maps, and other data available to us.  
 Review this plat and notify us immediately of any possible discrepancy.

## TOPOGRAPHIC LAND SURVEYORS

*Surveying & Mapping for the Oil & Gas Industry*

1307 N. HOBART  
 PAMPA, TX. 79065  
 (800) 658-6382

6709 N. CLASSEN BLVD.  
 OKLAHOMA CITY, OK. 73116  
 (800) 654-3219

2903 N. BIG SPRING  
 MIDLAND, TX. 79705  
 (800) 767-1653