

District I  
PO Box 1980, Hobbs, NM 88241-1980  
District II  
PO Drawer DD, Artesia, NM 88211-0719  
District III  
1000 Rio Brazos Rd., Aztec, NM 87410  
District IV  
PO Box 2088, Santa Fe, NM 87504-2088

State of New Mexico  
Energy, Minerals & Natural Resources Department

OIL CONSERVATION DIVISION  
PO Box 2088  
Santa Fe, NM 87504-2088

AUG 26 1997

Form C-101  
Revised February 10, 1994  
Instructions on back  
Submit to Appropriate District Office  
State Lease - 6 Copies  
Fee Lease - 5 Copies

☐ AMENDED REPORT

APPLICATION FOR PERMIT TO DRILL, RE-ENTER, DEEPEN, PLUGBACK, OR ADD A ZONE

Operator Name and Address: Enron Oil & Gas Company P. O. Box 2267 Midland, Texas 79702		OGRID Number 7377
Property Code 21514	Property Name STW 11 State Com.	Well No. 1

7 Surface Location

UL or lot no.	Section	Township	Range	Lot Ida	Feet from the	North/South line	Feet from the	East/West line	County
G	11	18S	29E		1980	north	1980	east	Eddy

8 Proposed Bottom Hole Location If Different From Surface

UL or lot no.	Section	Township	Range	Lot Ida	Feet from the	North/South line	Feet from the	East/West line	County

Wildcat Sand Tank, West Siluro-Devonian	Proposed Pool 1 96732	Proposed Pool 2
--	--------------------------	-----------------

Work Type Code N	Well Type Code G	Cable/Rotary R	Lease Type Code S	Ground Level Elevation 3507' GR
Multiple No	Proposed Depth 13600	Formation Siluro-Devonian	Contractor Unknown	Spud Date 9/1/97

21 Proposed Casing and Cement Program

Hole Size	Casing Size	Casing weight/foot	Setting Depth	Sacks of Cement	Estimated TOC
14-3/4	11-3/4	42	650	250 sx	CIRCULATED
11	8-5/8	32	4200	1100 sx	CIRCULATED
7-7/8	5-1/2	17	13600	730 sx	Est TOC 7500'

Describe the proposed program. If this application is to DEEPEN or PLUG BACK give the data on the present productive zone and proposed new productive zone. Describe the blowout prevention program, if any. Use additional sheets if necessary.

The BOP equipment shown in Exhibit #1 will consist of a double ram-type (5000 psi WP) preventer and an annular preventer (5000 psi WP). Units will be hydraulically operated and the ram-type will be equipped with blind rams on top and drill pipe rams on bottom. All will be installed on the 11-3/4" surface casing and used continuously until TD is reached. All BOP's and accessory equipment will be tested to 600 psi before drilling out of surface casing. Before drilling out of intermediate casing, the ram-type BOP and accessory equipment will be tested to 5000 psi and the annular to 70% or rated working pressure (3500 psi).

I hereby certify that the information given above is true and complete to the best of my knowledge and belief.

Signature: *Betty Eldon*  
Printed name: Betty Eldon  
Title: Regulatory Analyst  
Date: 8/22/97  
Phone: 915/686-3714

OIL CONSERVATION DIVISION

Approved by: **ORIGINAL SIGNED BY TIM W. GUM**  
Title: **DISTRICT II SUPERVISOR**

Approval Date: **AUG 28 1997** Expiration Date: **8-28-98**

Conditions of Approval:  
Attached ☐

District I  
PO Box 1980, Hobbs, NM 88241-1980  
District II  
PO Drawer DD, Artesia, NM 88211-0719  
District III  
1000 Rio Brazos Rd., Aztec, NM 87410  
District IV  
PO Box 2088, Santa Fe, NM 87504-2088

State of New Mexico  
Energy, Minerals & Natural Resources Department

OIL CONSERVATION DIVISION  
PO Box 2088  
Santa Fe, NM 87504-2088

Form C-102  
Revised February 21, 1994  
Instructions on back  
Submit to Appropriate District Office  
State Lease - 4 Copies  
Fee Lease - 3 Copies

☐ AMENDED REPORT

WELL LOCATION AND ACREAGE DEDICATION PLAT

<sup>1</sup> API Number 30-015-29816	<sup>2</sup> Pool Code 96722	<sup>3</sup> Pool Name Sand Tank, West Siluro-Devonian
<sup>4</sup> Property Code	<sup>5</sup> Property Name STW "11" STATE COM NO. 1	<sup>6</sup> Well Number 1
<sup>7</sup> OGRID No. 7377	<sup>8</sup> Operator Name ENRON OIL AND GAS COMPANY	<sup>9</sup> Elevation 3507

<sup>10</sup>Surface Location

UL or lot no.	Section	Township	Range	Lot Idn	Feet from the	North/South line	Feet from the	East/West line	County
G	11	18-S	29-E		1980	NORTH	1980	EAST	EDDY

<sup>11</sup>Bottom Hole Location If Different From Surface

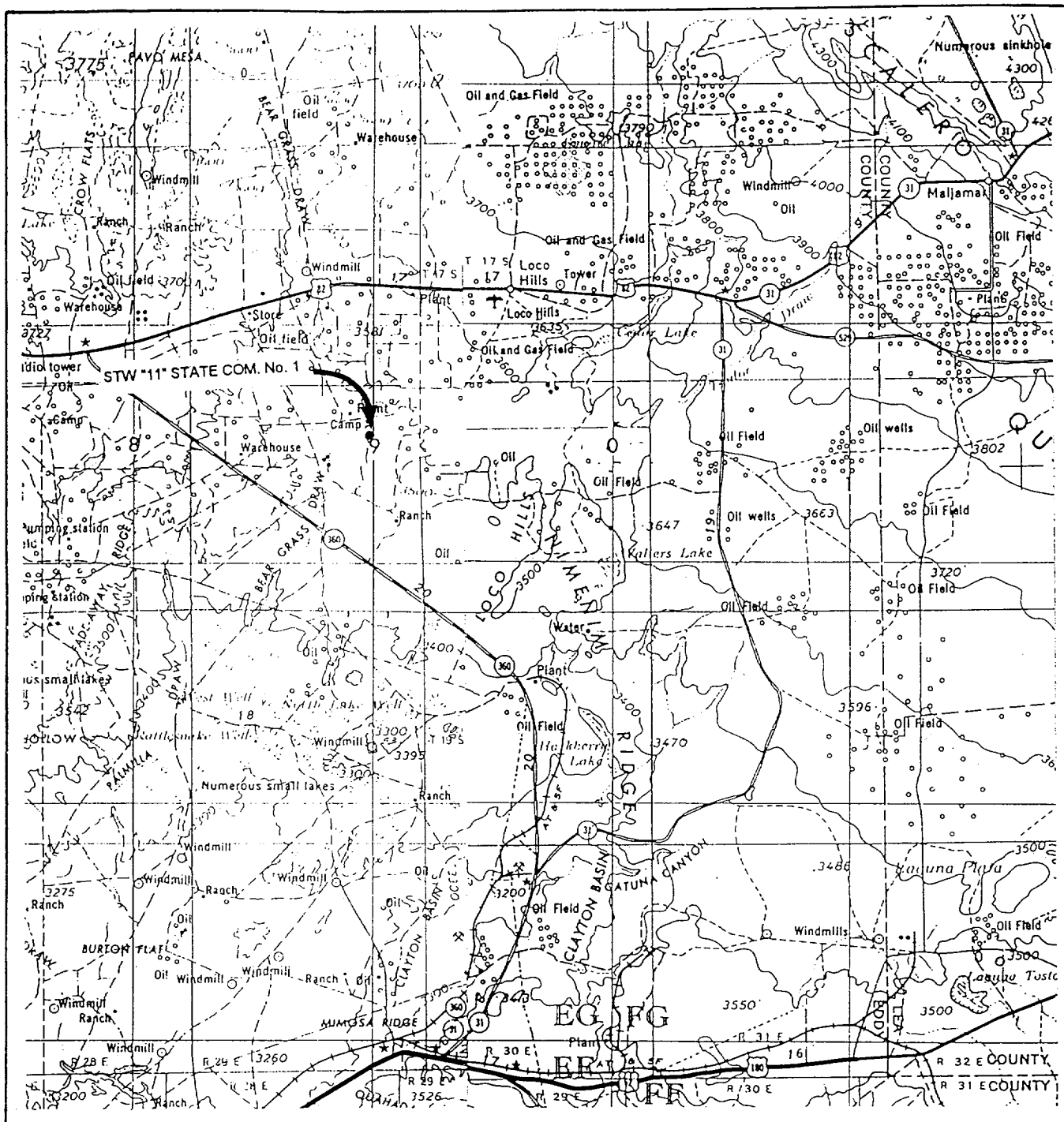
UL or lot no.	Section	Township	Range	Lot Idn	Feet from the	North/South line	Feet from the	East/West line	County

<sup>12</sup> Dedicated Acres 320 E/2	<sup>13</sup> Joint or Infill	<sup>14</sup> Consolidation Code	<sup>15</sup> Order No.
--	-------------------------------	----------------------------------	-------------------------

NO ALLOWABLE WILL BE ASSIGNED TO THIS COMPLETION UNTIL ALL INTERESTS HAVE BEEN CONSOLIDATED  
OR A NON-STANDARD UNIT HAS BEEN APPROVED BY THE DIVISION

<sup>16</sup>										<sup>17</sup> OPERATOR CERTIFICATION <i>I hereby certify that the information contained herein is true and complete to the best of my knowledge and belief.</i>  Signature Betty Gildon Printed Name Regulatory Analyst Title 8/22/97 Date
										<sup>18</sup> SURVEYOR CERTIFICATION <i>I hereby certify that the well location shown on this plat was plotted from field notes of actual surveys made by me or under my supervision, and that the same is true and correct to best of my belief.</i>  JULY 30, 1996 Date of Survey Signature and Seal of Professional Surveyor:  Certificate Number 8278

# VICINITY MAP



SCALE: 1" = 4 MILES

WTC 44966

SEC. 11 TWP. 18-S RGE. 29-E

SURVEY N.M.P.M

COUNTY EDDY STATE NM

DESCRIPTION 1980' FNL & 1980' FEL

ELEVATION 3507'

OPERATOR ENRON OIL & GAS

LEASE STW '11' STATE COM. NO. 1

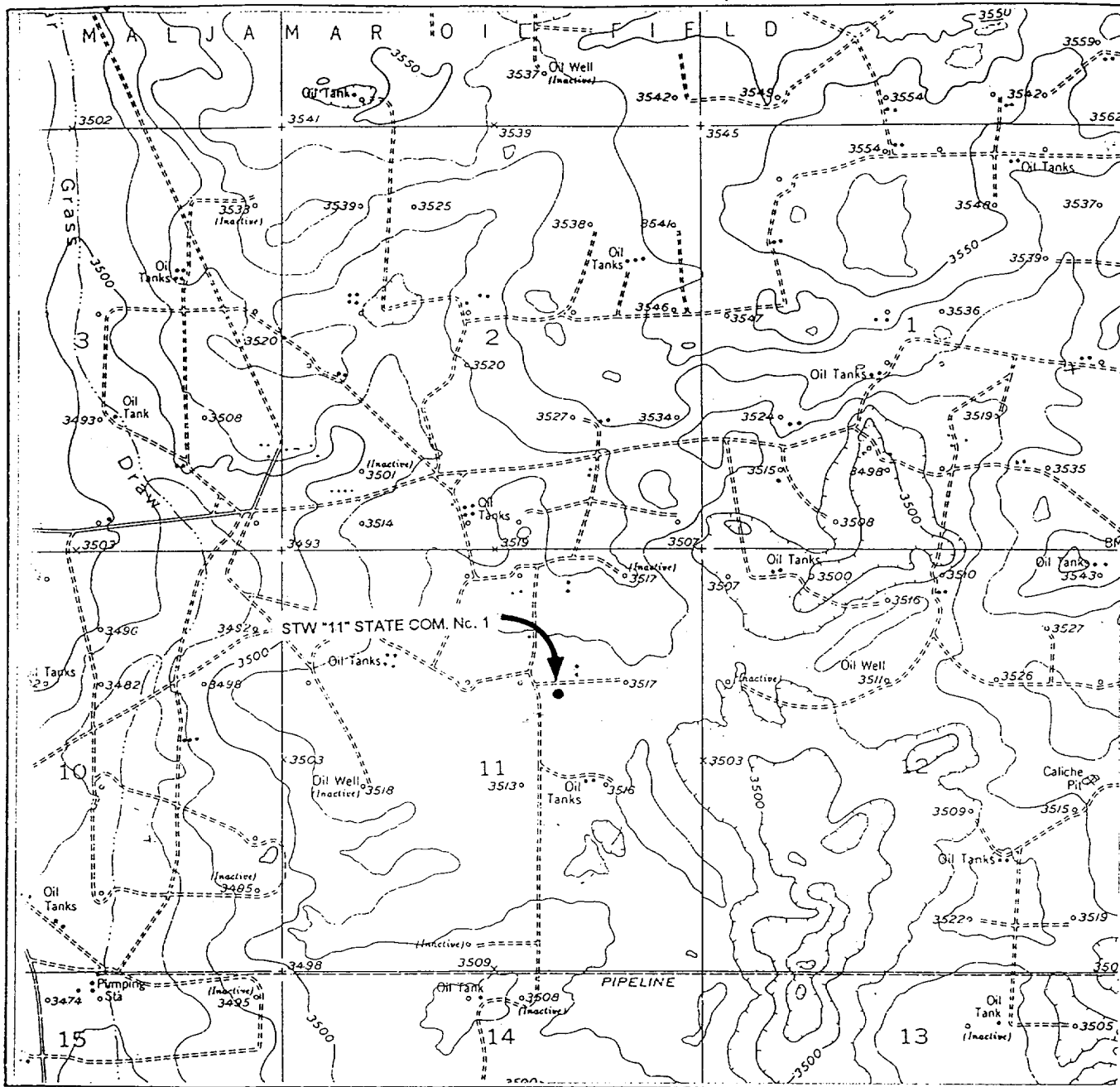
**WEST TEXAS CONSULTANTS, INC.**

ENGINEERS-PLANNERS-SURVEYORS

MIDLAND, TEXAS

915-685-3800

# LOCATION VERIFICATION MAP



SCALE: 1" = 2000'

WTC 44966

CONTOUR INTERVAL 10'

SEC. 11 TWP. 18-S RGE. 29-E

SURVEY N.M.P.M

COUNTY EDDY STATE NM

DESCRIPTION 1980' FNL & 1980' FEL

ELEVATION 3507'

OPERATOR ENRON OIL & GAS

LEASE STW \*11\* STATE COM. NO. 1

USGS TOPO MAP RED LAKE, SE

**WEST TEXAS CONSULTANTS, INC.**

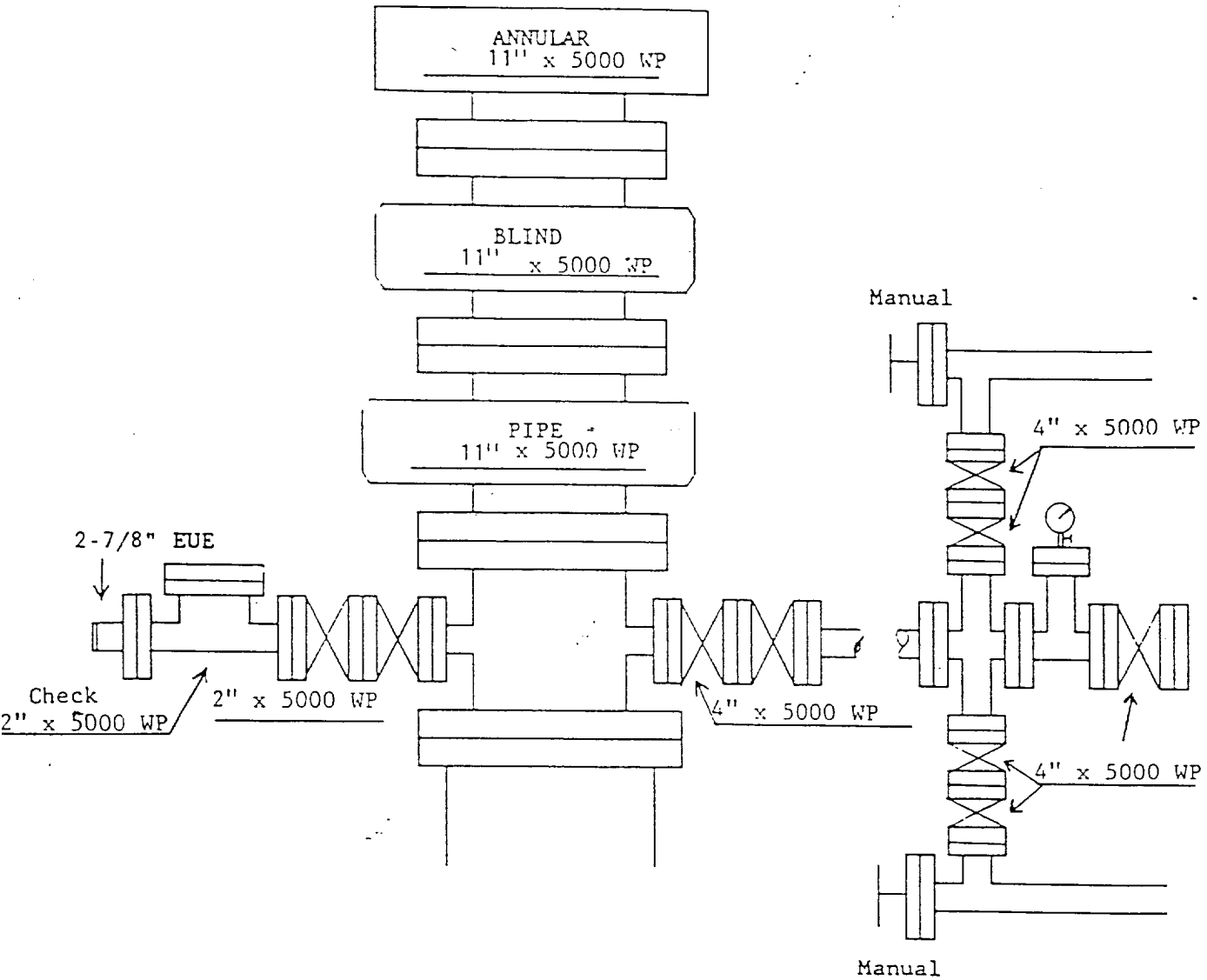
ENGINEERS-PLANNERS-SURVEYORS

MIDLAND, TEXAS

915-685-3800

ENRON OIL & GAS COMPANY  
STW 11 State Com. #1

ATTACHMENT I



ATTACHMENT TO EXHIBIT #1  
ENRON OIL & GAS COMPANY  
STW 11 FEDERAL NO. 1

1. Drilling nipple to be so constructed that it can be removed without use of a welder through rotary table opening, with minimum I.D. equal to preventer bore.
2. Wear ring to be properly installed in head.
3. Blow out preventer and all fittings must be in good condition, 5000 psi W.P. minimum.
4. All fittings to be flanged.
5. Safety valve must be available on rig floor at all times with proper connections, valve to be full bore 5000 psi W.P. minimum.
6. All choke and fill lines to be securely anchored, especially ends of choke lines.
7. Equipment through which bit must pass shall be at least as large as the diameter of the casing being drilled through.
8. Kelly cock on kelly.
9. Extension wrenches and hand wheels to be properly installed.
10. Blow out preventer control to be located as close to driller's position as feasible.
11. Blow out preventer closing equipment to include minimum 40 gallon accumulator, two independent sources of pump power on each closing unit installation, and meet all API specifications.