

UNITED STATES
DEPARTMENT OF THE INTERIOR
BUREAU OF LAND MANAGEMENT

SUBMIT IN TRIPLICATE*

Form approved.

(See other instr. on
reverse side)

N. M. Oil Cons. Division

DESIGNATION AND SERIAL NO.

APPLICATION FOR PERMIT TO DRILL OR DEEPEN

NM IC 026874-B

IF INDIAN, ALLOTTEE OR TRIBE NAME
NA

1a TYPE OF WORK: DRILL ☒ DEEPEN ☐

7. UNIT AGREEMENT NAME

1b TYPE OF WELL:

OIL WELL ☒ GAS WELL ☐ Other ☐ SINGLE ZONE ☐ MULTIPLE ZONE ☐

8. FARM OR LEASE NAME, WELL NO.

2 NAME OF OPERATOR

DEVON ENERGY CORPORATION (NEVADA)

Malco "B" Federal #6

3. ADDRESS AND TELEPHONE NO.

20 N. BROADWAY, SUITE 1500, OKC, OK 73102 (405) 552-4515

9. API WELL NO.

30-015-29924

4. LOCATION OF WELL (Report location clearly and in accordance with any State requirements)

At surface 2030' FNL & 1750' FEL

10. FIELD AND POOL, OR WILDCAT

Red Lake; Q-GB-SA

At top proposed prod. zone (SAME)

11. SEC., T., R., M., OR BLOCK AND SURVEY OR AREA
Section 6 - T18S-R27E

14. DISTANCE IN MILES AND DIRECTION FROM NEAREST TOWN OR POST OFFICE*

Approximately 7 miles southeast of Artesia, NM

12. COUNTY OR PARISH
Cady County

13. STATE
New Mexico

15. DISTANCE FROM PROPOSED
LOCATION TO NEAREST

PROPERTY OR LEASE LINE, FT. 430'

16. NO. OF ACRES IN LEASE

120

17. NO. OF ACRES ASSIGNED
TO THIS WELL

40

18. DISTANCE FROM PROPOSED LOCATION*

(Also to nearest drg. unit line if any)
TO NEAREST WELL, DRILLING, COMPLETED,
OR APPLIED FOR, ON THIS LEASE, FT. 570'

19. PROPOSED DEPTH

2150'

20. ROTARY OR CABLE TOOLS*

Rotary

21. ELEVATIONS (Show whether DF, RT, GR, etc.)

GR 3453

22. APPROX. DATE WORK WILL START*

November 15, 1997

Controlled Water Basin

23. PROPOSED CASING AND CEMENTING PROGRAM

SIZE OF HOLE	GRADE, SIZE OF CASING	WEIGHT PER FOOT	SETTING DEPTH	QUANTITY OF CEMENT
17 1/2"	14"	Conductor	40'	Redimix
12 1/4"	8 5/8", J-55	24 ppf	1050'	350 sx Lite + 200 sx Class C
7 7/8"	5 1/2", J-55	15.5 ppf	2800'	150 sx Lite + 350 sx Class C

* Cement will be circulated to surface on all casing strings.

Devon Energy plans to drill to 2800' +/- to test the San Andres Formation for commercial quantities of oil. If the San Andres is deemed non-commercial, the wellbore will be plugged and abandoned per Federal regulations. Programs to adhere to onshore oil and gas regulations are outlined in the following exhibits and attachments.

Drilling Program

Surface Use and Operating Plan

Exhibit #1 - Blowout Prevention Equipment

Exhibit #1-A - Choke Manifold

Exhibit #2 - Location and Elevation Plat

Exhibit #3 - Planned Access Roads

Exhibit #4 - Wells Within a One Mile Radius

Exhibit #5 - Production Facilities Plan

Exhibit #6 - Rotary Rig Layout

Exhibit #7 - Casing Design Parameters and Factors

Exhibit #8 - H₂S Operating Plan

The undersigned accepts all applicable terms, conditions, stipulation, and restrictions concerning operations conducted on the leased land or portion thereof, as described above.

Bond Coverage: Nationwide
BLM Bond File No.: CO-1104

Post ID-1
11-14-97
API & Loc

IN ABOVE SPACE DESCRIBE PROPOSED PROGRAM: If proposal is to deepen, give data on present productive zone and proposed new productive zone. If proposal is to drill or deepen directionally, give pertinent data on subsurface locations and measured and true vertical depths. Give blowout preventer program, if any.

24.

SIGNED E. L. Buttross Jr.

E. L. BUTTROSS, JR.
TITLE DISTRICT ENGINEER

DATE October 1, 1997

*(This space for Federal or State office use)

PERMIT NO. _____

APPROVAL DATE _____

Application approval does not warrant or certify that the applicant holds legal or equitable title to those rights in the subject lease which would entitle the applicant to conduct operations thereon.
CONDITIONS OF APPROVAL, IF ANY:

APPROVED BY (ORIG. SGD.) ARMANDO A. LOPEZ

TITLE Acting Asst. Dir., MINERALS

DATE 11-6-97

See Instructions On Reverse Side

Title 18 U.S.C. Section 1001, makes it a crime for any person knowingly and willfully to make to any department or agency of the United States any false, fictitious or fraudulent statements or representations as to any matter within its jurisdiction

BUREAU OF LAND MGMT.
ROSWELL OFFICE

1997 OCT -8 A 8:37

RECEIVED

DISTRICT I

P.O. Box 1980, Hobbs, NM 88240

DISTRICT II

P.O. Drawer DD, Artesia, NM 88210

DISTRICT III

1000 Rio Brazos Rd., Aztec, NM 87410

State of New Mexico

Energy, Minerals and Natural Resources Department

Form C-102

Revised February 10, 1994

Instruction on back

Submit to Appropriate District Office

State Lease - 4 Copies

Fee Lease - 3 Copies

OIL CONSERVATION DIVISION

P.O. Box 2088

Santa Fe, New Mexico 87504-2088

☐ AMENDED REPORT

WELL LOCATION AND ACREAGE DEDICATION PLAT

API Number 30-015-29924	Pool Code 51300	Pool Name Red Lake (Q-GB-SA)
Property Code	Property Name Malco "B" Federal	Well Number 6
OGRID No.	Operator Name Devon Energy Corporation	Elevation 3457'

Surface Location

UL or lot No.	Section	Township	Range	Lot Idn	Feet from the	North/South line	Feet from the	East/West line	County
G	6	18 S	27 E		2030	North	1750	East	Eddy

Bottom Hole Location If Different From Surface

UL or lot No.	Section	Township	Range	Lot Idn	Feet from the	North/South line	Feet from the	East/West line	County
Dedicated Acres	Joint or Infill	Consolidation Code	Order No.						

NO ALLOWABLE WILL BE ASSIGNED TO THIS COMPLETION UNTIL ALL INTERESTS HAVE BEEN CONSOLIDATED
OR A NON-STANDARD UNIT HAS BEEN APPROVED BY THE DIVISION

	OPERATOR CERTIFICATION I hereby certify the the information contained herein is true and complete to the best of my knowledge and belief. <u>E. L. Buttross Jr.</u> Signature <u>E.L. Buttross, Jr.</u> Printed Name <u>District Engineer</u> Title <u>October 1, 1997</u> Date
	SURVEYOR CERTIFICATION I hereby certify that the well location shown on this plat was plotted from field notes of actual surveys made by me or under my supervision and that the same is true and correct to the best of my belief. <u>August 27, 1997</u> Date Surveyed <u>[Signature]</u> Signature & Seal of Professional Surveyor <u>W.D. No. 74820</u> Certificate No. <u>Gary L. Jones</u> 7977 BASIN SURVEYS

MINIMUM BLOWOUT PREVENTER REQ

3,000 psi Working Pressure

EXHIBIT 1

3 MWP

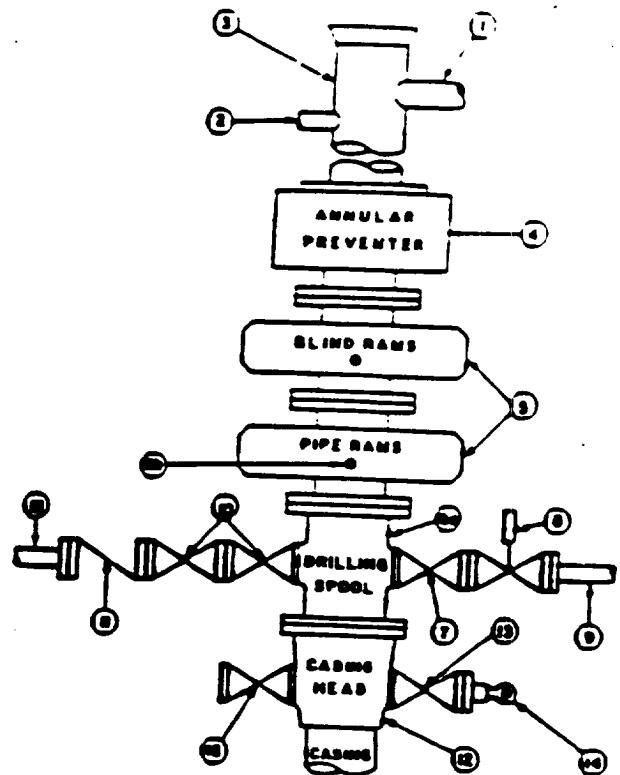
STACK REQUIREMENTS

No	Item	Min I.D.	Min. Nominal
1	Flange		
2	Fill up line		2"
3	Drilling nipple		
4	Annular preventer		
5	Two single or one dual hydraulically operated rams		
6a	Drilling spool with 2" min. kill line and 3" min choke line outlets		
6b	2" min. kill line and 3" min. choke line outlets in ram. (Alternate to 6a above.)		
7	Valve Gate <input type="checkbox"/> Plug <input type="checkbox"/>	3-1/8"	
8	Gate valve—power operated	3-1/8"	
9	Line to choke manifold		3"
10	Valves Gate <input type="checkbox"/> Plug <input type="checkbox"/>	2-1/16"	
11	Check valve	2-1/16"	
12	Casing head		
13	Valve Gate <input type="checkbox"/> Plug <input type="checkbox"/>	1-13/16"	
14	Pressure gauge with needle valve		
15	Kill line to rig mud pump manifold		2"

OPTIONAL

16	Flanged valve	1-13/16"	
----	---------------	----------	--

CONFIGURATION 4



CONTRACTOR'S OPTION TO FURNISH:

1. All equipment and connections above bradenhead or casinghead. Working pressure of preventers to be 3,000 psi, minimum.
2. Automatic accumulator (50 gallon, minimum) capable of closing BOP in 30 seconds or less and, holding them closed against full rated working pressure.
3. BOP controls, to be located near driller's position.
4. Kelly equipped with Kelly cock.
5. Inside blowout preventer or its equivalent on derrick floor at all times with proper threads to fit pipe being used.
6. Kelly sever-sub equipped with rubber casing protector at all times.
7. Plug type blowout preventer tester.
8. Extra set pipe rams to fit drill pipe in use on location at all times.
9. Type RX ring gaskets in place of Type R.

MEC TO FURNISH:

1. Bradenhead or casinghead and side valves.
2. Wear bushing, if required.

GENERAL NOTES:

1. Deviations from this drawing may be made only with the express permission of MEC's Drilling Manager.
2. All connections, valves, fittings, piping, etc., subject to well or pump pressure must be flanged (suitable clamp connections acceptable) and have minimum working pressure equal to rated working pressure of preventers up through choke. Valves must be full opening and suitable for high pressure mud service.
3. Controls to be of standard design and each marked, showing opening and closing position.
4. Chokes will be positioned so as not to hamper or delay changing of choke bars. Replaceable parts for adjustable chokes, either bean sizes, retainers, and choke wrenches to be conveniently located for immediate use.
5. All valves to be equipped with handwheels or handles ready for immediate use.
6. Choke lines must be suitably anchored.

7. Handwheels and extensions to be connected and ready for use.
8. Valves adjacent to drilling spool to be kept open. Use outside valves except for emergency.
9. All seamless steel control piping (3000 psi working pressure) to have flexible joints to avoid stress. Hoses will be permitted.
10. Casinghead connections shall not be used except in case of emergency.
11. Do not use kill line for routine fill-up operations.

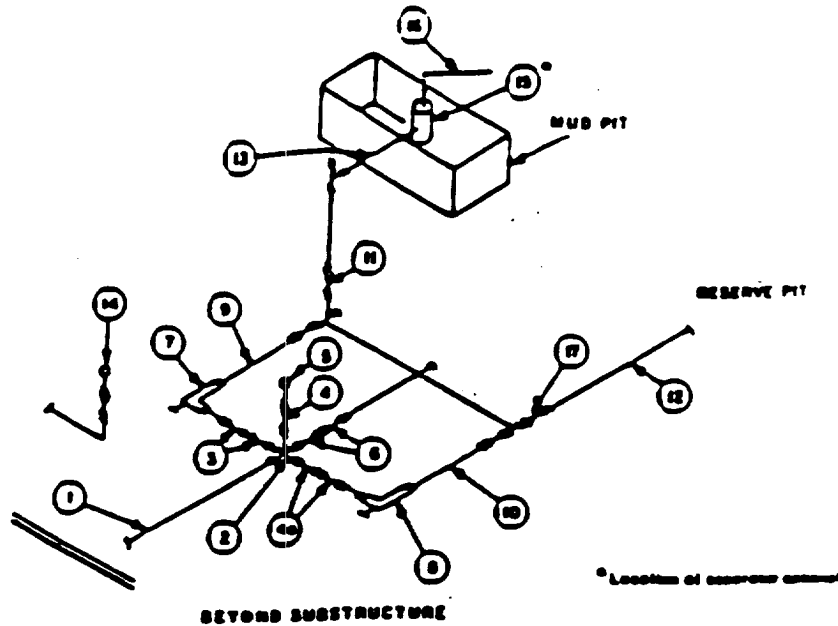
Attachment to Exhibit #1
NOTES REGARDING BLOWOUT PREVENTORS
Malco "B" Federal #6
Eddy County, New Mexico

1. Drilling nipple will be constructed so it can be removed mechanically without the aid of a welder. The minimum internal diameter will equal BOP bore.
2. Wear ring will be properly installed in head.
3. Blowout preventor and all associated fittings will be in operable condition to withstand a minimum 3000 psi working pressure.
4. All fittings will be flanged.
5. A full bore safety valve tested to a minimum 3000 psi WP with proper thread connections will be available on the rotary rig floor at all times.
6. All choke lines will be anchored to prevent movement.
7. All BOP equipment will be equal to or larger in bore than the internal diameter of the last casing string.
8. Will maintain a Kelly cock attached to the Kelly.
9. Hand wheels and wrenches will be properly installed and tested for safe operation.
10. Hydraulic floor control for blowout preventor will be located as near in proximity to driller's controls as possible.
11. All BOP equipment will meet API standards and include a minimum 40 gallon accumulator having two independent means of power to initiate closing operation.

**MINIMUM CHOKE MANIFOLD
3,000, 5,000 and 10,000 PSI Working Press**

3 MWP - 5 MWP - 10 MWP

EXHIBIT 1A



MINIMUM REQUIREMENTS										
No		3,000 MWP			5,000 MWP			10,000 MWP		
		I.D.	NOMINAL	RATING	I.D.	NOMINAL	RATING	I.D.	NOMINAL	RATING
1	Line from drilling spool		3"	3,000		3"	5,000		3"	10,000
2	Cross 3"x3"x3"x3"			3,000			5,000			
	Cross 3"x3"x3"x3"									10,000
3	Valves (1) Gate □ Plug □(2)	3-1/8"		3,000	3-1/8"		5,000	3-1/8"		10,000
4	Valve Gate □ Plug □(2)	1-13/16"		3,000	1-13/16"		5,000	1-13/16"		10,000
4a	Valves (1)	2-1/16"		3,000	2-1/16"		5,000	3-1/8"		10,000
5	Pressure Gauge			3,000			5,000			10,000
6	Valves Gate □ Plug □(2)	3-1/8"		3,000	3-1/8"		5,000	3-1/8"		10,000
7	Adjustable Choke(2)	2"		3,000	2"		5,000	2"		10,000
8	Adjustable Choke	1"		3,000	1"		5,000	2"		10,000
9	Line		3"	3,000		3"	5,000		3"	10,000
10	Line		2"	3,000		2"	5,000		3"	10,000
11	Valves Gate □ Plug □(2)	3-1/8"		3,000	3-1/8"		5,000	3-1/8"		10,000
12	Lines		3"	1,000		3"	1,000		3"	2,000
13	Lines		3"	1,000		3"	1,000		3"	2,000
14	Remote reading compound standpipe pressure gauge			3,000			5,000			10,000
15	Gas Separator		2'x5'			2'x5'			2'x5'	
16	Line		4"	1,000		4"	1,000		4"	2,000
17	Valves Gate □ Plug □(2)	3-1/8"		3,000	3-1/8"		5,000	3-1/8"		10,000

(1) Only one required in Class 3M.

(2) Gate valves only shall be used for Class 10M.

(3) Remote operated hydraulic chokes required on 5,000 psi and 10,000 psi for drilling.

EQUIPMENT SPECIFICATIONS AND INSTALLATION INSTRUCTIONS

- All connections in choke manifold shall be welded, cladded, flanged or Cameron clamp of comparable rating.
- All flanges shall be API 6B or 6BX and ring gaskets shall be API RX or BX. Use only BX for 10 MWP.
- All lines shall be securely anchored.
- Chokes shall be equipped with tungsten carbide seats and needles, and replacements shall be available.
- Choke manifold pressure and standpipe pressure gauges shall be available at the choke manifold to assist in regulating chokes. As an alternate with automatic chokes, a choke manifold pressure gauge shall be located on the rig floor in conjunction with the standpipe pressure gauge.
- Line from drilling spool to choke manifold should be as straight as possible. Lines downstream from chokes shall make turns by large bends or 90° bends using butt plugged tees.
- Discharge lines from chokes, choke bypass and from top of gas separator should vent as far as practical from the well.