

UNITED STATES  
DEPARTMENT OF THE INTERIOR  
BUREAU OF LAND MANAGEMENT

SUBMIT IN TRIPLICATE\*

(See other inst.  
reverse side)

Form approved.

## APPLICATION FOR PERMIT TO DRILL OR DEEPEN

1a TYPE OF WORK: DRILL ☒ DEEPEN ☐

b TYPE OF WELL:

OIL WELL ☒ GAS WELL ☐ Other ☐ SINGLE ZONE ☐ MULTIPLE ZONE ☐

2 NAME OF OPERATOR

DEVON ENERGY CORPORATION (NEVADA)

3 ADDRESS AND TELEPHONE NO.

20 N. BROADWAY, SUITE 1500, OKC, OK 73102 (405) 552-4511

4 LOCATION OF WELL (Report location clearly and in accordance with any State requirements)\*

At surface 2090' FSL &amp; 1650' FWL, Unit "K"

At top proposed prod. zone (SAME)

14. DISTANCE IN MILES AND DIRECTION FROM NEAREST TOWN OR POST OFFICE\*

Approximately 7 miles southeast of Artesia, NM

15. DISTANCE FROM PROPOSED  
LOCATION TO NEAREST

PROPERTY OR LEASE LINE, FT. 1650'

(Also to nearest drg. unit line if any)

18. DISTANCE FROM PROPOSED LOCATION\*

TO NEAREST WELL, DRILLING, COMPLETED,  
OR APPLIED FOR, ON THIS LEASE, FT. 750'

16. NO. OF ACRES IN LEASE

158

19. PROPOSED DEPTH

2800'

21. ELEVATIONS (Show whether DF, RT, GR, etc.)

GR 3397'

5. LEASE DESIGNATION AND SERIAL NO.

LC-069274 060894

6. IF INDIAN, ALLOTTEE OR TRIBE NAME  
NA

7. UNIT AGREEMENT NAME

8. FARM OR LEASE NAME, WELL NO.

Patton 6 Federal #5

9. API WELL NO.

30-015-29981

10. FIELD AND POOL, OR WILDCAT

Red Lake; Q-GB-SA

11. SEC., T., R., M., OR BLOCK AND SURVEY OR AREA  
Section 6-T18S-27E

12. COUNTY OR PARISH

Eddy County

13. STATE

New  
Mexico

17. NO. OF ACRES ASSIGNED

TO THIS WELL

40

20. ROTARY OR CABLE TOOLS\*

Rotary

22. APPROX. DATE WORK WILL START\*

January 1, 1998

## 23. PROPOSED CASING AND CEMENTING PROGRAM

SIZE OF HOLE	GRADE, SIZE OF CASING	WEIGHT PER FOOT	SETTING DEPTH	QUANTITY OF CEMENT
17 1/2"	14"	Conductor	40'	Redimix
12 1/4"	8 5/8", J-55	24 ppf	1050' 1150'	Redimix
7 7/8"	5 1/2", J-55	15.5 ppf	2800'	Redimix

\* Cement will be circulated to surface on all casing strings.

Devon Energy plans to drill to 2800' +/- to test the San Andres Formation for commercial quantities of oil. If the San Andres is deemed non-commercial, the wellbore will be plugged and abandoned per Federal regulations. Programs to adhere to onshore oil and gas regulations are outlined in the following exhibits and attachments.

## Drilling Program

## Surface Use and Operating Plan

Exhibit #1 - Blowout Prevention Equipment/  
Choke Manifold

Exhibit #2 - Location and Elevation Plat

Exhibit #3 - Planned Access Roads

Exhibit #4 - Wells Within a One Mile Radius

Exhibit #5 - Production Facilities Plan

Exhibit #6 - Rotary Rig Layout

Exhibit #7 - Casing Design Parameters and Factors

Exhibit #8 - H<sub>2</sub>S Operating Plan

The undersigned accepts all applicable terms, conditions, stipulation, and restrictions concerning operations conducted on the leased land or portion thereof, as described above.

Bond Coverage: Nationwide  
BLM Bond File No.: CO-1104APPROVAL SUBJECT TO  
GENERAL REQUIREMENTS AND  
SPECIAL STIPULATIONS  
ATTACHEDPosted ID-1  
ML & API  
12-29-97

IN ABOVE SPACE DESCRIBE PROPOSED PROGRAM: If proposal is to deepen, give data on present productive zone and proposed new productive zone. If proposal is to drill or deepen directionally, give pertinent data on subsurface locations and measured and true vertical depths. Give blowout preventer program, if any.

24.

SIGNED

E. L. Buttross Jr.

TITLE E. L. BUTTROSS, JR.  
DISTRICT ENGINEER

DATE November 12, 1997

\*(This space for Federal or State office use)

PERMIT NO.

APPROVAL DATE

Application approval does not warrant or certify that the applicant holds legal or equitable title to those rights in the subject lease which would entitle the applicant to conduct operations thereon.  
CONDITIONS OF APPROVAL, IF ANY:

APPROVED BY

(ORIG. SGB, P. 1, 2, 3, 4, 5, 6, 7, 8, 9, 10, 11, 12, 13, 14, 15, 16, 17, 18, 19, 20, 21, 22, 23, 24, 25, 26, 27, 28, 29, 30, 31, 32, 33, 34, 35, 36, 37, 38, 39, 40, 41, 42, 43, 44, 45, 46, 47, 48, 49, 50, 51, 52, 53, 54, 55, 56, 57, 58, 59, 60, 61, 62, 63, 64, 65, 66, 67, 68, 69, 70, 71, 72, 73, 74, 75, 76, 77, 78, 79, 80, 81, 82, 83, 84, 85, 86, 87, 88, 89, 90, 91, 92, 93, 94, 95, 96, 97, 98, 99, 100)

TITLE

ADM. MINERALS

DATE

12/18/97

See Instructions On Reverse Side

Title 18 U.S.C. Section 1001, makes it a crime for any person knowingly and willfully to make to any department or agency of the United States any false, fictitious or fraudulent statements or representations as to any matter within its jurisdiction

RECEIVED  
1997 NOV 19 A 8:53  
JAMES H. LINDHOLM  
ROOSEVELT OFFICE

DISTRICT I  
P.O. Box 1980, Hobbs, NM 88240

State of New Mexico  
Energy, Minerals and Natural Resources Department

Form C-102  
Revised February 10, 1994  
Instruction on back  
Submit to Appropriate District Office  
State Lease - 4 Copies  
Fee Lease - 3 Copies

DISTRICT II  
P.O. Drawer DD, Artesia, NM 88210

## OIL CONSERVATION DIVISION

DISTRICT III  
1000 Rio Brazos Rd., Aztec, NM 87410

P.O. Box 2088  
Santa Fe, New Mexico 87504-2088

☐ AMENDED REPORT

## WELL LOCATION AND ACREAGE DEDICATION PLAT

API Number <b>30-015-29981</b>	Pool Code <b>51300</b>	Pool Name Red Lake (Q-GB-SA)
Property Code	Property Name Patton 6 Federal	Well Number 5
OGRID No.	Operator Name Devon Energy Corporation	Elevation 3397'

## Surface Location

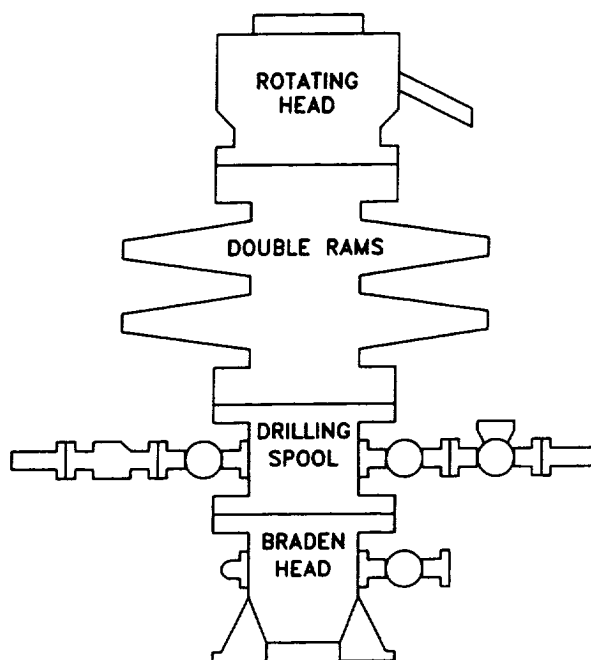
UL or lot No.	Section	Township	Range	Lot Idn	Feet from the	North/South line	Feet from the	East/West line	County
K	6	18 S	27 E		2090	South	1650	West	Eddy

## Bottom Hole Location If Different From Surface

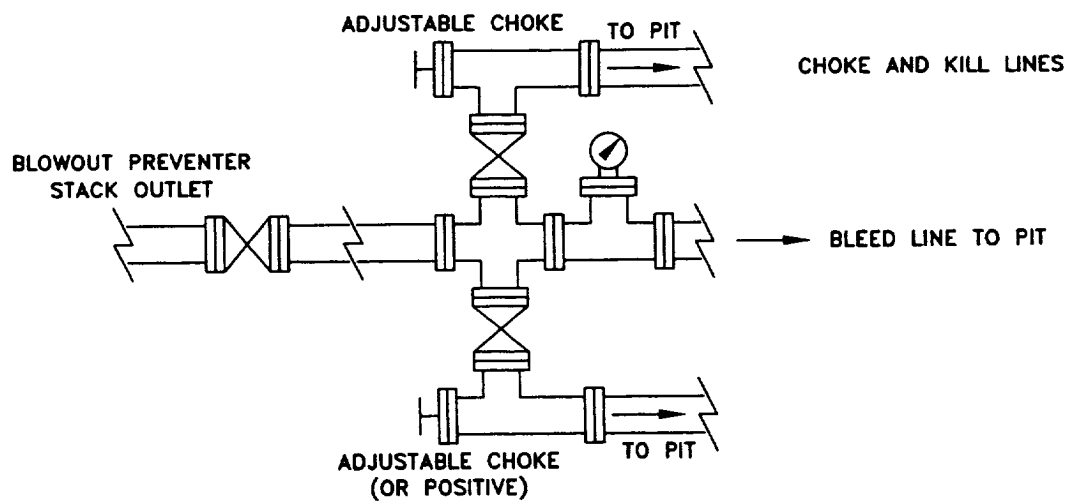
UL or lot No.	Section	Township	Range	Lot Idn	Feet from the	North/South line	Feet from the	East/West line	County
Dedicated Acres	Joint or Infill	Consolidation Code	Order No.						

NO ALLOWABLE WILL BE ASSIGNED TO THIS COMPLETION UNTIL ALL INTERESTS HAVE BEEN CONSOLIDATED  
OR A NON-STANDARD UNIT HAS BEEN APPROVED BY THE DIVISION

	<b>OPERATOR CERTIFICATION</b>  I hereby certify the the information contained herein is true and complete to the best of my knowledge and belief.  <u>E. L. Buttross Jr.</u> Signature E.L. Buttross, Jr. Printed Name District Engineer Title November 14, 1997 Date
	<b>SURVEYOR CERTIFICATION</b>  I hereby certify that the well location shown on this plat was plotted from field notes of actual surveys made by me or under my supervision, and that the same is true and correct to the best of my belief.  October 30, 1997 Date Surveyed <u>[Signature]</u> Signature & Seal of Professional Surveyor W.O. No. 7576c Certificate No. Gary L. Jones 7977 BASIN SURVEYS



## CHOKE MANIFOLD REQUIREMENT (2000 psi WP)



**devon**  
ENERGY SERVICES

**WEST RED LAKE**

EDDY COUNTY, NEW MEXICO

SCHEMATIC

**BLOWOUT PREVENTOR**

(2000 PSI MINIMUM WP)

WRLBOP

EB

11/97

**Attachment to Exhibit #1**  
**NOTES REGARDING BLOWOUT PREVENTORS**  
Patton 6 Federal #5  
Eddy County, New Mexico

1. Drilling nipple will be constructed so it can be removed mechanically without the aid of a welder. The minimum internal diameter will equal BOP bore.
2. Wear ring will be properly installed in head.
3. Blowout preventor and all associated fittings will be in operable condition to withstand a minimum 2000 psi working pressure.
4. All fittings will be flanged.
5. A full bore safety valve tested to a minimum 2000 psi WP with proper thread connections will be available on the rotary rig floor at all times.
6. All choke lines will be anchored to prevent movement.
7. All BOP equipment will be equal to or larger in bore than the internal diameter of the last casing string.
8. Will maintain a Kelly cock attached to the Kelly.
9. Hand wheels and wrenches will be properly installed and tested for safe operation.
10. All BOP equipment will meet API standards and include a minimum 40 gallon accumulator having two independent means of power to initiate closing operation.