

UNITED STATES
DEPARTMENT OF THE INTERIOR
BUREAU OF LAND MANAGEMENT

SUBMIT IN TRIPLICATE

(See other instrs.
reverse side)

Form approved.

APPLICATION FOR PERMIT TO DRILL OR DEEPEN

1a. TYPE OF WORK: DRILL ☒ DEEPEN ☐

b. TYPE OF WELL:

OIL WELL ☒ GAS WELL ☐ Other ☐ SINGLE ZONE ☐ MULTIPLE ZONE ☐

2. NAME OF OPERATOR

DEVON ENERGY CORPORATION (NEVADA)

3. ADDRESS AND TELEPHONE NO.

20 N. BROADWAY, SUITE 1500, OKC, OK 73102 (405) 552-4511

4. LOCATION OF WELL (Report location clearly and in accordance with any State requirements)*

At surface 2485' FSL & 990' FEL, Unit "I"

UNORTHODOX LOCATION

At top proposed prod. zone (SAME)

14. DISTANCE IN MILES AND DIRECTION FROM NEAREST TOWN OR POST OFFICE*

Approximately 7 miles southeast of Artesia, NM

15. DISTANCE FROM PROPOSED
LOCATION TO NEAREST

PROPERTY OR LEASE LINE, FT. 990'

(Also to nearest dble. unit line if any)

18. DISTANCE FROM PROPOSED LOCATION*

TO NEAREST WELL, DRILLING, COMPLETED,
OR APPLIED FOR, ON THIS LEASE, FT. 750'

21. ELEVATIONS (Show whether DF, RT, GR, etc.)

GR 3485'

16. NO. OF ACRES IN LEASE

40

19. PROPOSED DEPTH

2800'

5. LEASE DESIGNATION AND SERIAL NO.

LC-049648-B

6. IF INDIAN, ALLOTTEE OR TRIBE NAME

NA

7. UNIT AGREEMENT NAME

8. FARM OR LEASE NAME, WELL NO.

Julia "B" 6 Federal #2

9. API WELL NO.

30-015-29982

10. FIELD AND POOL, OR WILDCAT

Red Lake; Q-GB-SA

11. SEC., T., R., M., OR BLOCK AND SURVEY OR AREA
Section 6-T18S-27E

12. COUNTY OR PARISH

Eddy County

13. STATE

New
Mexico17. NO. OF ACRES ASSIGNED
TO THIS WELL

40

20. ROTARY OR CABLE TOOLS*

Rotary

22. APPROX. DATE WORK WILL START*

January 1, 1998

23. PROPOSED CASING AND CEMENTING PROGRAM

SIZE OF HOLE	GRADE, SIZE OF CASING	WEIGHT PER FOOT	SETTING DEPTH	QUANTITY OF CEMENT
17 1/2"	14"	Conductor	40'	Redimix
12 1/4"	8 5/8", J-55	24 ppf	1050' 1150'	350 sx Lite + 200 sx Class C
7 7/8"	5 1/2", J-55	15.5 ppf	2800'	150 sx Lite + 350 sx Class C

* Cement will be circulated to surface on all casing strings.

Devon Energy plans to drill to 2800' +/- to test the San Andres Formation for commercial quantities of oil. If the San Andres is deemed non-commercial, the wellbore will be plugged and abandoned per Federal regulations. Programs to adhere to onshore oil and gas regulations are outlined in the following exhibits and attachments.

Drilling Program

Surface Use and Operating Plan

Exhibit #1 - Blowout Prevention Equipment/

Choke Manifold

Exhibit #2 - Location and Elevation Plat

Exhibit #3 - Planned Access Roads

Exhibit #4 - Wells Within a One Mile Radius

Exhibit #5 - Production Facilities Plan

Exhibit #6 - Rotary Rig Layout

Exhibit #7 - Casing Design Parameters and Factors

Exhibit #8 - H₂S Operating Plan

The undersigned accepts all applicable terms, conditions, stipulation, and restrictions concerning operations conducted on the leased land or portion thereof, as described above.

Bond Coverage: Nationwide
BLM Bond File No.: CO-1104APPROVAL SUBJECT TO
GENERAL REQUIREMENTS AND
SPECIAL STIPULATIONS
ATTACHEDPosted ID 1
N & API
12-29-97acc
12/29/97

IN ABOVE SPACE DESCRIBE PROPOSED PROGRAM: If proposal is to deepen, give data on present productive zone and proposed new productive zone. If proposal is to drill or deepen directionally, give pertinent data on subsurface locations and measured and true vertical depths. Give blowout preventer program, if any.

24.

SIGNED

E. L. Buttross, Jr.

TITLE

E. L. BUTTROSS, JR.
DISTRICT ENGINEER

DATE November 12, 1997

*(This space for Federal or State office use)

PERMIT NO.

APPROVAL DATE

Application approval does not warrant or certify that the applicant holds legal or equitable title to those rights in the subject lease which would entitle the applicant to conduct operations thereon.
CONDITIONS OF APPROVAL, IF ANY:

APPROVED BY

ADM. MINERALS

TITLE

DATE

12/18/97

See Instructions On Reverse Side

DISTRICT I
P.O. Box 1980, Hobbs, NM 88240

DISTRICT II
P.O. Drawer DD, Artesia, NM 88210

DISTRICT III
1000 Rio Brazos Rd., Aztec, NM 87410

State of New Mexico

Energy, Minerals and Natural Resources Department

Form C-102
Revised February 10, 1994
Instruction on back
Submit to Appropriate District Office
State Lease - 4 Copies
Fee Lease - 3 Copies

OIL CONSERVATION DIVISION

P.O. Box 2088
Santa Fe, New Mexico 87504-2088

☐ AMENDED REPORT

WELL LOCATION AND ACREAGE DEDICATION PLAT

API Number 30-015-29982	Pool Code 51300	Pool Name Red Lake (Q-GB-SA)
Property Code	Property Name Julia "B" 6 Federal	Well Number 2
OGRID No.	Operator Name Devon Energy Corporation	Elevation 3485'

Surface Location

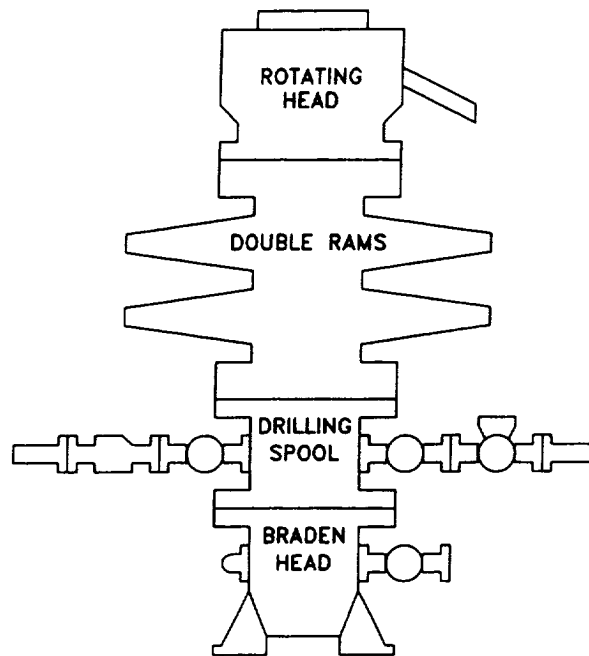
UL or lot No.	Section	Township	Range	Lot Idn	Feet from the	North/South line	Feet from the	East/West line	County
1	6	18 S	27 E		2485	South	990	East	Eddy

Bottom Hole Location If Different From Surface

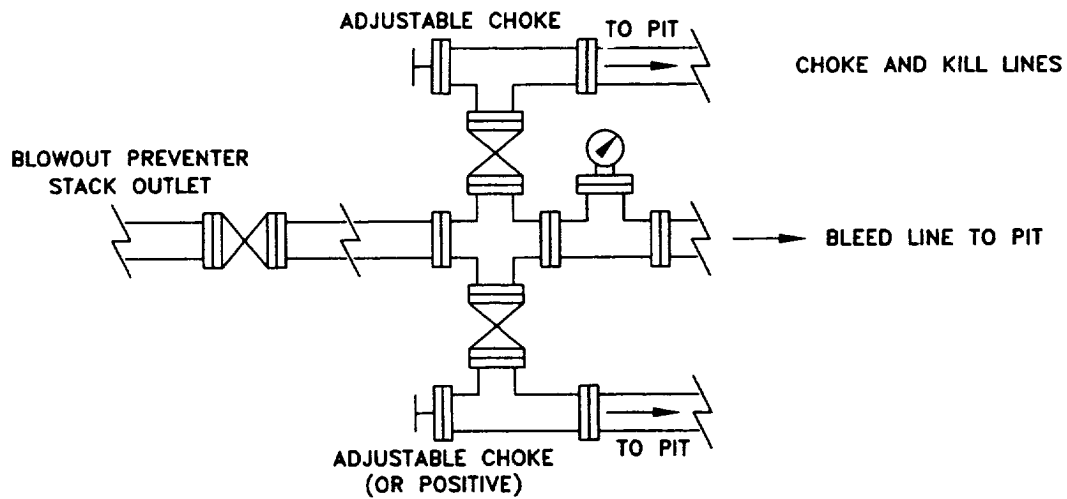
UL or lot No.	Section	Township	Range	Lot Idn	Feet from the	North/South line	Feet from the	East/West line	County
Dedicated Acres		Joint or Infill		Consolidation Code		Order No.			

NO ALLOWABLE WILL BE ASSIGNED TO THIS COMPLETION UNTIL ALL INTERESTS HAVE BEEN CONSOLIDATED
OR A NON-STANDARD UNIT HAS BEEN APPROVED BY THE DIVISION

				OPERATOR CERTIFICATION I hereby certify the the information contained herein is true and complete to the best of my knowledge and belief <u>E.L. Buttross Jr.</u> Signature E.L. Buttross, Jr. Printed Name District Engineer Title November 14, 1997 Date	
				SURVEYOR CERTIFICATION I hereby certify that the well location shown on this plat was plotted from field notes of actual surveys made by me or under my supervision and that the same is true and correct to the best of my belief <u>October 30, 1997</u> Date Surveyed <u>[Signature]</u> Signature & Seal of Professional Surveyor W.O. No. 7576e Certificate No. Gary L. Jones 7977 BASIN SURVEYS	



CHOKE MANIFOLD REQUIREMENT (2000 psi WP)



devon

WEST RED LAKE
EDDY COUNTY, NEW MEXICO

SCHEMATIC
BLOWOUT PREVENTOR
(2000 PSI MINIMUM WP)

WRLBOP	

EB

11/97

Attachment to Exhibit #1
NOTES REGARDING BLOWOUT PREVENTORS
Julia "B" 6 Federal #2
Eddy County, New Mexico

1. Drilling nipple will be constructed so it can be removed mechanically without the aid of a welder. The minimum internal diameter will equal BOP bore.
2. Wear ring will be properly installed in head.
3. Blowout preventor and all associated fittings will be in operable condition to withstand a minimum 2000 psi working pressure.
4. All fittings will be flanged.
5. A full bore safety valve tested to a minimum 2000 psi WP with proper thread connections will be available on the rotary rig floor at all times.
6. All choke lines will be anchored to prevent movement.
7. All BOP equipment will be equal to or larger in bore than the internal diameter of the last casing string.
8. Will maintain a Kelly cock attached to the Kelly.
9. Hand wheels and wrenches will be properly installed and tested for safe operation.
10. All BOP equipment will meet API standards and include a minimum 40 gallon accumulator having two independent means of power to initiate closing operation.