

UNITED STATES
DEPARTMENT OF THE INTERIOR
BUREAU OF LAND MANAGEMENTSUBMIT IN TRIPLICATE*
(See other instr. on
reverse side)

Form approved.

dhy

APPLICATION FOR PERMIT TO DRILL OR DEEPEN

1a. TYPE OF WORK: DRILL ☒ DEEPEN ☐b. TYPE OF WELL: OIL WELL ☒ GAS WELL ☐ Other ☐ SINGLE ZONE ☐ MULTIPLE ZONE ☐2. NAME OF OPERATOR
DEVON ENERGY CORPORATION (NEVADA) 61373. ADDRESS AND TELEPHONE NO.
20 N. BROADWAY, SUITE 1500, OKC, OK 73102 (405) 552-45114. LOCATION OF WELL (Report location clearly and in accordance with any State requirements)*
At surface 2310' FNL & 330' FEL, Unit "H"
At top proposed prod. zone (SAME)14. DISTANCE IN MILES AND DIRECTION FROM NEAREST TOWN OR POST OFFICE*
Approximately 7 miles southeast of Artesia, NM15. DISTANCE FROM PROPOSED LOCATION TO NEAREST PROPERTY OR LEASE LINE, FT. 330'
Also to nearest drilg unit line if any)16. NO. OF ACRES IN LEASE 80
18. DISTANCE FROM PROPOSED LOCATION* TO NEAREST WELL, DRILLING, COMPLETED, OR APPLIED FOR, ON THIS LEASE, FT. 600'
19. PROPOSED DEPTH 2800'21. ELEVATIONS (Show whether DF, RT, GR, etc.)
GR 3535'

Roswell Controlled Water Basin

5. LEASE DESIGNATION AND SERIAL NO.
LC-026874 E 064384
6. IF INDIAN, ALLOTTEE OR TRIBE NAME
NA
7. UNIT AGREEMENT NAME
8. FARM OR LEASE NAME, WELL NO.
Carter Collier 5 Federal #2 22220
9. API WELL NO.
30-015- 29983
10. FIELD AND POOL, OR WILDCAT
Red Lake; Q-GB-SA 51300
11. SEC., T., R., M., OR BLOCK AND SURVEY OR AREA
Section 5-T18S-27E12. COUNTY OR PARISH
Eddy County
13. STATE
New Mexico17. NO. OF ACRES ASSIGNED TO THIS WELL
4020. ROTARY OR CABLE TOOLS*
Rotary22. APPROX. DATE WORK WILL START*
January 1, 1998

PROPOSED CASING AND CEMENTING PROGRAM				
SIZE OF HOLE	GRADE, SIZE OF CASING	WEIGHT PER FOOT	SETTING DEPTH	QUANTITY OF CEMENT
17 1/2"	14"	Conductor	40'	Redimix
12 1/4"	8 5/8", J-55	24 ppf	1050'	350 sx Lite + 200 sx Class C
7 7/8"	5 1/2", J-55	15.5 ppf	2800'	150 sx Lite + 350 sx Class C

* Cement will be circulated to surface on all casing strings.

Devon Energy plans to drill to 2800' +/- to test the San Andres Formation for commercial quantities of oil. If the San Andres is deemed non-commercial, the wellbore will be plugged and abandoned per Federal regulations. Programs to adhere to onshore oil and gas regulations are outlined in the following exhibits and attachments.

Drilling Program
Surface Use and Operating Plan
Exhibit #1 - Blowout Prevention Equipment/
Choke Manifold
Exhibit #2 - Location and Elevation Plat
Exhibit #3 - Planned Access Roads
Exhibit #4 - Wells Within a One Mile Radius
Exhibit #5 - Production Facilities Plan
Exhibit #6 - Rotary Rig Layout
Exhibit #7 - Casing Design Parameters and Factors
Exhibit #8 - H₂S Operating Plan

The undersigned accepts all applicable terms, conditions, stipulation, and restrictions concerning operations conducted on the leased land or portion thereof, as described above.

Bond Coverage: Nationwide
BLM Bond File No.: CO-1104Approval Subject to
General Requirements and
Special Stipulations
Attached

IN ABOVE SPACE DESCRIBE PROPOSED PROGRAM: If proposal is to deepen, give data on present productive zone and proposed new productive zone. If proposal is to drill or deepen directionally, give pertinent data on subsurface locations and measured and true vertical depths. Give blowout preventer program, if any.

24

SIGNED E. L. Buttross Jr. TITLE E. L. BUTTROSS, JR. DATE November 10, 1997

*(This space for Federal or State office use)

PERMIT NO. _____ APPROVAL DATE _____

Application approval does not warrant or certify that the applicant holds legal or equitable title to those rights in the subject lease which would entitle the applicant to conduct operations thereon.
CONDITIONS OF APPROVAL, IF ANY:APPROVED BY ADM MINERALS TITLE ADM MINERALS DATE 12/18/97
See Instructions On Reverse Side

Title 18 U.S.C. Section 1001, makes it a crime for any person knowingly and willfully to make to any department or agency of the United States any false, fictitious or fraudulent statements or representations as to any matter within its jurisdiction

DISTRICT I
P.O. Box 1980, Hobbs, NM 88240

State of New Mexico
Energy, Minerals and Natural Resources Department

Form C-102
Revised February 10, 1994
Instruction on back
Submit to Appropriate District Office
State Lease - 4 Copies
Fee Lease - 3 Copies

DISTRICT II
P.O. Drawer DD, Artesia, NM 88210

DISTRICT III
1000 Rio Brazos Rd., Aztec, NM 87410

OIL CONSERVATION DIVISION
P.O. Box 2088
Santa Fe, New Mexico 87504-2088

☐ AMENDED REPORT

WELL LOCATION AND ACREAGE DEDICATION PLAT

API Number 30-015-29983	Pool Code 51300	Pool Name Red Lake (Q-GB-SA)
Property Code	Property Name CARTER COLLIER "5" FEDERAL	Well Number 2
OGRID No.	Operator Name DEVON ENERGY CORPORATION	Elevation 3535'

Surface Location

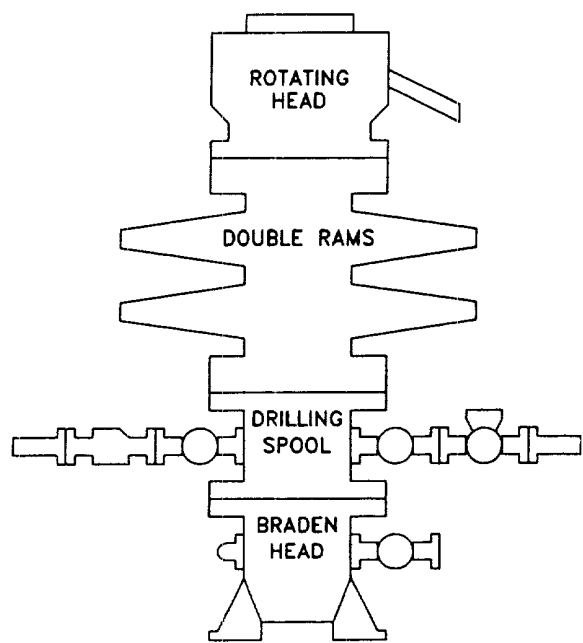
UL or lot No.	Section	Township	Range	Lot Idn	Feet from the	North/South line	Feet from the	East/West line	County
H	5	18 S	27 E		2310	NORTH	330	EAST	EDDY

Bottom Hole Location If Different From Surface

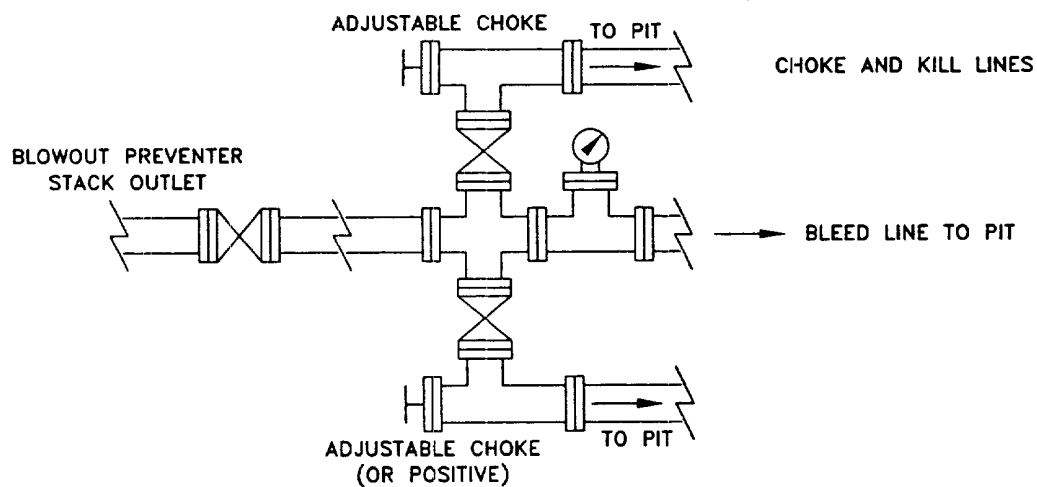
UL or lot No.	Section	Township	Range	Lot Idn	Feet from the	North/South line	Feet from the	East/West line	County
Dedicated Acres 40	Joint or Infill	Consolidation Code	Order No.						


**NO ALLOWABLE WILL BE ASSIGNED TO THIS COMPLETION UNTIL ALL INTERESTS HAVE BEEN CONSOLIDATED
OR A NON-STANDARD UNIT HAS BEEN APPROVED BY THE DIVISION**

				<p>OPERATOR CERTIFICATION</p> <p>I hereby certify the the information contained herein is true and complete to the best of my knowledge and belief.</p> <p><i>E. L. Buttross, Jr.</i> Signature E. L. Buttross, Jr. Printed Name District Engineer Title 11/18/97 Date</p>	
				<p>SURVEYOR CERTIFICATION</p> <p>I hereby certify that the well location shown on this plat was plotted from field notes of actual surveys made by me or under my supervision, and that the same is true and correct to the best of my belief.</p> <p>November 03, 1997 Date Surveyed Signature & Seal of Professional Surveyor 7977 WFO No. 7516EE Certified No. Gary L. Jones 7977</p>	
				<p>BASIN SURVEYS</p>	



CHOKE MANIFOLD REQUIREMENT (2000 psi WP)



	
WEST RED LAKE EDDY COUNTY, NEW MEXICO	
SCHEMATIC BLOWOUT PREVENTOR (2000 PSI MINIMUM WP)	
WRLBOP	
EB	11/97

1. Drilling nipple will be constructed so it can be removed mechanically without the aid of a welder. The minimum internal diameter will equal BOP bore.
2. Wear ring will be properly installed in head.
3. Blowout preventor and all associated fittings will be in operable condition to withstand a minimum 2000 psi working pressure.
4. All fittings will be flanged.
5. A full bore safety valve tested to a minimum 2000 psi WP with proper thread connections will be available on the rotary rig floor at all times.
6. All choke lines will be anchored to prevent movement.