

UNITED STATES DEPARTMENT OF THE INTERIOR
BUREAU OF LAND MANAGEMENT

SUBMIT IN

Form approved.

APPLICATION FOR PERMIT TO DRILL OR DEEPEN

1a. TYPE OF WORK: DRILL ☒ DEEPEN ☐

b. TYPE OF WELL:

OIL WELL ☒ GAS WELL ☐ Other ☐ SINGLE ZONE ☐ MULTIPLE ZONE ☐

2. NAME OF OPERATOR

DEVON ENERGY CORPORATION (NEVADA)

3. ADDRESS AND TELEPHONE NO.

20 N. BROADWAY, SUITE 1500, OKC, OK 73102 (405) 235-3611

4. LOCATION OF WELL (Report location clearly and in accordance with instructions)*

At surface 1090' FNL & 2250' FWL, Unit "C"

At top proposed prod. zone (SAME)

14. DISTANCE IN MILES AND DIRECTION FROM NEAREST TOWN OR POST OFFICE*

Approximately 7 miles southeast of Artesia, NM

15. DISTANCE FROM PROPOSED

LOCATION TO NEAREST PROPERTY OR LEASE LINE, FT. 1090'
(Also to nearest drilg. unit line if any)

18. DISTANCE FROM PROPOSED LOCATION*

TO NEAREST WELL, DRILLING, COMPLETED, OR APPLIED FOR, ON THIS LEASE, FT. 600'

21. ELEVATIONS (Show whether DF, RT, GR, etc.)

GR 3421'

16. NO. OF ACRES IN LEASE

159

19. PROPOSED DEPTH

2800'

5. LEASE DESIGNATION AND SERIAL NO.

LC-069274

6. IF INDIAN, ALLOTTEE OR TRIBE NAME
NA

7. UNIT AGREEMENT NAME

8. FARM OR LEASE NAME, WELL NO.

Fred 6 Federal #6

9. API WELL NO.

10. FIELD AND POOL, OR WILDCAT

Red Lake; Q-GB-SA

11. SEC., T., R., M., OR BLOCK AND SURVEY OR AREA
Section 6-T18S-27E

12. COUNTY OR PARISH
Eddy County

13. STATE
New Mexico

17. NO. OF ACRES ASSIGNED TO THIS WELL
40

20. ROTARY OR CABLE TOOLS*
Rotary

22. APPROX. DATE WORK WILL START*
March 1, 1998

23.

PROPOSED CASING AND CEMENT

SIZE OF HOLE	GRADE, SIZE OF CASING	WEIGHT PER FOOT	SETTING DEPTH	QUANTITY OF CEMENT
17 1/2"	14"	Conductor	40'	Redimix
12 1/4"	8 5/8", J-55	24 ppf	1150'	
7 7/8"	5 1/2", J-55	15.5 ppf	2800'	150 sx Lite + 350 sx Class C

* Cement will be circulated to surface on all casing strings.

Devon Energy plans to drill to 2800' +/- to test the San Andres Formation for commercial quantities of oil. If the San Andres is deemed non-commercial, the wellbore will be plugged and abandoned per Federal regulations. Programs to adhere to onshore oil and gas regulations are outlined in the following exhibits and attachments.

Drilling Program

Surface Use and Operating Plan

Exhibit #1 - Blowout Prevention Equipment/

Choke Manifold

Exhibit #2 - Location and Elevation Plat

Exhibit #3 - Planned Access Roads

Exhibit #4 - Wells Within a One Mile Radius

Exhibit #5 - Production Facilities Plan

Exhibit #6 - Rotary Rig Layout

Exhibit #7 - Casing Design Parameters and Factors

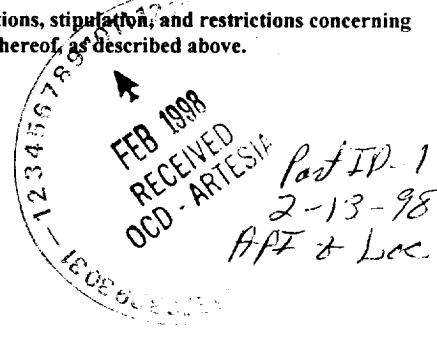
Exhibit #8 - H₂S Operating Plan

The undersigned accepts all applicable terms, conditions, stipulations, and restrictions concerning operations conducted on the leased land or portion thereof, as described above.

Bond Coverage: Nationwide

BLM Bond File No.: CO-1104

APPROVAL SUBJECT TO
GENERAL REQUIREMENTS AND
SPECIAL STIPULATIONS
ATTACHED



IN ABOVE SPACE DESCRIBE PROPOSED PROGRAM: If proposal is to deepen, give data on present productive zone and proposed new productive zone. If proposal is to drill or deepen directionally, give pertinent data on subsurface locations and measured and true vertical depths. Give blowout preventer program, if any.

24.

SIGNED

E. L. Buttross Jr.

TITLE

E. L. BUTTROSS, JR.

DISTRICT ENGINEER

DATE

1/7/98

*(This space for Federal or State office use)

PERMIT NO.

APPROVAL DATE

Application approval does not warrant or certify that the applicant holds legal or equitable title to those rights in the subject lease which would entitle the applicant to conduct operations thereon.

CONDITIONS OF APPROVAL, IF ANY:

APPROVED BY

(ORIG. SGD) ANTONIO A. LOPEZ

TITLE

Acting

ADM. MINERALS

DATE

2-9-98

See Instructions On Reverse Side

RECEIVED
JAN 9 1970
U.S. AIR FORCE
HONOLULU

DISTRICT I
P.O. Box 1980, Hobbs, NM 88240

DISTRICT II
P.O. Drawer DD, Artesia, NM 88210

DISTRICT III
1000 Rio Brazos Rd., Aztec, NM 87410

Exhibit #2

State of New Mexico
Energy, Minerals and Natural Resources Department

Form C-102
Revised February 10, 1994
Instruction on back
Submit to Appropriate District Office
State Lease - 4 Copies
Fee Lease - 3 Copies

OIL CONSERVATION DIVISION

P.O. Box 2088
Santa Fe, New Mexico 87504-2088

☐ AMENDED REPORT

WELL LOCATION AND ACREAGE DEDICATION PLAT

API Number	Pool Code	Pool Name
		Red Lake (Q-GB-SA)
Property Code	Property Name	Well Number
	FRED "6" FEDERAL	6
OGRID No.	Operator Name	Elevation
	DEVON ENERGY CORPORATION	3421'

Surface Location

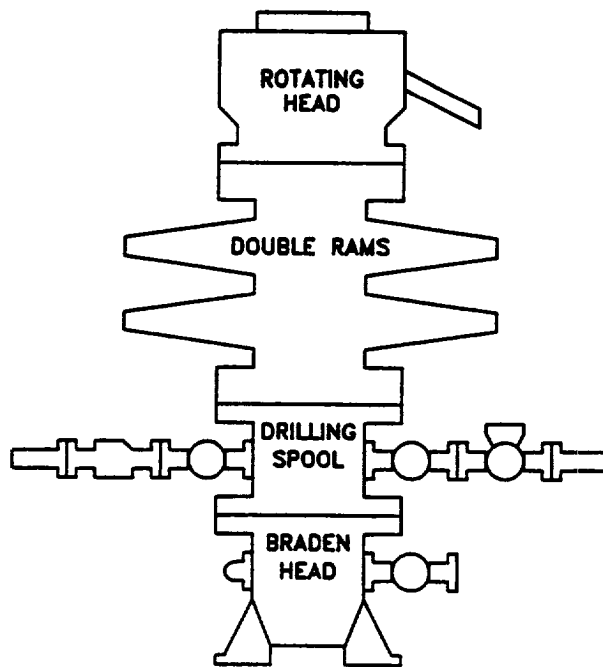
UL or lot No.	Section	Township	Range	Lot Idn	Feet from the	North/South line	Feet from the	East/West line	County
C	6	18 S	27 E		1090	NORTH	2250	WEST	EDDY

Bottom Hole Location If Different From Surface

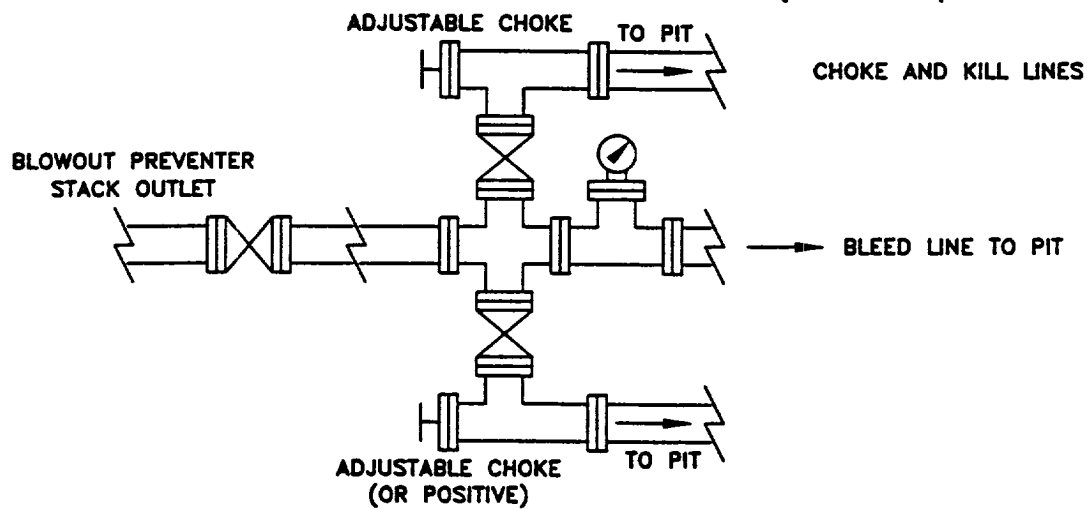
UL or lot No.	Section	Township	Range	Lot Idn	Feet from the	North/South line	Feet from the	East/West line	County
Dedicated Acres	Joint or Infill	Consolidation Code	Order No.						

NO ALLOWABLE WILL BE ASSIGNED TO THIS COMPLETION UNTIL ALL INTERESTS HAVE BEEN CONSOLIDATED
OR A NON-STANDARD UNIT HAS BEEN APPROVED BY THE DIVISION

	<p>OPERATOR CERTIFICATION</p> <p>I hereby certify the the information contained herein is true and complete to the best of my knowledge and belief.</p> <p><u>E. L. Buttross Jr.</u> Signature</p> <p><u>E. L. Buttross, Jr.</u> Printed Name</p> <p><u>District Engineer</u> Title</p> <p><u>January 7, 1998</u> Date</p> <p>SURVEYOR CERTIFICATION</p> <p>I hereby certify that the well location shown on this plat was plotted from field notes of actual surveys made by me or under my supervision, and that the same is true and correct to the best of my belief.</p> <p><u>November 03, 1997</u> Date Surveyed</p> <p><u>[Signature]</u> Signature & Seal of Professional Surveyor</p> <p><u>NO. No. 7578</u> Certificate No.</p> <p><u>Professional Surveyor Jones 7977</u> Professional Surveyor</p> <p>BASIN SURVEYS</p>
--	---



CHOKE MANIFOLD REQUIREMENT (2000 psi WP)



devon

WEST RED LAKE

EDDY COUNTY, NEW MEXICO

SCHMATIC
BLOWOUT PREVENTOR
(2000 PSI MINIMUM WP)

WRLBOP	

03

11/87

Attachment to Exhibit #1
NOTES REGARDING BLOWOUT PREVENTORS
Fred 6 Federal #6
Eddy County, New Mexico

1. Drilling nipple will be constructed so it can be removed mechanically without the aid of a welder. The minimum internal diameter will equal BOP bore.
2. Wear ring will be properly installed in head.
3. Blowout preventor and all associated fittings will be in operable condition and tested to 1000 psi with the rig pump.
4. All fittings will be flanged.
5. A full bore safety valve with proper thread connections will be available on the rotary rig floor at all times.
6. All choke lines will be anchored to prevent movement.
7. All BOP equipment will be equal to or larger in bore than the internal diameter of the last casing string.
8. Will maintain a Kelly cock attached to the Kelly.
9. Hand wheels and wrenches will be properly installed and tested for safe operation.
10. All BOP equipment will meet API standards and include a minimum 40 gallon accumulator having two independent means of power to initiate closing operation.