

UNITED STATES DEPARTMENT OF THE INTERIOR
BUREAU OF LAND MANAGEMENT

SUBMIT IN

Form approved.

APPLICATION FOR PERMIT TO DRILL OR DEEPEN

1a. TYPE OF WORK: DRILL ☒ DEEPEN ☐

b. TYPE OF WELL:

OIL WELL ☒ GAS WELL ☐ Other ☐ SINGLE ZONE ☐ MULTIPLE ZONE ☐

2. NAME OF OPERATOR
DEVON ENERGY CORPORATION (NEVADA) 6137

3. ADDRESS AND TELEPHONE NO.
20 N. BROADWAY, SUITE 1500, OKC, OK 73102 (405) 552-4511

4. LOCATION OF WELL (Report location clearly and in accordance with applicable requirements)*
At surface 2460' FNL & 2310' FWL, Unit "F"
At top proposed prod. zone (SAME)

14. DISTANCE IN MILES AND DIRECTION FROM NEAREST TOWN OR POST OFFICE*
Approximately 7 miles southeast of Artesia, NM

15. DISTANCE FROM PROPOSED LOCATION TO NEAREST PROPERTY OR LEASE LINE, FT. 2310'
(Also to nearest drlg. unit line if any)

18. DISTANCE FROM PROPOSED LOCATION* TO NEAREST WELL, DRILLING, COMPLETED, OR APPLIED FOR, ON THIS LEASE, FT. 500'

21. ELEVATIONS (Show whether DF, RT, GR, etc.)
GR 3411'

23. PROPOSED CASING AND CEMENTING PROGRAM					16. NO. OF ACRES IN LEASE	17. NO. OF ACRES ASSIGNED TO THIS WELL	19. PROPOSED DEPTH	20. ROTARY OR CABLE TOOLS*
SIZE OF HOLE	GRADE, SIZE OF CASING	WEIGHT PER FOOT	SETTING DEPTH	QUANTITY OF CEMENT	120	40	2800'	Rotary
17 1/2"	14"	Conductor	40'	Redimix				
12 1/4"	8 5/8", J-55	24 ppf	1150'	150 sx Lite + 350 sx Class C				
7 7/8"	5 1/2", J-55	15.5 ppf	2800'					

* Cement will be circulated to surface on all casing strings.

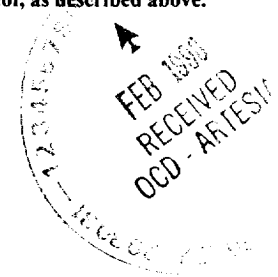
Devon Energy plans to drill to 2800' +/- to test the San Andres Formation for commercial quantities of oil. If the San Andres is deemed non-commercial, the wellbore will be plugged and abandoned per Federal regulations. Programs to adhere to onshore oil and gas regulations are outlined in the following exhibits and attachments.

Drilling Program
Surface Use and Operating Plan
Exhibit #1 - Blowout Prevention Equipment/
Choke Manifold
Exhibit #2 - Location and Elevation Plat
Exhibit #3 - Planned Access Roads
Exhibit #4 - Wells Within a One Mile Radius
Exhibit #5 - Production Facilities Plan
Exhibit #6 - Rotary Rig Layout
Exhibit #7 - Casing Design Parameters and Factors
Exhibit #8 - H₂S Operating Plan

The undersigned accepts all applicable terms, conditions, stipulations, and restrictions concerning operations conducted on the leased land or portion thereof, as described above.

Bond Coverage: Nationwide
BLM Bond File No.: CO-1104

APPROVAL SUBJECT TO
GENERAL REQUIREMENTS AND
SPECIAL STIPULATIONS
ATTACHED



IN ABOVE SPACE DESCRIBE PROPOSED PROGRAM: If proposal is to deepen, give data on present productive zone and proposed new productive zone. If proposal is to drill or deepen directionally, give pertinent data on subsurface locations and measured and true vertical depths. Give blowout preventer program, if any.

24.

SIGNED E. L. Buttross, Jr. TITLE DISTRICT ENGINEER DATE 1/8/98

*(This space for Federal or State office use)

PERMIT NO. _____ APPROVAL DATE _____

Application approval does not warrant or certify that the applicant holds legal or equitable title to those rights in the subject lease which would entitle the applicant to conduct operations thereon.

CONDITIONS OF APPROVAL, IF ANY:

APPROVED BY (ORIG. SCD.) ARMANDO A. LOPEZ TITLE Acting ADM. MINERALS DATE 2-9-98
See Instructions On Reverse Side

DISTRICT I
P.O. Box 1960, Hobbs, NM 88240

State of New Mexico
Energy, Minerals and Natural Resources Department

Form C-102
Revised February 10, 1994
Instruction on back
Submit to Appropriate District Office
State Lease - 4 Copies
Fee Lease - 3 Copies

DISTRICT II
P.O. Drawer DD, Artesia, NM 88210

OIL CONSERVATION DIVISION

DISTRICT III
1600 Rio Brazos Rd., Aztec, NM 87410

P.O. Box 2088
Santa Fe, New Mexico 87504-2088

☐ AMENDED REPORT

WELL LOCATION AND ACREAGE DEDICATION PLAT

API Number	Pool Code	Pool Name Red Lake (Q-GB-SA)
Property Code	Property Name PATTON '6" FEDERAL	Well Number 6
OGRID No.	Operator Name DEVON ENERGY CORPORATION	Elevation 3411'

Surface Location

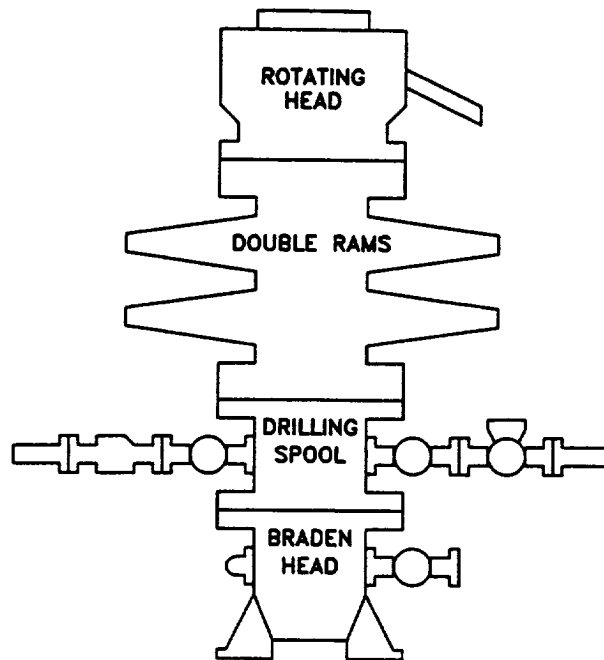
UL or lot No.	Section	Township	Range	Lot ldn	Feet from the	North/South line	Feet from the	East/West line	County
F	6	18 S	27 E		2460	NORTH	2310	WEST	EDDY

Bottom Hole Location If Different From Surface

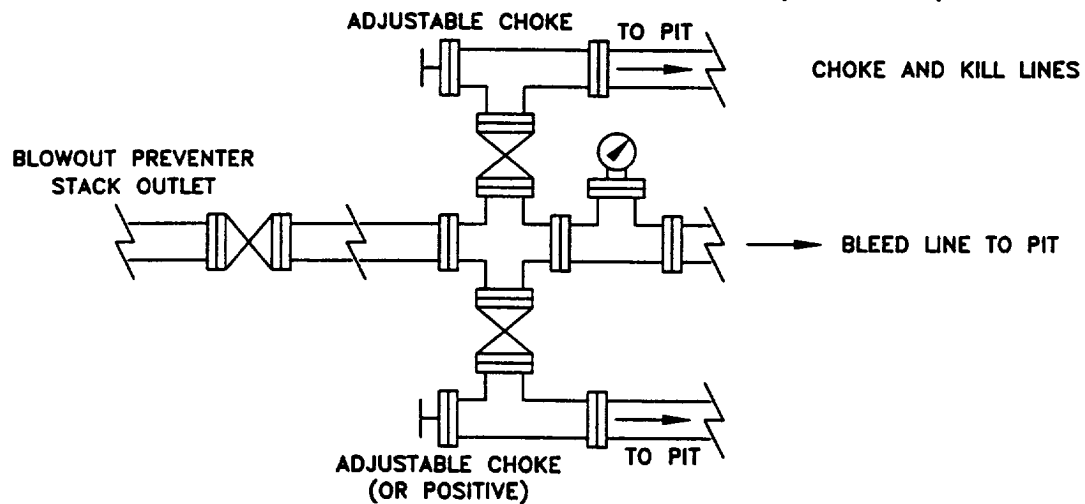
UL or lot No.	Section	Township	Range	Lot ldn	Feet from the	North/South line	Feet from the	East/West line	County
Dedicated Acres	Joint or Infill	Consolidation Code	Order No.						

NO ALLOWABLE WILL BE ASSIGNED TO THIS COMPLETION UNTIL ALL INTERESTS HAVE BEEN CONSOLIDATED
OR A NON-STANDARD UNIT HAS BEEN APPROVED BY THE DIVISION

	OPERATOR CERTIFICATION I hereby certify the the information contained herein is true and complete to the best of my knowledge and belief. <u>E. L. Buttross Jr.</u> Signature <u>E.L. Buttross, Jr.</u> Printed Name <u>District Engineer</u> Title <u>January 8, 1998</u> Date
	SURVEYOR CERTIFICATION I hereby certify that the well location shown on this plat was plotted from field notes of actual surveys made by me or under my supervision, and that the same is true and correct to the best of my belief. <u>December 9, 1997</u> Date Surveyed <u>GARY L. JONES</u> Signature Professional Surveyor State of New Mexico No. 7576 Certificate No. 7977 BASIN SURVEYS



CHOKE MANIFOLD REQUIREMENT (2000 psi WP)



devon

WEST RED LAKE

EDDY COUNTY, NEW MEXICO

SCHMATIC
BLOWOUT PREVENTOR
(2000 PSI MINIMUM WP)

WRLEOP	

CB

11/97

Attachment to Exhibit #1
NOTES REGARDING BLOWOUT PREVENTORS
Patton 6 Federal #6
Eddy County, New Mexico

1. Drilling nipple will be constructed so it can be removed mechanically without the aid of a welder. The minimum internal diameter will equal BOP bore.
2. Wear ring will be properly installed in head.
3. Blowout preventor and all associated fittings will be in operable condition and tested to 1000 psi with the rig pump.
4. All fittings will be flanged.
5. A full bore safety valve with proper thread connections will be available on the rotary rig floor at all times.
6. All choke lines will be anchored to prevent movement.
7. All BOP equipment will be equal to or larger in bore than the internal diameter of the last casing string.
8. Will maintain a Kelly cock attached to the Kelly.
9. Hand wheels and wrenches will be properly installed and tested for safe operation.
10. All BOP equipment will meet API standards and include a minimum 40 gallon accumulator having two independent means of power to initiate closing operation.