

DISTRICT I
P.O. Box 1980, Hobbs, NM 88240

State of New Mexico
Energy, Minerals and Natural Resources Department

Form C-102
Revised February 10, 1994
Instruction on back
Submit to Appropriate District Office
State Lease - 4 Copies
Fee Lease - 3 Copies

DISTRICT II
P.O. Drawer DD, Artesia, NM 88210

DISTRICT III
1000 Rio Brazos Rd., Aztec, NM 87410

OIL CONSERVATION DIVISION
P.O. Box 2088
Santa Fe, New Mexico 87504-2088

☐ AMENDED REPORT

WELL LOCATION AND ACREAGE DEDICATION PLAT

API Number	Pool Code	Pool Name Morrow
Property Code	Property Name LOCO "ASI" FEDERAL COM.	Well Number 1
OGRID No. 025575	Operator Name YATES PETROLEUM CORPORATION	Elevation 3486

Surface Location

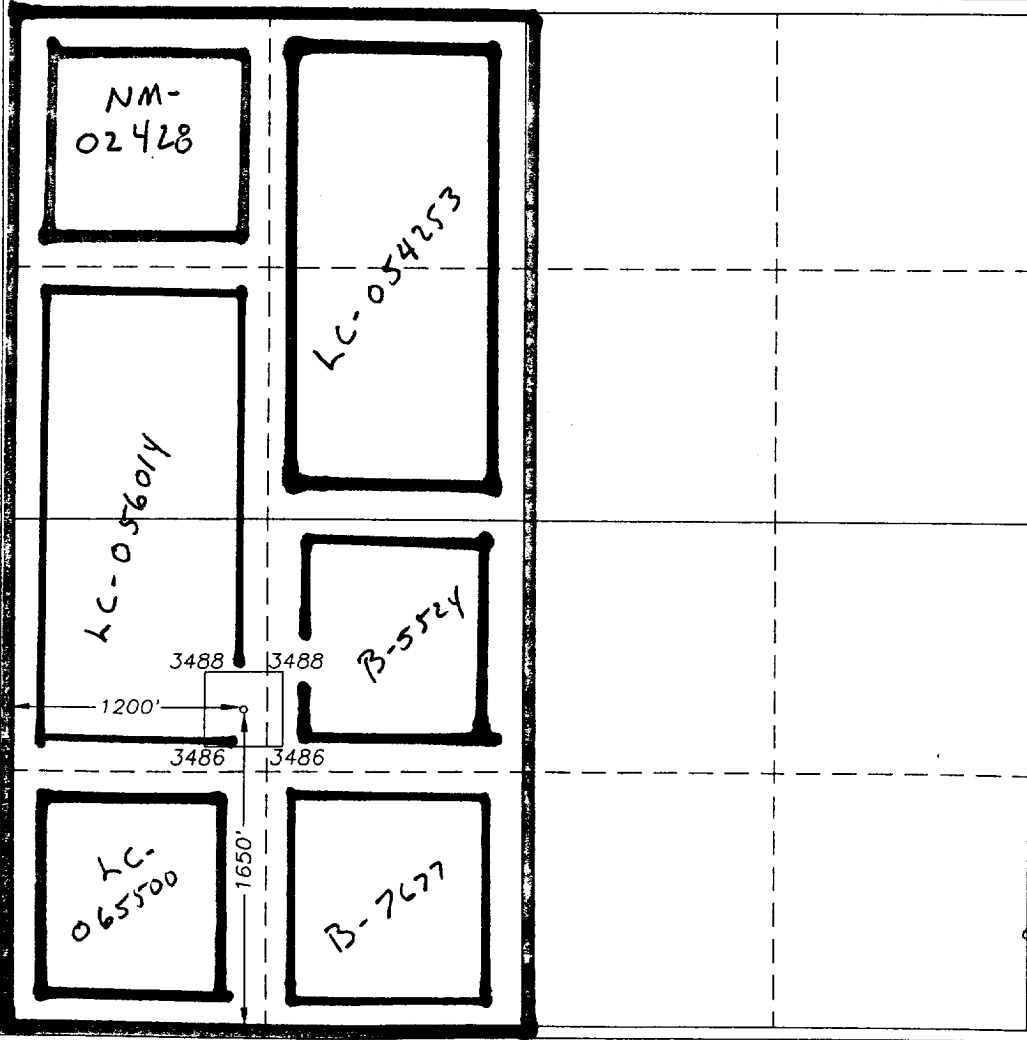
UL or lot No. L	Section 10	Township 18S	Range 29E	Lot Idn	Feet from the 1650	North/South line SOUTH	Feet from the 1200	East/West line WEST	County EDDY
--------------------	---------------	-----------------	--------------	---------	-----------------------	---------------------------	-----------------------	------------------------	----------------

Bottom Hole Location If Different From Surface

UL or lot No.	Section	Township	Range	Lot Idn	Feet from the	North/South line	Feet from the	East/West line	County
---------------	---------	----------	-------	---------	---------------	------------------	---------------	----------------	--------

Dedicated Acres 320	Joint or Infill	Consolidation Code	Order No.
------------------------	-----------------	--------------------	-----------

NO ALLOWABLE WILL BE ASSIGNED TO THIS COMPLETION UNTIL ALL INTERESTS HAVE BEEN CONSOLIDATED
OR A NON-STANDARD UNIT HAS BEEN APPROVED BY THE DIVISION



OPERATOR CERTIFICATION	
I hereby certify the the information contained herein is true and complete to the best of my knowledge and belief.	
Signature <i>Ken Beardemphl</i>	
Printed Name Ken Beardemphl	
Title Landman	
Date 3-20-98	
SURVEYOR CERTIFICATION	
I hereby certify that the well location shown on this plat was plotted from field notes of actual surveys made by me or under my supervision, and that the same is true and correct to the best of my belief.	
Date Surveyed 3/03/98	
Signature <i>Werschell L. Jones</i>	
Professional Seal Professional Surveyor NEW MEXICO 3640	
Certified by Werschell L. Jones RLS 3640 LOCO "ASI" FEDERAL COM. GENERAL SURVEYING COMPANY	