

UNITED STATES  
DEPARTMENT OF THE INTERIOR  
BUREAU OF LAND MANAGEMENTSUBMIT IN  
(See other ins.  
reverse side)Form approved. *cl/h*

## APPLICATION FOR PERMIT TO DRILL OR DEEPEN

1a. TYPE OF WORK: DRILL ☒ DEEPEN ☐

b. TYPE OF WELL:

OIL  
WELL ☒GAS  
WELL ☐Other ☐SINGLE  
ZONE ☐MULTIPLE  
ZONE ☐

2. NAME OF OPERATOR

DEVON ENERGY CORPORATION (NEVADA)

*6137*

3. ADDRESS AND TELEPHONE NO.

20 N. BROADWAY, SUITE 1500, OKC, OK 73102 (405) 552-4511

4. LOCATION OF WELL (Report location clearly and in accordance with any State requirements)\*

At surface 330' FNL &amp; 990' FEL, Unit "A"

At top proposed prod. zone (SAME)

*Lot 1*14. DISTANCE IN MILES AND DIRECTION FROM NEAREST TOWN OR POST OFFICE\*  
Approximately 7 miles southeast of Artesia, NM5. LEASE DESIGNATION AND SERIAL NO.  
LC-0643846. IF INDIAN, ALLOTTEE OR TRIBE NAME  
NA

7. UNIT AGREEMENT NAME

8. FARM OR LEASE NAME, WELL NO.

Carter Collier 5 Federal #8

*22220*

9. API WELL NO.

30-015- *30103*

10. FIELD AND POOL, OR WILDCAT

Red Lake; Q-GB-SA

*51300*11. SEC., T., R., M., OR BLOCK AND SURVEY OR AREA  
Section 5-T18S-27E12. COUNTY OR PARISH  
Eddy County13. STATE  
New  
Mexico15. DISTANCE FROM PROPOSED  
LOCATION TO NEAREST  
PROPERTY OR LEASE LINE, FT.

330'

16. NO. OF ACRES IN LEASE  
162RECEIVED  
OCD - ARTESIA17. NO. OF ACRES ASSIGNED  
TO THIS WELL  
4018. DISTANCE FROM PROPOSED LOCATION\*  
TO NEAREST WELL, DRILLING, COMPLETED,  
OR APPLIED FOR, ON THIS LEASE, FT.

1000'

19. PROPOSED DEPTH  
2800'20. ROTARY OR CABLE TOOLS\*  
Rotary21. ELEVATIONS (Show whether DF, RT, GR, etc.)  
GR 3503'22. APPROX. DATE WORK WILL START\*  
March 1, 1998

## PROPOSED CASING AND CEMENTING PROGRAM

SIZE OF HOLE	GRADE, SIZE OF CASING	WEIGHT PER FOOT	SETTING DEPTH	QUANTITY OF CEMENT
17 1/2"	14"	Conductor	40'	Redimix
12 1/4"	8 5/8", J-55	24 ppf	1150' <i>OK</i>	350 sx Lite + 200 sx Class C
7 7/8"	5 1/2", J-55	15.5 ppf	2800'	150 sx Lite + 350 sx Class C

\* Cement will be circulated to surface on all casing strings.

Devon Energy plans to drill to 2800' +/- to test the San Andres Formation for commercial quantities of oil. If the San Andres is deemed non-commercial, the wellbore will be plugged and abandoned per Federal regulations. Programs to adhere to onshore oil and gas regulations are outlined in the following exhibits and attachments.

## Drilling Program

Surface Use and Operating Plan

Exhibit #1 - Blowout Prevention Equipment/  
Choke Manifold

Exhibit #2 - Location and Elevation Plat

Exhibit #3 - Planned Access Roads

Exhibit #4 - Wells Within a One Mile Radius

Exhibit #5 - Production Facilities Plan

Exhibit #6 - Rotary Rig Layout

Exhibit #7 - Casing Design Parameters and Factors

Exhibit #8 - H<sub>2</sub>S Operating Plan

The undersigned accepts all applicable terms, conditions, stipulation, and restrictions concerning operations conducted on the leased land or portion thereof, as described above.

Bond Coverage: Nationwide

BLM Bond File No.: CO-

APPROVAL SUBJECT TO  
GENERAL REQUIREMENTS AND  
SPECIAL STIPULATIONS  
ATTACHED*Post FD-1  
2-27-98**HPE & LCC*

IN ABOVE SPACE DESCRIBE PROPOSED PROGRAM: If proposal is to deepen, give data on present productive zone and proposed new productive zone. If proposal is to drill or deepen directionally, give pertinent data on subsurface locations and measured and true vertical depths. Give blowout preventer program, if any.

24.

SIGNED

*E. J. Buttross Jr.*

TITLE

E. L. BUTTROSS, JR.

DISTRICT ENGINEER

DATE

*1/9/98*

\*(This space for Federal or State office use)

PERMIT NO.

APPROVAL DATE

Application approval does not warrant or certify that the applicant holds legal or equitable title to those rights in the subject lease which would entitle the applicant to conduct operations thereon.

CONDITIONS OF APPROVAL, IF ANY:

APPROVED BY

*(OFFICIAL SEAL) REMAINS & ETC*

TITLE

*Acting*

MINERALS

DATE

*2-12-98*

See Instructions On Reverse Side

DISTRICT I  
P.O. Box 1980, Hobbs, NM 88240

State of New Mexico  
Energy, Minerals and Natural Resources Department

Form C-102  
Revised February 10, 1994  
Instruction on back  
Submit to Appropriate District Office  
State Lease - 4 Copies  
Fee Lease - 3 Copies

DISTRICT II  
P.O. Drawer DD, Artesia, NM 88210

## OIL CONSERVATION DIVISION

DISTRICT III  
1000 Rio Brazos Rd., Aztec, NM 87410

P.O. Box 2088  
Santa Fe, New Mexico 87504-2088

☐ AMENDED REPORT

## WELL LOCATION AND ACREAGE DEDICATION PLAT

API Number	Pool Code	Pool Name Red Lake (Q-GB-SA)
Property Code	Property Name CARTER COLLIER "5" FEDERAL	Well Number 8
OGRID No.	Operator Name DEVON ENERGY CORPORATION	Elevation 3503'

## Surface Location

UL or lot No.	Section	Township	Range	Lot Idn	Feet from the	North/South line	Feet from the	East/West line	County
LOT 1	5	18 S	27 E		330	NORTH	990	EAST	EDDY

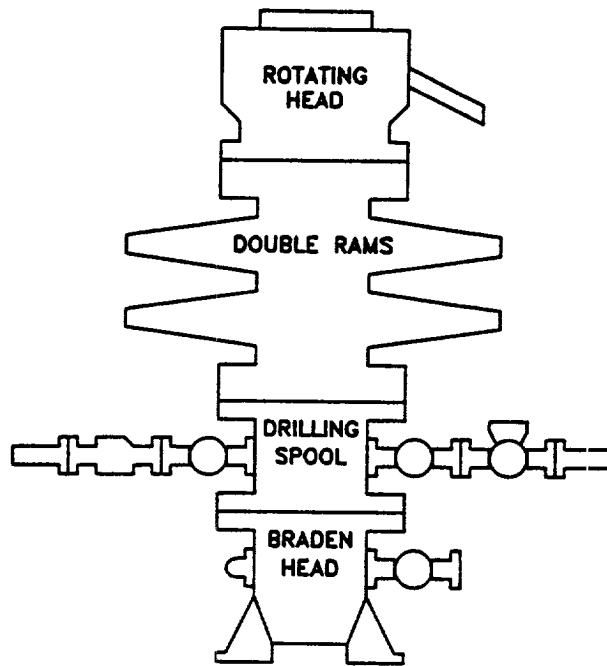
## Bottom Hole Location If Different From Surface

UL or lot No.	Section	Township	Range	Lot Idn	Feet from the	North/South line	Feet from the	East/West line	County

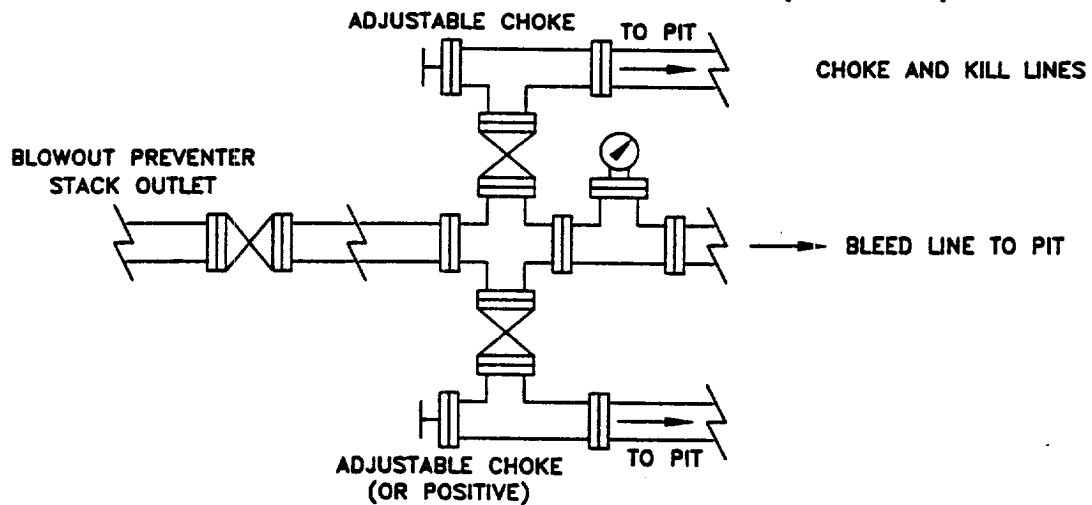
Dedicated Acres	Joint or Infill	Consolidation Code	Order No.

NO ALLOWABLE WILL BE ASSIGNED TO THIS COMPLETION UNTIL ALL INTERESTS HAVE BEEN CONSOLIDATED  
OR A NON-STANDARD UNIT HAS BEEN APPROVED BY THE DIVISION

LOT 4	LOT 3	LOT 2	LOT 1		<b>OPERATOR CERTIFICATION</b>  I hereby certify the the information contained herein is true and complete to the best of my knowledge and belief.  <u>E. L. Buttross Jr.</u> Signature  <u>E. L. Buttross, Jr.</u> Printed Name  <u>District Engineer</u> Title  <u>January 9, 1998</u> Date
					<b>SURVEYOR CERTIFICATION</b>  I hereby certify that the well location shown on this plat was plotted from field notes of actual surveys made by me or under my supervision, and that the same is true and correct to the best of my belief.  <u>October 31, 1997</u> Date Surveyed <u>ARY L JONES</u> Signature & Seal Professional Surveyor  Certificate No. 7576 Jones 7977 BASIN SURVEYS



## CHOKE MANIFOLD REQUIREMENT (2000 psi WP)



**devon**

**WEST RED LAKE**

GRAY COUNTY, NEW MEXICO

SCHEMATIC

**BLOWOUT PREVENTOR**

(2000 PSI MINIMUM WP)

WRLBOP	

ES

11/97

**Attachment to Exhibit #1**  
**NOTES REGARDING BLOWOUT PREVENTORS**  
**Carter Collier 5 Federal #8**  
**Eddy County, New Mexico**

1. Drilling nipple will be constructed so it can be removed mechanically without the aid of a welder. The minimum internal diameter will equal BOP bore.
2. Wear ring will be properly installed in head.
3. Blowout preventor and all associated fittings will be in operable condition and tested to 1000 psi with the rig pump.
4. All fittings will be flanged.
5. A full bore safety valve with proper thread connections will be available on the rotary rig floor at all times.
6. All choke lines will be anchored to prevent movement.
7. All BOP equipment will be equal to or larger in bore than the internal diameter of the last casing string.
8. Will maintain a Kelly cock attached to the Kelly.
9. Hand wheels and wrenches will be properly installed and tested for safe operation.
10. All BOP equipment will meet API standards and include a minimum 40 gallon accumulator having two independent means of power to initiate closing operation.