

UNITED STATES
DEPARTMENT OF THE INTERIOR
BUREAU OF LAND MANAGEMENT

SUBMIT IN
Form approved.

Division
811
ST ST.
ARTESIA, NM 88401

clgk

APPLICATION FOR PERMIT TO DRILL OR DEEPEN

1a. TYPE OF WORK: DRILL ☒ DEEPEN ☐

b. TYPE OF WELL:

OIL WELL ☒ GAS WELL ☐ Other ☐ SINGLE ZONE ☐ MULTIPLE ZONE ☐

2. NAME OF OPERATOR

DEVON ENERGY CORPORATION (NEVADA) 6137

3. ADDRESS AND TELEPHONE NO.

20 N. BROADWAY, SUITE 1500, OKC, OK 73102 (405) 552-4511

4. LOCATION OF WELL (Report location clearly and in accordance with any State requirements)*

At surface 1260' FNL & 990' FWL, Unit "D"

At top proposed prod. zone (SAME)

14. DISTANCE IN MILES AND DIRECTION FROM NEAREST TOWN OR POST OFFICE*

Approximately 7 miles southeast of Artesia, NM

15. LEASE DESIGNATION AND SERIAL NO.
LC-069274

6. IF INDIAN, ALLOTTEE OR TRIBE NAME
NA

7. UNIT AGREEMENT NAME

8. FARM OR LEASE NAME, WELL NO.
Fred 6 Federal #5 22550

9. APT WELL NO.
30-015-30155

10. FIELD AND POOL, OR WILDCAT
Red Lake; Q-GB-SA 51341

11. SEC., T., R., M., OR BLOCK AND SURVEY OR AREA
Section 6-T18S-27E

12. COUNTY OR PARISH
Eddy County

13. STATE
New Mexico

15. DISTANCE FROM PROPOSED
LOCATION TO NEAREST

PROPERTY OR LEASE LINE, FT. 990'
(Also to nearest drlg. unit line if any)

16. NO. OF ACRES IN LEASE
159

17. NO. OF ACRES ASSIGNED
TO THIS WELL
40

18. DISTANCE FROM PROPOSED LOCATION*

TO NEAREST WELL, DRILLING, COMPLETED,
OR APPLIED FOR, ON THIS LEASE, FT. 850'

19. PROPOSED DEPTH
2800'

20. ROTARY OR CABLE TOOLS*
Rotary

21. ELEVATIONS (Show whether DF, RT, GR, etc.)

GR 3396'

22. APPROX. DATE WORK WILL START*
February 10, 1998

ROSWELL CONTROLLED WATER BASIN

23. PROPOSED CASING AND CEMENTING PROGRAM

SIZE OF HOLE	GRADE, SIZE OF CASING	WEIGHT PER FOOT	SETTING DEPTH	QUANTITY OF CEMENT
17 1/2"	14"	Conductor	40'	Redimix
12 1/4"	8 5/8", J-55	24 ppf	1150'	350 sx Lite + 200 sx Class C
7 7/8"	5 1/2", J-55	15.5 ppf	2800'	150 sx Lite + 350 sx Class C

* Cement will be circulated to surface on all casing strings.

Devon Energy plans to drill to 2800' +/- to test the San Andres Formation for commercial quantities of oil. If the San Andres is deemed non-commercial, the wellbore will be plugged and abandoned per Federal regulations. Programs to adhere to onshore oil and gas regulations are outlined in the following exhibits and attachments.

Drilling Program

Surface Use and Operating Plan

Exhibit #1 - Blowout Prevention Equipment/
Choke Manifold

Exhibit #2 - Location and Elevation Plat

Exhibit #3 - Planned Access Roads

Exhibit #4 - Wells Within a One Mile Radius

Exhibit #5 - Production Facilities Plan

Exhibit #6 - Rotary Rig Layout

Exhibit #7 - Casing Design Parameters and Factors

Exhibit #8 - H₂S Operating Plan

The undersigned accepts all applicable terms, conditions, stipulation, and restrictions concerning operations conducted on the leased land or portion thereof, as described above.

Bond Coverage: Nationwide
BLM Bond File No.: CO-1104

Post ID-1
3-20-98
APE & Loc

IN ABOVE SPACE DESCRIBE PROPOSED PROGRAM: If proposal is to deepen, give data on present productive zone and proposed new productive zone. If proposal is to drill or deepen directionally, give pertinent data on subsurface locations and measured and true vertical depths. Give blowout preventer program, if any.

24.

SIGNED

E. L. Buttross Jr.

TITLE

E. L. BUTTROSS, JR.
DISTRICT ENGINEER

DATE

12/18/97

*(This space for Federal or State office use)

PERMIT NO.

APPROVAL DATE

Application approval does not warrant or certify that the applicant holds legal or equitable title to those rights in the subject lease which would entitle the applicant to conduct operations thereon.

CONDITIONS OF APPROVAL, IF ANY:

APPROVED BY (ORIG. SGD.) ARMANDO A. LOPEZ

TITLE

Acting

ADM, MINERALS

DATE

MAR 06 1998

See Instructions On Reverse Side

RECEIVED

OFFICE OF THE
DIRECTOR OF LAND MANAGEMENT
BUREAU OF LAND MANAGEMENT

DEC 19 2 46 PM '46

RECEIVED

DISTRICT I
P.O. Box 1980, Hobbs, NM 88240

State of New Mexico
Energy, Minerals and Natural Resources Department

Form C-102
Revised February 10, 1994
Instruction on back
Submit to Appropriate District Office
State Lease - 4 Copies
Fee Lease - 3 Copies

DISTRICT II
P.O. Drawer DD, Artesia, NM 88210

OIL CONSERVATION DIVISION

DISTRICT III
1000 Rio Brazos Rd., Aztec, NM 87410

P.O. Box 2088
Santa Fe, New Mexico 87504-2088

☐ AMENDED REPORT

WELL LOCATION AND ACREAGE DEDICATION PLAT

API Number	Pool Code	Pool Name Red Lake (Q-GB-SA)
Property Code	Property Name FRED "6" FEDERAL	Well Number 5
OGRID No.	Operator Name DEVON ENERGY CORPORATION	Elevation 3396'

Surface Location

UL or lot No.	Section	Township	Range	Lot Idn	Feet from the	North/South line	Feet from the	East/West line	County
4	6	18 S	27 E		1260	NORTH	990	WEST	EDDY

Bottom Hole Location If Different From Surface

UL or lot No.	Section	Township	Range	Lot Idn	Feet from the	North/South line	Feet from the	East/West line	County

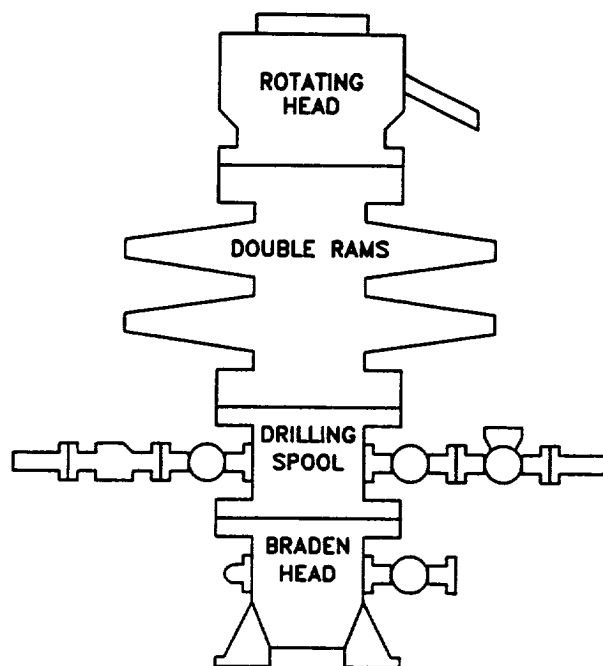
Dedicated Acres	Joint or Infill	Consolidation Code	Order No.

NO ALLOWABLE WILL BE ASSIGNED TO THIS COMPLETION UNTIL ALL INTERESTS HAVE BEEN CONSOLIDATED
OR A NON-STANDARD UNIT HAS BEEN APPROVED BY THE DIVISION

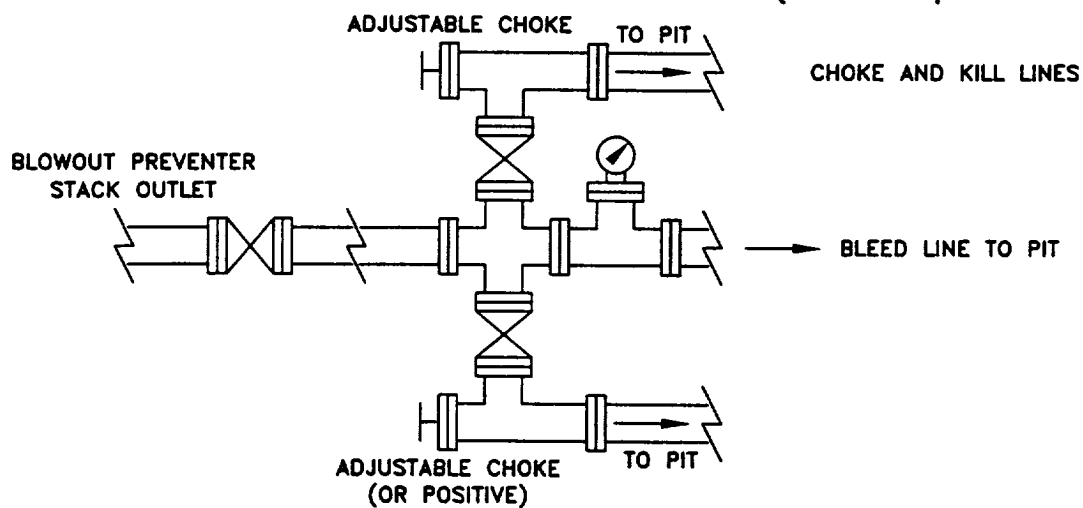
	LOT 3	LOT 2	LOT 1	<p>OPERATOR CERTIFICATION</p> <p>I hereby certify the the information contained herein is true and complete to the best of my knowledge and belief.</p> <p><u>E.L. Buttross Jr.</u> Signature</p> <p><u>E.L. Buttross, Jr.</u> Printed Name</p> <p><u>District Engineer</u> Title</p> <p><u>December 17, 1997</u> Date</p> <p>SURVEYOR CERTIFICATION</p> <p>I hereby certify that the well location shown on this plat was plotted from field notes of actual surveys made by me or under my supervision and that the same is true and correct to the best of my belief.</p> <p><u>November 03, 1997</u> Date Surveyed</p> <p><u>RAY L. JONES</u> Signature & Seal</p> <p><u>Professional Surveyor</u> Title</p> <p><u>No. 7576</u> Certificate No.</p> <p><u>7977</u> Basin Survey S</p>

Attachment to Exhibit #1
NOTES REGARDING BLOWOUT PREVENTORS
Fred 6 Federal #5
Eddy County, New Mexico

1. Drilling nipple will be constructed so it can be removed mechanically without the aid of a welder. The minimum internal diameter will equal BOP bore.
2. Wear ring will be properly installed in head.
3. Blowout preventor and all associated fittings will be in operable condition and tested to 1000 psi with the rig pump.
4. All fittings will be flanged.
5. A full bore safety valve with proper thread connections will be available on the rotary rig floor at all times.
6. All choke lines will be anchored to prevent movement.
7. All BOP equipment will be equal to or larger in bore than the internal diameter of the last casing string.
8. Will maintain a Kelly cock attached to the Kelly.
9. Hand wheels and wrenches will be properly installed and tested for safe operation.
10. All BOP equipment will meet API standards and include a minimum 40 gallon accumulator having two independent means of power to initiate closing operation.



CHOKE MANIFOLD REQUIREMENT (2000 psi WP)



devon

WEST RED LAKE

EDDY COUNTY, NEW MEXICO

SCHMATIC
BLOWOUT PREVENTOR

(2000 PSI MINIMUM WP)

WRLBOP

ES

11/97