

DISTRICT I  
P.O. Box 1980, Hobbs, NM 88240

State of New Mexico  
Energy, Minerals and Natural Resources Department

Form C-102  
Revised February 10, 1994  
Instruction on back  
Submit to Appropriate District Office  
State Lease - 4 Copies  
Fee Lease - 3 Copies

DISTRICT II  
P.O. Drawer DD, Artesia, NM 88210

OIL CONSERVATION DIVISION

DISTRICT III  
1000 Rio Brazos Rd., Aztec, NM 87410

P.O. Box 2088  
Santa Fe, New Mexico 87504-2088

☐ AMENDED REPORT

WELL LOCATION AND ACREAGE DEDICATION PLAT

API Number	Pool Code	Pool Name <i>TURKEY TRACK MORROW NORTH GAS</i>
Property Code	Property Name <i>EAST TURKEY TRACK FED. COM.</i>	Well Number <i>3</i>
OGRID No. <i>015445</i>	Operator Name <i>MYCO INDUSTRIES, INC.</i>	Elevation <i>3431</i>

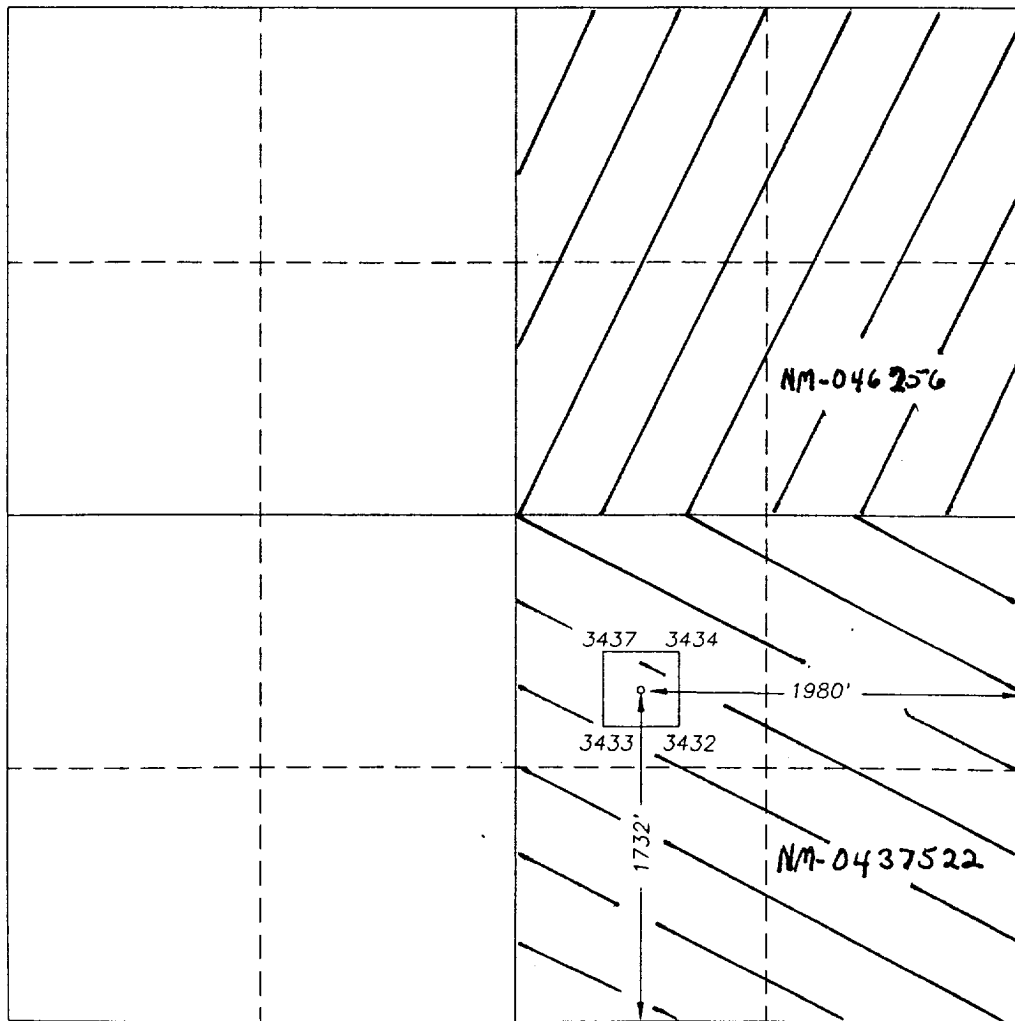
Surface Location

UL or lot No.	Section	Township	Range	Lot Idn	Feet from the	North/South line	Feet from the	East/West line	County
<i>J</i>	<i>26</i>	<i>18S</i>	<i>29E</i>		<i>1732</i>	<i>SOUTH</i>	<i>1980</i>	<i>EAST</i>	<i>EDDY</i>

Bottom Hole Location If Different From Surface

UL or lot No.	Section	Township	Range	Lot Idn	Feet from the	North/South line	Feet from the	East/West line	County
Dedicated Acres <i>320</i>	Joint or Infill	Consolidation Code	Order No.						

NO ALLOWABLE WILL BE ASSIGNED TO THIS COMPLETION UNTIL ALL INTERESTS HAVE BEEN CONSOLIDATED  
OR A NON-STANDARD UNIT HAS BEEN APPROVED BY THE DIVISION



OPERATOR CERTIFICATION

I hereby certify the the information  
contained herein is true and complete to the  
best of my knowledge and belief.

*Clifton R. May*  
Signature

Clifton R. May

Printed Name

Regulatory Agent

Title

April 15, 1998

Date

SURVEYOR CERTIFICATION

I hereby certify that the well location shown  
on this plat was plotted from field notes of  
actual surveys made by me or under my  
supervision, and that the same is true and  
correct to the best of my belief.

4/09/98

Date Surveyed

*Herschel L. Jones*  
Signature & Seal of  
Professional Surveyor

Certificate No. *Herschel L. Jones RLS 3640*  
*MYCO3* DISK 8  
GENERAL SURVEYING COMPANY