

District I  
PO Box 1980, Hobbs, NM 88241-1980  
  
District II  
PO Drawer DD, Artesia, NM 88211-0719  
  
District III  
1000 Rio Brazos Rd., Aztec, NM 87410  
  
District IV  
PO Box 2088, Santa Fe, NM 87504-2088

State of New Mexico  
Energy, Minerals & Natural Resources Department  
  
OIL CONSERVATION DIVISION  
PO Box 2088  
Santa Fe, NM 87504-2088

Form C-101  
Revised February 10, 1994  
Instructions on back  
Submit to Appropriate District Office  
State Lease - 6 Copies  
Fee Lease - 5 Copies

☐ AMENDED REPORT

APPLICATION FOR PERMIT TO DRILL, RE-ENTER, DEEPEN, PLUGBACK, OR ADD A ZONE

<sup>2</sup> Operator Name and Address. Devon Energy Corporation (Nevada) 1500 Mid America Tower 20 N. Broadway Oklahoma City, OK 73102-8260		<sup>1</sup> OGRID Number 6137
		<sup>3</sup> API Number 30-015- 30317
<sup>4</sup> Property Code 3502 <del>27470</del>	<sup>5</sup> Property Name STATE "BW" COMMOD - ARTESIA	<sup>6</sup> Well No. 2

<sup>7</sup> Surface Location

UL or lot no. G	Section 27	Township 18S	Range 28E	Lot Ids	Feet from the 2210	North/South line NORTH	Feet from the 2310	East/West line EAST	County EDDY
--------------------	---------------	-----------------	--------------	---------	-----------------------	---------------------------	-----------------------	------------------------	----------------

<sup>8</sup> Proposed Bottom Hole Location If Different From Surface

UL or lot no.	Section	Township	Range	Lot Ids	Feet from the	North/South line	Feet from the	East/West line	County
<sup>9</sup> Proposed Pool 1 Travis (Upper Penn)					<sup>10</sup> Proposed Pool 2				
59860									

<sup>11</sup> Work Type Code N	<sup>12</sup> Well Type Code O	<sup>13</sup> Cable/Rotary R	<sup>14</sup> Lease Type Code S	<sup>15</sup> Ground Level Elevation 3570.9'
<sup>16</sup> Multiple No	<sup>17</sup> Proposed Depth 10,000'	<sup>18</sup> Formation Upper Penn	<sup>19</sup> Contractor unknown at this time	<sup>20</sup> Spud Date July, 1998

<sup>21</sup> Proposed Casing and Cement Program

Hole Size	Casing Size	Casing weight/foot	Setting Depth	Sacks of Cement	Estimated TOC
17 1/2"	13 3/8"	48	425'	470	surface
12 1/4"	8 5/8"	24 & 32	2,800'	900	surface
7 7/8"	5 1/2"	15.5 & 17	10,000'	1650	2,400'

<sup>22</sup> Describe the proposed program. If this application is to DEEPEN or PLUG BACK give the data on the present productive zone and proposed new productive zone. Describe the blowout prevention program, if any. Use additional sheets if necessary.  
Devon Energy Corporation (Nevada) plans to drill this well to a total depth of 10,000 feet and complete it as an Upper Penn development well. If it is deemed non-commercial then it will be plugged and abandoned in accordance with the rules and regulations established by the New Mexico OCD or converted to salt water disposal after installing casing and obtaining the necessary disposal permits. Blowout prevention equipment will be installed while drilling the intermediate and production holes.

\*18 Hours woc 13 3/8", 8 5/8" casing. *BCD*

<sup>23</sup> I hereby certify that the information given above is true and complete to the best of my knowledge and belief.		OIL CONSERVATION DIVISION	
Signature: Candace R. Graham		Approved by: <i>Jim W. Luman</i> BSA	
Printed name: Candace R. Graham		Title: District Supervisor	
Title: Engineer Technician		Approval Date: 6-25-98 Expiration Date: 99	
Date: June 22, 1998	Phone: (405) 235-3611 X4520	Conditions of Approval: Attached *	

DISTRICT I  
P.O. Box 1980, Hobbs, NM 88240

DISTRICT II  
P.O. Drawer DD, Artesia, NM 88210

DISTRICT III  
1000 Rio Brazos Rd., Aztec, NM 87410

State of New Mexico  
Energy, Minerals and Natural Resources Depart

Form C-102  
Revised February 10, 1994  
Instruction on back  
Submit to Appropriate District Office  
State Lease - 4 Copies  
Fee Lease - 3 Copies

OIL CONSERVATION DIVISION

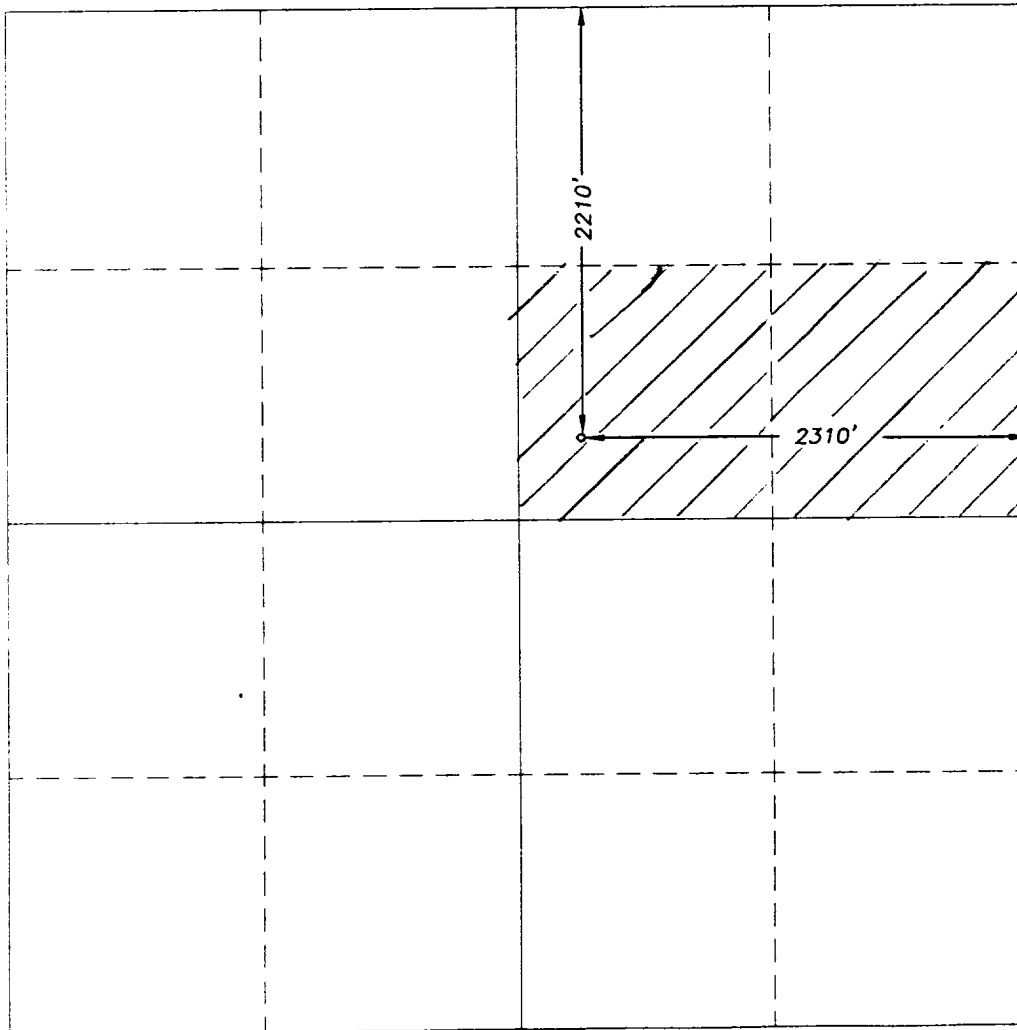
P.O. Box 2088  
Santa Fe, New Mexico 87504-2088

☐ AMENDED REPORT

WELL LOCATION AND ACREAGE DEDICATION PLAT

API Number		Pool Code		Pool Name TRAVIS (UPPER PENN)					
Property Code		Property Name STATE "BW" CDM						Well Number 2	
OGRID No. 6137		Operator Name DEVON ENERGY CORPORATION (NEVADA)						Elevation 3570.9	
Surface Location									
UL or lot No. G	Section 27	Township 18S	Range 28E	Lot Idn	Feet from the 2210	North/South line NORTH	Feet from the 2310	East/West line EAST	County EDDY
Bottom Hole Location If Different From Surface									
UL or lot No.	Section	Township	Range	Lot Idn	Feet from the	North/South line	Feet from the	East/West line	County
Dedicated Acres 80		Joint or Infill		Consolidation Code		Order No.			

NO ALLOWABLE WILL BE ASSIGNED TO THIS COMPLETION UNTIL ALL INTERESTS HAVE BEEN CONSOLIDATED  
OR A NON-STANDARD UNIT HAS BEEN APPROVED BY THE DIVISION



OPERATOR CERTIFICATION

I hereby certify the the information  
contained herein is true and complete to the  
best of my knowledge and belief.

*Candace R. Graham*  
Signature

Candace R. Graham  
Printed Name

Engineering Tech.  
Title

June 22, 1998  
Date

SURVEYOR CERTIFICATION

I hereby certify that the well location shown  
on this plat was plotted from field notes of  
actual surveys made by me or under my  
supervision, and that the same is true and  
correct to the best of my belief.

Date Surveyed

Signature & Seal of  
Professional Surveyor

3640

Certificate No. 3640 Jones RLS 3640

GENERAL SURVEYING COMPANY

DISTRICT II  
P.O. Drawer DD, Artesia, NM 88210

**DISTRICT III**  
1000 Rio Brazos Rd., Artec, NM 87410

## OIL CONSERVATION DIVISION

**P.O. Box 2088**

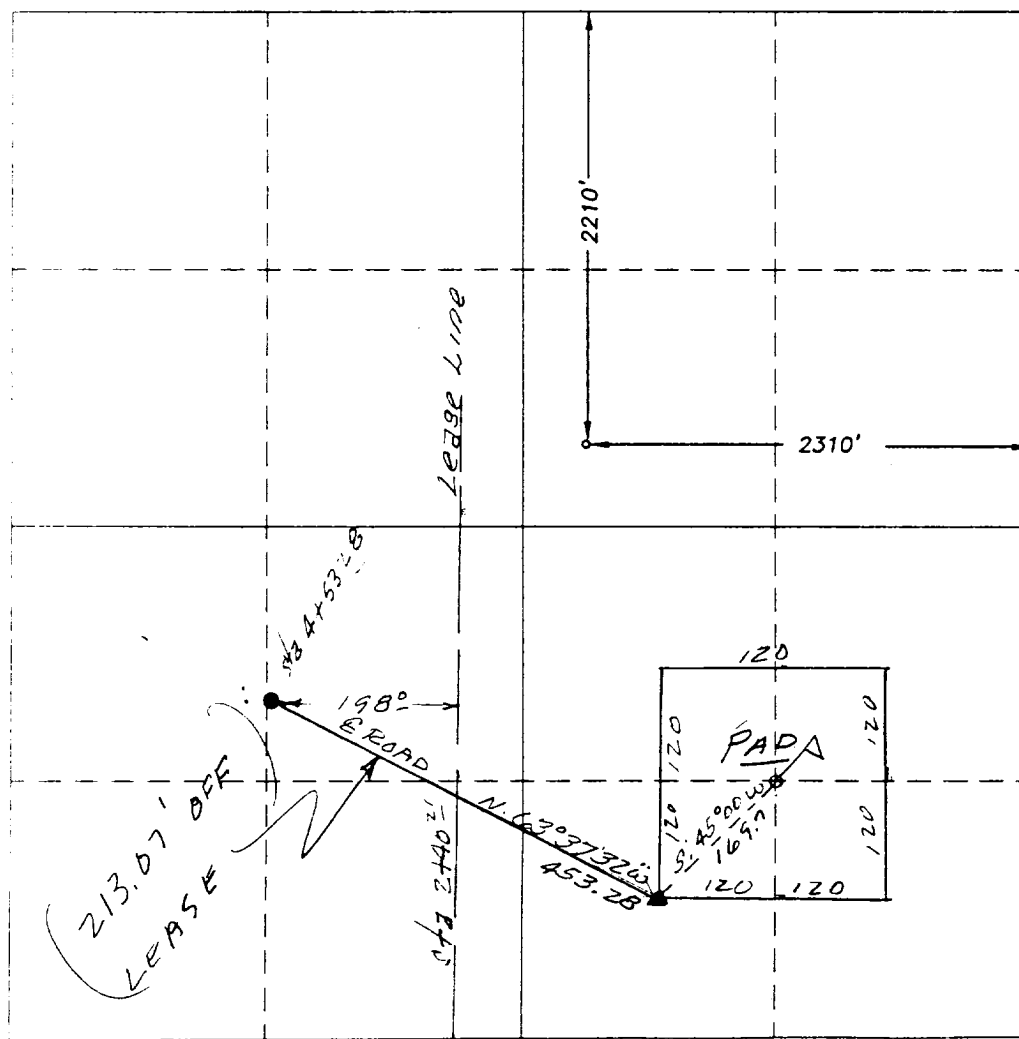
**Santa Fe, New Mexico 87504-2088**

☐ AMENDED REPORT

# WELL LOCATION AND ACREAGE DEDICATION PLAT

API Number		Pool Code		Pool Name					
Property Code		Property Name STATE "BW"						Well Number 2	
OGRID No.		Operator Name DEVON ENERGY CORPORATION						Elevation 3570.9	
Surface Location									
UL or lot No. G	Section 27	Township 18S	Range 28E	Lot Idn	Feet from the 2210	North/South line NORTH	Feet from the 2310	East/West line EAST	County EDDY
Bottom Hole Location If Different From Surface									
UL or lot No.	Section	Township	Range	Lot Idn	Feet from the	North/South line	Feet from the	East/West line	County
Dedicated Acres		Joint or Infill		Consolidation Code		Order No.			

NO ALLOWABLE WILL BE ASSIGNED TO THIS COMPLETION UNTIL ALL INTERESTS HAVE BEEN CONSOLIDATED  
OR A NON-STANDARD UNIT HAS BEEN APPROVED BY THE DIVISION



### OPERATOR CERTIFICATION

I hereby certify the the information  
contained herein is true and complete to the  
best of my knowledge and belief.

**Signature**

Printed Name \_\_\_\_\_

**Title**

Date \_\_\_\_\_

### SURVEYOR CERTIFICATION

I hereby certify that the well location shown on this plat was plotted from field notes of actual surveys made by me or under my supervision, and that the same is true and correct to the best of my belief.

6/16/98

Date Surveyed \_\_\_\_\_

Signature & Seal of  
Professional Surveyor

Certificate No. *Herschel L Jones* RLS 3640

GENERAL SURVEYING COMPANY