

District I  
PO Box 1980, Hobbs, NM 88241-1980

State of New Mexico  
Energy, Minerals & Natural Resources Department

Form C-101  
Revised February 10, 1994

District II

PO Drawer DD, Artesia, NM 88211-0719

OIL CONSERVATION DIVISION

PO Box 2088  
Santa Fe, NM 87504-2088

Instructions on back  
Submit to Appropriate District Office

State Lease-6 Copies

Fee Lease-5 Copies

District III

1000 Rio Brazos Rd., Aztec, NM 87410

District IV

PO Box 2088, Santa Fe, NM 87504-2088

AMENDED REPORT

APPLICATION FOR PERMIT TO DRILL, RE-ENTER, DEEPEN, PLUG BACK, OR ADD A ZONE

Operator Name and Address Harvey E. Yates Company P.O. Box 1933 Roswell, N.M. 88202		OGRID Number 10179
Property Code 12958		API Number 30-015-30380
Property Name LOCO HILLS WELCH		WELL NO. 3

Surface Location

UL or Lot no.	Section	Township	Range	Lot Idn	Feet from the	North/South line	Feet from the	East/West line	County
L	9	T-18S	R-29E		1650	SOUTH	660	WEST	EDDY

Proposed Bottom Hole Location If Different From Surface

UL or Lot no.	Section	Township	Range	Lot Idn	Feet from the	North/South line	Feet from the	East/West line	County
Proposed Pool 1 EMPIRE SOUTH MORROW					Proposed Pool 2 76400				

Work Type Code N Multiple	Well Type Code G Proposed Depth	Cable/Rotary ROTARY Formation	Lease Type Code S Contractor	Ground Level Elevation 3491 Spud Date
N	11,250	MISSISSIPPIAN	PETERSON DRILLING	15-Sep-98

Proposed Casing and Cement Program

Hole Size	Casing Size	Casing weight/foot	Setting Depth	Sacks of Cement	Estimated TOC
17 1/2"	13 3/8"	48#	400'	425	CIRC. TO SURFACE
12 1/4"	8 5/8"	32#	3,100'	1200	CIRC. TO SURFACE
7 7/8"	5 1/2"	17#	11250	1200	600' ABOVE PAY

Describe the proposed program. If this application is to DEEPEN or PLUG BACK give the data on the present productive zone and proposed new productive zone. Describe the blowout prevention program if any. Use additional sheets if necessary.

MUD PROGRAM

DEPTH TYPE OF MUD

0-400 FRESH WATER w/ PAPER & SHALE GUARD.  
4,00-3,100 BRINE WATER w/ PAPER & SHALE GUARD.  
3,100-8,000 FRESH WATER w/ PAPER, SHALE GUARD, N03, 18-20,000 CHLORIDES, & SWEEPS AS NEEDED.  
8,000-11,250 MUD UP WITH DRISPAC & BENTONITE GEL PRIOR TO WOLFCAMP

PRESSURE CONTROL EQUIPMENT

BOP w/ ANNULAR. ALTHOUGH THE RIG EQUIPMENT IS RATED 3M, THIS WELL WILL BE RATED 2M.  
UPPER AND LOWER KELLY COCK. ROTATING HEAD PRIOR TO DRILLING 8 5/8" SHOE

OTHER

THIS IS A POSSIBLE H2S AREA. AN H2S COMPLIANCE PACKAGE WILL BE UTILIZED.

I hereby certify that the information given above is true and complete to the best of my knowledge and belief.

Signature

Bob Williams

Printed name:

Bob Williams

Title:

Drilling Superintendent

Date:

7/22/98

Phone:

505-623-6601

OIL CONSERVATION DIVISION

Approved by

Title:

Approval Date:

Jim W. Smith  
District Supervisor

8-26-98

Expiration Date:

8-26-99

Conditions of Approval:

Attached

DISTRICT I  
P.O. Box 1980, Hobbs, NM 88241-1980

DISTRICT II  
P.O. Drawer DD, Artesia, NM 88211-0719

DISTRICT III  
1000 Rio Brazos Rd., Aztec, NM 87410

DISTRICT IV  
P.O. BOX 2088, SANTA FE, N.M. 87504-2088

State of New Mexico  
Energy, Minerals and Natural Resources Department

Form C-102  
Revised February 10, 1994  
Submit to Appropriate District Office  
State Lease - 4 Copies  
Fee Lease - 3 Copies

OIL CONSERVATION DIVISION

P.O. Box 2088  
Santa Fe, New Mexico 87504-2088

☐ AMENDED REPORT

WELL LOCATION AND ACREAGE DEDICATION PLAT

API Number	Pool Code	Pool Name
		Empire South Morrow
Property Code	Property Name	Well Number
	LOCO HILLS WELCH	3
OGRID No.	Operator Name	Elevation
010179	HARVEY E. YATES COMPANY	3491

Surface Location

UL or lot No.	Section	Township	Range	Lot Idn	Feet from the	North/South line	Feet from the	East/West line	County
L	9	18 S	29 E		1650	SOUTH	660	WEST	EDDY

Bottom Hole Location If Different From Surface

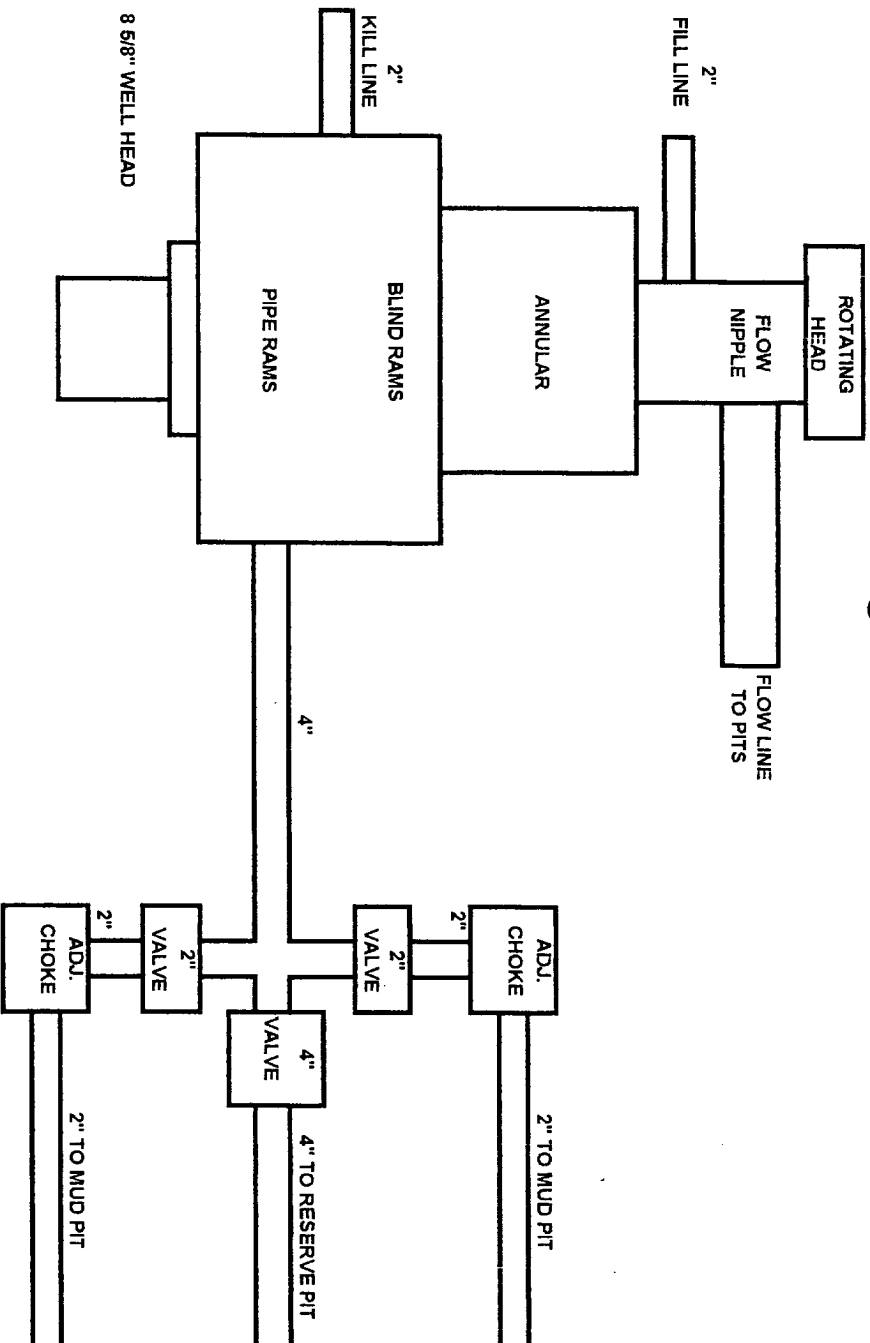
UL or lot No.	Section	Township	Range	Lot Idn	Feet from the	North/South line	Feet from the	East/West line	County
Dedicated Acres	Joint or Infill	Consolidation Code	Order No.						
320									

NO ALLOWABLE WILL BE ASSIGNED TO THIS COMPLETION UNTIL ALL INTERESTS HAVE BEEN CONSOLIDATED  
OR A NON-STANDARD UNIT HAS BEEN APPROVED BY THE DIVISION

		<b>OPERATOR CERTIFICATION</b>  I hereby certify the the information contained herein is true and complete to the best of my knowledge and belief.  <u>Bob Williams</u> Signature  Bob Williams Printed Name  Drilling Superintendent Title  7/29/98 Date	
		<b>SURVEYOR CERTIFICATION</b>  I hereby certify that the well location shown on this plat was plotted from field notes of actual surveys made by me or under my supervision and that the same is true and correct to the best of my belief.  JULY 21, 1998 Date Surveyed  Signature of Professional Surveyor  RONALD J. EIDSON Professional Surveyor 3239 98-11-1056 Certificate No. RONALD J. EIDSON 3239 GARY EIDSON 12641 MAGNUS EIDSON 12185	

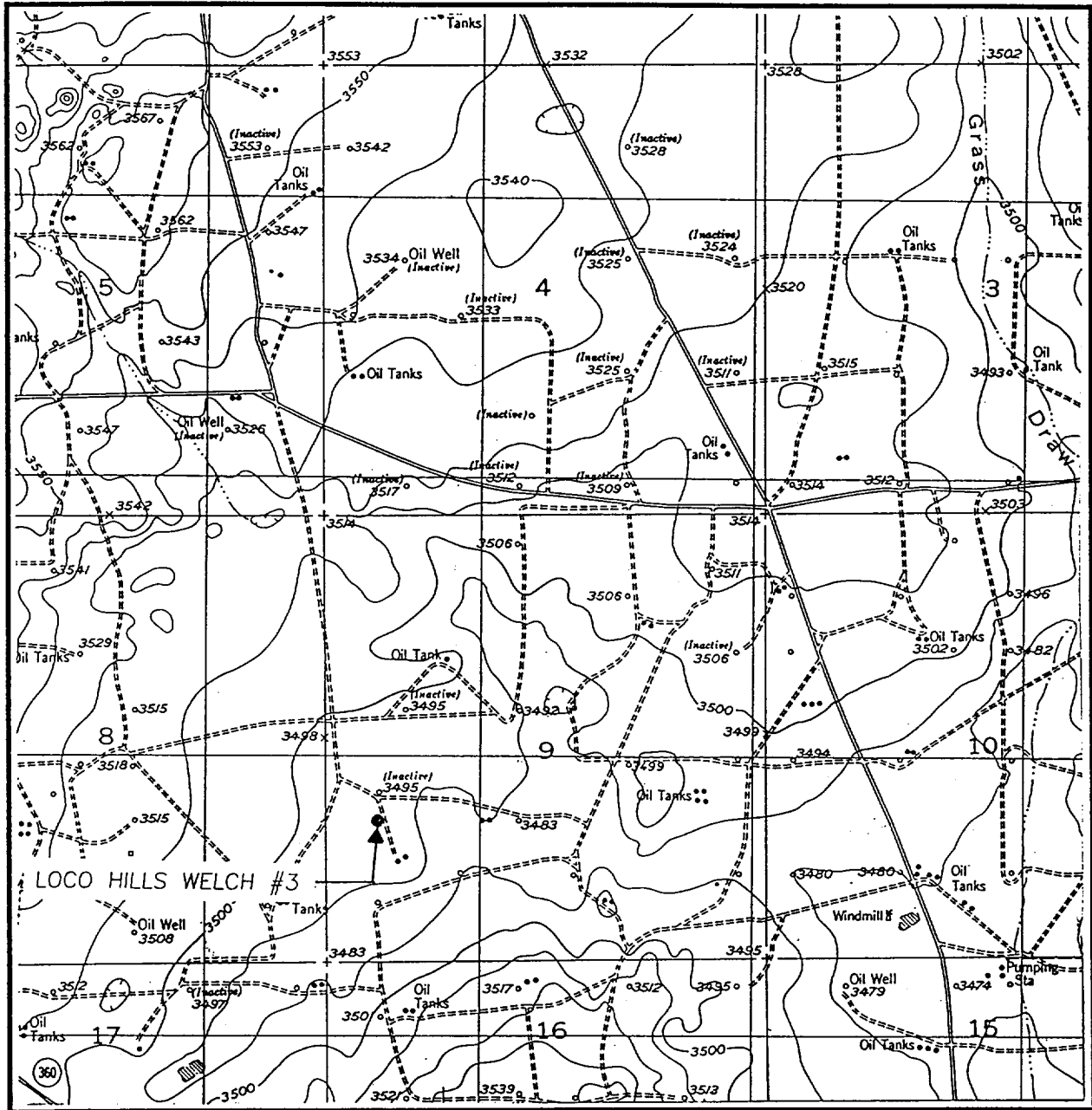
LOCO HILLS WELCH #3  
1,650' FSL & 660' FWL  
SEC 9, T18S, R29E  
EDDY COUNTY, NM

EXHIBIT C BOP STACK  
1500 SERIES  
RATED @ 5,000 PSI



**(505) 393-3117**

# LOCATION VERIFICATION MAP



SCALE: 1" = 2000'

CONTOUR INTERVAL:  
RED LAKE SE - 10'

SEC. 9 TWP. 18-S RGE. 29-E

SURVEY N.M.P.M.

COUNTY EDDY

DESCRIPTION 1650' FSL & 660' FWL

ELEVATION 3491

OPERATOR HARVEY E. YATES COMPANY

LEASE LOCO HILLS WELCH

U.S.G.S. TOPOGRAPHIC MAP

RED LAKE SE, N.M.

**JOHN WEST ENGINEERING**  
**HOBBS, NEW MEXICO**

**(505) 393-3117**