

District I
PO Box 1980, Hobbs, NM 88241-1980

District II
811 South First, Artesia, NM 88210

District III
1000 Rio Brazos Rd., Aztec, NM 87410

District IV
2040 South Pancheco, Santa Fe, NM 87505

State of New Mexico
Energy, Minerals & Natural Resources Department

OIL CONSERVATION DIVISION
2040 South Pancheco
Santa Fe, NM 87505

Form C-101
Revised February 10, 1994
Instructions on back
Submit to Appropriate District Office
State Lease - 6 Copies
Fee Lease - 5 Copies

AMENDED REPORT

APPLICATION FOR PERMIT TO DRILL, RE-ENTER, DEEPEN, PLUGBACK, OR ADD A ZONE

² Operator Name and Address. Devon Energy Corporation (Nevada) 1500 Mid America Tower 20 N. Broadway Oklahoma City, OK 73102-8260		¹ OGRID Number 6137
		³ API Number 30-015- 30389
⁴ Property Code 23639	⁵ Property Name LOGAN 2 STATE	⁶ Well No. 1

⁷ Surface Location

UL or lot no. 3	Section 2	Township 18S	Range 27E	Lot Ids	Feet from the 380	North/South line North	Feet from the 1750	East/West line West	County Eddy
--------------------	--------------	-----------------	--------------	---------	----------------------	---------------------------	-----------------------	------------------------	----------------

⁸ Proposed Bottom Hole Location If Different From Surface

UL or lot no.	Section	Township	Range	Lot Ids	Feet from the	North/South line	Feet from the	East/West line	County
---------------	---------	----------	-------	---------	---------------	------------------	---------------	----------------	--------

⁹ Proposed Pool 1 Red Lake (Q-GB-SA) 51300	¹⁰ Proposed Pool 2
---	-------------------------------

¹¹ Work Type Code N	¹² Well Type Code O	¹³ Cable/Rotary Rotery	¹⁴ Lease Type Code S	¹⁵ Ground Level Elevation 3599'
¹⁶ Multiple No	¹⁷ Proposed Depth 3400'	¹⁸ Formation San Andres	¹⁹ Contractor Unknown	²⁰ Spud Date November 1, 1998

²¹ Proposed Casing and Cement Program

Hole Size	Casing Size	Casing weight/foot	Setting Depth	Sacks of Cement	Estimated TOC
17 1/2"	14"	Conductor	40'	Readymix	surface
12 1/4"	8 5/8", J-55	24 ppf	1150'	350 lite, 200 "C"	surface
7 7/8"	5 1/2", J-55	15.5 ppf	3400'	250 lite, 350 "C"	surface
18 Holes WOC on 8 5/8" casing					

²² Describe the proposed program. If this application is to DEEPEN or PLUG BACK give the data on the present productive zone and proposed new productive zone. Describe the blowout prevention program, if any. Use additional sheets if necessary.

Devon Energy Corporation plans to drill this well to a total depth of +/- 3400' and complete it as an oil well. If the well is deemed non-commercial, then it will be plugged and abandoned in accordance with the rules established by the OCD of New Mexico. BOP's will be installed while drilling the production hole.

Post ID-1
9-4-98
API & Loc

Notify N.M.O.C.C. in sufficient
time to witness cementing
the 8 5/8" casing

²³ I hereby certify that the information given above is true and complete to the best of my knowledge and belief.		OIL CONSERVATION DIVISION	
Signature: <i>E. L. Buttross Jr.</i>		Approved by: ORIGINAL SIGNED BY TIM W. GUM 36A	
Printed name: E. L. Buttross Jr.		Title: DISTRICT II SUPERVISOR	
Title: District Engineer		Approval Date: 8-31-98	Expiration Date: 8-31-99
Date: 8/28/98	Phone: (405)235-3611 x 4509	Conditions of Approval:	
		Attached	

DECLASSIFICATION AUTHORITY

DISTRICT I
P.O. Box 1980, Hobbs, NM 88240

State of New Mexico

Energy, Minerals and Natural Resources Department

EXHIBIT # 2

Form C-102

Revised February 10, 1994

Instruction on back

Submit to Appropriate District Office

State Lease - 4 Copies

Fee Lease - 3 Copies

DISTRICT II
P.O. Drawer DD, Artesia, NM 88210

OIL CONSERVATION DIVISION

P.O. Box 2088

Santa Fe, New Mexico 87504-2088

DISTRICT III
1000 Rio Brazos Rd., Artec, NM 87410

☐ AMENDED REPORT

WELL LOCATION AND ACREAGE DEDICATION PLAT

API Number	Pool Code 51300	Pool Name Red Lake (Q-GB-SA)
Property Code	Property Name LOGAN "2" STATE	Well Number 1
OGRID No. 6137	Operator Name DEVON ENERGY CORPORATION	Elevation 3599'

Surface Location

UL or lot No.	Section	Township	Range	Lot Idn	Feet from the	North/South line	Feet from the	East/West line	County
3	2	18 S	27 E		380	NORTH	1750	WEST	EDDY

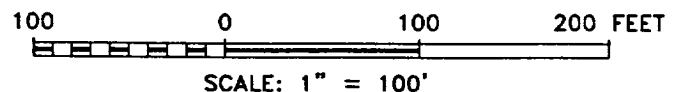
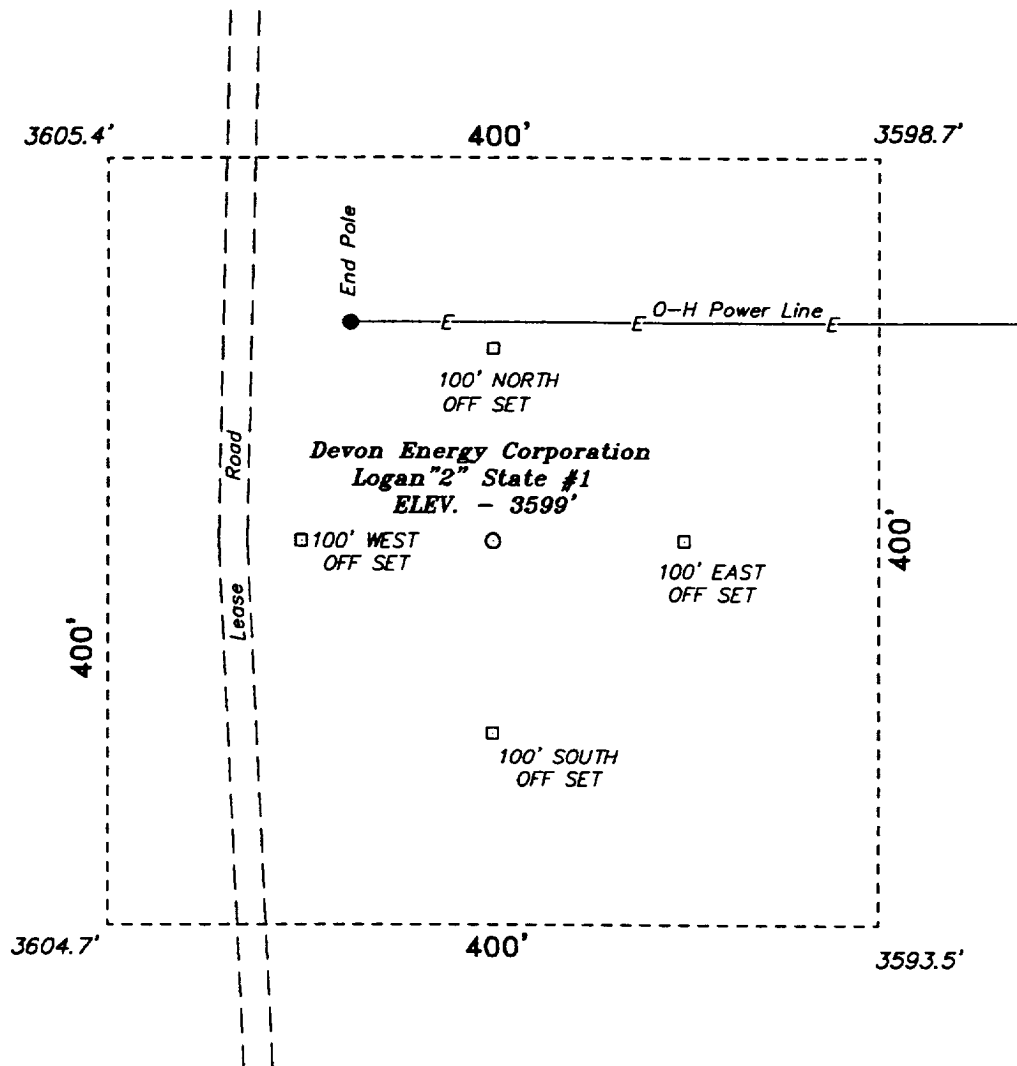
Bottom Hole Location If Different From Surface

UL or lot No.	Section	Township	Range	Lot Idn	Feet from the	North/South line	Feet from the	East/West line	County
Dedicated Acres	Joint or Infill	Consolidation Code	Order No.						

NO ALLOWABLE WILL BE ASSIGNED TO THIS COMPLETION UNTIL ALL INTERESTS HAVE BEEN CONSOLIDATED
OR A NON-STANDARD UNIT HAS BEEN APPROVED BY THE DIVISION

				OPERATOR CERTIFICATION I hereby certify the the information contained herein is true and complete to the best of my knowledge and belief. <u>E. L. Buttross Jr.</u> Signature E. L. Buttross, Jr. Printed Name District Engineer Title 8/28/98 Date	
SURVEYOR CERTIFICATION I hereby certify that the well location shown on this plat was plotted from field notes of actual surveys made by me or under my supervision, and that the same is true and correct to the best of my belief. August 12, 1998 Date Surveyed Signature & Seal of Professional Surveyor Certificate No. 18297W BASIN SURVEYS					

SECTION 2, TOWNSHIP 18 SOUTH, RANGE 27 EAST, N.M.P.M.,
EDDY COUNTY, NEW MEXICO.



Devon Energy Corporation

REF: Logan "2" State No. 1 / Well Pad Topo

THE LOGAN "2" STATE No. 1 LOCATED 380' FROM THE
NORTH LINE AND 1750' FROM THE WEST LINE OF
SECTION 2, TOWNSHIP 18 SOUTH, RANGE 27 EAST,
N.M.P.M., EDDY COUNTY, NEW MEXICO.

BASIN SURVEYS P.O. BOX 1786 - HOBBS, NEW MEXICO

W.O. Number: 8297

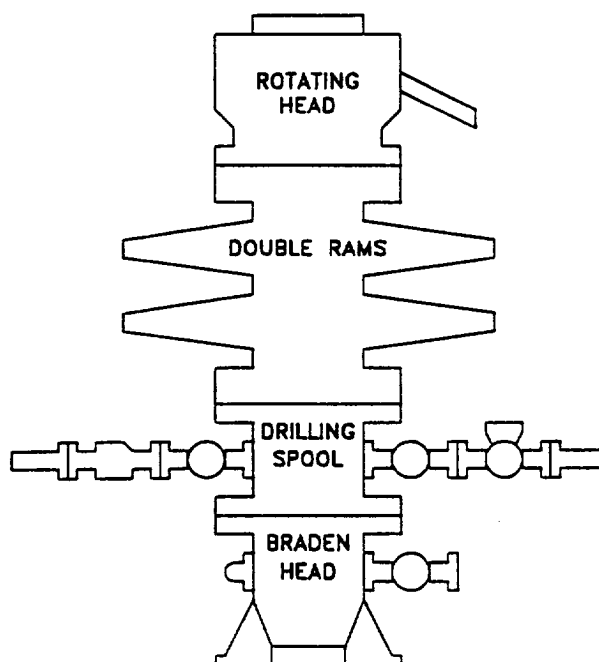
Drawn By: K. GOAD

Date: 08-14-98

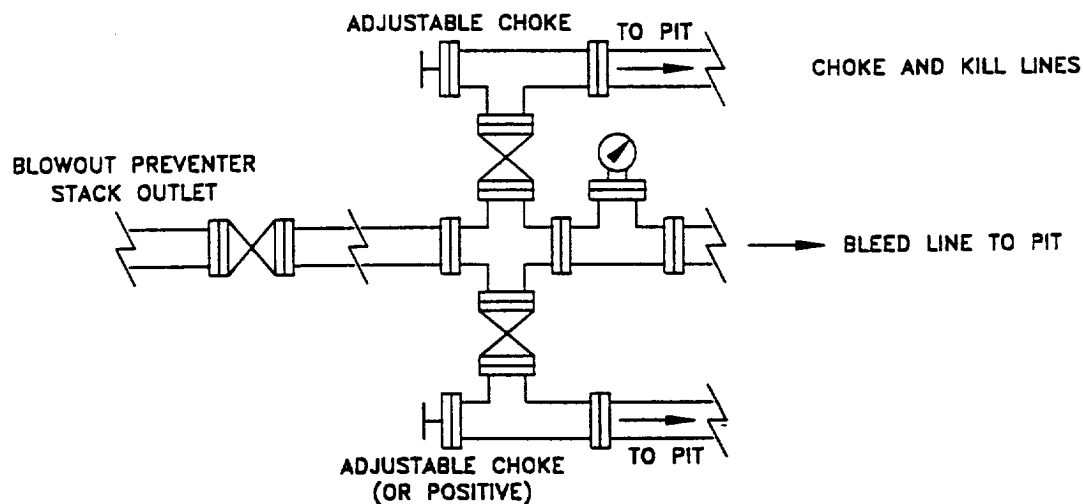
Disk: KJG #116 - 8297V.DWG

Survey Date: 08-12-98

Sheet 1 of 1 Sheets



CHOKE MANIFOLD REQUIREMENT (2000 psi WP)



devon

WEST RED LAKE AREA
EDDY COUNTY, NEW MEXICO

SCHEMATIC
BLOWOUT PREVENTOR
(2000 PSI MINIMUM WP)

Q:\... \PROJECTS \EXPANDED
WRI BOP

CS

8/98