

UNITED STATES N. M. OFFICE
DEPARTMENT OF THE INTERIOR
BUREAU OF LAND MANAGEMENT
ARTESIA, NM 86210-2834

Form approved.

178/644

APPLICATION FOR PERMIT TO DRILL OR DEEPEN

1a. TYPE OF WORK: DRILL ☒ DEEPEN ☐

b. TYPE OF WELL:

OIL WELL ☒ GAS WELL ☐ Other ☐ SINGLE ZONE ☐ MULTIPLE ZONE ☐

2. NAME OF OPERATOR

DEVON ENERGY CORPORATION (NEVADA) 6137

3. ADDRESS AND TELEPHONE NO.

20 N. BROADWAY, SUITE 1500, OKC, OK 73102 (405) 552-4511

4. LOCATION OF WELL (Report location clearly and in accordance with any State requirements)*

At surface 934' FSL & 2291' FEL, Lot "19"

At top proposed prod. zone (SAME)

14. DISTANCE IN MILES AND DIRECTION FROM NEAREST TOWN OR POST OFFICE*

Approximately 7 miles southeast of Artesia, NM

5. LEASE DESIGNATION AND SERIAL NO.
LC-061783-A

6. IF INDIAN, ALLOTTEE OR TRIBE NAME
NA

7. UNIT AGREEMENT NAME

8. FARM OR LEASE NAME, WELL NO.
Windfohr 4 Federal #5 23718

9. API WELL NO.
30-015-30415

10. FIELD AND POOL, OR WILDCAT
Red Lake; Q-GB-SA 51300

11. SEC., T., R., M., OR BLOCK AND SURVEY OR AREA
Section 4-T18S-27E

12. COUNTY OR PARISH
Eddy County

13. STATE
New Mexico

15. DISTANCE FROM PROPOSED

LOCATION TO NEAREST
PROPERTY OR LEASE LINE, FT. 934'
(Also to nearest drlg. unit line if any)

16. NO. OF ACRES IN LEASE

160

17. NO. OF ACRES ASSIGNED

TO THIS WELL
40

18. DISTANCE FROM PROPOSED LOCATION*

TO NEAREST WELL, DRILLING, COMPLETED,
OR APPLIED FOR, ON THIS LEASE, FT. 650'

19. PROPOSED DEPTH

3400'

20. ROTARY OR CABLE TOOLS*

Rotary

21. ELEVATIONS (Show whether DF, RT, GR, etc.)

GR 3569'

22. APPROX. DATE WORK WILL START*

November 1, 1998

23. PROPOSED CASING AND CEMENTING PROGRAM

| SIZE OF HOLE | GRADE, SIZE OF CASING | WEIGHT PER FOOT | SETTING DEPTH | QUANTITY OF CEMENT |
|--------------|-----------------------|-----------------|---------------|------------------------------|
| 17 1/2" | 14" | Conductor | 40' | Redimix |
| 12 1/4" | 8 5/8", J-55 | 24 ppf | 1150' | 350 sx Lite + 200 sx Class C |
| 7 7/8" | 5 1/2", J-55 | 15.5 ppf | 3400' | 250 sx Lite + 350 sx Class C |

* Cement will be circulated to surface on all casing strings.

Devon Energy plans to drill to 3400' +/- to test the San Andres Formation for commercial quantities of oil. If the San Andres is deemed non-commercial, the wellbore will be plugged and abandoned per Federal regulations. Programs to adhere to onshore oil and gas regulations are outlined in the following exhibits and attachments.

Drilling Program

Surface Use and Operating Plan

Exhibit #1 - Blowout Prevention Equipment/
Choke Manifold

Exhibit #2 - Location and Elevation Plat

Exhibit #3 - Planned Access Roads

Exhibit #4 - Wells Within a One Mile Radius

Exhibit #5 - Production Facilities Plan

Exhibit #6 - Rotary Rig Layout

Exhibit #7 - Casing Design Parameters and Factors

Exhibit #8 - H₂S Operating Plan

The undersigned accepts all applicable terms, conditions, stipulation, and restrictions concerning operations conducted on the leased land or portion thereof, as described above.

Bond Coverage: Nationwide

BLM Bond File No.: CO-1104

Post FD-1
10-2-98
API + LOC

IN ABOVE SPACE DESCRIBE PROPOSED PROGRAM: If proposal is to deepen, give data on present productive zone and proposed new productive zone. If proposal is to drill or deepen directionally, give pertinent data on subsurface locations and measured and true vertical depths. Give blowout preventer program, if any.

24.

SIGNED

E. L. Buttross, Jr.

TITLE

E. L. BUTTROSS, JR.
DISTRICT ENGINEER

DATE

8/25/98

*(This space for Federal or State office use)

PERMIT NO.

APPROVAL DATE

Application approval does not warrant or certify that the applicant holds legal or equitable title to those rights in the subject lease which would entitle the applicant to conduct operations thereon.

CONDITIONS OF APPROVAL, IF ANY:

(ORIG. SGD.) ARMANDO A. LOPEZ

Acting Assistant Field Office Manager,
Lands and Minerals

APPROVED BY

TITLE

DATE

SEP 24 1998

See Instructions On Reverse Side

DISTRICT I
P.O. Box 1980, Hobbs, NM 88240

DISTRICT II
P.O. Drawer DD, Artesia, NM 88210

DISTRICT III
1000 Rio Brazos Rd., Aztec, NM 87410

State of New Mexico
Energy, Minerals and Natural Resources Department

EXHIBIT # 2

Form C-102
Revised February 10, 1994
Instruction on back
Submit to Appropriate District Office
State Lease - 4 Copies
Fee Lease - 3 Copies

OIL CONSERVATION DIVISION

P.O. Box 2088
Santa Fe, New Mexico 87504-2088

☐ AMENDED REPORT

WELL LOCATION AND ACREAGE DEDICATION PLAT

| | | |
|-------------------|---|---------------------------------|
| API Number | Pool Code 51300 | Pool Name Red Lake (Q-GB-SA) |
| Property Code | Property Name WINDFOHR "4" FEDERAL | Well Number 5 |
| OGRID No. 6137 | Operator Name DEVON ENERGY CORPORATION | Elevation 3569' |

Surface Location

| | | | | | | | | | |
|---------------|---------|----------|-------|---------|---------------|------------------|---------------|----------------|--------|
| UL or lot No. | Section | Township | Range | Lot Idn | Feet from the | North/South line | Feet from the | East/West line | County |
| LOT 19 | 4 | 18 S | 27 E | | 934 | SOUTH | 2291 | EAST | EDDY |

Bottom Hole Location If Different From Surface

| | | | | | | | | | |
|-----------------|-----------------|--------------------|-----------|---------|---------------|------------------|---------------|----------------|--------|
| UL or lot No. | Section | Township | Range | Lot Idn | Feet from the | North/South line | Feet from the | East/West line | County |
| | | | | | | | | | |
| Dedicated Acres | Joint or Infill | Consolidation Code | Order No. | | | | | | |

NO ALLOWABLE WILL BE ASSIGNED TO THIS COMPLETION UNTIL ALL INTERESTS HAVE BEEN CONSOLIDATED
OR A NON-STANDARD UNIT HAS BEEN APPROVED BY THE DIVISION

| | | | | | | | | | | | | | | | |
|---------------|--|--|--|---------------|--|--|--|---------------|--|--|--|---------------|--|--|--|
| <p>LOT 8</p> | | | | <p>LOT 7</p> | | | | <p>LOT 6</p> | | | | <p>LOT 5</p> | | | |
| <p>LOT 9</p> | | | | <p>LOT 10</p> | | | | <p>LOT 11</p> | | | | <p>LOT 12</p> | | | |
| <p>LOT 16</p> | | | | <p>LOT 15</p> | | | | <p>LOT 14</p> | | | | <p>LOT 13</p> | | | |
| <p>LOT 17</p> | | | | <p>LOT 18</p> | | | | <p>LOT 19</p> | | | | <p>LOT 20</p> | | | |

OPERATOR CERTIFICATION

I hereby certify the the information contained herein is true and complete to the best of my knowledge and belief.

E.L. Buttross Jr.
Signature

E.L. Buttross, Jr.
Printed Name

District Engineer
Title

8/26/98
Date

SURVEYOR CERTIFICATION

I hereby certify that the well location shown on this plat was plotted from field notes of actual surveys made by me or under my supervision and that the same is true and correct to the best of my belief.

August 11, 1998

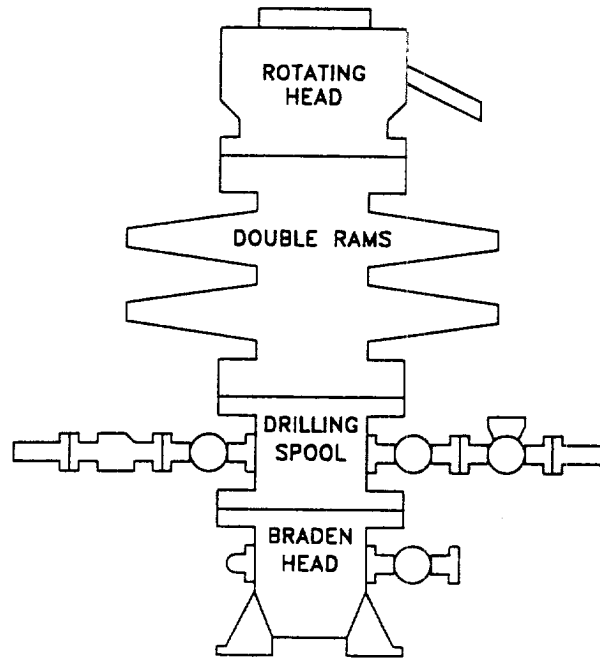
Date Surveyed

Signature [Signature]
Professional Surveyor

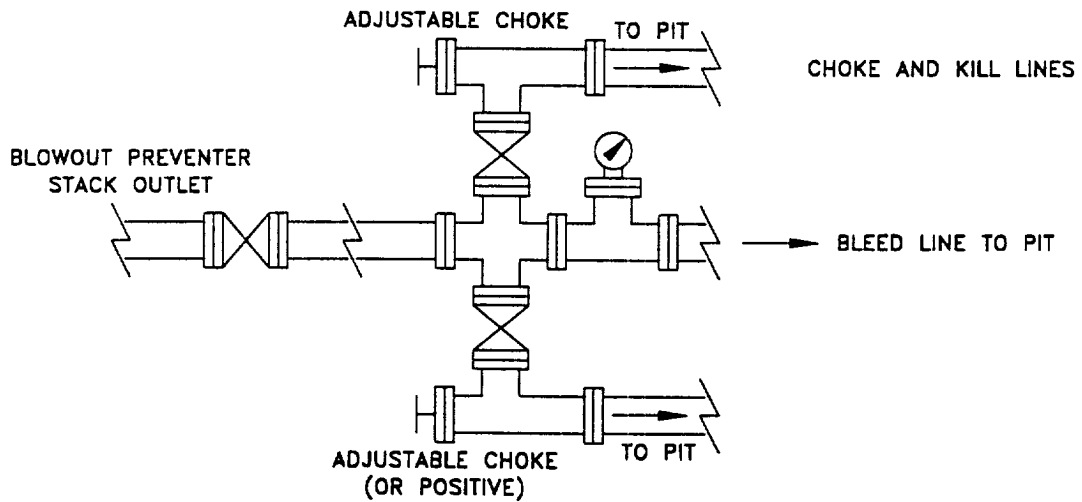
W.D. 1967 82979
Certificate No. Gary L. Jones 7977

NEW MEXICO
BASIC SURVEY

3573.0' 3573.9' 3575.6' 3565.2' 934' 2291'



CHOKE MANIFOLD REQUIREMENT (2000 psi WP)



devon

WEST RED LAKE AREA

EDDY COUNTY, NEW MEXICO

SCHMATIC
BLOWOUT PREVENTOR

(2000 PSI MINIMUM WP)

Q:\PROJECTS\EXPANDED

WRLBOP

Attachment to Exhibit #1
NOTES REGARDING BLOWOUT PREVENTORS
Windfohr 4 Federal #5
Eddy County, New Mexico

1. Drilling nipple will be constructed so it can be removed mechanically without the aid of a welder. The minimum internal diameter will equal BOP bore.
2. Wear ring will be properly installed in head.
3. Blowout preventor and all associated fittings will be in operable condition and tested to 1000 psi with the rig pump.
4. All fittings will be flanged.
5. A full bore safety valve with proper thread connections will be available on the rotary rig floor at all times.
6. All choke lines will be anchored to prevent movement.
7. All BOP equipment will be equal to or larger in bore than the internal diameter of the last casing string.
8. Will maintain a Kelly cock attached to the Kelly.
9. Hand wheels and wrenches will be properly installed and tested for safe operation.
10. All BOP equipment will meet API standards and include a minimum 40 gallon accumulator having two independent means of power to initiate closing operation.