

UNITED STATES
DEPARTMENT OF THE INTERIOR
BUREAU OF LAND MANAGEMENT
N.M. Oil & Gas Division
ARTESIA, NM 86210-2838

Form approved.

APPLICATION FOR PERMIT TO DRILL OR DEEPEN

1a. TYPE OF WORK: DRILL ☒ DEEPEN ☐

b. TYPE OF WELL: OIL WELL ☒ GAS WELL ☐ Other ☐ SINGLE ZONE ☐ MULTIPLE ZONE ☐

2. NAME OF OPERATOR: DEVON ENERGY CORPORATION (NEVADA) 6137

3. ADDRESS AND TELEPHONE NO.: 20 N. BROADWAY, SUITE 1500, OKC, OK 73102 (405) 552-4511

4. LOCATION OF WELL (Report location clearly and in accordance with any State requirements)*
At surface 1650' FSL & 2200' FEL, Lot "14"
At top proposed prod. zone (SAME) Unick

14. DISTANCE IN MILES AND DIRECTION FROM NEAREST TOWN OR POST OFFICE*
Approximately 7 miles southeast of Artesia, NM

15. DISTANCE FROM PROPOSED LOCATION TO NEAREST PROPERTY OR LEASE LINE, FT. 1650'
(Also to nearest drlg. unit line if any)

16. NO. OF ACRES IN LEASE 160

17. NO. OF ACRES ASSIGNED TO THIS WELL 40

18. DISTANCE FROM PROPOSED LOCATION* TO NEAREST WELL, DRILLING, COMPLETED, OR APPLIED FOR, ON THIS LEASE, FT. 650'

19. PROPOSED DEPTH 3400'

20. ROTARY OR CABLE TOOLS* Rotary

21. ELEVATIONS (Show whether DF, RT, GR, etc.) GR 3586'

22. APPROX. DATE WORK WILL START* November 1, 1998

5. LEASE DESIGNATION AND SERIAL NO. LC-061783-A

6. IF INDIAN, ALLOTTEE OR TRIBE NAME NA

7. UNIT AGREEMENT NAME

8. FARM OR LEASE NAME, WELL NO. Windfohr 4 Federal #4 23718

9. API WELL NO. 30-015- 30474

10. FIELD AND POOL, OR WILDCAT Red Lake; Q-GB-SA 51300

11. SEC., T., R., M., OR BLOCK AND SURVEY OR AREA Section 4-T18S-27E

12. COUNTY OR PARISH Eddy County

13. STATE New Mexico

PROPOSED CASING AND CEMENT SCHEDULE FOR REDWELL CONTROLLED WATER RACIN				
SIZE OF HOLE	GRADE, SIZE OF CASING	WEIGHT PER FOOT	SETTING DEPTH	QUANTITY OF CEMENT
17 1/2"	14"	Conductor	40'	Redimix
12 1/4"	8 5/8", J-55	24 ppf	1150'	Redimix
7 7/8"	5 1/2", J-55	15.5 ppf	3400'	250 sx Lite + 350 sx Class C

* Cement will be circulated to surface on all casing strings.

Devon Energy plans to drill to 3400' +/- to test the San Andres Formation for commercial quantities of oil. If the San Andres is deemed non-commercial, the wellbore will be plugged and abandoned per Federal regulations. Programs to adhere to onshore oil and gas regulations are outlined in the following exhibits and attachments.

Drilling Program
Surface Use and Operating Plan
Exhibit #1 - Blowout Prevention Equipment/
Choke Manifold
Exhibit #2 - Location and Elevation Plat
Exhibit #3 - Planned Access Roads
Exhibit #4 - Wells Within a One Mile Radius
Exhibit #5 - Production Facilities Plan
Exhibit #6 - Rotary Rig Layout
Exhibit #7 - Casing Design Parameters and Factors
Exhibit #8 - H₂S Operating Plan

The undersigned accepts all applicable terms, conditions, stipulation, and restrictions concerning operations conducted on the leased land or portion thereof, as described above.

Bond Coverage: Nationwide
BLM Bond File No.: CO-1104

APPROVAL SUBJECT TO
GENERAL REQUIREMENTS AND
SPECIAL STIPULATIONS

IN ABOVE SPACE DESCRIBE PROPOSED PROGRAM: If proposal is to deepen, give data on present productive zone and proposed new productive zone. If proposal is to drill or deepen directionally, give pertinent data on subsurface locations and measured and true vertical depths. Give blowout preventer program, if any.

24.

SIGNED E. L. Buttross, Jr.

TITLE E. L. BUTTROSS, JR.
DISTRICT ENGINEER

DATE 8/26/98

*(This space for Federal or State office use)

PERMIT NO. _____ APPROVAL DATE _____

Application approval does not warrant or certify that the applicant holds legal or equitable title to those rights in the subject lease which would entitle the applicant to conduct operations thereon.

CONDITIONS OF APPROVAL, IF ANY:

Acting

Assistant Field Office Manager,
Lands and Minerals

APPROVED BY (ORIG. SGD.) ARMANDO A. LOPEZ

TITLE

DATE

OCT 28 1998

See Instructions On Reverse Side

DISTRICT I
P.O. Box 1980, Hobbs, NM 88240

State of New Mexico
Energy, Minerals and Natural Resources Department

Form C-102
Revised February 10, 1994
Instruction on back
Submit to Appropriate District Office
State Lease - 4 Copies
Fee Lease - 3 Copies

DISTRICT II
P.O. Drawer DD, Artesia, NM 88210

OIL CONSERVATION DIVISION

DISTRICT III
1000 Rio Brazos Rd., Aztec, NM 87410

P.O. Box 2088
Santa Fe, New Mexico 87504-2088

☐ AMENDED REPORT

WELL LOCATION AND ACREAGE DEDICATION PLAT

API Number	Pool Code 51300	Pool Name RedLake (Q-GB-SA)
Property Code	Property Name WINDFOHR "4" FEDERAL	Well Number 4
OGRID No. 6137	Operator Name DEVON ENERGY CORPORATION	Elevation 3586'

Surface Location

UL or lot No.	Section	Township	Range	Lot Idn	Feet from the	North/South line	Feet from the	East/West line	County
LOT 14	4	18 S	27 E		1650	SOUTH	2200	EAST	EDDY

Bottom Hole Location If Different From Surface

UL or lot No.	Section	Township	Range	Lot Idn	Feet from the	North/South line	Feet from the	East/West line	County
Dedicated Acres	Joint or Infill	Consolidation Code	Order No.						

NO ALLOWABLE WILL BE ASSIGNED TO THIS COMPLETION UNTIL ALL INTERESTS HAVE BEEN CONSOLIDATED
OR A NON-STANDARD UNIT HAS BEEN APPROVED BY THE DIVISION

LOT 8	LOT 7	LOT 6	LOT 5
LOT 9	LOT 10	LOT 11	LOT 12
LOT 16	LOT 15	LOT 14	LOT 13
LOT 17	LOT 18	LOT 19	LOT 20

Diagram showing well location and acreage dedication plat. The well is located in the intersection of Lot 14 and Lot 15. The well location is marked with a circle and labeled with dimensions: 3599.1', 3591.7', 3581.8', 3592.7', and 2200'. A vertical line labeled 1650' is also shown.

OPERATOR CERTIFICATION

I hereby certify the the information contained herein is true and complete to the best of my knowledge and belief.

E. L. Buttross Jr.
Signature

E. L. Buttross, Jr
Printed Name

District Engineer
Title

8/26/98
Date

SURVEYOR CERTIFICATION

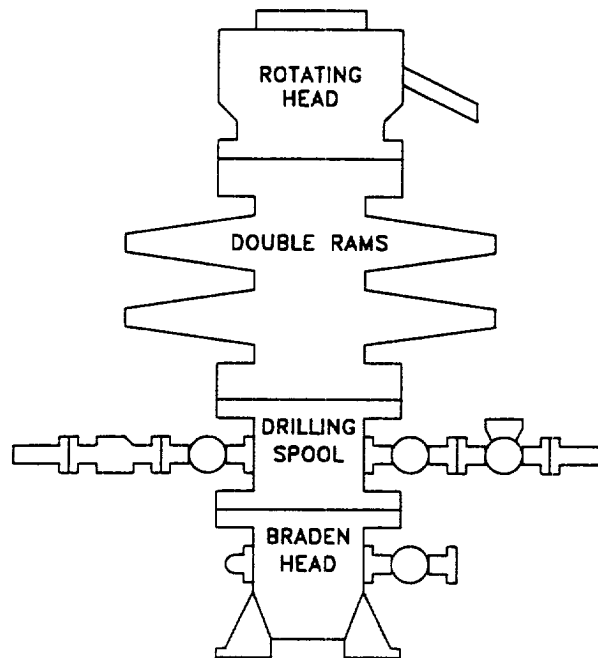
I hereby certify that the well location shown on this plat was plotted from field notes of actual surveys made by me or under my supervision, and that the same is true and correct to the best of my belief.

August 11, 1998
Date Surveyed

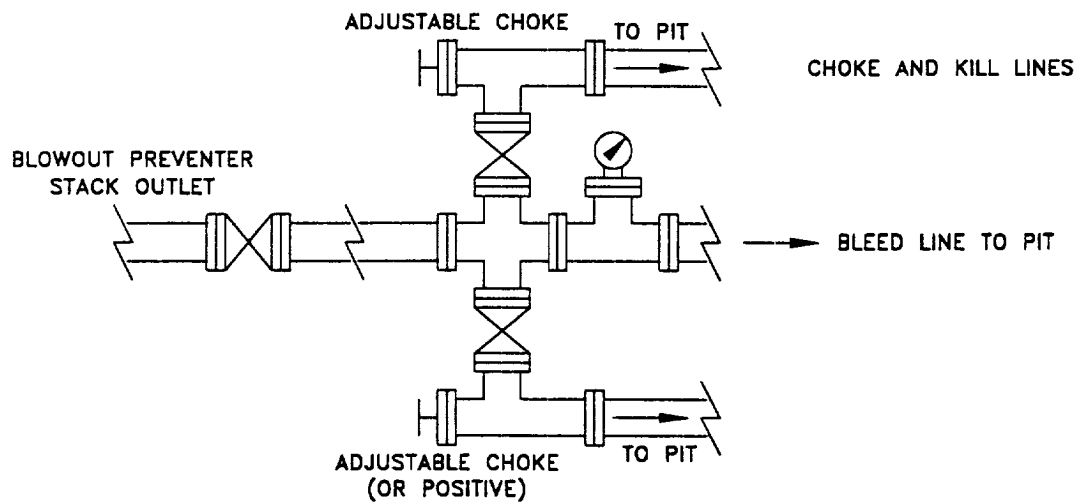
GARY L. JONES
Signature & Seal of Professional Surveyor

7977
Certificate No.

7977
Professional Surveyor



CHOKE MANIFOLD REQUIREMENT (2000 psi WP)



devon

WEST RED LAKE AREA

EDDY COUNTY, NEW MEXICO

BLOWOUT PREVENTOR
(2000 PSI MINIMUM WP)

Q:\...PROJECTS\EXPANDED

WRLBOP

Attachment to Exhibit #1
NOTES REGARDING BLOWOUT PREVENTORS
Windfohr 4 Federal #4
Eddy County, New Mexico

1. Drilling nipple will be constructed so it can be removed mechanically without the aid of a welder. The minimum internal diameter will equal BOP bore.
2. Wear ring will be properly installed in head.
3. Blowout preventor and all associated fittings will be in operable condition and tested to 1000 psi with the rig pump.
4. All fittings will be flanged.
5. A full bore safety valve with proper thread connections will be available on the rotary rig floor at all times.
6. All choke lines will be anchored to prevent movement.
7. All BOP equipment will be equal to or larger in bore than the internal diameter of the last casing string.
8. Will maintain a Kelly cock attached to the Kelly.
9. Hand wheels and wrenches will be properly installed and tested for safe operation.
10. All BOP equipment will meet API standards and include a minimum 40 gallon accumulator having two independent means of power to initiate closing operation.