

District I
PO Box 1980, Hobbs, NM 88241-198

District II
PO Drawer DD, Artesia, NM 88211-0719

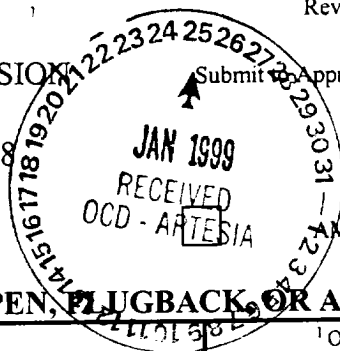
District III
1000 Rio Brazos Rd., Aztec, NM 87410

District IV
PO Box 2088, Santa Fe, NM 87504-2088

State of New Mexico
Energy, Minerals & Natural Resources Dept.

OIL CONSERVATION DIVISION
PO Box 2088
Santa Fe, NM 87504-2088

Form C-101
Revised February 10, 1994
Instructions on back
Submit to Appropriate District Office
State Lease - 6 Copies
Fee Lease - 5 Copies



AMENDED REPORT

APPLICATION FOR PERMIT TO DRILL, RE-ENTER, DEEPEN, PLUG BACK, OR ADD A ZONE

² Operator Name and Address. Devon Energy Corporation (Nevada) 1500 Mid America Tower 20 N. Broadway Oklahoma City, OK 73102-8260		¹ OGRID Number 6137
⁴ Property Code 3502		³ API Number 30-015-30565
⁵ Property Name STATE "BW" COM.		⁶ Well No. 3

⁷ Surface Location

UL or lot no. A	Section 27	Township 18S	Range 28E	Lot Ids	Feet from the 660	North/South line NORTH	Feet from the 865	East/West line EAST	County EDDY
--------------------	---------------	-----------------	--------------	---------	----------------------	---------------------------	----------------------	------------------------	----------------

⁸ Proposed Bottom Hole Location If Different From Surface

UL or lot no.	Section	Township	Range	Lot Ids	Feet from the	North/South line	Feet from the	East/West line	County
⁹ Proposed Pool 1 Travis (Upper Penn) 59860					¹⁰ Proposed Pool 2				

¹¹ Work Type Code N	¹² Well Type Code O	¹³ Cable/Rotary R	¹⁴ Lease Type Code S	¹⁵ Ground Level Elevation 3560'
¹⁶ Multiple No	¹⁷ Proposed Depth 10,100'	¹⁸ Formation Upper Penn	¹⁹ Contractor unknown at this time	²⁰ Spud Date February, 1999

²¹ Proposed Casing and Cement Program

Hole Size	Casing Size	Casing weight/foot	Setting Depth	Sacks of Cement	Estimated TOC
17 1/2"	13 3/8"	48	425'	470	surface
12 1/4"	8 5/8"	24 & 32	2,800'	900	surface
7 7/8"	5 1/2"	15.5 & 17	10,100'	1650	2,400'
18 Hours WOC					

²² Describe the proposed program. If this application is to DEEPEN or PLUG BACK give the data on the present productive zone and proposed new productive zone. Describe the blowout prevention program, if any. Use additional sheets if necessary.
Devon Energy Corporation (Nevada) plans to drill this well to a total depth of 10,000 feet and complete it as an Upper Penn development well. If it is deemed non-commercial then it will be plugged and abandoned in accordance with the rules and regulations established by the New Mexico OCD or converted to salt water disposal after installing casing and obtaining the necessary disposal permits. Blowout prevention equipment will be installed while drilling the intermediate and production holes.

²³ I hereby certify that the information given above is true and complete to the best of my knowledge and belief.		OIL CONSERVATION DIVISION	
Signature: Candace R. Graham		Approved by: ORIGINAL SIGNED BY TIM W. GUM B6X	
Printed name: Candace R. Graham		Title: DISTRICT II SUPERVISOR	
Title: Engineer Technician		Approval Date: 1-25-99	Expiration Date: 1-25-00
Date: January 21, 1999	Phone: (405) 235-3611 X4520	Conditions of Approval:	
		Attached <input type="checkbox"/>	

DISTRICT I
P. O. Box 1980
Hobbs, NM 88241-1980

State of New Mexico
Minerals, and Natural Resources Department

Form C-102
Revised 02-10-94
Instructions on back

DISTRICT II
P. O. Drawer DD
Artesia, NM 88211-0719

OIL CONSERVATION DIVISION
P. O. Box 2088
Santa Fe, New Mexico 87504-2088

Submit to the Appropriate
District Office
State Lease - 4 copies
Fee Lease - 3 copies

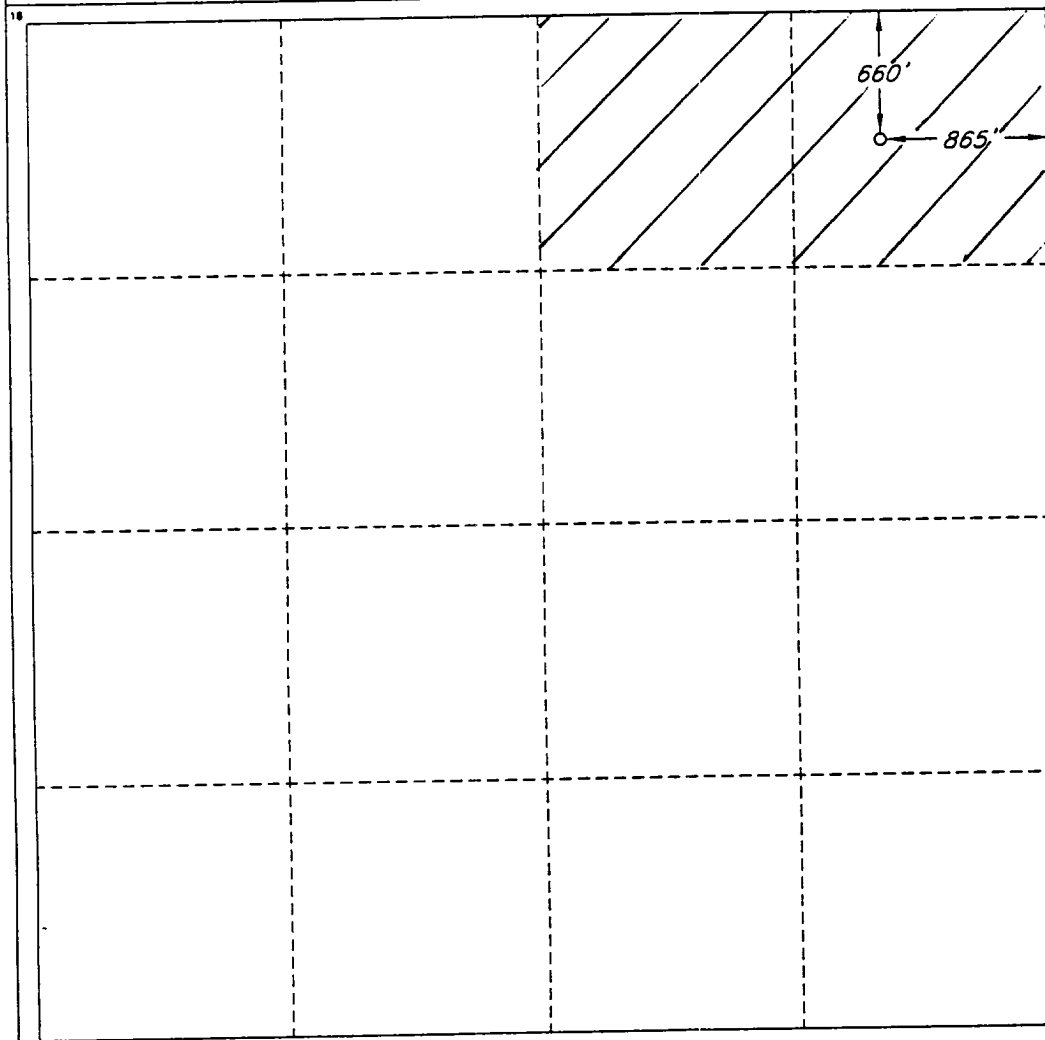
DISTRICT III
1000 Rio Brazos Rd.
Aztec, NM 87410

☐ AMENDED REPORT

DISTRICT IV
P. O. Box 2088
Santa Fe, NM 87507-2088

WELL LOCATION AND ACREAGE DEDICATION PLAT

1 API Number		2 Pool Code		3 Pool Name TRAVIS (UPPER PENN)					
4 Property Code		5 Property Name STATE B-W COM.						6 Well Number 3	
7 OGRID No. 6137		8 Operator Name DEVON ENERGY CORPORATION (NEVADA)						9 Elevation 3560'	
10 SURFACE LOCATION									
UL or lot no. A	Section 27	Township 18 SOUTH	Range 28 EAST, N.M.P.M.	Lot Ida	Feet from the 660'	North/South line NORTH	Feet from the 865'	East/West line EAST	County EDDY
11 BOTTOM HOLE LOCATION IF DIFFERENT FROM SURFACE									
UL or lot no.	Section	Township	Range	Lot Ida	Feet from the	North/South line	Feet from the	East/West line	County
12 Dedicated Acres 80		13 Joint or Infill		14 Consolidation Code		15 Order No.			
NO ALLOWABLE WELL BE ASSIGNED TO THIS COMPLETION UNTIL ALL INTERESTS HAVE BEEN CONSOLIDATED OR A NON-STANDARD UNIT HAS BEEN APPROVED BY THE DIVISION									

									
---	--	--	--	--	--	--	--	--	--

OPERATOR CERTIFICATION

I hereby certify that the information contained herein is true and complete to the best of my knowledge and belief.

Signature
Candace R. Graham

Printed Name
Candace R. Graham

Title
Engineering Tech.

Date
January 21, 1999

SURVEYOR CERTIFICATION

I hereby certify that the well location shown on this plat was plotted from field notes of actual surveys made by me or under my supervision, and that the same is true and correct to the best of my belief.

Date of Survey
JANUARY 19, 1999

Signature
Professional Surveyor
REGISTERED PROFESSIONAL SURVEYOR
12128
Certificate
ROGER M. ROBBINS P.S. #12128
JOB #62060 / 74 NW / V.H.B.

[illegible]

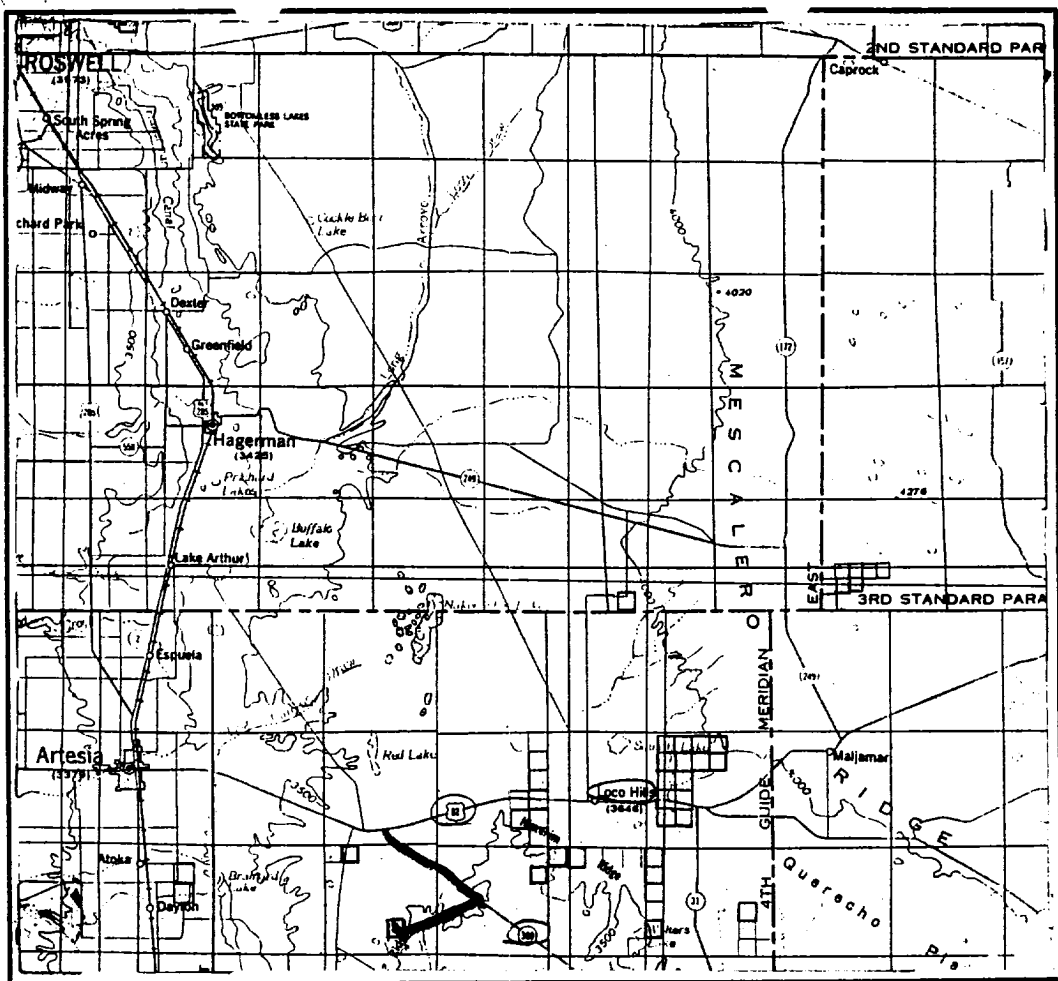
CONTOUR INTERVAL 10'

LONG. W 104°09'29"



2903 N. BIG SPRING
MIDLAND, TX. 79705
(800) 767-1653

VICINITY MAP



SECTION 27 TWP 18-S RGE 28-E
 SURVEY NEW MEXICO PRINCIPAL MERIDIAN
 COUNTY EDDY STATE NM
 DESCRIPTION 660' FNL & 865' FEL

OPERATOR DEVON ENERGY CORPORATION
 LEASE STATE B-W #3

DISTANCE & DIRECTION FROM THE JCT. OF STATE HWY.
360 & U.S. HWY. 82 ±10 MILES WEST OF LOCO HILLS,
THENCE SOUTHEAST 5.4 MILES ON STATE HWY. 360, THENCE
WEST 4.3 MILES ON COUNTY ROAD 217, THENCE NORTH
0.3 MILE ON LEASE ROAD, THENCE WEST 0.1 MILE ON
LEASE ROAD TO A POINT ±300' NORTH OF THE LOCATION.



This location has been very carefully staked on the ground according to the best official survey records, maps, and other data available to us.
 Review this plat and notify us immediately of any possible discrepancy.

TOPOGRAPHIC LAND SURVEYORS

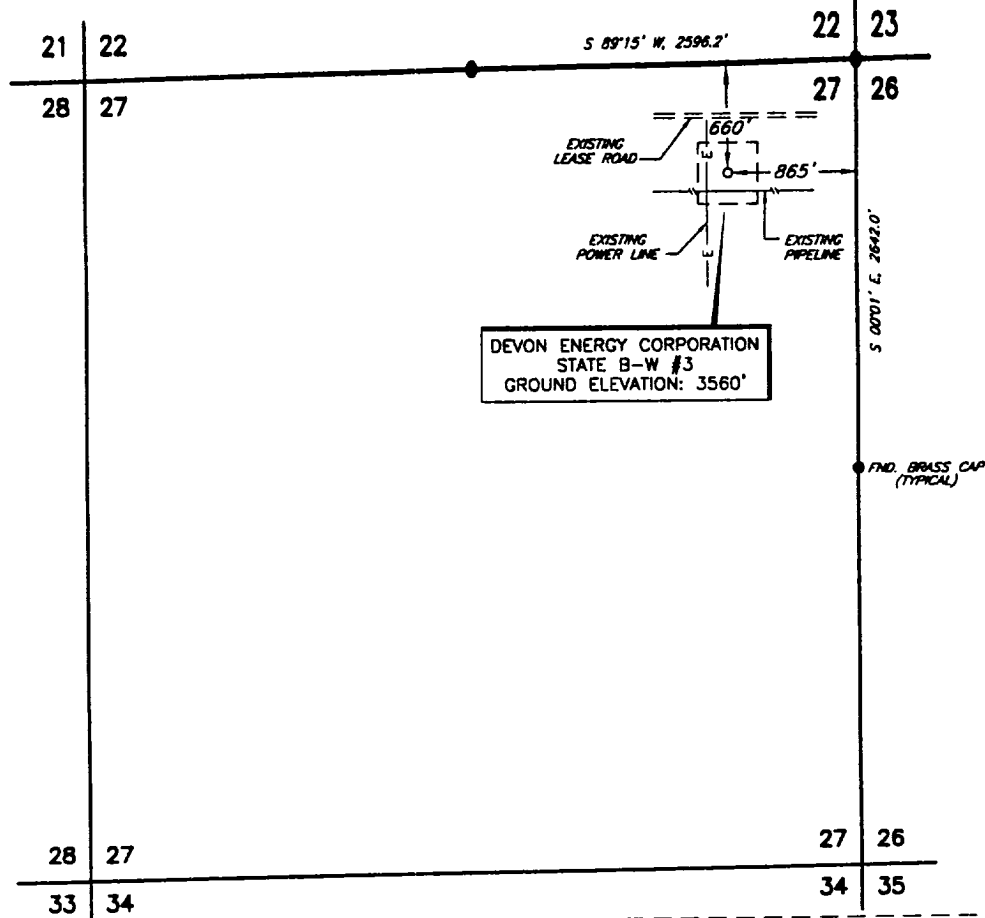
Surveying & Mapping for the Oil & Gas Industry

1307 N. HOBART
 PAMPA, TX. 79065
 (800) 658-6382

6709 N. CLASSEN BLVD.
 OKLAHOMA CITY, OK. 73116
 (800) 654-3219

2903 N. BIG SPRING
 MIDLAND, TX. 79705
 (800) 767-1653

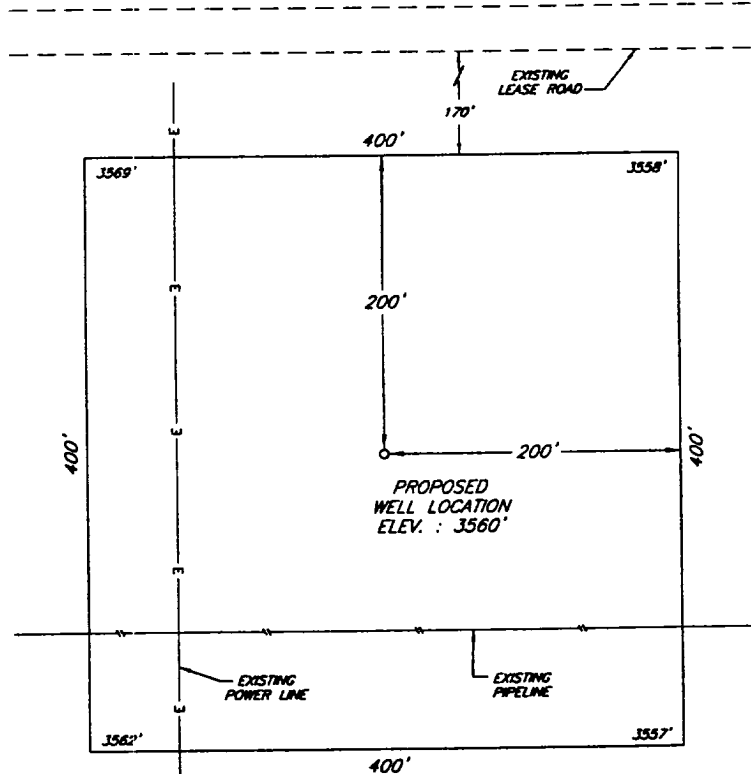
PLAT SHOWING PROPOSED
WELL LOCATION AND LEASE ROAD IN
SECTION 27, T-1, R-10E, N.M.P.M.
EDDY COUNTY, NEW MEXICO



PLAN VIEW
1" = 1000'



DETAIL VIEW
1" = 100'



				DEVON ENERGY CORPORATION	SCALE: AS SHOWN
					DATE: JANUARY 19, 1999
					JOB NO.: 62060-F
					QUAD NO.: 74 NW
NO.	REVISION	DATE	BY	<i>SURVEYING AND MAPPING BY</i> TOPOGRAPHIC LAND SURVEYORS <i>MIDLAND, TEXAS</i>	SHEET : 1 OF 1
SURVEYED BY: B.B.B.					
DRAWN BY: V.H.B.					
APPROVED BY: R.M.R.					