

District I  
PO Box 1980, Hobbs, NM 88241-1980  
  
District II  
PO Drawer DD, Artesia, NM 88211-0719  
  
District III  
1000 Rio Brazos Rd., Aztec, NM 87410  
  
District IV  
PO Box 2088, Santa Fe, NM 87504-2088

State of New Mexico  
Energy, Minerals & Natural Resources Department

OIL CONSERVATION DIVISION

PO Box 2088  
Santa Fe, NM 87504-2088

Form C-101  
Revised February 10, 1994  
Instructions on back  
Submit to Appropriate District Office  
  
State Lease - 6 Copies  
Fee Lease - 5 Copies



AMENDED REPORT

APPLICATION FOR PERMIT TO DRILL, RE-ENTER, DEEPEN, PLUGBACK, OR ADD A ZONE

<sup>2</sup> Operator Name and Address Devon Energy Corporation (Nevada) 1500 Mid America Tower 20 N. Broadway Oklahoma City, OK 73102-8260		<sup>1</sup> OGRID Number 6137
<sup>4</sup> Property Code 3502		<sup>3</sup> API Number 30-015-30584
<sup>5</sup> Property Name STATE "BW" COM.		<sup>6</sup> Well No. 4

<sup>7</sup> Surface Location

UL or lot no.	Section	Township	Range	Lot Ids	Feet from the	North/South line	Feet from the	East/West line	County
O	27	18S	28E		740	SOUTH	2264	EAST	EDDY

<sup>8</sup> Proposed Bottom Hole Location If Different From Surface

UL or lot no.	Section	Township	Range	Lot Ids	Feet from the	North/South line	Feet from the	East/West line	County

<sup>9</sup> Proposed Pool 1 Travis (Upper Penn)	<sup>10</sup> Proposed Pool 2 Post ID-1 3-5-99
---	--

<sup>11</sup> Work Type Code N	<sup>12</sup> Well Type Code O	<sup>13</sup> Cable/Rotary R	<sup>14</sup> Lease Type Code S	<sup>15</sup> Ground Level Elevation 3564'
<sup>16</sup> Multiple No	<sup>17</sup> Proposed Depth 10,100'	<sup>18</sup> Formation Upper Penn	<sup>19</sup> Contractor unknown at this time	<sup>20</sup> Spud Date March, 1999

Minimum WOC time 18 hrs

<sup>21</sup> Proposed Casing and Cement Program

Hole Size	Casing Size	Casing weight/foot	Setting Depth	Sacks of Cement	Estimated TOC
17 1/2"	13 3/8"	48	425'	470	surface
12 1/4"	8 5/8"	24 & 32	2,800'	900	surface
7 7/8"	5 1/2"	15.5 & 17	10,100'	1650	2,400'

<sup>22</sup> Describe the proposed program. If this application is to DEEPEN or PLUG BACK give the data on the present productive zone and proposed new productive zone. Describe the blowout prevention program, if any. Use additional sheets if necessary.

Devon Energy Corporation (Nevada) plans to drill this well to a total depth of 10,100 feet and complete it as an Upper Penn development well. If it is deemed non-commercial then it will be plugged and abandoned in accordance with the rules and regulations established by the New Mexico OCD or converted to salt water disposal after installing casing and obtaining the necessary disposal permits. Blowout prevention equipment will be installed while drilling the intermediate and production holes.

<sup>23</sup> I hereby certify that the information given above is true and complete to the best of my knowledge and belief.		OIL CONSERVATION DIVISION	
Signature: Candace R. Graham		Approved by: ORIGINAL SIGNED BY TIM W. GUM DISTRICT II SUPERVISOR	
Printed name: Candace R. Graham		Title:	
Title: Engineer Technician		Approval Date: 3-2-99	
Date: February 26, 1999	Phone: (405) 235-3611 X4520	Expiration Date: 3-2-99	
		Conditions of Approval:	
		Attached <input type="checkbox"/>	



1531251

DISTRICT I  
P. O. Box 1980  
Hobbs, NM 88241-1980

State of New Mexico  
Energy, Minerals, and Natural Resources Department

Form C-102  
Revised 02-10-94

Instructions on back

DISTRICT II  
P. O. Drawer DD  
Artesia, NM 88211-0719

**OIL CONSERVATION DIVISION**  
**P. O. Box 2088**  
**Santa Fe, New Mexico 87504-2088**

Submit to the Appropriate  
District Office  
State Lease - 4 copies  
Fee Lease - 3 copies

DISTRICT III  
1000 Rio Brazos Rd.  
Aztec, NM 87410

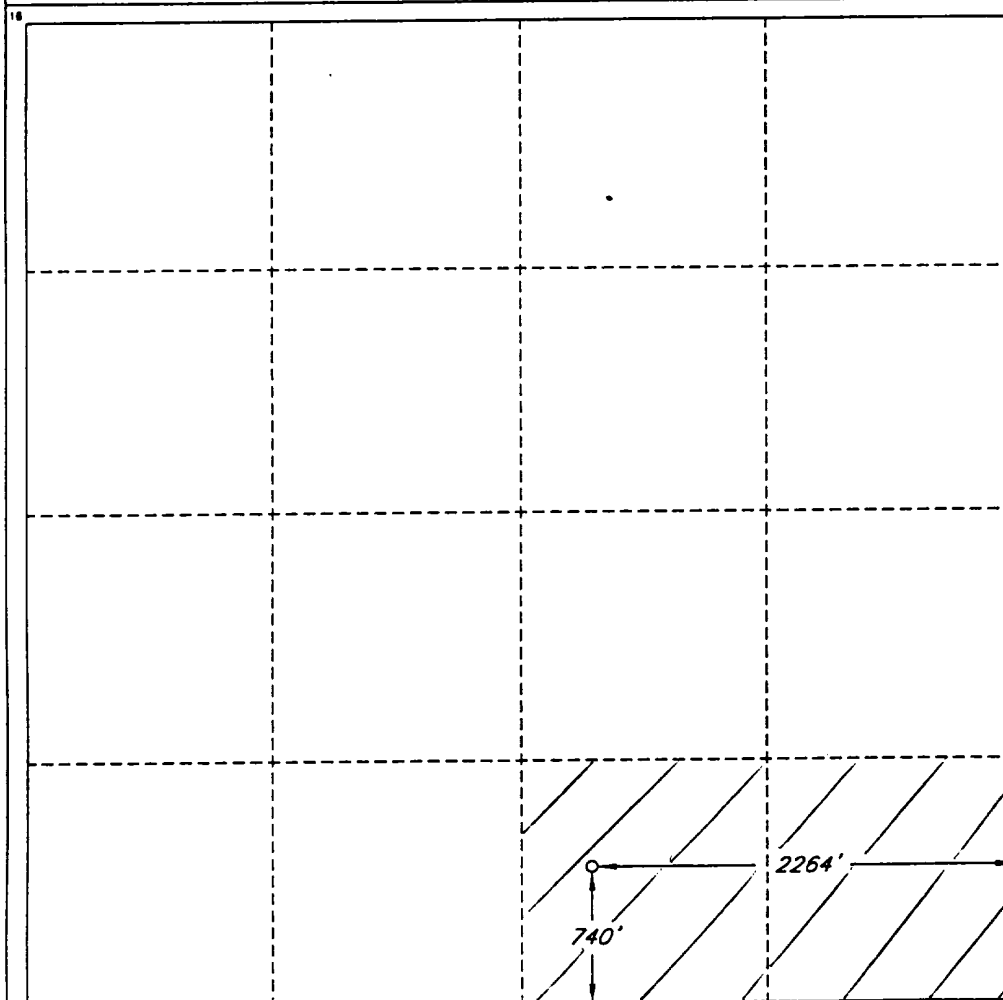
☐ AMENDED REPORT

DISTRICT IV  
P. O. Box 2088  
Santa Fe, NM 87507-2088

**WELL LOCATION AND ACREAGE DEDICATION PLAT**

1 API Number		2 Pool Code		3 Pool Name TRAVIS (UPPER PENN)					
4 Property Code		5 Property Name STATE BW COM						6 Well Number 4	
7 OGRID No. 6137		8 Operator Name DEVON ENERGY CORPORATION (NEVADA)						9 Elevation 3564'	
10 SURFACE LOCATION									
UL or lot no. 0	Section 27	Township 18 SOUTH	Range 28 EAST, N.M.P.M.	Lot Ida	Feet from the 740'	North/South line SOUTH	Feet from the 2264'	East/West line EAST	County EDDY
11 BOTTOM HOLE LOCATION IF DIFFERENT FROM SURFACE									
UL or lot no.	Section	Township	Range	Lot Ida	Feet from the	North/South line	Feet from the	East/West line	County
12 Dedicated Acres 80		13 Joint or Infill		14 Consolidation Code		15 Order No.			

NO ALLOWABLE WELL BE ASSIGNED TO THIS COMPLETION UNTIL ALL INTERESTS HAVE BEEN  
CONSOLIDATED OR A NON-STANDARD UNIT HAS BEEN APPROVED BY THE DIVISION



**OPERATOR CERTIFICATION**

I hereby certify that the information  
contained herein is true and complete  
to the best of my knowledge and belief.

Signature  
*Candace R. Graham*

Printed Name  
Candace R. Graham

Title  
Engineering Tech.

Date  
February 26, 1999

**SURVEYOR CERTIFICATION**

I hereby certify that the well  
location shown on this plat was  
plotted from field notes of actual  
surveys made by me or under  
my supervision, and that the  
same is true and correct to the  
best of my belief.

Date of Survey  
FEBRUARY 22, 1999

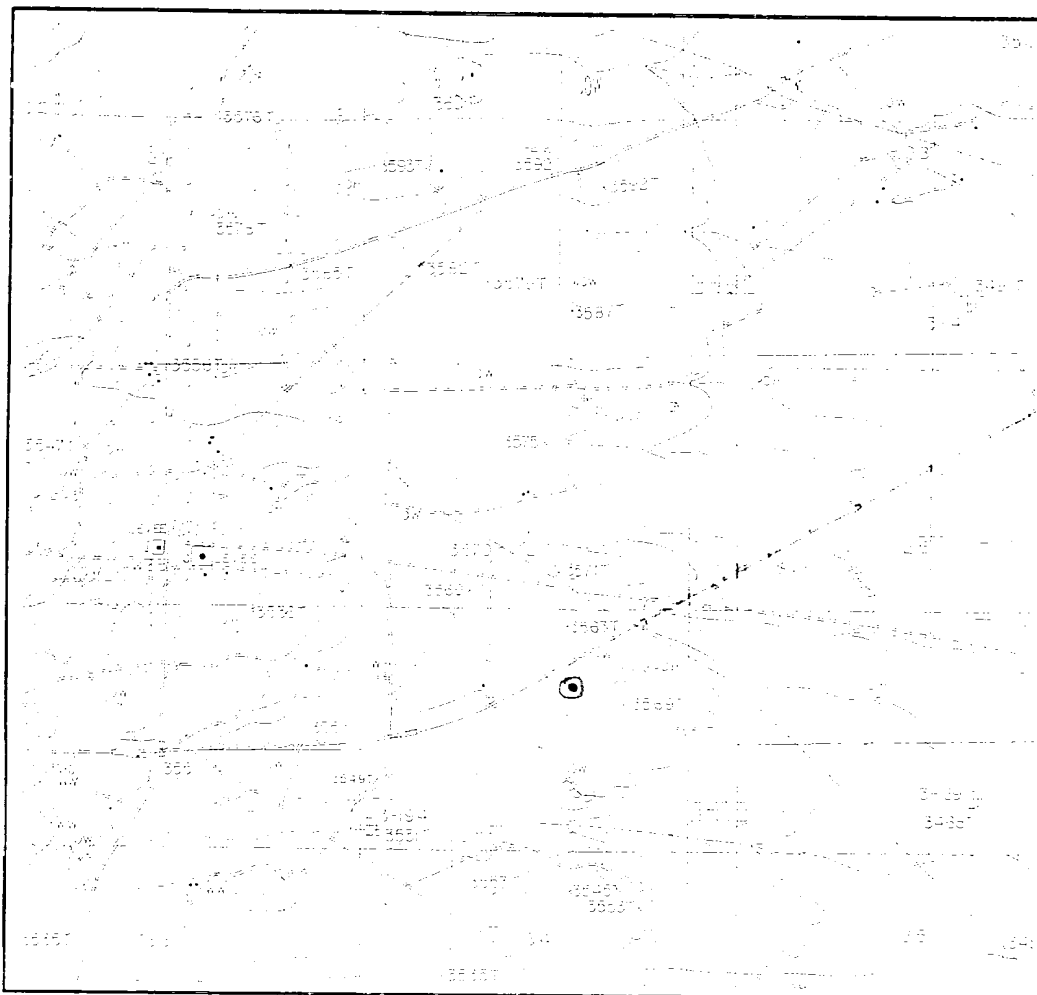
Signature and Seal of  
Professional Surveyor

*Roger M. Robbins*  
REGISTERED PROFESSIONAL SURVEYOR  
NEW MEXICO  
12128

Certificate No.  
ROGER M. ROBBINS, R.S. #12128

JOB #62558 / 99 SE / V.H.B.

# LOCATION & ELEVATION VERIFICATION MAP



SCALE: 1" = 2000'

CONTOUR INTERVAL 10'

SECTION 27 TWP 18-S RGE 28-E  
 SURVEY NEW MEXICO PRINCIPAL MERIDIAN  
 COUNTY EDDY STATE NM  
 DESCRIPTION 740' FSL & 2264' FEL  
 ELEVATION 3564'

OPERATOR DEVON ENERGY CORPORATION

LEASE STATE BW COM #4

U.S.G.S. TOPOGRAPHIC MAP

ILLINOIS CAMP NEW MEXICO

SCALED LAT. N 32°42'49"

LONG W 104°09'41"



This location has been very carefully staked on the ground according to the best official survey records, maps, and other data available to us.

Review this plat and notify us immediately of any possible discrepancy.

## TOPOGRAPHIC LAND SURVEYORS

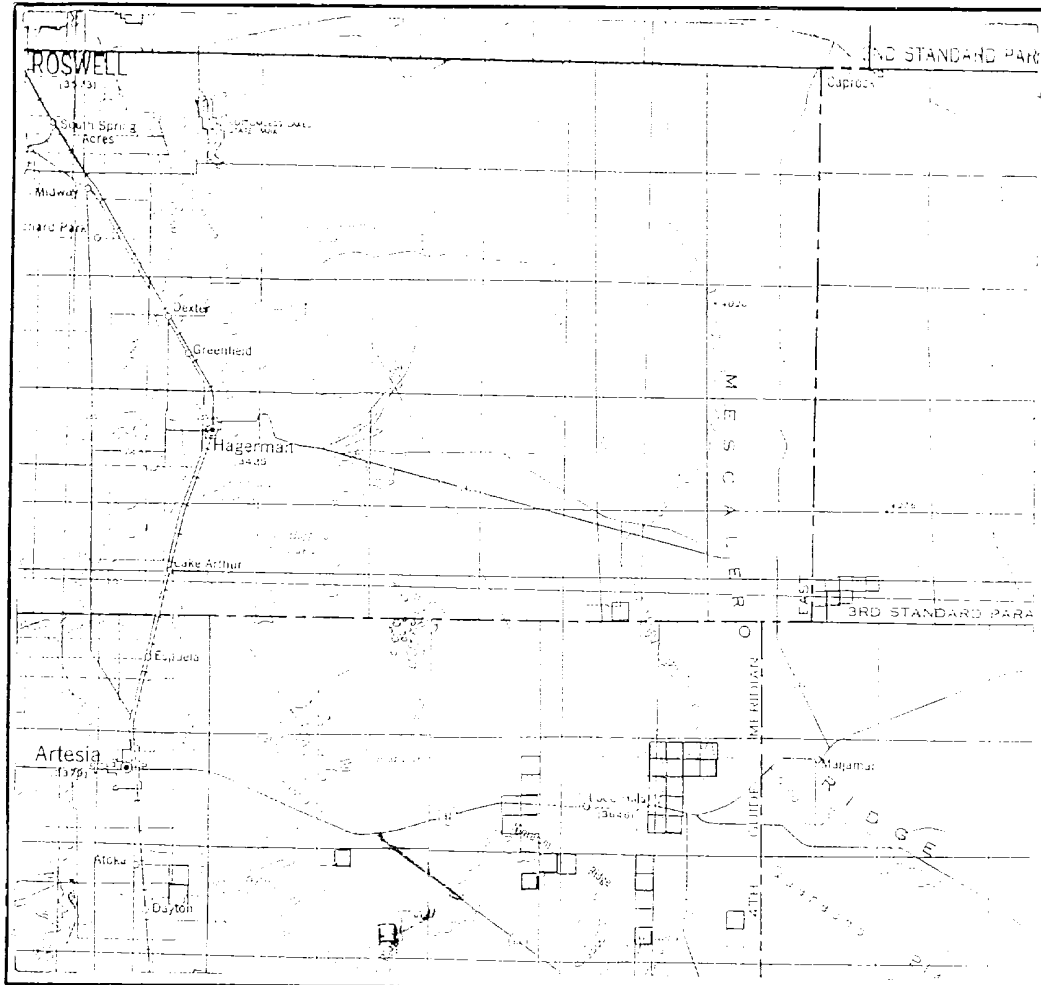
*Surveying & Mapping for the Oil & Gas Industry*

1307 N. HOBART  
 PAMPA, TX. 79065  
 (800) 668-6382

6709 N. CLASSEN BLVD.  
 OKLAHOMA CITY, OK. 73116  
 (800) 654-3219

2903 N. BIG SPRING  
 MIDLAND, TX. 79705  
 (800) 757-1553

# VICINITY MAP



SECTION 27 TWP 18-S RGE 28-E  
 SURVEY NEW MEX.CO. PRINCIPAL MERIDIAN  
 COUNTY EDDY STATE NV  
 DESCRIPTION 740' FSL & 2264' FSL

OPERATOR DEVON ENERGY CORPORATION

LEASE STATE BW COM. #4

DISTANCE & DIRECTION FROM JCT. OF STATE HWY. 360  
& U.S. HWY. 82 ±10 MILES WEST OF LOCO HILLS.  
THENCE SOUTHEAST 5.4 MILES ON STATE HWY. 360,  
THENCE WEST 4.6 MILES ON COUNTY ROAD 217 TO A  
POINT ±370' NORTH OF THE LOCATION.

This location has been very carefully staked on the ground according to the best official survey records, maps, and other data available to us.  
 Review this plot and notify us immediately of any possible discrepancy.

TOPOGRAPHIC LAND SURVEYORS

PLAT SHOWING PROPOSED  
WELL LOCATION AND LEASE ROAD IN  
SECTION 27, T-18-S, R-28-E, N.M.P.M.  
EDDY COUNTY, NEW MEXICO

