

District I
1625 N. French Dr., Hobbs, NM 88240
District II
811 South First, Artesia, NM 88210
District III
1000 Rio Brazos Road, Aztec, NM 87410
District IV
2040 South Pacheco, Santa Fe, NM 87505

State of New Mexico
Energy Minerals and Natural Resources
Oil Conservation Division
2040 South Pacheco
Santa Fe, NM 87505

Form C-101

Revised March 17, 1999

Submit to appropriate District Office

State Lease - 6 Copies

Fee Lease - 5 Copies

AMENDED REPORT

APPLICATION FOR PERMIT TO DRILL, RE-ENTER, DEEPEN, PLUG BACK, OR ADD A ZONE

¹ Operator Name and Address Devon Energy Production Company, L.P. 20 North Broadway, Suite 1500 Oklahoma City, Oklahoma 73102-8260		Walter M. Frank Senior Operations Engr (405) 552-4595	² GRID Number 6137 ³ API Number 30-015-30584
⁴ Property Code 3502	⁵ Property Name STATE "BW" COM.		⁶ Well No. 4

7 Surface Location

UL or lot no.	Section	Township	Range	Lot Idn	Feet from the	North/South line	Feet from the	East/West line	County
O	27	18S	28E		740'	SOUTH	2264'	EAST	EDDY

8 Proposed Bottom Hole Location If Different From Surface

UL or lot no.	Section	Township	Range	Lot Idn	Feet from the	North/South line	Feet from the	East/West line	County

9 Proposed Pool 1

UNDESIGNATED TRAVIS (WOLFCAMP) 96833

10 Proposed Pool 2

¹¹ Work Type Code P	¹² Well Type Code O	¹³ Cable/Rotary N/A	¹⁴ Lease Type Code S	¹⁵ Ground Level Elevation GL 3564'
¹⁶ Multiple No	¹⁷ Proposed Depth PBTD 9640'	¹⁸ Formation WOLFCAMP	¹⁹ Contractor N/A	²⁰ Spud Date JULY, 2000

(Existing casing & cement)

21 Proposed Casing and Cement Program

Hole Size	Casing Size	Casing weight/foot	Setting Depth	Sacks of Cement	Estimated TOC
17 1/2"	13 3/8"	48# H-40	424'	405	surface
12 1/4"	8 5/8"	32# K-55	2799'	1225	surface
7 7/8"	5 1/2"	17# L-80 & 15.5# J-55	10,049'	1310	1574'

²² Describe the proposed program. If this application is to DEEPEN or PLUG BACK, give the data on the present productive zone and proposed new productive zone. Describe the blowout prevention program, if any. Use additional sheets if necessary.

Devon Energy plans to set a bridge plug at approximately 9640', perforate the Wolfcamp, and evaluate for stimulation. Attached please find the form C102 and the engineer's proposed recompletion procedure.

²³ I hereby certify that the information given above is true and complete to the best of my knowledge and belief.

Signature: **Candace R. Graham**

Printed name: **Candace R. Graham**

Title: **Engineering Tech.**

Date: **June 15, 2000**

Phone:
(405) 235-3611, X4520

OIL CONSERVATION DIVISION

Approved by: **ORIGINAL SIGNED BY TIM W. GUM**
DISTRICT II SUPERVISOR **BGA**

Title:

Approval Date: **JUN 21 2000** Expiration Date: **JUN 21 2001**

Conditions of Approval:

Attached ☐

DISTRICT I
P. O. Box 1980
Hobbs, NM 88241-1980

State of New Mexico
Energy, Minerals, and Natural Resources

Form C-102
Revised 02-10-94
Instructions on back

DISTRICT II

P. O. Drawer 00
Artesia, NM 88211-0719

DISTRICT III
1000 Rio Brazos Rd.
Aztec, NM 87410

DISTRICT IV
P. O. Box 2088
Santa Fe, NM 87507-2088

OIL CONSERVATION

P. O. Box 2088
Santa Fe, New Mexico 87504-2088

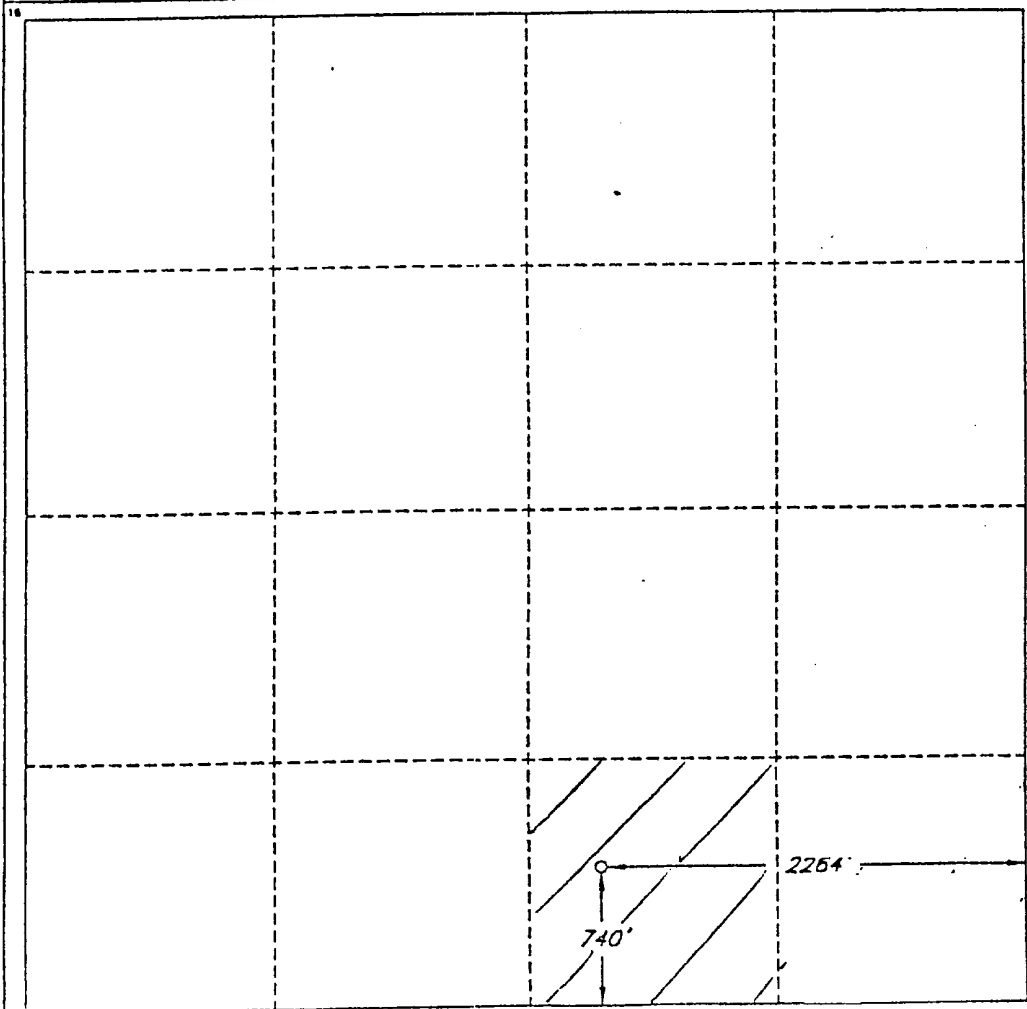
TO THE APPROPRIATE

Office
use - 4 copies
use - 3 copies

☐ AMENDED REPORT

WELL LOCATION AND ACREAGE DEDICATION PLAT

1 API Number		2 Pool Code		3 Pool Name TRAVIS (COPPER PENNY) WILDCAT (WOLFCAMP)					
4 Property Code		5 Property Name STATE BW COM						6 Well Number 4	
7 OGRID No. 6137		8 Operator Name DEVON ENERGY CORPORATION (NEVADA)						9 Elevation 3584'	
10 SURFACE LOCATION									
UL or lot no. 0	Section 27	Township 18 SOUTH	Range 28 EAST, N.M.P.M.	Lot Ida	Feet from the 740'	North/South line SOUTH	Feet from the 2284'	East/West line EAST	County EDDY
11 BOTTOM HOLE LOCATION IF DIFFERENT FROM SURFACE									
UL or lot no.	Section	Township	Range	Lot Ida	Feet from the	North/South line	Feet from the	East/West line	County
12 Dedicated Acres 40		13 Joint or Infill		14 Consolidation Code		15 Order No.			
NO ALLOWABLE WELL BE ASSIGNED TO THIS COMPLETION UNTIL ALL INTERESTS HAVE BEEN CONSOLIDATED OR A NON-STANDARD UNIT HAS BEEN APPROVED BY THE DIVISION									



OPERATOR CERTIFICATION
I hereby certify that the information contained herein is true and complete to the best of my knowledge and belief.

Signature
Candace R. Graham
Printed Name
Candace R. Graham
Title
Engineering Tech.
Date
February 26, 1999

SURVEYOR CERTIFICATION
I hereby certify that the well location shown on this plat was plotted from field notes of actual surveys made by me or under my supervision, and that the same is true and correct to the best of my belief.

Date of Survey
FEBRUARY 26, 1999

Signature and Seal of Professional Surveyor
Roger M. Robbins
Professional Surveyor
12128
REGISTERED PROFESSIONAL SURVEYOR
NEW MEXICO

Certificate No. 12128
ROGER M. ROBBINS, P.S. #12128
JOB #62558 / 99 SE / V.H.B.

DEVON ENERGY CORPORATION

Interoffice Correspondence

5/22/00 8:57 AM

TO: Rick White

FROM: W.M. Frank

RE: Recompletion Prognosis
State BW Com. #4
740' FSL & 2264' FEL
Section 27-T18S-R28E
Eddy County, New Mexico

Elevation 3564' GL 3578' KB

TD - 10,050' PBTD - 9,959'

Casing - 13-3/8" 48# H-40 @ 424' Cmt to Surface
 8-5/8" 32# K-55 @ 2,799' Cmt to surface
 5-1/2" 17 & 15.5#, L-80/J-55 @ 10,049' w/140 sxs "H".
 ECP with DV @ 9,434' cmt'd w/600 sxs.
 DV @ 6,499' cmt'd w/570 sxs.

2 7/8", 6.5#, L-80, 8rd Tubing
Capacity - 0.0058 Bpf Displacement - 0.00233 Bpf
Burst - 10570 psig new, 8456 psig @ 80%

Procedure

1. MIRU DDPU.
2. POOH laying down rod string. Make sure to follow API handling guidelines while laying down rod string.
3. ND pumping tee and NU BOPE. Release TAC and POOH standing back tubing string.
4. MIRU electric line company. TIH and set composite bridge plug @ 9,640'. POOH and RDMO electric line company.
5. PU and TIH w/TCP guns below retrievable production packer with On/Off tool on 2 7/8", L-80 tubing. TIH and spot guns at 8,834 - 54'. MIRU pump truck and transport. Circulate hole with 2% KCl substitute containing 2 gpt Flo-back 30.

State BW Com. #4

Perf Wolfcamp

May, 2000

Page 2

6. MIRU electric line company. TIH with GR/CCl and correlate tubing to Schlumberger Platform Express Three Detector Litho-Density compensated Neutron / NGT log ran 4/9/99. POOH and RDMO electric line company.
7. Move tubing as necessary to get gun on depth while spacing out for tree.
8. Set packer, ND BOPE and NU Tree. Test annulus to 1,000 psig for 15 minutes.
9. Swab fluid level in tubing down to 8,500'. Lay flow back line to tank.
10. With tree open to flowback line, drop firing bar for TCP guns.
11. Flow back well to tank until well cleans up. If stimulation is necessary MIRU BJ services and pump acid breakdown job as per BJ procedure. Flow/swab well back as necessary.
12. MIRU 4 point well test equipment. Run either 4 point or 1 point test. RDMO well test equipment.
13. Hook well to sales line and produce well to sales. Report tubing, casing, choke, and sales line pressure daily.