

District I
PO Box 1980, Hobbs, NM 88241-1980

District II
PO Drawer DD, Artesia, NM 88211-0719

District III
1000 Rio Brazos Rd., Aztec, NM 87410

District IV
PO Box 2088, Santa Fe, NM 87504-2088

State of New Mexico
Energy, Minerals & Natural Resources Department

OIL CONSERVATION DIVISION

PO Box 2088

Santa Fe, NM 87504-2088

Form C-101

Revised February 10, 1994

Instructions on back

Submit to Appropriate District Office

State Lease - 6 Copies

Fee Lease - 5 Copies



AMENDED REPORT

APPLICATION FOR PERMIT TO DRILL, RE-ENTER, DEEPEN, PLUGBACK, OR ADD A ZONE

Devon Energy Corporation (Nevada) 1500 Mid America Tower 20 N. Broadway Oklahoma City, OK 73102-8260	¹ OGRID Number 6137	
	³ API Number 30-015-30585	
⁴ Property Code 3502	⁵ Property Name STATE "BW" COM.	⁶ Well No. 5

⁷ Surface Location

UL or lot no. I	Section 27	Township 18S	Range 28E	Lot lds	Feet from the 1654	North/South line SOUTH	Feet from the 330	East/West line EAST	County EDDY
--------------------	---------------	-----------------	--------------	---------	-----------------------	---------------------------	----------------------	------------------------	----------------

⁸ Proposed Bottom Hole Location If Different From Surface

UL or lot no.	Section	Township	Range	Lot lds	Feet from the	North/South line	Feet from the	East/West line	County
⁹ Proposed Pool 1 Travis (Upper Penn)					¹⁰ Proposed Pool 2 Post ID-1 3-5-99 HPI + LCC				

¹¹ Work Type Code N	¹² Well Type Code O	¹³ Cable/Rotary R	¹⁴ Lease Type Code S	¹⁵ Ground Level Elevation 3533'
¹⁶ Multiple No	¹⁷ Proposed Depth 10,100'	¹⁸ Formation Upper Penn	¹⁹ Contractor unknown at this time	²⁰ Spud Date April, 1999

Minimum VOC time 18 hrs ²¹ Proposed Casing and Cement Program

Hole Size	Casing Size	Casing weight/foot	Setting Depth	Sacks of Cement	Estimated TOC
17 1/2"	13 3/8"	48	425'	470	surface
12 1/4"	8 5/8"	24 & 32	2,800'	900	surface
7 7/8"	5 1/2"	15.5 & 17	10,100'	1650	2,400'

²² Describe the proposed program. If this application is to DEEPEN or PLUG BACK give the data on the present productive zone and proposed new productive zone. Describe the blowout prevention program, if any. Use additional sheets if necessary.

Devon Energy Corporation (Nevada) plans to drill this well to a total depth of 10,100 feet and complete it as an Upper Penn development well. If it is deemed non-commercial then it will be plugged and abandoned in accordance with the rules and regulations established by the New Mexico OCD or converted to salt water disposal after installing casing and obtaining the necessary disposal permits. Blowout prevention equipment will be installed while drilling the intermediate and production holes.

²³ I hereby certify that the information given above is true and complete to the best of my knowledge and belief.

Signature: Candace R. Graham

Printed name Candace R. Graham

Title: Engineer Technician

Date: February 26, 1999

Phone: (405) 235-3611 X4520

OIL CONSERVATION DIVISION

Approved by: ORIGINAL SIGNED BY TIM W. GUN
DISTRICT II SUPERVISOR

Title:

Approval Date: 3-2-99

Expiration Date: 3-2-00

Conditions of Approval:

Attached ☐

DISTRICT I
P. O. Box 1980
Hobbs, NM 88241-1980

DISTRICT II
P. O. Drawer DD
Artesia, NM 88211-0719

DISTRICT III
1000 Rio Brazos Rd.
Aztec, NM 87410

DISTRICT IV
P. O. Box 2088
Santa Fe, NM 87507-2088

State of New Mexico
Energy, Minerals, and Natural Resources Department

Form C-102
Revised 02-10-94

Instructions on back

Submit to the Appropriate
District Office
State Lease - 4 copies
Fee Lease - 3 copies

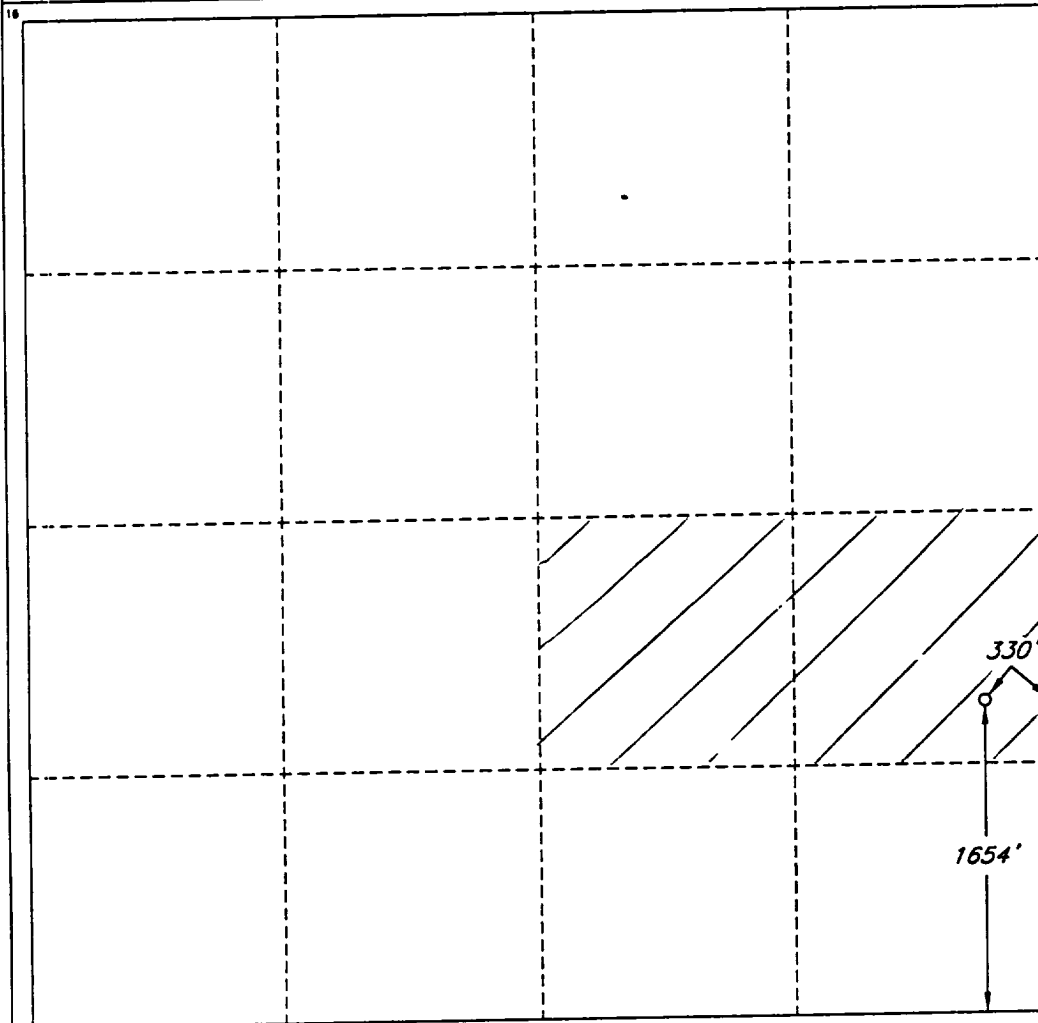
OIL CONSERVATION DIVISION
P. O. Box 2088
Santa Fe, New Mexico 87504-2088

☐ AMENDED REPORT

WELL LOCATION AND ACREAGE DEDICATION PLAT

1 API Number		2 Pool Code		3 Pool Name TRAVIS (UPPER PENN)					
4 Property Code		5 Property Name STATE BW COM						6 Well Number 5	
7 OGRID No. 6137		8 Operator Name DEVON ENERGY CORPORATION (NEVADA)						9 Elevation 3533'	
10 SURFACE LOCATION									
UL or lot no. I	Section 27	Township 18 SOUTH	Range 28 EAST, N.M.P.M.	Lot Ida	Feet from the 1654'	North/South line SOUTH	Feet from the 330'	East/West line EAST	County EDDY
11 BOTTOM HOLE LOCATION IF DIFFERENT FROM SURFACE									
UL or lot no.	Section	Township	Range	Lot Ida	Feet from the	North/South line	Feet from the	East/West line	County
12 Dedicated Acres 80		13 Joint or Infill		14 Consolidation Code		15 Order No.			

NO ALLOWABLE WELL BE ASSIGNED TO THIS COMPLETION UNTIL ALL INTERESTS HAVE BEEN
CONSOLIDATED OR A NON-STANDARD UNIT HAS BEEN APPROVED BY THE DIVISION



OPERATOR CERTIFICATION

I hereby certify that the information
contained herein is true and complete
to the best of my knowledge and belief.

Signature

Candace R. Graham

Printed Name

Candace R. Graham

Title

Engineering Tech.

Date

February 26, 1999

SURVEYOR CERTIFICATION

I hereby certify that the well
location shown on this plat was
plotted from field notes of actual
surveys made by me or under
my supervision, and that the
same is true and correct to the
best of my belief.

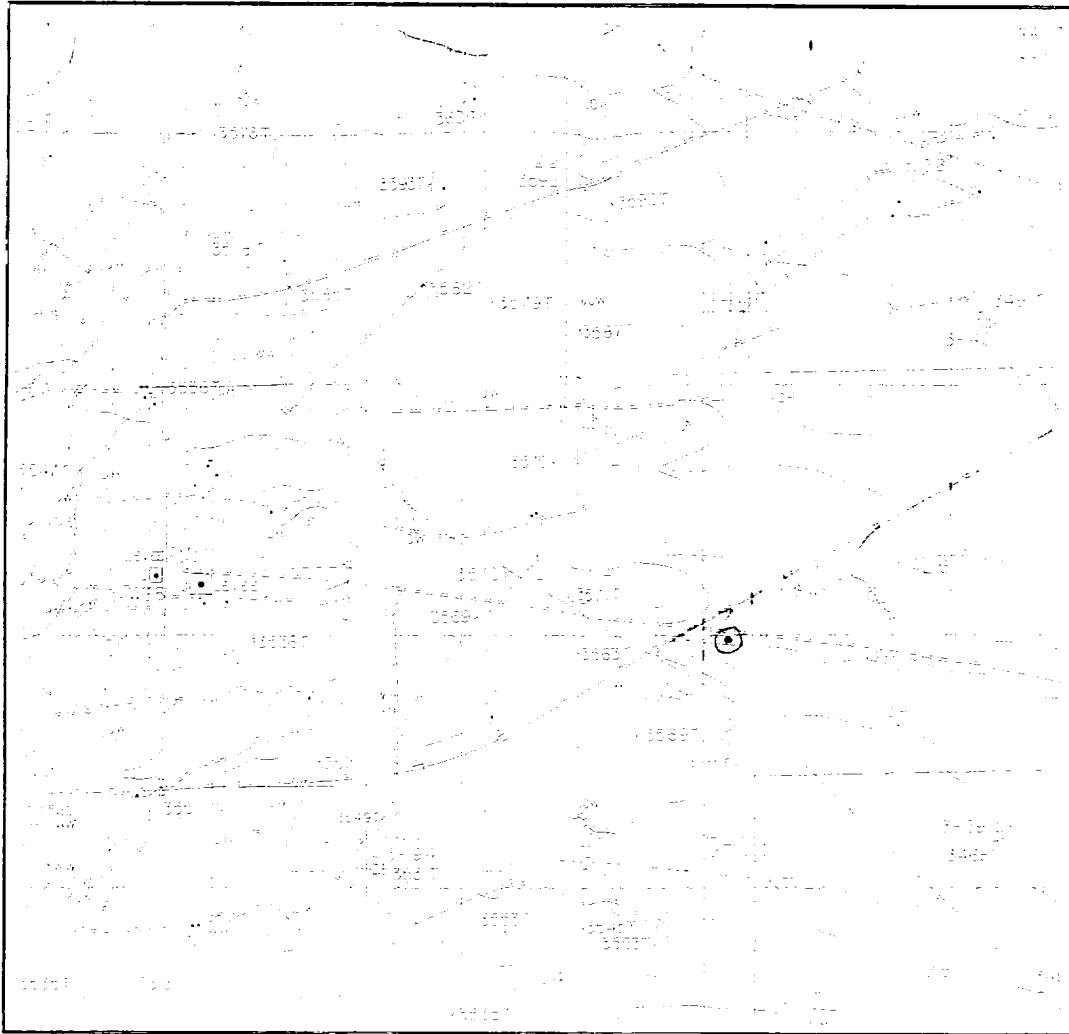
Date of Survey

FEBRUARY 26, 1999

Signature
Professional Engineer

REGISTERED PROFESSIONAL SURVEYOR
12128
Certificate No.
ROGER M. ROBBINS P.S. #12128
JOB #62559 / 99 SE / V.H.B.

LOCATION & ELEVATION VERIFICATION MAP



SCALE: 1" = 2000'

CONTOUR INTERVAL: 10'

SECTION: 27 TWP: 18-S RGE: 28-E

SURVEY: NEW MEXICO PRINCIPAL MERIDIAN

COUNTY: EDDY STATE: NM

DESCRIPTION: 1654' FS. & 330' FE.

ELEVATION: 3533'

OPERATOR: DEVON ENERGY CORPORATION

LEASE: STATE BW COM #5

U.S.G.S. TOPOGRAPHIC MAP

ILLINOIS CAMP, NEW MEXICO

SCALED LAT: N 32°42'59"

LONG: W 104°09'21"

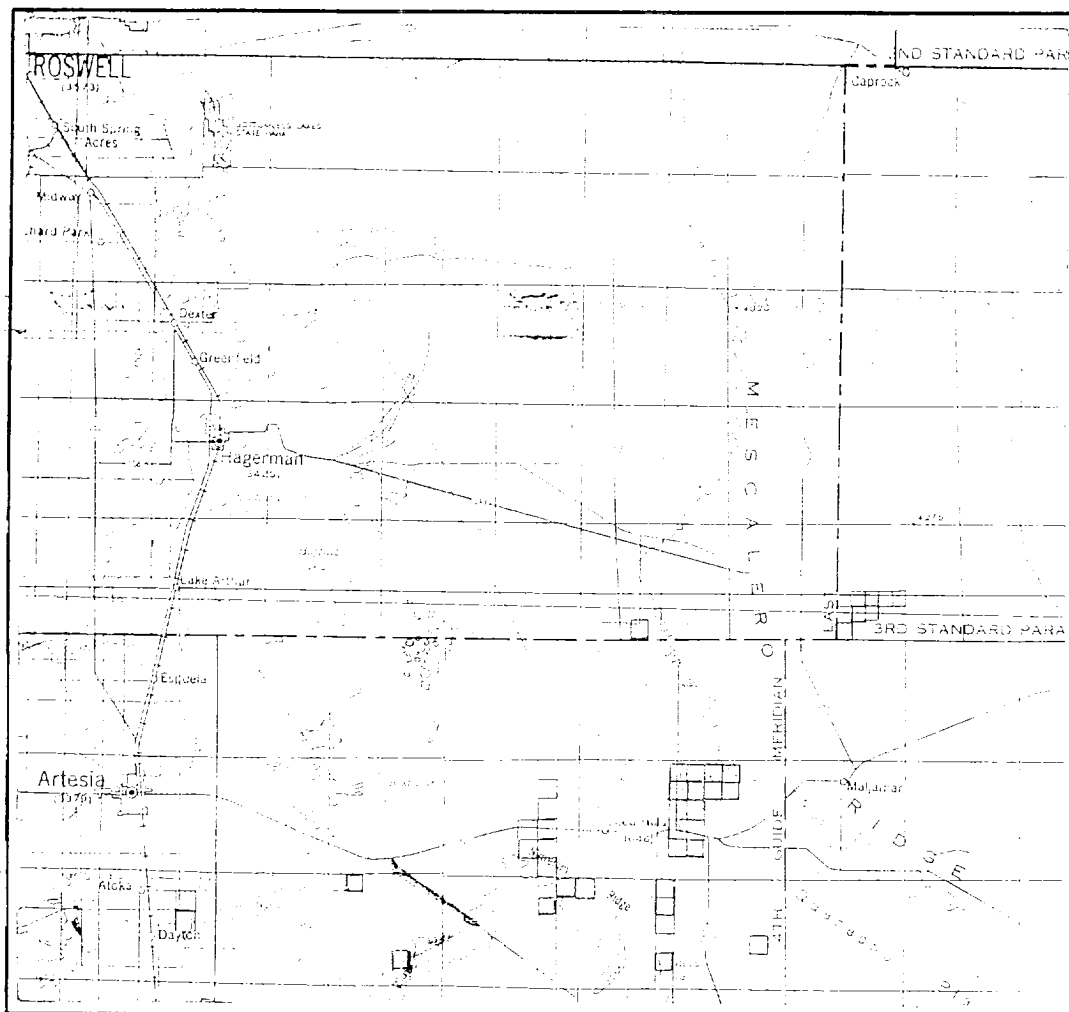


This location has been very carefully staked on the ground according to the best official survey records, maps, and other data available to us.
Review this plot and notify us immediately of any possible discrepancy.

TOPOGRAPHIC LAND SURVEYORS

Surveying & Mapping for the Oil & Gas Industry

VICINITY MAP



SECTION 27 TWP 18-S RGE 28-E
 SURVEY NEW MEXICO PRINCIPAL MERIDIAN
 COUNTY EDDY STATE NM
 DESCRIPTION 1654' FSL & 330' FEL

OPERATOR DEVON ENERGY CORPORATION
 LEASE STATE BW COM #5

DISTANCE & DIRECTION FROM JCT. OF STATE HWY. 360
& U.S. HWY. 82 ±10 MILES WEST OF LOCO HILLS,
THENCE SOUTHEAST 5.4 MILES ON STATE HWY. 360,
THENCE WEST 4.4 MILES ON COUNTY ROAD 217,
THENCE SOUTHEAST 0.2 MILE ON LEASE ROAD TO A
POINT ±550' SOUTH OF THE LOCATION.

This location has been very carefully staked on the ground according to the best official survey records, maps, and other data available to us.
 Review this plat and notify us immediately of any possible discrepancy.

TOPOGRAPHIC LAND SURVEYORS

Surveying & Mapping for the Oil & Gas Industry

1307 N. HOBART
 PAMPA, TX. 79065

6709 N. CLASSEN BLVD.
 OKLAHOMA CITY, OK. 73115

2903 N. BIG SPRING
 MIDLAND, TX. 79705

PLAT SHOWING PROPOS'
WELL LOCATION AND LEASE ROAD IN
SECTION 27, T-18-S, R-28-E, N.M.P.M.
EDDY COUNTY, NEW MEXICO

