

DISTRICT I
P.O. Box 1980, Hobbs, NM 88241-1980

DISTRICT II
P.O. Drawer DD, Artesia, NM 88211-0719

DISTRICT III
1000 Rio Brazos Rd., Aztec, NM 87410

DISTRICT IV
P.O. BOX 2088, SANTA FE, N.M. 87504-2088

State of New Mexico
Energy, Minerals and Natural Resources Department

Form C-102
Revised February 10, 1994
Submit to Appropriate District Office
State Lease - 4 Copies
Fee Lease - 3 Copies

OIL CONSERVATION DIVISION
P.O. Box 2088

Santa Fe, New Mexico 87504-2088

☐ AMENDED REPORT

WELL LOCATION AND ACREAGE DEDICATION PLAT

| | | |
|---------------|----------------------------|-----------------------------|
| API Number | Pool Code | Pool Name |
| | | Turkey Track; Morrow, North |
| Property Code | Property Name | Well Number |
| | SAND DUNES 36 STATE COM | 1 |
| OGRD No. | Operator Name | Elevation |
| 015742 | NEARBURG PRODUCING COMPANY | 3444' |

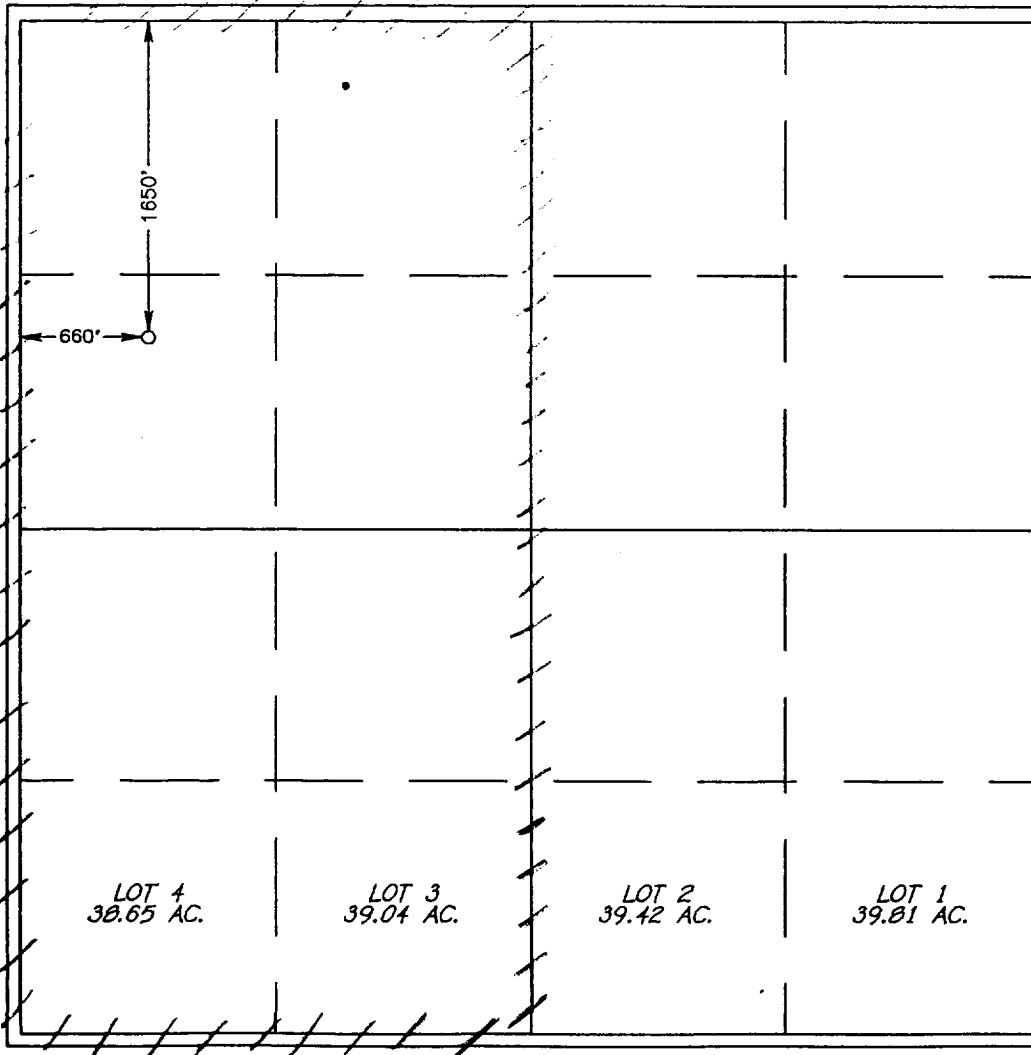
Surface Location

| | | | | | | | | | |
|---------------|---------|----------|-------|---------|---------------|------------------|---------------|----------------|--------|
| UL or lot No. | Section | Township | Range | Lot Idn | Feet from the | North/South line | Feet from the | East/West line | County |
| E | 36 | 18 S | 29 E | | 1650 | NORTH | 660 | WEST | EDDY |

Bottom Hole Location If Different From Surface

| | | | | | | | | | |
|-----------------|-----------------|--------------------|-----------|---------|---------------|------------------|---------------|----------------|--------|
| UL or lot No. | Section | Township | Range | Lot Idn | Feet from the | North/South line | Feet from the | East/West line | County |
| | | | | | | | | | |
| Dedicated Acres | Joint or Infill | Consolidation Code | Order No. | | | | | | |
| 320 | N | | | | | | | | |

NO ALLOWABLE WILL BE ASSIGNED TO THIS COMPLETION UNTIL ALL INTERESTS HAVE BEEN CONSOLIDATED
OR A NON-STANDARD UNIT HAS BEEN APPROVED BY THE DIVISION



OPERATOR CERTIFICATION

I hereby certify the the information
contained herein is true and complete to the
best of my knowledge and belief.

Signature

H. R. Willis
Printed Name

Drilling Superintendent
Title

5/4/95
Date

SURVEYOR CERTIFICATION

I hereby certify that the well location shown
on this plat was plotted from field notes of
actual surveys made by me or under my
supervision, and that the same is true and
correct to the best of my belief.

SEPTEMBER 30, 1998

Date Surveyed CDG

Signature of Surveyor
Professional Surveyor

NEW MEXICO
RONALD E. EDSON
8249
10-06-98
11-13-98

Certificate No. 80461 EDSON 3239
CARL EDSON 12641