

UNITED STATES
DEPARTMENT OF THE INTERIOR
BUREAU OF LAND MANAGEMENT

OMB NO. 1004-0136
Expires: February 28, 1995

APPLICATION FOR PERMIT TO DRILL OR DEEPEN

1A. TYPE OF WORK

DRILL ☒

DEEPEN ☐

B. TYPE OF WELL

OIL WELL ☒

GAS WELL ☐

OTHER

2511

SINGLE ZONE ☒

MULTIPLE ZONE ☐

2. NAME OF OPERATOR

W.A. & E.R. HUDSON, INC.

(JON B. SMITH (505-676-2266))

3. ADDRESS AND TELEPHONE NO.

616 TEXAS STREET, FIRT WORTH TEXAS, 76102 (817-336-7190)

4. LOCATION OF WELL (Report location clearly and in accordance with any State requirements.)

1340' FNL & 1340' FWL SEC. 25 T17S-R31E EDDY CO. NM

At proposed prod. zone SAME

14. DISTANCE IN MILES AND DIRECTION FROM NEAREST TOWN OR POST OFFICE

Approximately 10 miles East of Loco Hills New Mexico

15. DISTANCE FROM PROPOSED LOCATION TO NEAREST PROPERTY OR LEASE LINE, FT.

40'

(Also to nearest drig. unit line, if any)

19. DISTANCE FROM PROPOSED LOCATION TO NEAREST WELL, DRILLING, COMPLETED, OR APPLIED FOR, ON THIS LEASE, FT.

990'

21. ELEVATIONS (Show whether DF, RT, GR, etc.)

3858' GR.

23.

PROPOSED CASING AND CEMENTING PROGRAM

| SIZE OF HOLE | GRADE SIZE OF CASING | WEIGHT PER FOOT | SETTING DEPTH | QUANTITY OF CEMENT |
|--------------|----------------------|-----------------|---------------|------------------------------|
| 17 1/2" | H-40 13 3/8" | 48 | 600' | 700 Sx. circulate to surface |
| 12 1/2" | J-55 8 5/8" | 24 | 1900' | 700 Sx. " " " |
| 7 7/8" | J-55 5 1/2" | 15.5 | 4200' | 850 Sx. " " " |

1. Drill 17 1/2" hole to 600'. Run and set 600' of 13 3/8" H-40 48# ST&C casing. Cement with 700 Sx. of Class "C" cement + 2% CaCl, circulate cement to surface.
2. Drill 12 1/2" hole to 1900'. Run and set 1900' of 8 5/8" J-55 24# ST&C casing. Cement with 700 Sx. of Class "C" cement + additives, circulate cement.
3. Drill 7 7/8" hole to 4200'. Run and set 4200' of 5 1/2" J-55 15.5# ST&C casing. Cement with 850 Sx. of Class "C" cement + additives. estimate top of cement 1200'.

APPROVAL SUBJECT TO
GENERAL REQUIREMENTS AND
SPECIAL STIPULATIONS
ATTACHED

IN ABOVE SPACE DESCRIBE PROPOSED PROGRAM: If proposal is to deepen, give data on present productive zone and proposed new productive zone. If proposal is to drill or deepen directionally, give pertinent data on subsurface locations and measured and true vertical depths. Give blowout preventer program, if any.

24.

SIGNED

TITLE Agent

DATE 12/02/99

(This space for Federal or State office use)

PERMIT NO.

APPROVAL DATE

Application approval does not warrant or certify that the applicant holds legal or equitable title to those rights in the subject lease which would entitle the applicant to conduct operations thereon.

CONDITIONS OF APPROVAL, IF ANY:

Active

Assistant Field Office Manager
Lands and Minerals

APPROVED BY

TITLE

DATE

*See Instructions On Reverse Side

APPROVED FOR

Title 18 U.S.C. Section 1001, makes it a crime for any person knowingly and willfully to make to any department or agency of the United States any false, fictitious or fraudulent statements or representations as to any matter within its jurisdiction.

RECEIVED

DEC 03 90

810
ROSWELL NM

DISTRICT I
P.O. Box 1980, Hobbs, NM 88241-1980

State of New Mexico
Energy, Minerals and Natural Resources Department

Form C-102
Revised February 10, 1994
Submit to Appropriate District Office
State Lease - 4 Copies
Fee Lease - 3 Copies

DISTRICT II
P.O. Drawer 100, Artesia, NM 88211-0719

DISTRICT III
1000 Rio Brazos Rd., Aztec, NM 87410

OIL CONSERVATION DIVISION

P.O. Box 2088
Santa Fe, New Mexico 87504-2088

DISTRICT IV
P.O. Box 2088, Santa Fe, NM 87504-2088

☐ AMENDED REPORT

WELL LOCATION AND ACREAGE DEDICATION PLAT

| | | |
|-----------------------|---|--|
| API Number | Pool Code 43329 | Pool Name MALJAMAR-GRAYBURG, SAN ANDRES |
| Property Code 5314 | Property Name PUCKETT "B" | Well Number 36 |
| OGRID No. 25111 | Operator Name W. A. & E. R. HUDSON, INC. | Elevation 3858 |

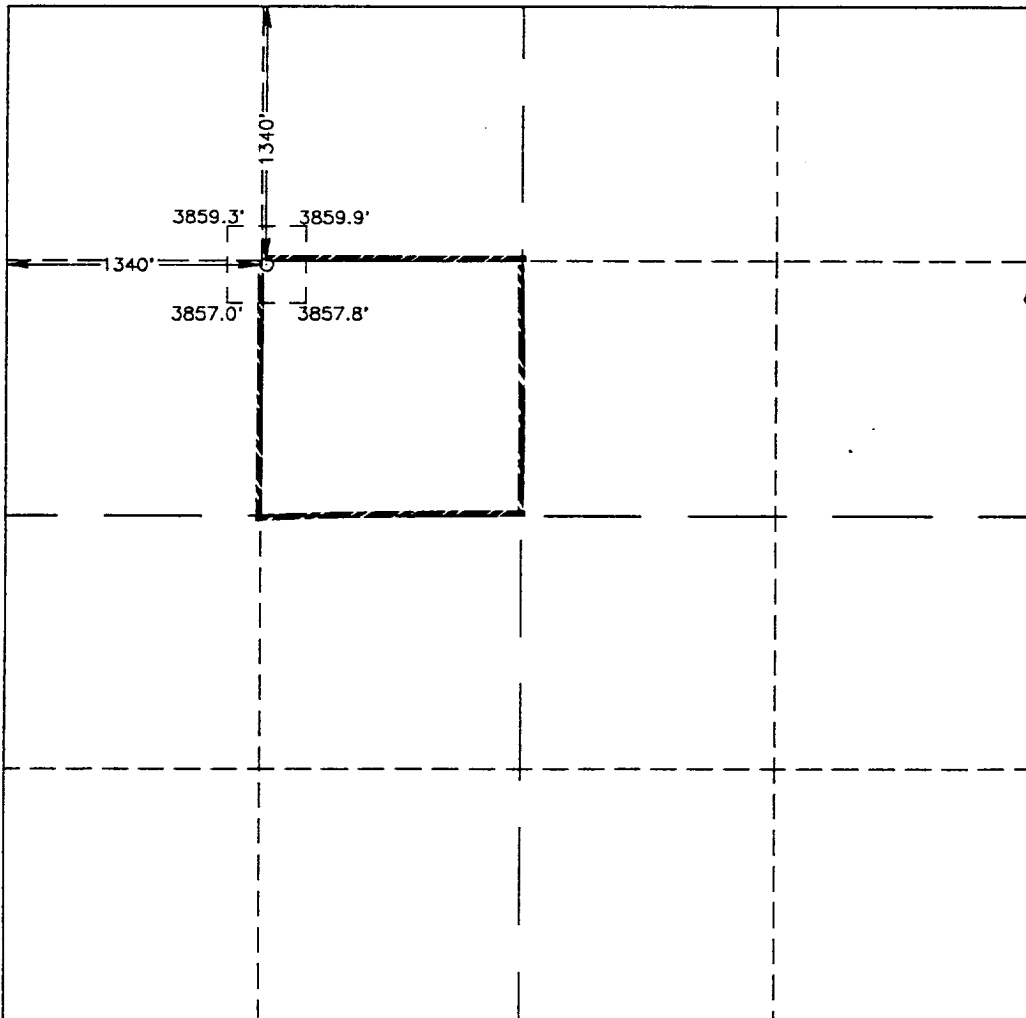
Surface Location

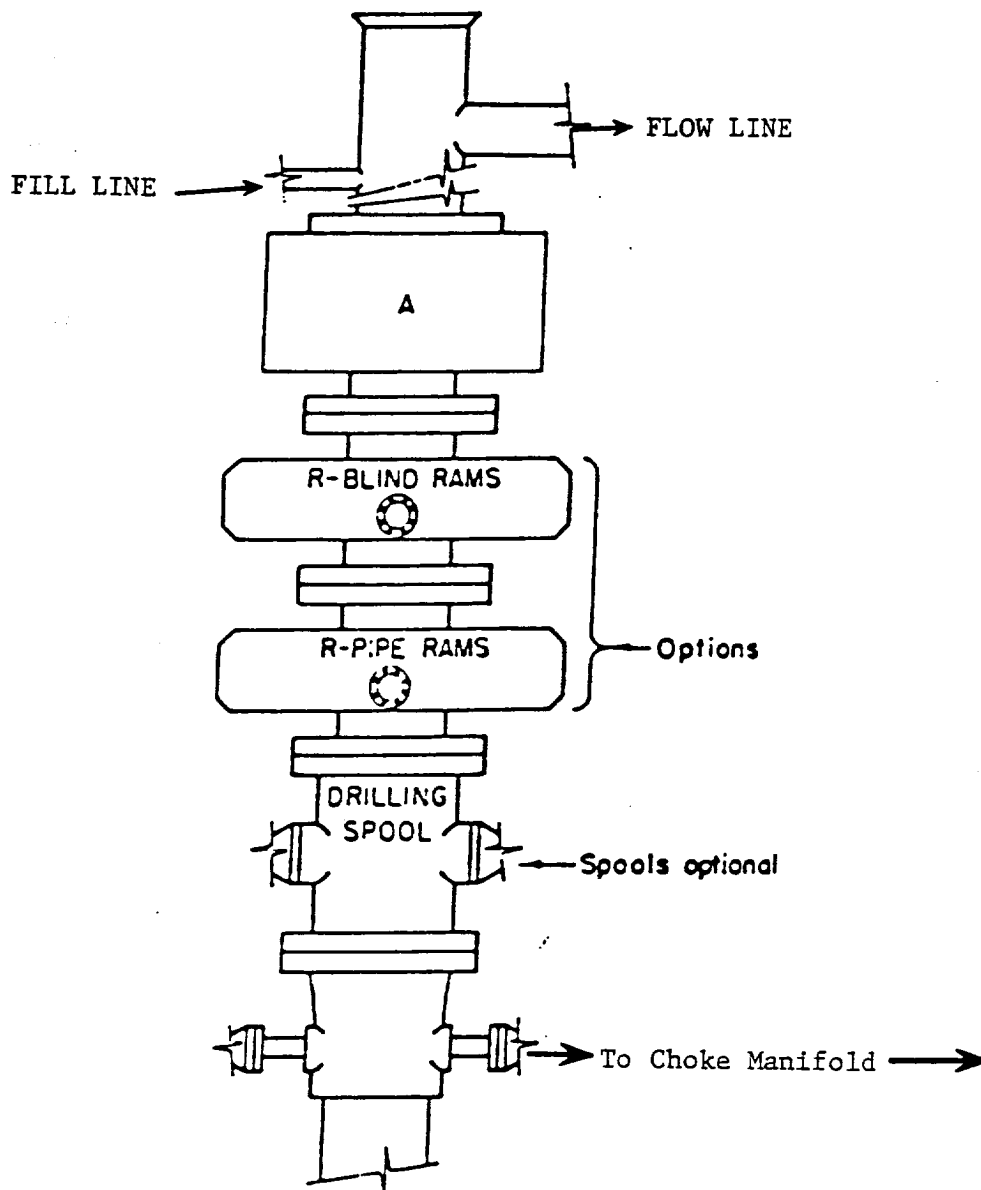
| | | | | | | | | | |
|---------------|---------|----------|-------|---------|---------------|------------------|---------------|----------------|--------|
| UL or lot No. | Section | Township | Range | Lot Idn | Feet from the | North/South line | Feet from the | East/West line | County |
| F | 25 | 17 S | 31 E | | 1340 | NORTH | 1340 | WEST | EDDY |

Bottom Hole Location If Different From Surface

| | | | | | | | | | |
|-----------------------|-----------------|--------------------|-----------|---------|---------------|------------------|---------------|----------------|--------|
| UL or lot No. | Section | Township | Range | Lot Idn | Feet from the | North/South line | Feet from the | East/West line | County |
| | | | | | | | | | |
| Dedicated Acres 40 | Joint or Infill | Consolidation Code | Order No. | | | | | | |

NO ALLOWABLE WILL BE ASSIGNED TO THIS COMPLETION UNTIL ALL INTERESTS HAVE BEEN CONSOLIDATED
OR A NON-STANDARD UNIT HAS BEEN APPROVED BY THE DIVISION

| | |
|---|---|
|  | <p>OPERATOR CERTIFICATION</p> <p>I hereby certify the the information contained herein is true and complete to the best of my knowledge and belief.</p> <p><i>Joe T. Janica</i> Signature Joe T. Janica Printed Name Agent Title 12/02/99 Date</p> <p>SURVEYOR CERTIFICATION</p> <p>I hereby certify that the well location shown on this plat was plotted from field notes of actual surveys made by me or under my supervision, and that the same is true and correct to the best of my belief.</p> <p>AUGUST 27, 1999</p> <p>Date Surveyed JLP</p> <p>Signature <i>Ronald E. Edson</i> Professional Surveyor NEW MEXICO 8238 8-31-99 S.W.O. Num. 99-15-0689</p> <p>Certificate No. RONALD E. EDSON, 3239 GARY G. EDSON, 12641 MAGGIE McDONALD, 12185</p> |
|---|---|

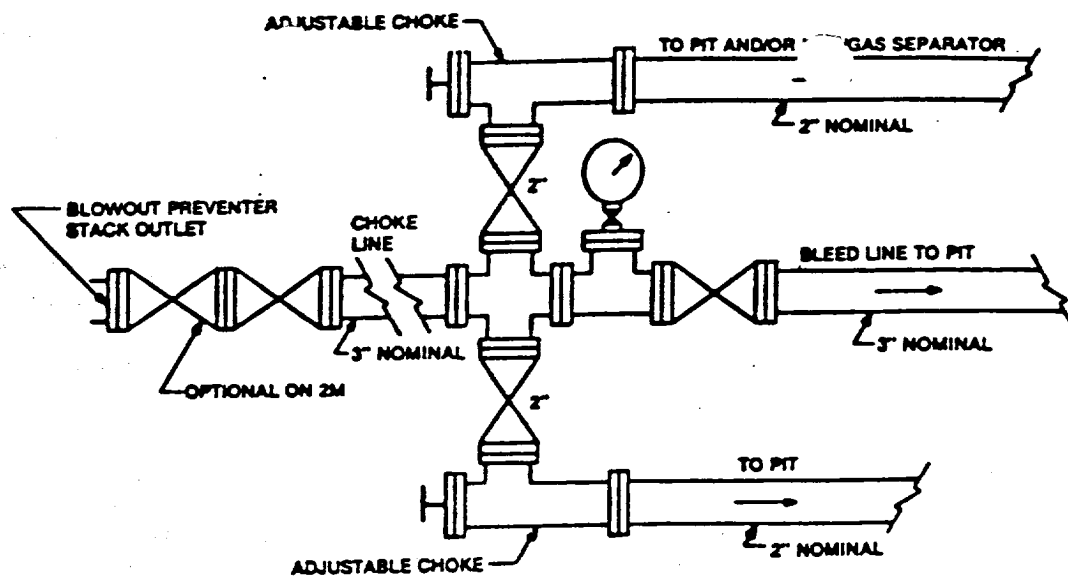


ARRANGEMENT SRRA

900 Series
3000 PSI WP

EXHIBIT "E"
SKETCH OF B.O.P. TO BE USED ON

W.A. & E.D. HUDSON, INC.
PUCKETT "B" # 36
UNIT "F" SECTION 25
T17S-R31E EDDY CO. NM



Typical choke manifold assembly for 3M WP system

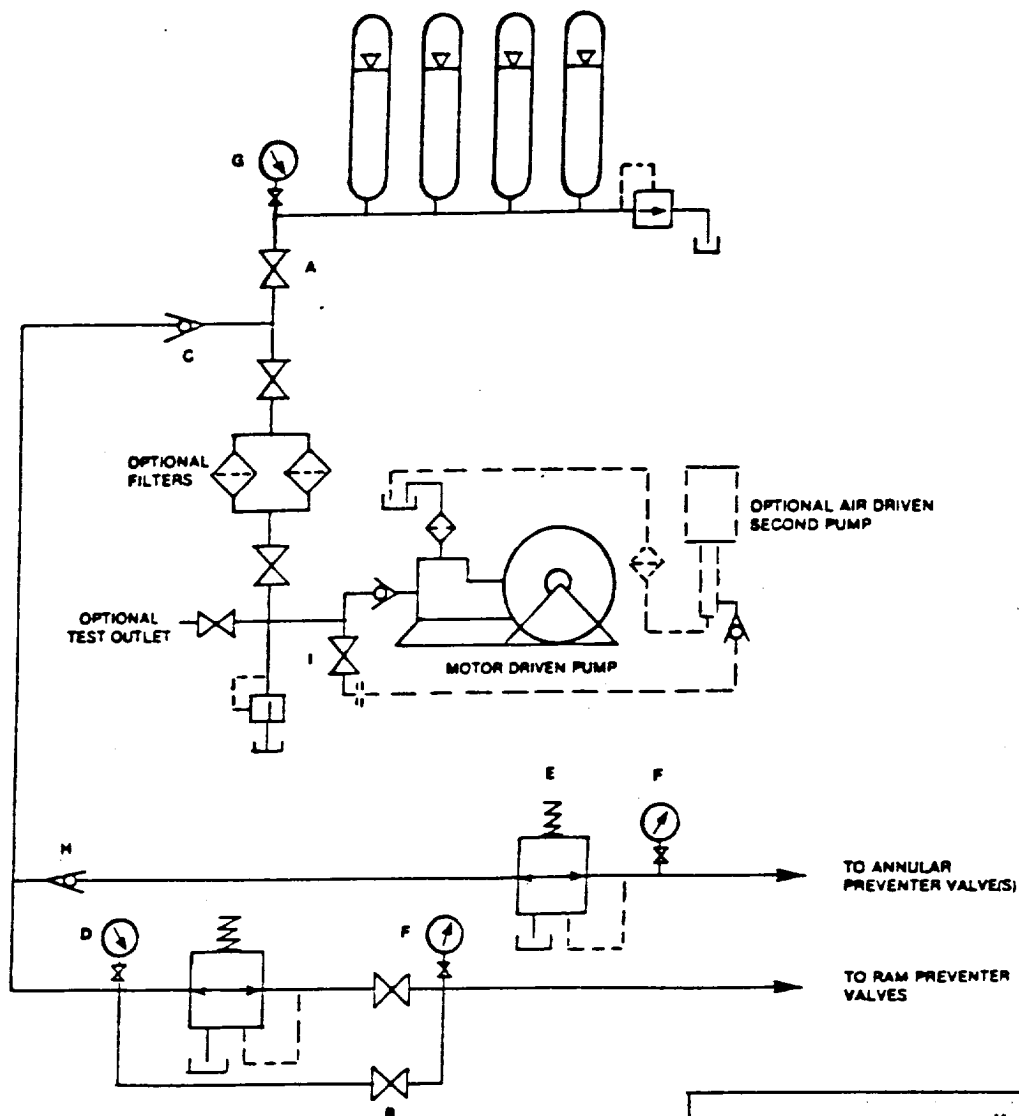


EXHIBIT "E-1"
CHOKE MANIFOLD & CLOSING UNIT

W.A. & E.D. HUDSON, INC.
PUCKETT "B" # 36
UNIT "F" SECTION 25
T17S-R31E EDDY CO. NM