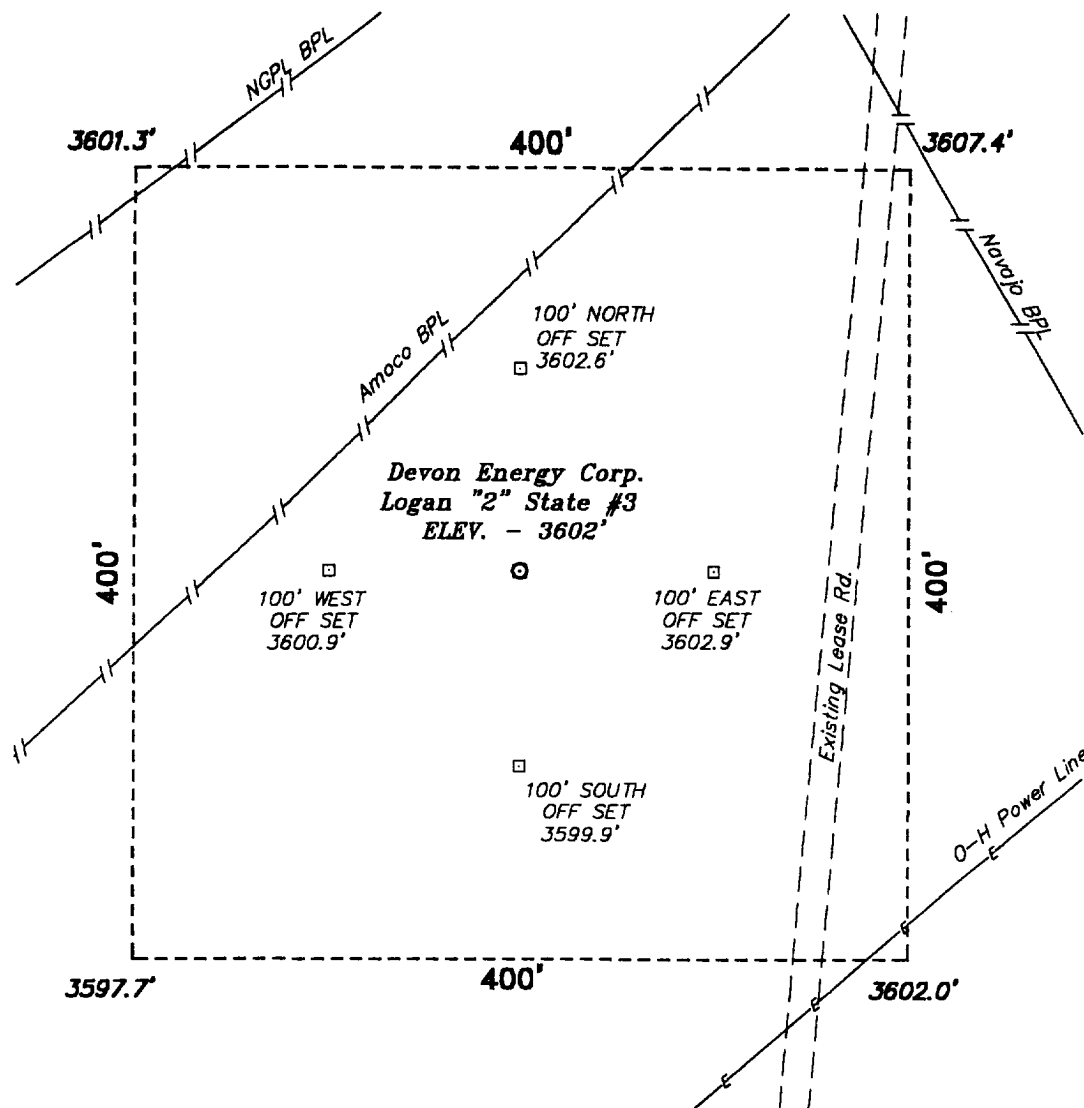
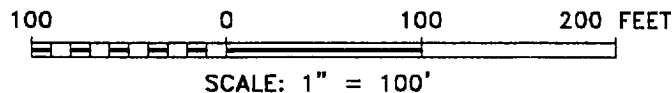


SECTION 2, TOWNHIP 18 SOUTH, RANGE 27 EAST, N.M.P.M.,
EDDY COUNTY, NEW MEXICO.



DIRECTIONS TO LOCATION:

FROM THE US HWY 82 AND THE CO. RD. 225
JUNCTION GO SOUTH ON CO. RD. 225 APPROX. 2
MILES TO CO. RD. 228; THENCE EAST APPROX.
0.25 MILE; THENCE SOUTH ON LEASE ROAD
APPROX. 0.25 MILE TO PROPOSED WELL LOCATION.



BASIN SURVEYS P.O. BOX 1786 - HOBBS, NEW MEXICO

W.O. Number: 9389

Drawn By: K. GOAD

Date: 12-22-99

Disk: KJG #122 - 9389A.DWG

Devon Energy Corp.

REF: Logan "2" State No. 3 / Well Pad Topo

THE LOGAN "2" STATE No. 3 LOCATED 474' FROM THE
NORTH LINE AND 1650' FROM THE EAST LINE OF
SECTION 2, TOWNSHIP 18 SOUTH, RANGE 27 EAST,
N.M.P.M., EDDY COUNTY, NEW MEXICO.

Survey Date: 12-22-99

Sheet 1 of 1 Sheets