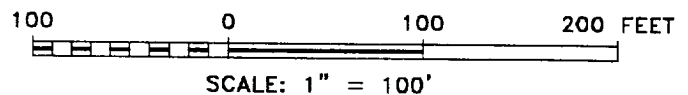
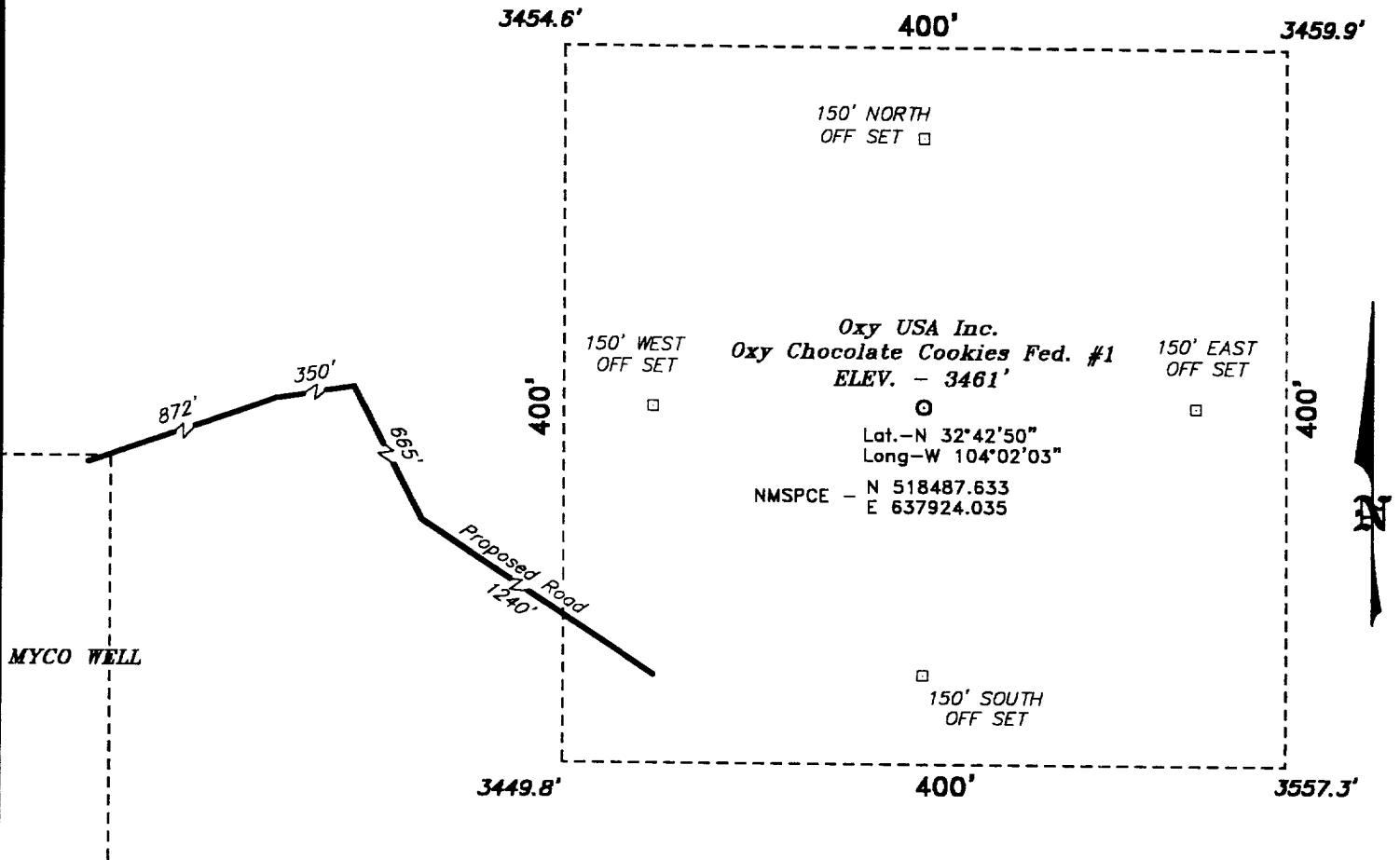


**SECTION 25, TOWNSHIP 18 SOUTH, RANGE 29 EAST, N.M.P.M.,
EDDY COUNTY, NEW MEXICO.**



Directions to Location:

FROM JUNCTION US HWY 82 & STATE HWY 360, GO
SOUTHEAST ON STATE HWY 360 APPROX. 8.5 MILES
TO A POINT WHICH LIES 750 FEET FROM THE
SOUTHWEST CORNER OF THE PROPOSED WELL
LOCATION.

BASIN SURVEYS P.O. BOX 1786 - HOBBS, NEW MEXICO

W.O. Number: 9452 Drawn By: **K. GOAD**

Date: 12-21-99 Disk: KJG #122 - 9452A.DWG

Oxy USA Inc.

REF: Oxy Chocolate Cookies Fed. No. 1 / Well Pad Topo

THE OXY CHOCOLATE COOKIES FED. No. 1 LOCATED 910' FROM
THE SOUTH LINE AND 860' FROM THE WEST LINE OF
SECTION 25, TOWNSHIP 18 SOUTH, RANGE 29 EAST,
N.M.P.M., EDDY COUNTY, NEW MEXICO.

Survey Date: 12-20-99 Sheet 1 of 1 Sheets