

District I
PO Box 1980, Hobbs, NM 88241-1980

District II
811 South First, Artesia, NM 88210

District III
1000 Rio Brazos Rd., Aztec, NM 87410

District IV
2040 South Pacheco, Santa Fe, NM 87505

State of New Mexico
Energy, Minerals & Natural Resources Department

OIL CONSERVATION DIVISION

2040 South Pacheco
Santa Fe, NM 87505

Form C-101

Revised October 18, 1994

Instructions on back

Submit to Appropriate District Office

Fee Lease - 6 Copies

Fee Lease - 5 Copies

AMENDED REPORT

APPLICATION FOR PERMIT TO DRILL, RE-ENTER, DEEPEN, PLUG BACK OR ADD A ZONE

Operator Name and Address Nearburg Producing Company 3300 N A St., Bldg 2, Suite 120 Midland, TX 79705		OGRID Number 015742
		API Number 30-015-31122
Property Code 25857	Property Name Rio Pecos 19	Well No. 1

Surface Location

UL or lot no.	Section	Township	Range	Lot Idn	Feet from the	North/South line	Feet from the	East/West Line	County
E	19	18S	27E		1980	North	660	West	Eddy

Proposed Bottom Hole Location If Different From Surface

UL or lot no.	Section	Township	Range	Lot Idn	Feet from the	North/South line	Feet from the	East/West Line	County
Proposed Pool 1 Red Lake Penn					Proposed Pool 2				

Work Type Code N	Well Type Code G	Cable/Rotary R	Lease Type Code S	Ground Level Elevation 3280
Multiple No	Proposed Depth 9600	Formation Morrow	Contractor UTI #306	Spud Date 05-15-00

Proposed Casing and Cement Program

Hole Size	Casing Size	Casing weight/foot	Setting Depth	Sacks of Cement	Estimated TOC
12-1/4"	8-5/8"	24#	9600'	750 sxs	Circ to surface
7-7/8"	5-1/2"	17#	9600'	500 sxs	
Sufficient to cover all oil, gas, & water bearing zones					

Describe the proposed program. If this application is to DEEPEN or PLUG BACK give the data on the present productive zone and proposed new productive zone. Describe the blowout prevention program, if any. Use additional sheets if necessary.

Propose to drill the well to sufficient depth to evaluate the Morrow formation. After reaching TD, logs will be run and casing set if the evaluation is positive. Perforate, test and stimulate as necessary to establish production.

Acreage dedication is 320 acres; W/2 of Section 19.

Minimum WOC time 8 hrs.

Notify OCD at SPUD & TIME
to witness cementing the
8 5/8" casing.

I hereby certify that the information given above is true and complete to the best of my knowledge and belief.

Signature: *Kim Stewart*
Printed name: Kim Stewart

Title: Regulatory Analyst

Date: 03-24-00

Phone: 915/686-8235

OIL CONSERVATION DIVISION

Approved By: ORIGINAL SIGNED BY TIM W. GUM
DISTRICT IV SUPERVISOR

Title:

Approval Date: MAY 03 2000

Expiration Date:

MAY 03 2001

Conditions of Approval:

Attached: ☐

DISTRICT I
P.O. Box 1980, Hobbs, NM 88241-1980

DISTRICT II
P.O. Drawer DD, Artesia, NM 88211-0719

DISTRICT III
1000 Rio Brazos Rd., Artesia, NM 87410

DISTRICT IV
P.O. Box 2088, Santa Fe, NM 87504-2088

State of New Mexico
Energy, Minerals and Natural Resources Department

OIL CONSERVATION DIVISION
P.O. Box 2088
Santa Fe, New Mexico 87504-2088

Form C-102
Revised February 10, 1994
Submit to Appropriate District Office
State Lease - 4 Copies
Fee Lease - 3 Copies

☐ AMENDED REPORT

WELL LOCATION AND ACREAGE DEDICATION PLAT

API Number	Pool Code	Pool Name
		Red Lake Penn
Property Code	Property Name	Well Number
	RIO PECOS "19"	1
OGRID No.	Operator Name	Elevation
015742	NEARBURG PRODUCING COMPANY	3280

Surface Location

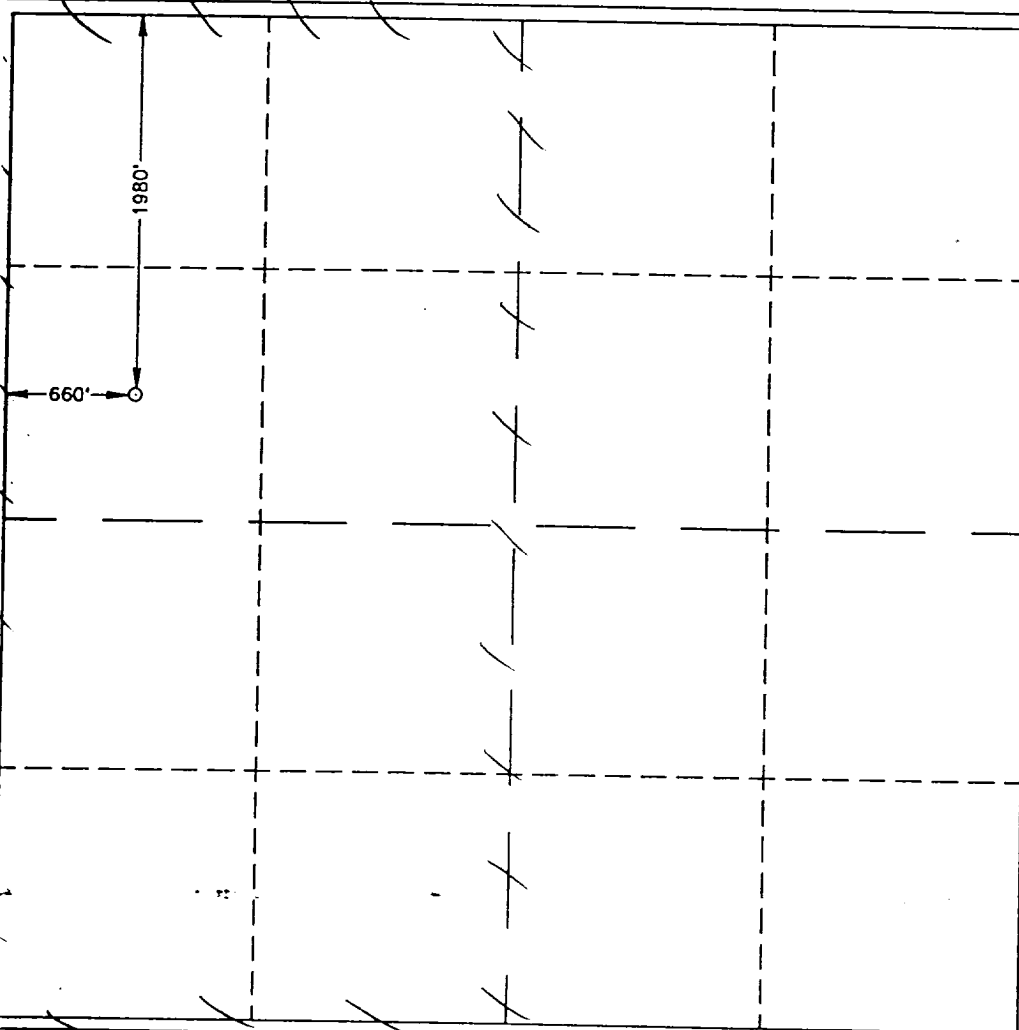
UL or lot No.	Section	Township	Range	Lot Idn	Feet from the	North/South line	Feet from the	East/West line	County
E	19	18 S	27 E		1980	NORTH	660	WEST	EDDY

Bottom Hole Location If Different From Surface

UL or lot No.	Section	Township	Range	Lot Idn	Feet from the	North/South line	Feet from the	East/West line	County

Dedicated Acres	Joint or Infill	Consolidation Code	Order No.
320	N		

NO ALLOWABLE WILL BE ASSIGNED TO THIS COMPLETION UNTIL ALL INTERESTS HAVE BEEN CONSOLIDATED
OR A NON-STANDARD UNIT HAS BEEN APPROVED BY THE DIVISION



OPERATOR CERTIFICATION

I hereby certify the the information
contained herein is true and complete to the
best of my knowledge and belief.

Kim Stewart
Signature

Kim Stewart
Printed Name

Regulatory Analyst
Title

March 16, 2000
Date

SURVEYOR CERTIFICATION

I hereby certify that the well location shown
on this plat was plotted from field notes of
actual surveys made by me or under my
supervision, and that the same is true and
correct to the best of my belief.

JANUARY 20, 2000

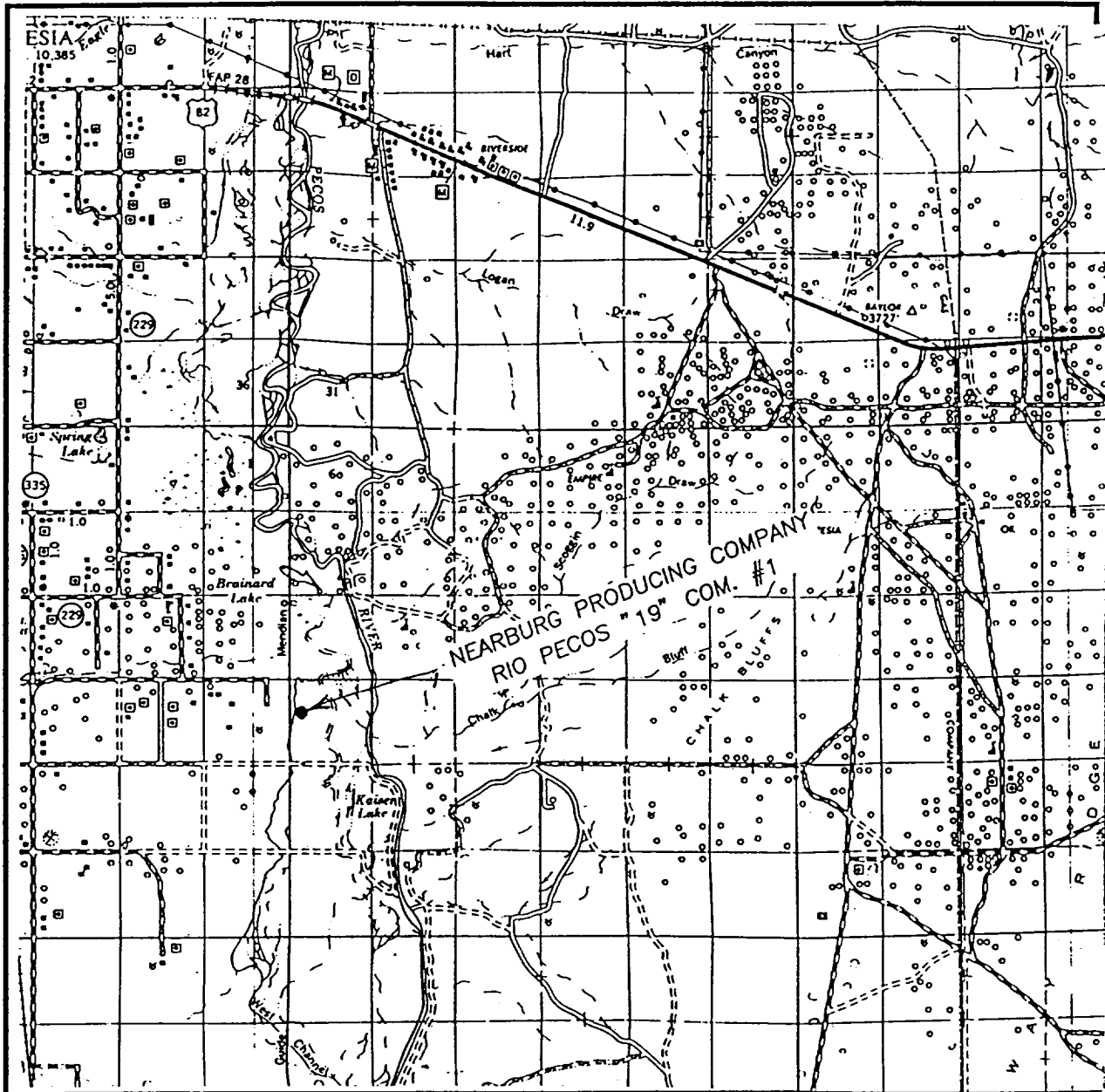
Date Surveyed JLP

Signature & Seal of
Professional Surveyor

Ronald J. Edson
3339
W.Q. Num 00-11-0090

Certificate No. RONALD J. EDSON, 3239
GARY G. EDSON, 12841
MACON McDONALD, 12185

VICINITY MAP



SCALE: 1" = 2 MILES

SEC. 19 TWP. 18-S RGE. 27-E

SURVEY N.M.P.M.

COUNTY EDDY

DESCRIPTION 1980' FNL & 660' FWL

ELEVATION 3280

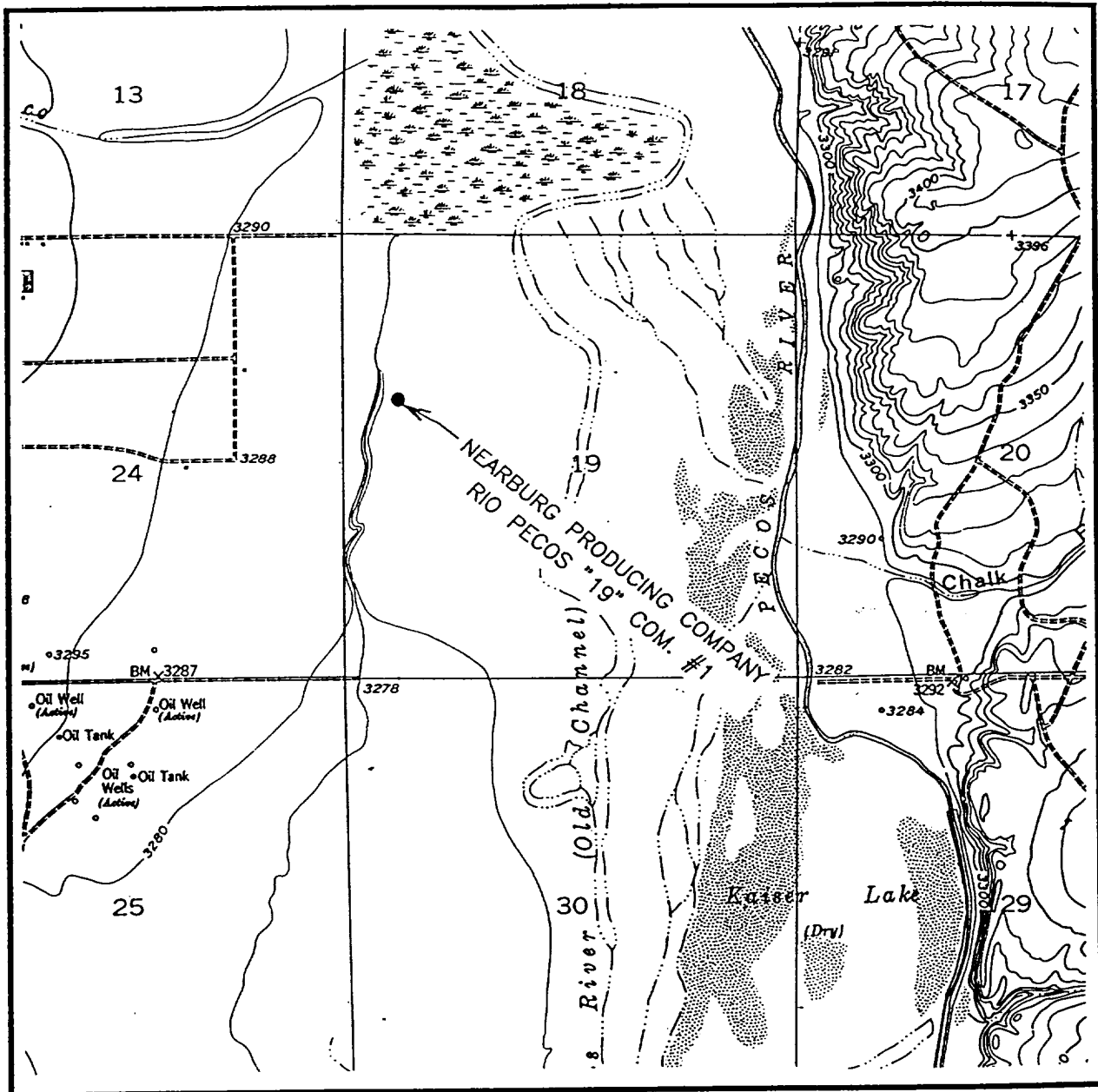
OPERATOR NEARBURG PRODUCING COMPANY

LEASE RIO PECOS "19" COM.

**JOHN WEST SURVEYING
HOBBS, NEW MEXICO**

(505) 393-3117

LOCATION VERIFICATION MAP



SCALE: 1" = 2000'

CONTOUR INTERVAL - 10'

SEC. 19 TWP. 18-S RGE. 27-E

SURVEY N.M.P.M.

COUNTY EDDY

DESCRIPTION 1980' FNL & 660' FWL

ELEVATION 3280

OPERATOR NEARBURG PRODUCING COMPANY

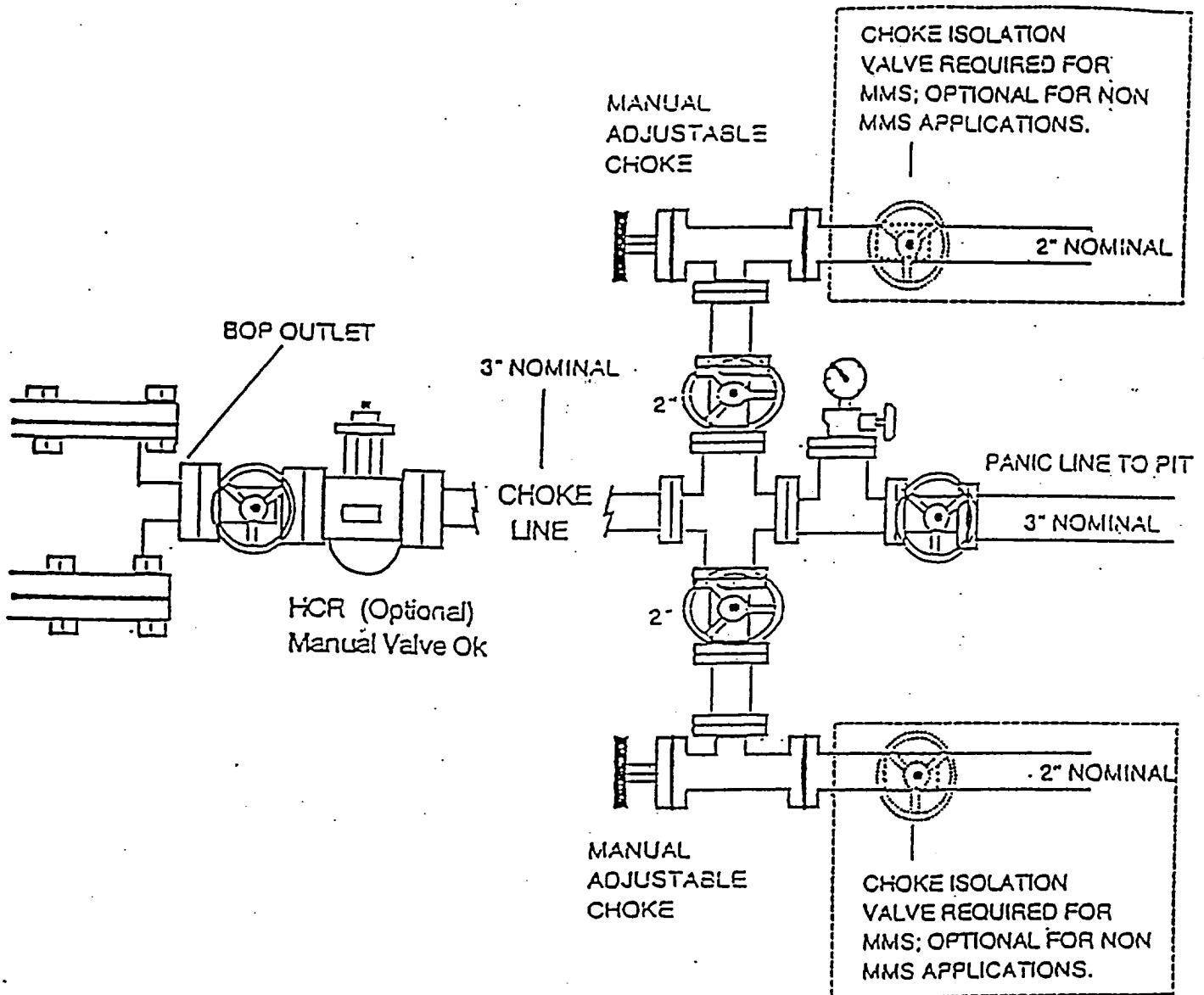
LEASE RIO PECOS "19" COM.

U.S.G.S. TOPOGRAPHIC MAP

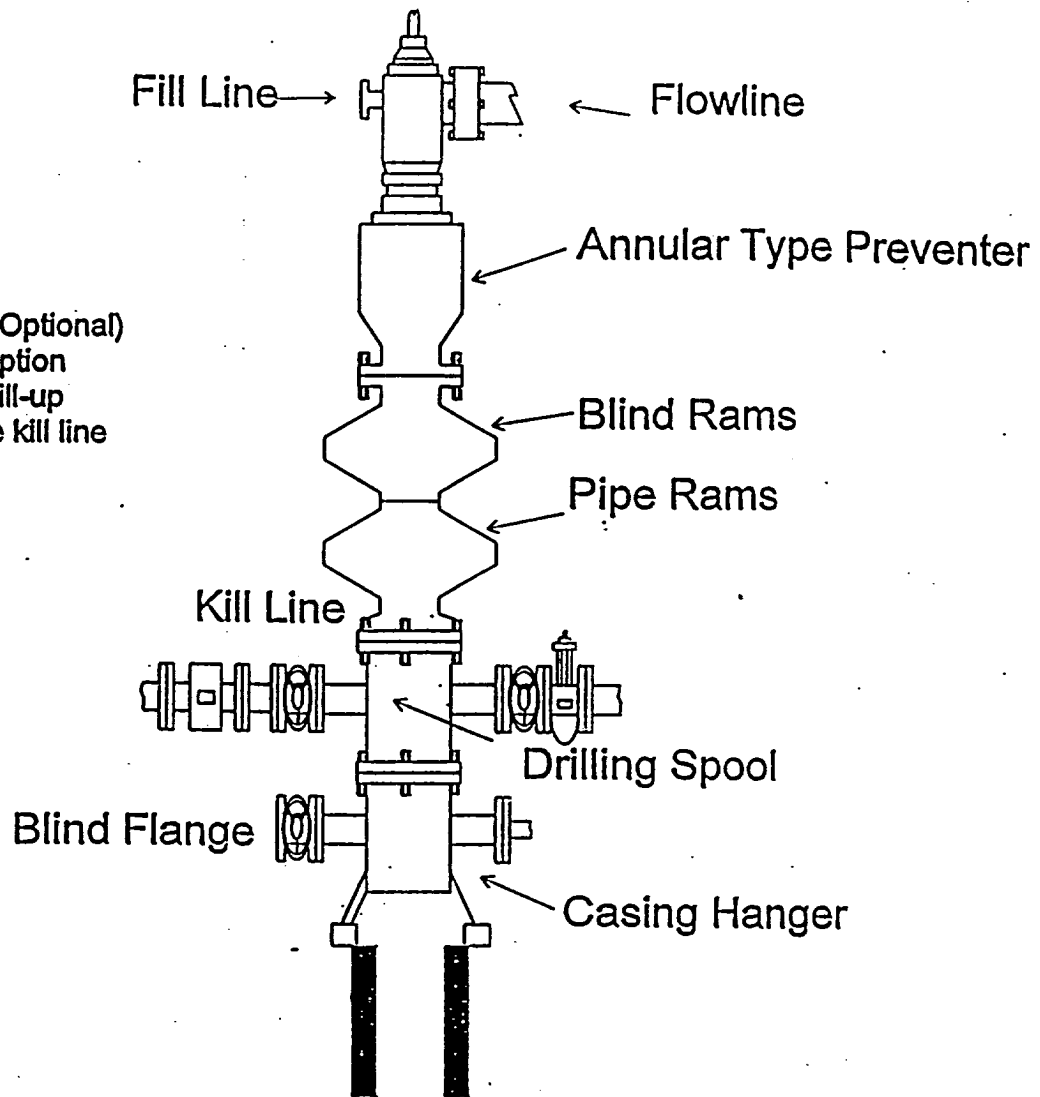
1:250,000 NAD 83

JOHN WEST SURVEYING
HOBBS, NEW MEXICO
(505) 393-3117

NEARBURG PRODUCING COMPANY
CHOKE MANIFOLD
5M SERVICE



NEARBURG PRODUCING COMPANY
BOPE SCHEMATIC



Rotating Head (Optional)
Drilling Nipple option
must include a fill-up
line. Do not use kill line
for fill up.

1500 Series