

District I
1625 N. French Dr., Hobbs, NM 88240
District II
811 South First, Artesia, NM 88210
District III
1000 Rio Brazos Road, Aztec, NM 87410
District IV
2040 South Pacheco, Santa Fe, NM 87505

State of New Mexico
Energy Minerals and Natural Resources

Oil Conservation Division
2040 South Pacheco
Santa Fe, NM 87505

Form C-101
Revised March 17, 1999

Submit to appropriate District Office
State Lease - 6 Copies
Fee Lease - 5 Copies

☐ AMENDED REPORT

APPLICATION FOR PERMIT TO DRILL, RE-ENTER, DEEPEN, PLUGBACK, OR ADD A ZONE

¹ Operator Name and Address OXY USA Inc. P.O. Box 50250 Midland, TX 79710-0250		² OGRID Number 16696
		³ API Number 30-015- 31132
⁴ Property Code 25863	⁵ Property Name OXY Remuda State	⁶ Well No. 1

⁷ Surface Location

UL or lot no.	Section	Township	Range	Lot Idn	Feet from the	North/South line	Feet from the	East/West line	County
K	16	18S	29E		1650	South	1980	West	Eddy

⁸ Proposed Bottom Hole Location If Different From Surface

UL or lot no.	Section	Township	Range	Lot Idn	Feet from the	North/South line	Feet from the	East/West line	County
⁹ Proposed Pool 1 South Empire Morrow					¹⁰ Proposed Pool 2				

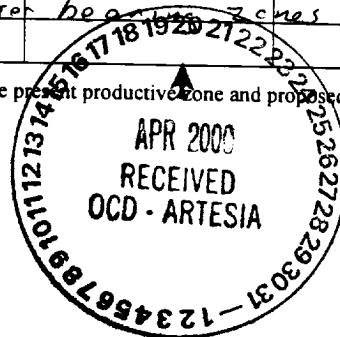
¹¹ Work Type Code N	¹² Well Type Code G	¹³ Cable/Rotary R	¹⁴ Lease Type Code S LG-4524	¹⁵ Ground Level Elevation 3550'
¹⁶ Multiple No	¹⁷ Proposed Depth 11300'	¹⁸ Formation Morrow	¹⁹ Contractor UTI	²⁰ Spud Date 6/1/00

Minimum WOC time / 8 hrs. ²¹ Proposed Casing and Cement Program

Hole Size	Casing Size	Casing weight/foot	Setting Depth	Sacks of Cement	Estimated TOC
17-1/2"	13-3/8"	48#	400'	360	Surface
12-1/4"	9-5/8"	36#	3200'	850	Surface
8-3/4"	5-1/2"	17#	11300'	775	Surface
Sufficient to cover all oil, gas, water bearing zones B6A					

22 Describe the proposed program. If this application is to DEEPEN or PLUG BACK, give the data on the present productive zone and proposed new productive zone. Describe the blowout prevention program, if any. Use additional sheets if necessary.

SEE OTHER SIDE



²³ I hereby certify that the information given above is true and complete to the best of my knowledge and belief.

Signature: *David Stewart*

Printed name: David Stewart

Title: Regulatory Analyst

Date: 4/19/00

Phone: 915-685-5717

OIL CONSERVATION DIVISION

Approved by: ORIGINAL SIGNED BY TIM W. GUM
DISTRICT II SUPERVISOR B6A

Title:

Approval Date: MAY 08 2000

Expiration Date: MAY 08 2001

Conditions of Approval:

Attached ☐

OXY Remuda State #1
1650 FSL 1980 FWL SEC 16 T18S R29E Eddy County, NM
State Lease No.

PROPOSED TD: 11300' TVD

BOP PROGRAM: 0' - 400' None

400' - 3200' 13-5/8" 5M blind and pipe rams with 5M annular preventer.

3200' - 11300' 11" 5M blind pipe rams with 5M annular preventer and rotating head below 8300'.

CASING: Surface: 13-3/8" OD 48# H40 ST&C new casing set at 400'

Intermediate: 9-5/8" OD 36# K55 ST&C new casing from 0-3200'

Production: 5-1/2" OD 17# N80-S95 LT&C new casing from 0-11300'

CEMENT: Surface - Circulate cement with 160sx 35:65 POZ/C with 6% Bentonite + 2% CaCl_2 + .25#/sx Cello-Seal followed by 200sx Cl C with 2% CaCl_2 .

Intermediate - Circulate cement with 650sx 35:65 POZ/C with 6% Bentonite + 2% CaCl_2 + .25#/sx Cello-Seal followed by 200sx Cl C with 2% CaCl_2 .

Production - Cement with 700sx 15:61:11 POZ/C/CSE with .5% FL-52 + .5% FL-25 + 8#/sx Gilsonite followed by 75sx Cl C with .7% FL-25. Estimated top of cement is 8500'.

Note: Cement volumes may need to be adjusted to hole caliper.

MUD: 0 - 400' Fresh water/native mud. Lime for pH control (9-10). Paper for seepage. Wt 8.7-9.2 ppg, Vis 32-34 sec

400' - 3200' Fresh/*Brine water. Lime for pH control (10.0-10.5). Paper for seepage. Wt 8.3-9.0/10.0-10.1ppg, Vis 28-29 sec
*Fresh water will be used unless chlorides in the mud system increases to 20000PPM.

3200' - 8500' Fresh water. Lime for pH control (9-9.5). Paper for seepage. Wt 8.3-8.5 ppg, Vis 28-29 sec

8500' - 10000' Cut brine. Lime for pH control (10-10.5). Wt 9.6-10.0 ppg, Vis 28-29sec

10000' - 11300' Mud up with an Duo Vis/Flo Trol mud system. Wt 9.6-10.0ppg, Vis 32-36sec, WL<10cc

DISTRICT I
P.O. Box 1980, Hobbs, NM 88240

DISTRICT II
P.O. Drawer DD, Artesia, NM 88210

DISTRICT III
1000 Rio Brazos Rd., Aztec, NM 87410

State of New Mexico
Energy, Minerals and Natural Resources Department

Form C-102
Revised February 10, 1994
Instruction on back
Submit to Appropriate District Office
State Lease - 4 Copies
Fee Lease - 3 Copies

OIL CONSERVATION DIVISION

P.O. Box 2088
Santa Fe, New Mexico 87504-2088

☐ AMENDED REPORT

WELL LOCATION AND ACREAGE DEDICATION PLAT

API Number 30-015-	Pool Code	Pool Name South Empire Morrow
Property Code	Property Name Oxy Remuda State	Well Number 1
OGRID No. 16696	Operator Name Oxy USA Inc.	Elevation 3550'

Surface Location

UL or lot No. K	Section 16	Township 18 S	Range 29 E	Lot Idn	Feet from the 1650	North/South line South	Feet from the 1980	East/West line West	County Eddy
--------------------	---------------	------------------	---------------	---------	-----------------------	---------------------------	-----------------------	------------------------	----------------

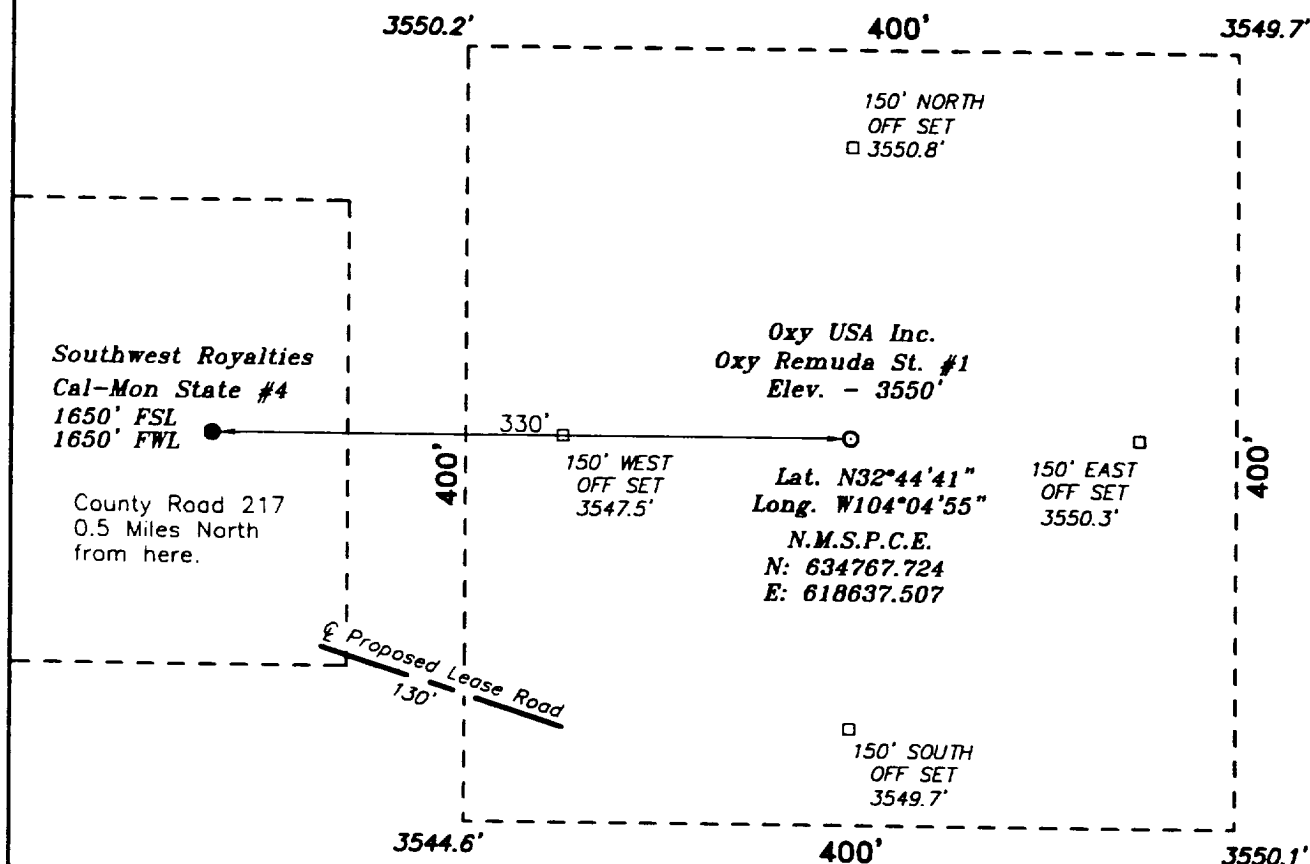
Bottom Hole Location If Different From Surface

UL or lot No.	Section	Township	Range	Lot Idn	Feet from the	North/South line	Feet from the	East/West line	County
Dedicated Acres 320	Joint or Infill N	Consolidation Code	Order No.						

NO ALLOWABLE WILL BE ASSIGNED TO THIS COMPLETION UNTIL ALL INTERESTS HAVE BEEN CONSOLIDATED
OR A NON-STANDARD UNIT HAS BEEN APPROVED BY THE DIVISION

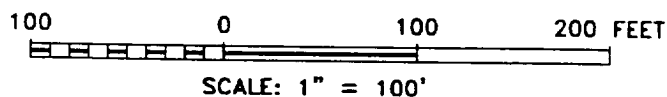
	<p>OPERATOR CERTIFICATION</p> <p>I hereby certify the the information contained herein is true and complete to the best of my knowledge and belief.</p> <p></p> <p>Signature</p> <p>David Stewart</p> <p>Printed Name</p> <p>Regulatory Analyst</p> <p>Title</p> <p>4/19/00</p> <p>Date</p>
	<p>SURVEYOR CERTIFICATION</p> <p>I hereby certify that the well location shown on this plat was plotted from field notes of actual surveys made by me or under my supervision and that the same is true and correct to the best of my belief.</p> <p></p> <p>Date Surveyed</p> <p>Signature & Seal of Professional Surveyor</p> <p>W.B. No. 928766</p> <p>Certificate No. Gary L. Jones 7977</p> <p>BASIN SURVEYS</p>

**SECTION 16, TOWNSHIP 18 SOUTH, RANGE 29 EAST, N.M.P.M.,
EDDY COUNTY, NEW MEXICO.**



Directions

From the City of Loco Hills take County road 217 (Haggerman Cutoff)
7 1/2 miles Southwest to a caliche lease road going South. Go South
on Caliche lease road 1/2 mile to the Southwest Royalties Cal-Mon
State #4 and then 130' East to Proposed Location.



Oxy USA Inc.

REF: Oxy Remuda State No. 1 / Well Pad Topo

THE OXY REMUDA STATE No. 1 LOCATED 1650' FROM
THE SOUTH LINE AND 1980' FROM THE WEST LINE OF
SECTION 16, TOWNSHIP 18 SOUTH, RANGE 29 EAST,
N.M.P.M., EDDY COUNTY, NEW MEXICO.

Basin Surveys P.O. BOX 1786 - HOBBS, NEW MEXICO

W.O. Number: 9226

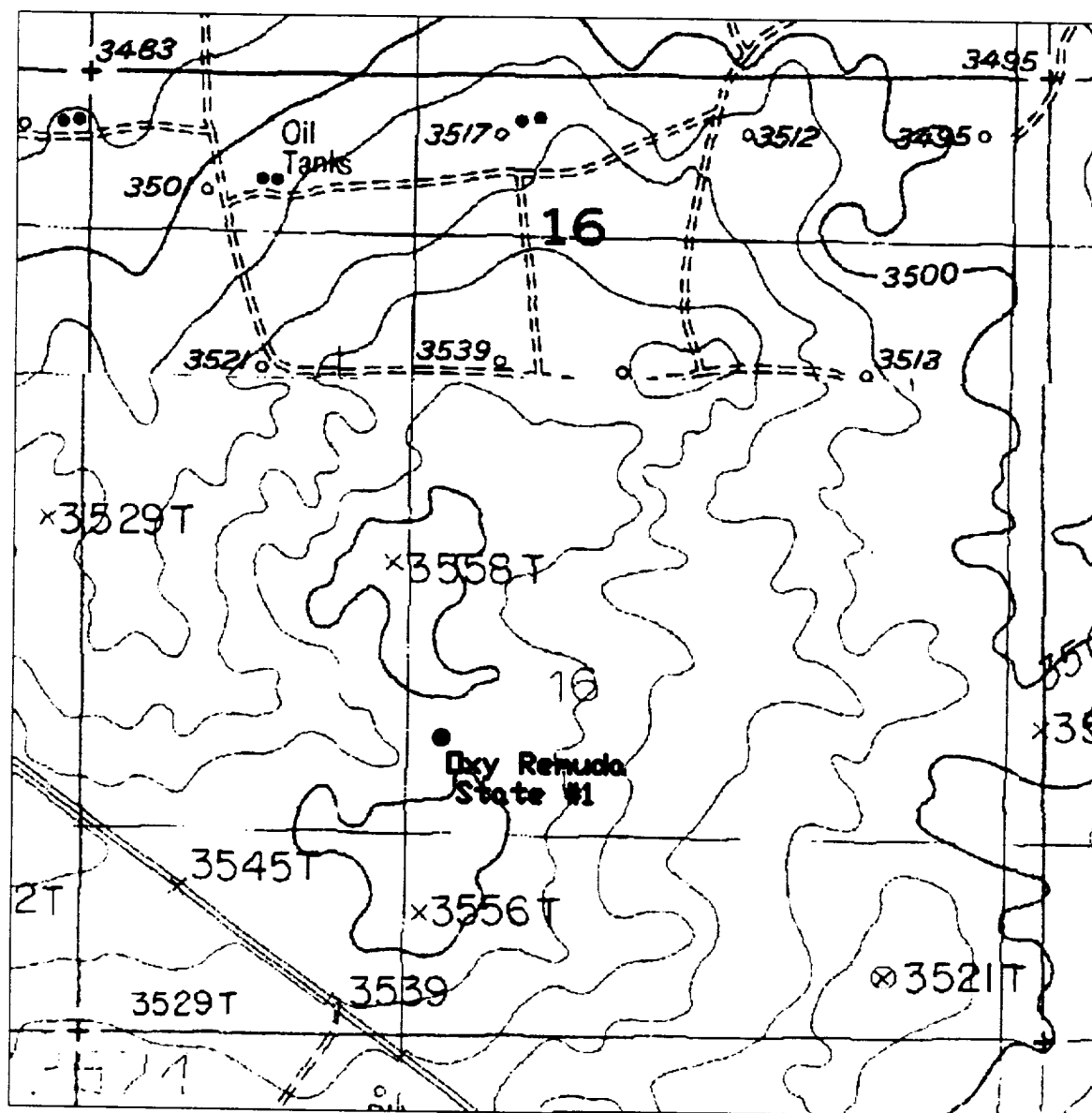
Drawn By: S.C. NICHOLS

Date: 06-29-99

Disk: SCN #104 - 9226AA.DWG

Survey Date: 06-24-99

Sheet 1 of 1 Sheets



Oxy Remuda State No. 1

Located at 1650' FSL and 1980' FWL
 Section 16, Township 18 South, Range 29 East,
 N.M.P.M., Eddy County, New Mexico.

**basin
surveys**
 focused on excellence
 in the oilfield

P.O. Box 1786
 1120 N. West County Rd.
 Hobbs, New Mexico 88241
 (505) 393-7316 - Office
 (505) 392-3074 - Fax
basinsurveys.com

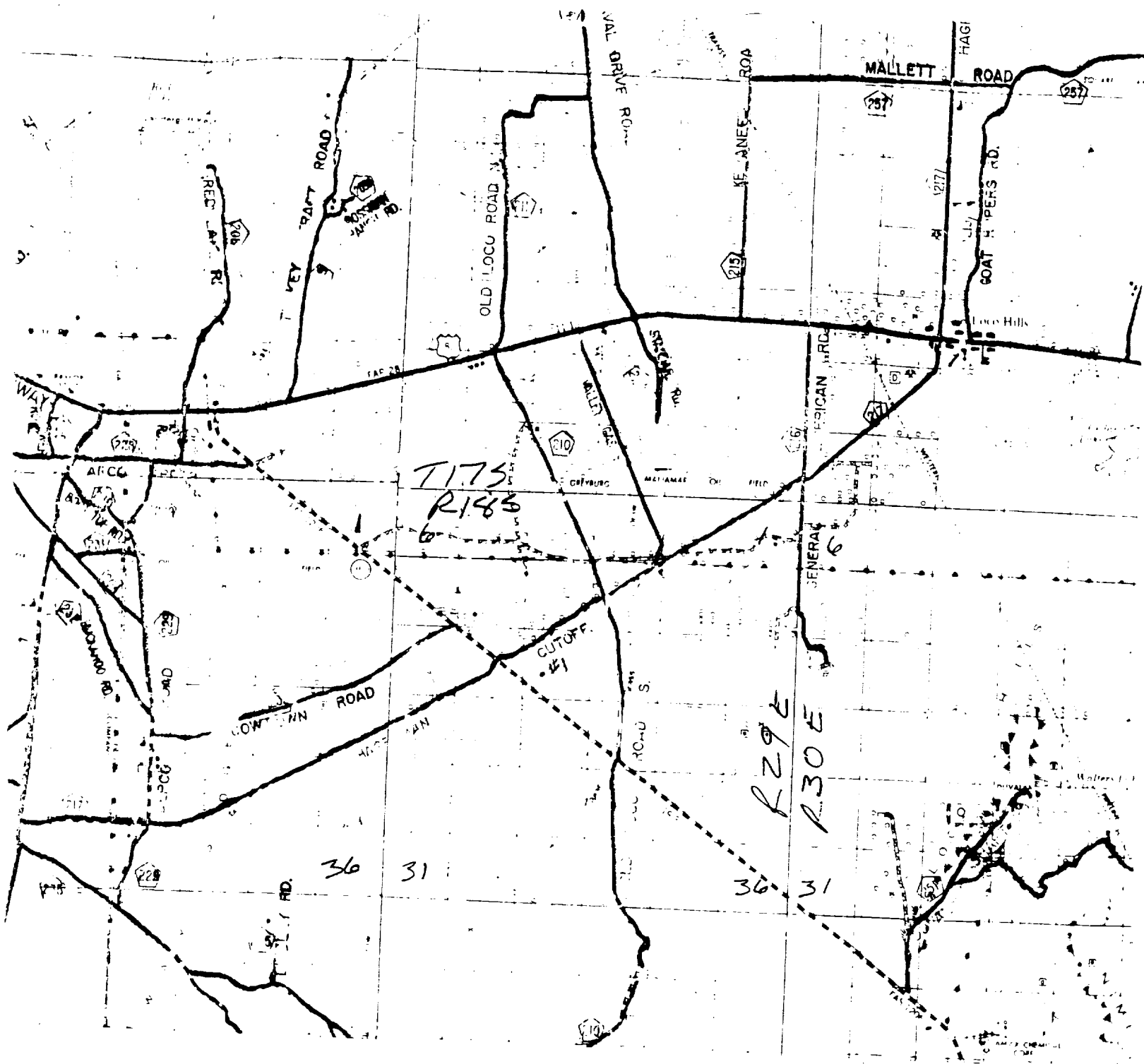
W.O. Number: OXY9226B - SCN #104

Survey Date: 06-24-99

Scale: 1" = 1000'

Date: 06-29-99

Oxy USA Inc.



Oxy USA Inc.
 Oxy Remuda State No. 1
 1650' FSL & 1980' FWL
 Sec. 16, T-18-S, R-29-E,
 Eddy County, New Mexico.



SCALE: 1"=2 Miles

BASIN SURVEYS

P.O. BOX 1786 - HOBBS, NEW MEXICO

2000' 0 2000' 4000 Feet

W.O. Number: 9226

Drawn By: S.C. Nichols

Survey Date: 06-24-99

Sheet 1 of 1 Sheets

BLOWOUT PREVENTOR SCHEME

EXHIBIT A

Exhibit A.

11" 5000# ram type preventers with one set blind rams and one set pipe rams and a 5000# annular type preventer. A choke manifold and 120 gallon accumulator with floor and remote operating stations and auxiliary power system

