

District I
PO Box 1980, Hobbs, NM 88241-1980

District II
811 South First, Artesia, NM 88210

District III
1000 Rio Brazos Rd., Aztec, NM 87410

District IV
2040 South Pacheco, Santa Fe, NM 87505

State of New Mexico
Energy, Minerals & Natural Resources Department

OIL CONSERVATION DIVISION
2040 South Pacheco
Santa Fe, NM 87505

Form C-101

Revised October 18, 1994

Instructions on back

Submit to Appropriate District Office

State Lease - 6 Copies

Fee Lease - 5 Copies

☐ AMENDED REPORT

APPLICATION FOR PERMIT TO DRILL, RE-ENTER, DEEPEN, PLUG BACK, OR ADD A ZONE

Operator Name and Address Nearburg Producing Company 3300 N A St., Bldg 2, Suite 120 Midland, TX 79705		OGRID Number 015742
Property Code 26068		Property Name Pathfinder 29 State Com
API Number 30-015-31182		Well No. 1

Surface Location

UL or lot no.	Section	Township	Range	Lot Idn	Feet from the	North/South line	Feet from the	East/West Line	County
H	29	18S	28E		1980	North	990	East	Eddy

Proposed Bottom Hole Location If Different From Surface

UL or lot no.	Section	Township	Range	Lot Idn	Feet from the	North/South line	Feet from the	East/West Line	County
Proposed Pool 1 Tooling Track Illinois Camp, Morrow, North (Gas)					Proposed Pool 2				

Work Type Code N	Well Type Code G	Cable/Rotary R	Lease Type Code S	Ground Level Elevation 3568
Multiple No	Proposed Depth 11000	Formation Morrow	Contractor UTI #306	Spud Date 08-01-00

Minimum WOC time **8 hrs.** Proposed Casing and Cement Program

Hole Size	Casing Size	Casing weight/foot	Setting Depth	Sacks of Cement	Estimated TOC
17-1/2"	13-3/8"	48#	400'	300 sxs	Circ to surface
11"	8-5/8"	24# & 32#	2300'	800 sxs	Circ to surface
7-7/8"	5-1/2"	17#	11,000'	500 sxs	Circ to cover prod. csg
Cement to cover all oil, gas, & water bearing zones.					

²²Describe the proposed program. If this application is to DEEPEN or PLUG BACK give the data on the present productive zone and proposed new productive zone. Describe the blowout prevention program, if any. Use additional sheets if necessary.

Propose to drill the well to sufficient depth to evaluate the Morrow formation. After reaching TD, logs will be run and casing set if the evaluation is positive. Perforate, test and stimulate as necessary to establish production.

Acreage dedication is 320 acres; E/2 of Section 29.

²³I hereby certify that the information given above is true and complete to the best of my knowledge and belief.

Signature:

Kim Stewart

Printed name: Kim Stewart

Title: Regulatory Analyst

Date: 06-07-00

Phone: 915/686-8235

OIL CONSERVATION DIVISION

Approved By:

ORIGINAL SIGNED BY TIM W. GUN

BGA

Title: **DISTRICT H SUPERVISOR**

Approval Date:

JUN 12 2000

Expiration Date:

JUN 12 2001

Conditions of Approval:

Attached: ☐

DISTRICT I
P.O. Box 1980, Hobbs, NM 88241-1980

DISTRICT II
P.O. Drawer DD, Artesia, NM 88211-0719

DISTRICT III
1000 Rio Brazos Rd., Aztec, NM 87410

DISTRICT IV
P.O. BOX 2088, SANTA FE, N.M. 87504-2088

State of New Mexico

Energy, Minerals and Natural Resources Department

Form C-102

Revised February 10, 1994

Submit to Appropriate District Office

State Lease - 4 Copies

Fee Lease - 3 Copies

OIL CONSERVATION DIVISION

P.O. Box 2088

Santa Fe, New Mexico 87504-2088

☐ AMENDED REPORT

WELL LOCATION AND ACREAGE DEDICATION PLAT

API Number	Pool Code 78890	Well Name Illinois Camp, Morrow, North (Gas)
Property Code	Property Name PATHFINDER 29 STATE COM	Well Number 1
OGRID No. 15742	Operator Name NEARBURG PRODUCING COMPANY	Elevation 3568

Surface Location

UL or lot No. H	Section 29	Township 18 S	Range 28 E	Lot Idn	Feet from the 1980	North/South line NORTH	Feet from the 990	East/West line EAST	County EDDY
--------------------	---------------	------------------	---------------	---------	-----------------------	---------------------------	----------------------	------------------------	----------------

Bottom Hole Location If Different From Surface

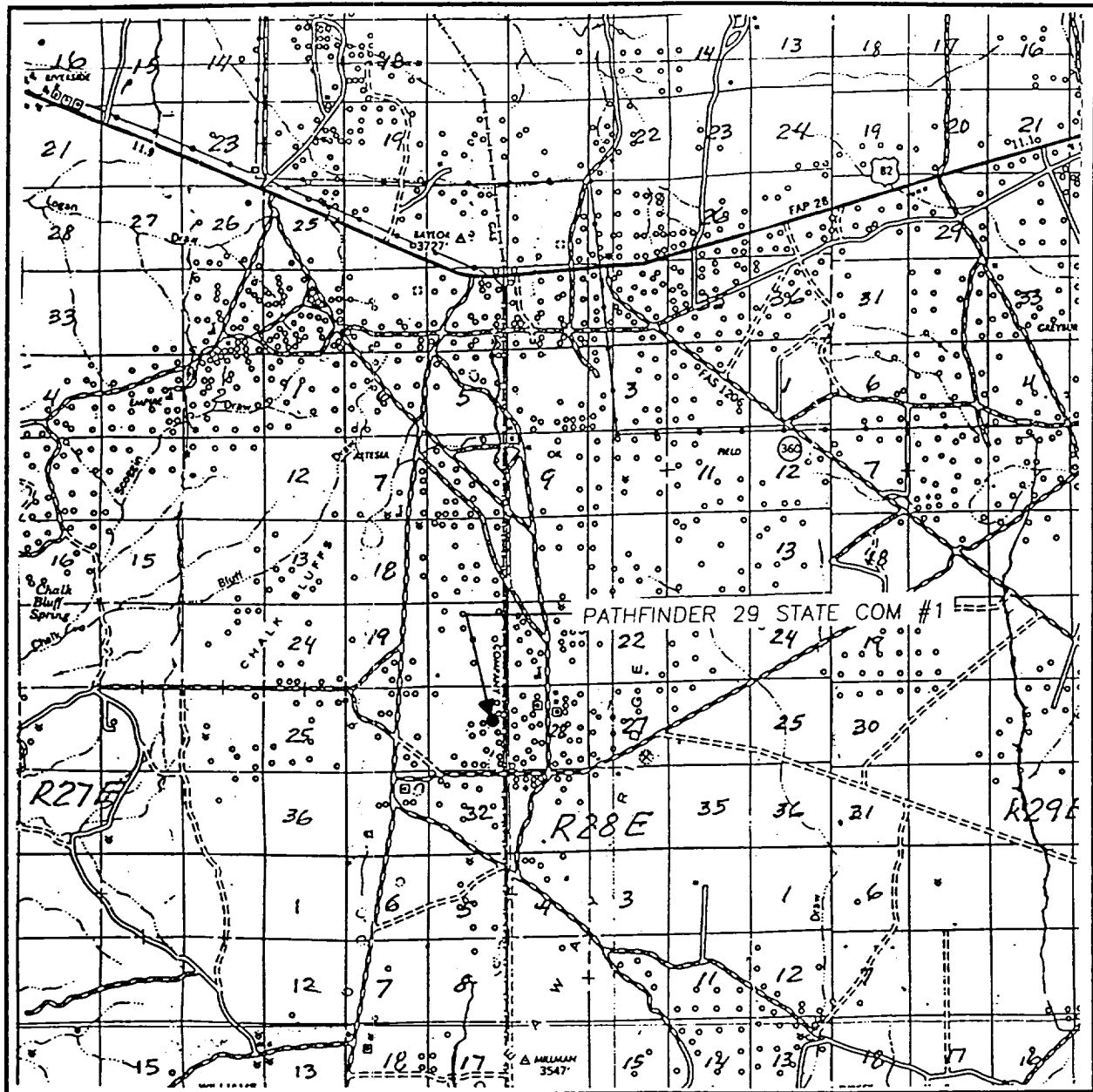
UL or lot No.	Section	Township	Range	Lot Idn	Feet from the	North/South line	Feet from the	East/West line	County
---------------	---------	----------	-------	---------	---------------	------------------	---------------	----------------	--------

Dedicated Acres 320	Joint or Infill N	Consolidation Code	Order No.
------------------------	----------------------	--------------------	-----------

NO ALLOWABLE WILL BE ASSIGNED TO THIS COMPLETION UNTIL ALL INTERESTS HAVE BEEN CONSOLIDATED
OR A NON-STANDARD UNIT HAS BEEN APPROVED BY THE DIVISION

	OPERATOR CERTIFICATION <i>I hereby certify the the information contained herein is true and complete to the best of my knowledge and belief.</i> Signature Kim Stewart Printed Name Regulatory Analyst Title June 7, 2000 Date
	SURVEYOR CERTIFICATION <i>I hereby certify that the well location shown on this plat was plotted from field notes of actual surveys made by me or under my supervision and that the same is true and correct to the best of my belief.</i> MAY 16, 2000 Date Surveyed Signature of Ron E. Eidsen Professional Surveyor NEW MEXICO Ronald E. Eidsen 5/18/00 Certificate No. RONALD E EIDSON 3239 CARY EIDSON 12641 McDONALD 12185

VICINITY MAP



SCALE: 1" = 2 MILES

SEC. 29 TWP. 18-S RGE. 28-E

SURVEY N.M.P.M.

COUNTY EDDY

DESCRIPTION 1980' FNL & 990' FEL

ELEVATION 3568

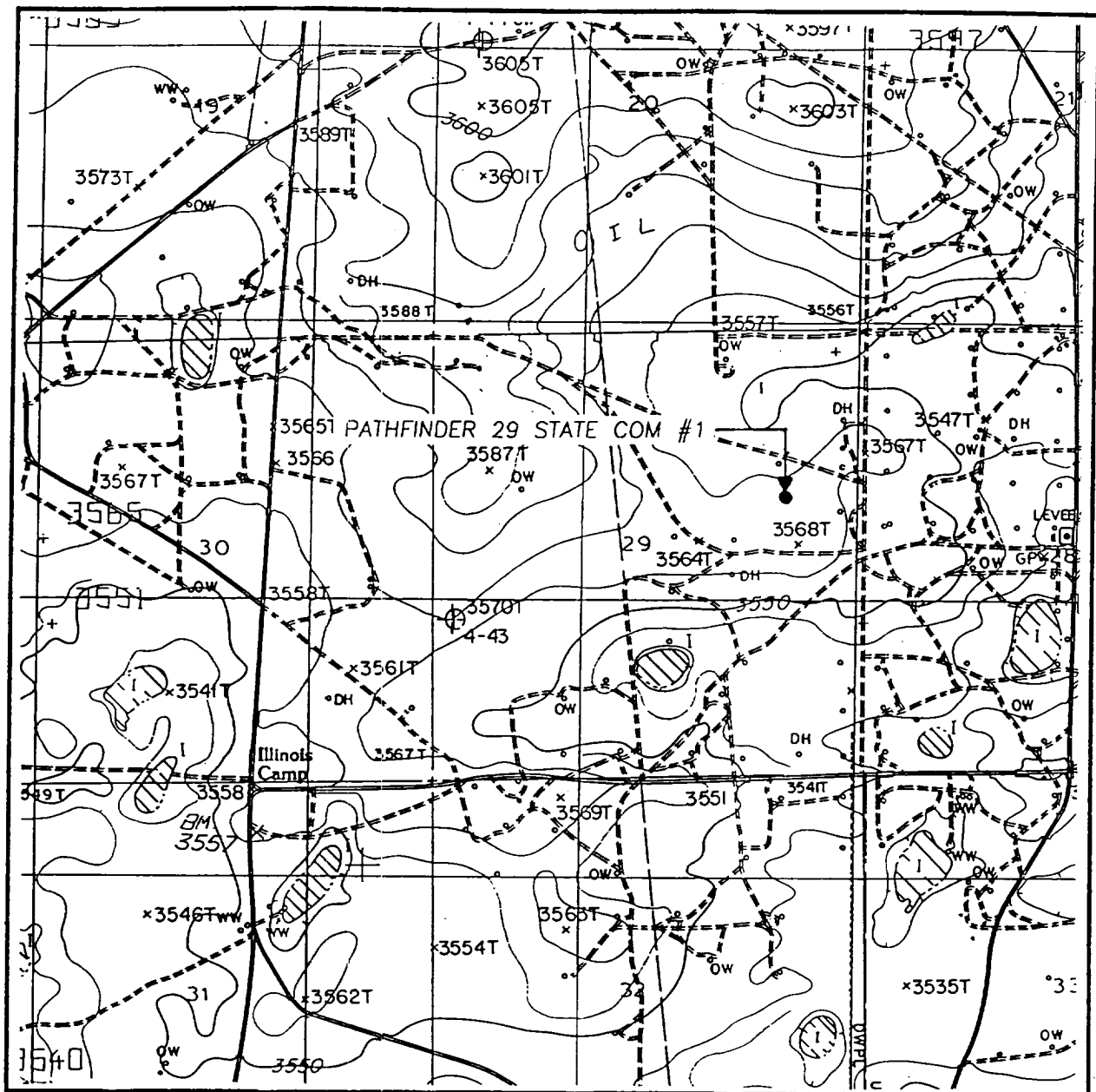
NEARBURG

OPERATOR PRODUCING COMPANY

LEASE PATHFINDER 29 STATE COM

JOHN WEST SURVEYING
HOBBS, NEW MEXICO
(505 393-3117)

LOCATION VERIFICATION MAP



SCALE: 1" = 2000'

CONTOUR INTERVAL:
ILLINOIS CAMP - 10'

SEC. 29 TWP. 18-S RGE. 28-E

SURVEY N.M.P.M.

COUNTY EDDY

DESCRIPTION 1980' FNL & 990' FEL

ELEVATION 3568

NEARBURG
OPERATOR PRODUCING COMPANY

LEASE PATHFINDER 29 STATE COM

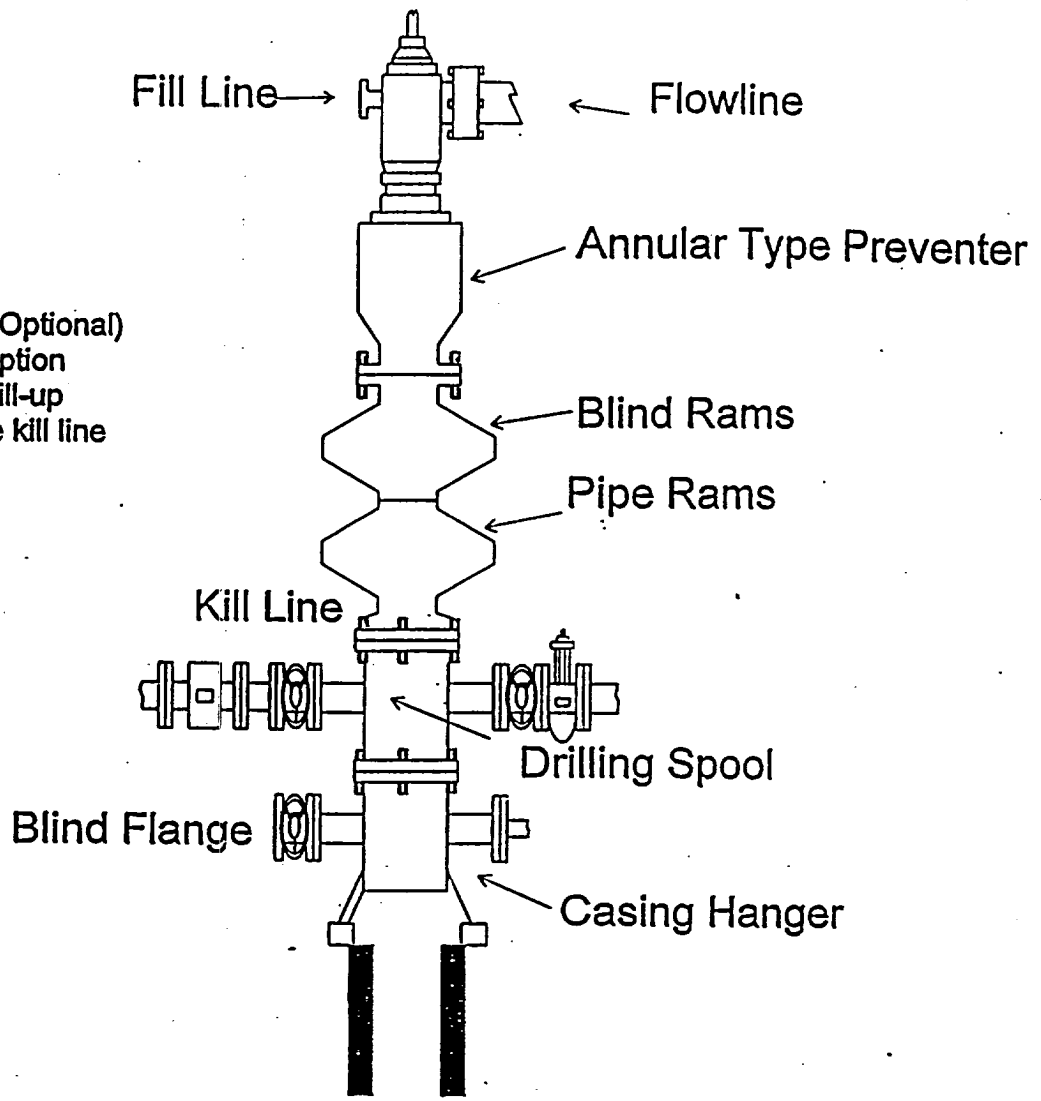
U.S.G.S. TOPOGRAPHIC MAP

ILLINOIS CAMP, N.M.

JOHN WEST SURVEYING
HOBBS, NEW MEXICO
(505 393-3117)

NEARBURG PRODUCING COMPANY
BOPE SCHEMATIC

Rotating Head (Optional)
Drilling Nipple option
must include a fill-up
line. Do not use kill line
for fill up.



1500 Series

ARBURG PRODUCING COMPANY
CHOKE MANIFOLD
5M SERVICE

