

District I  
PO Box 1980, Hobbs, NM 88241-1980

District II  
PO Drawer DD, Artesia, NM 88211-0719

District III  
1000 Rio Brazos Rd., Aztec, NM 87410

District IV  
PO Box 2088, Santa Fe, NM 87504-2088

State of New Mexico  
Energy, Minerals & Natural Resources Department

OIL CONSERVATION DIVISION

PO Box 2088  
Santa Fe, NM 87504-2088

Form C-101  
Revised February 10, 1994  
Instructions on back  
Submit to Appropriate District Office  
State Lease-4 Copies  
Fee Lease-5 Copies

☐ AMENDED REPORT

APPLICATION FOR PERMIT TO DRILL, RE-ENTER, DEEPEN, PLUGBACK, OR ADD A ZONE

Operator Name and Address Harvey E. Yates Company P.O. Box 1933 Roswell, N.M. 88202		OGRID Number 10179
Property Code 12958	Property Name LOCO HILLS WELCH	API Number 30-015-31238
		WELL NO. #5

UL or Lot no.	Section	Township	Range	Lot Idn	Feet from the	North/South line	Feet from the	East/West line	County
L	4	T18S	R29E		1,450'	SOUTH	660'	WEST	EDDY

Proposed Bottom Hole Location If Different From Surface

UL or Lot no.	Section	Township	Range	Lot Idn	Feet from the	North/South line	Feet from the	East/West line	County
Proposed Pool 1					Proposed Pool 2				
EMPIRE SOUTH MORROW									

Work Type Code	Well Type Code	Cable/Rotary	Lease Type Code	Ground Level Elevation
N Multiple	G Proposed Depth	ROTARY Formation	S Contractor	3525 (GR) Spud Date
N	11,250'	MORROW	UTI	ASAP

Minimum WOC time hrs.

Proposed Casing and Cement Program

Hole Size	Casing Size	Casing weight/foot	Setting Depth	Sacks of Cement	Estimated TOC
17 1/2"	13 3/8"	48#	400'	425	CIRC. TO SURFACE
12 1/4"	8 5/8"	32#	3,100'	1200	CIRC. TO SURFACE
7 7/8"	5 1/2"	17#	11,250'	1200	600' ABOVE PAY
Operator to have cement cover all oil, gas, & water bearing zones					

Describe the proposed program. If this application is to DEEPEN or PLUG BACK give the data on the present productive zone and proposed new productive zone. Describe the blowout prevention program if any. Use additional sheets if necessary.

MUD PROGRAM

DEPTH TYPE OF MUD  
0-400' FRESH WATER w/ PAPER & SHALE GUARD.  
400-3,100' BRINE WATER w/ PAPER & SHALE GUARD.  
3,100-7,750' FRESH WATER w/ PAPER, SHALE GUARD, N03, 18-20,000 CHLORIDES, & SWEEPS AS NEEDED.  
7,750-11,250' MUD UP W/BARAZAN. 60,000 CHLORIDES, MW-9.2-9.4, VIS-34-36, WL-10-20

PRESSURE CONTROL EQUIPMENT

BOP w/ ANNULAR. ALTHOUGH THE RIG EQUIPMENT IS RATED 3M, THIS WELL WILL BE RATED 2M.  
UPPER AND LOWER KELLY COCK. ROTATING HEAD PRIOR TO WOLFCAMP.

OTHER

THIS IS A POSSIBLE H2S AREA. AN H2S COMPLIANCE PACKAGE WILL BE UTILIZED.

I hereby certify that the information given above is true and complete to the best of my knowledge and belief.

Signature: Bob Williams  
Printed name: Bob Williams  
Title: Drilling Superintendent

Date: July 5, 2000  
Phone: 505-623-6601

OIL CONSERVATION DIVISION

Approved by: ORIGINAL SIGNED BY TIM W. GUM  
DISTRICT II SUPERVISOR  
Title: BGA  
Approval Date: JUL 05 2000  
Expiration Date: JUL 05 2001  
Conditions of Approval: Plugging of Loco Hills Welch #2  
Attached: in Morrow to produce.

DISTRICT I  
P.O. Box 1990, Hobbs, NM 88241-1990

DISTRICT II  
P.O. Drawer DD, Artesia, NM 88211-0719

DISTRICT III  
1000 Rio Braxos Rd., Aztec, NM 87410

DISTRICT IV  
P.O. BOX 2088, SANTA FE, N.M. 87504-2088

State of New Mexico  
Energy, Minerals and Natural Resources Department

Form C-102  
Revised February 10, 1994  
Submit to Appropriate District Office  
State Lease - 4 Copies  
Fee Lease - 3 Copies

OIL CONSERVATION DIVISION

P.O. Box 2088  
Santa Fe, New Mexico 87504-2088

☐ AMENDED REPORT

WELL LOCATION AND ACREAGE DEDICATION PLAT

API Number	Pool Code	Pool Name
Property Code	Property Name LOCO HILLS WELCH	Well Number 5
OGRID No.	Operator Name HARVEY E. YATES COMPANY	Elevation 3525

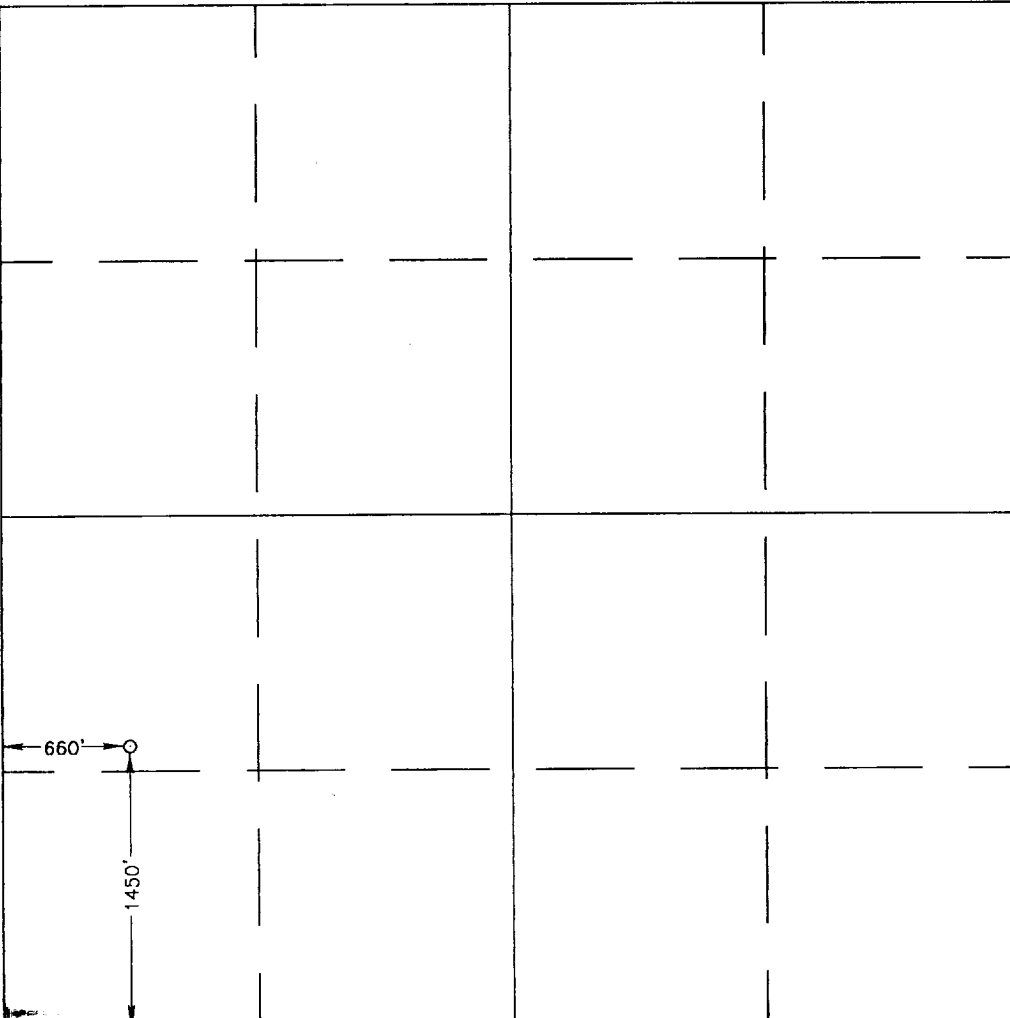
Surface Location

UL or lot No.	Section	Township	Range	Lot Idn	Feet from the	North/South line	Feet from the	East/West line	County
L	4	18 S	29 E		1450	SOUTH	660	WEST	EDDY

Bottom Hole Location If Different From Surface

UL or lot No.	Section	Township	Range	Lot Idn	Feet from the	North/South line	Feet from the	East/West line	County
Dedicated Acres 32c	Joint or Infill	Consolidation Code	Order No.						

NO ALLOWABLE WILL BE ASSIGNED TO THIS COMPLETION UNTIL ALL INTERESTS HAVE BEEN CONSOLIDATED  
OR A NON-STANDARD UNIT HAS BEEN APPROVED BY THE DIVISION

	<b>OPERATOR CERTIFICATION</b> <i>I hereby certify that the information contained herein is true and complete to the best of my knowledge and belief.</i>  Bob Williams Signature BOB WILLIAMS Printed Name DRUG. SUPT. Title 7-5-00 Date	
	<b>SURVEYOR CERTIFICATION</b> <i>I hereby certify that the well location shown on this plat was plotted from field notes of actual surveys made by me or under my supervision, and that the same is true and correct to the best of my belief.</i>  JUNE 27, 2000 Date Surveyed LMP Signature & Seal of Professional Surveyor Barry B. Edson 6/29/2000 00-41-0815 Certificate No. RONALD J. EIDSON 3239 GARY EIDSON 12641 MACON McDONALD 12185	

DISTRICT I  
P.O. Box 1980, Hobbs, NM 88241-1980

DISTRICT II  
P.O. Drawer DD, Artesia, NM 88211-0719

DISTRICT III  
1000 Rio Brazos Rd., Artesia, NM 87410

DISTRICT IV  
P.O. BOX 2088, SANTA FE, N.M. 87504-2088

State of New Mexico  
Energy, Minerals and Natural Resources Department

Form C-102  
Revised February 10, 1994  
Submit to Appropriate District Office  
State Lease - 4 Copies  
Fee Lease - 3 Copies

OIL CONSERVATION DIVISION  
P.O. Box 2088  
Santa Fe, New Mexico 87504-2088

☐ AMENDED REPORT

WELL LOCATION AND ACREAGE DEDICATION PLAT

API Number	Pool Code	Pool Name
Property Code	Property Name LOCO HILLS WELCH	Well Number 5
OGRID No.	Operator Name HARVEY E. YATES COMPANY	Elevation 3525

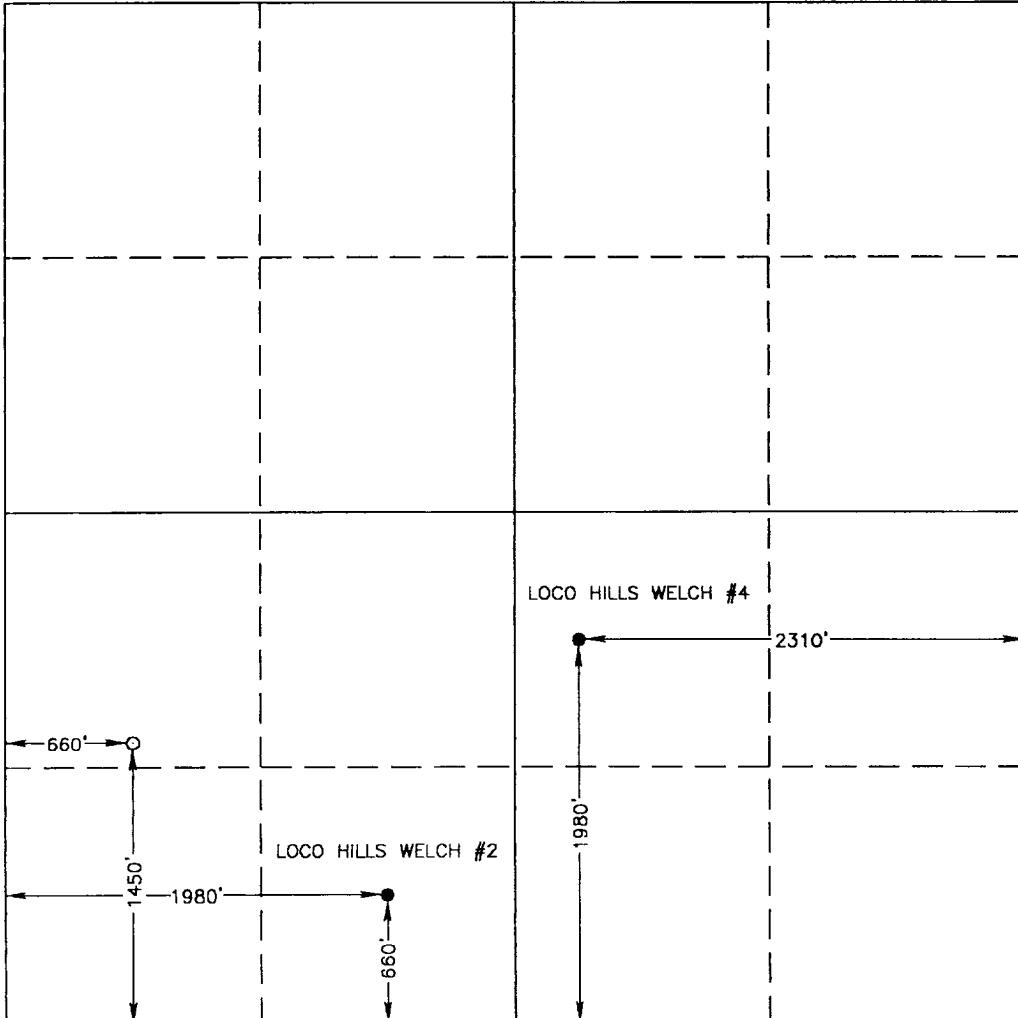
Surface Location

UL or lot No.	Section	Township	Range	Lot Idn	Feet from the	North/South line	Feet from the	East/West line	County
L	4	18 S	29 E		1450	SOUTH	660	WEST	EDDY

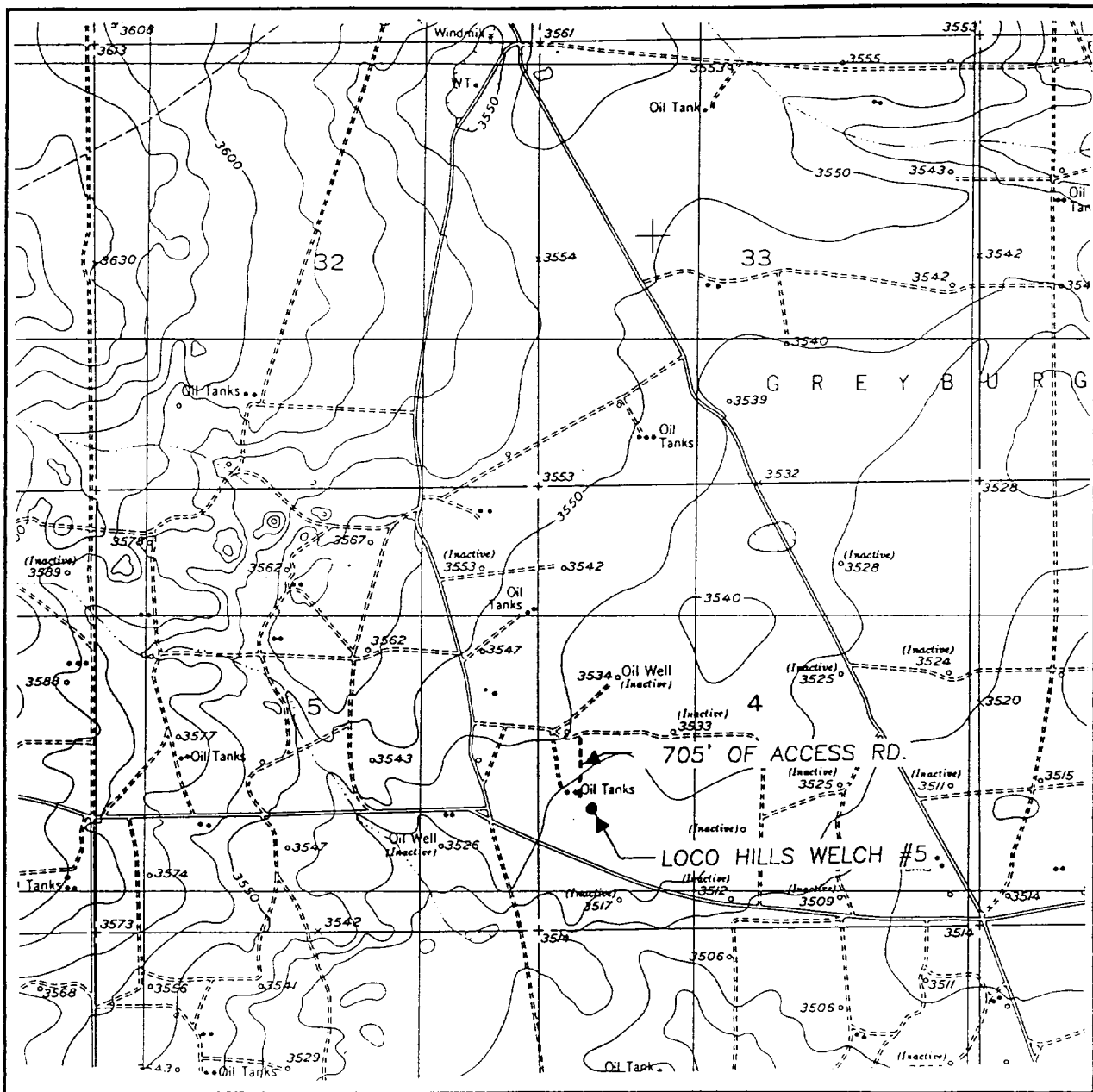
Bottom Hole Location If Different From Surface

UL or lot No.	Section	Township	Range	Lot Idn	Feet from the	North/South line	Feet from the	East/West line	County
Dedicated Acres	Joint or Infill	Consolidation Code	Order No.						

NO ALLOWABLE WILL BE ASSIGNED TO THIS COMPLETION UNTIL ALL INTERESTS HAVE BEEN CONSOLIDATED  
OR A NON-STANDARD UNIT HAS BEEN APPROVED BY THE DIVISION

				<b>OPERATOR CERTIFICATION</b> <i>I hereby certify the the information contained herein is true and complete to the best of my knowledge and belief.</i>  Signature: <u>Bob Williams</u> Printed Name: <u>BOB WILLIAMS</u> Title: <u>DALG. SUPT.</u> Date: <u>7-5-00</u>	
				<b>SURVEYOR CERTIFICATION</b> <i>I hereby certify that the well location shown on this plat was plotted from field notes of actual surveys made by me or under my supervision, and that the same is true and correct to the best of my belief.</i>  JUNE 27, 2000 Date Surveyed: _____ LMP Signature & Seal of Professional Surveyor: <u>Gary E. Eidson 6/29/2000</u> 00-11-0815 Certificate No. RONALD J. EIDSON 3239 GARY EIDSON 12641 MACON McDONALD 12186	

# LOCATION VERIFICATION MAP



SCALE: 1" = 2000'

CONTOUR INTERVAL:  
RED LAKE SE, N.M. - 10'

SEC. 4 TWP. 18-S RGE. 29-E

SURVEY N.M.P.M.

COUNTY EDDY

DESCRIPTION 1450' FSL & 660' FWL

ELEVATION 3525

OPERATOR HARVEY E. YATES COMPANY

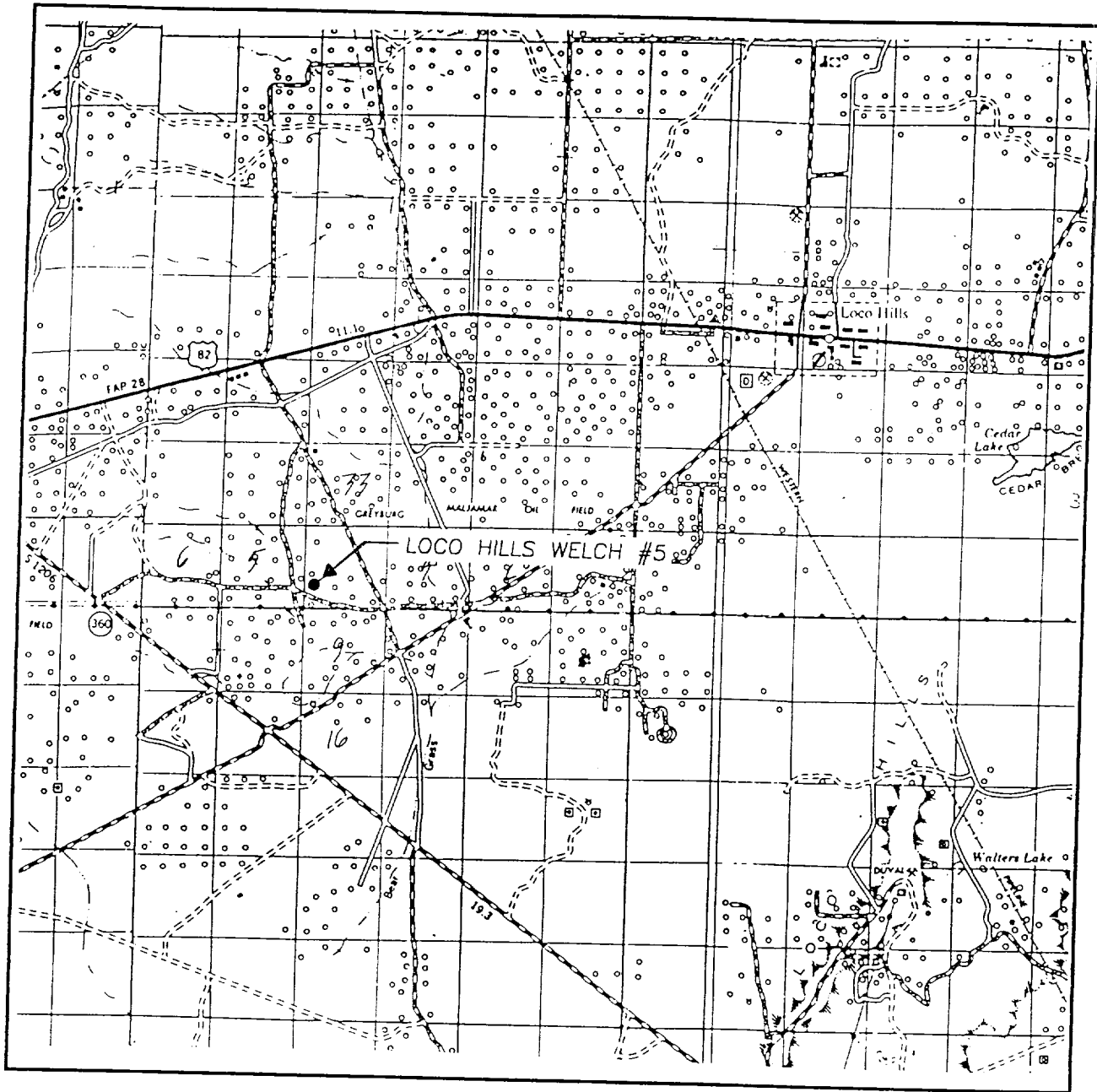
LEASE LOCO HILLS WELCH

U.S.G.S. TOPOGRAPHIC MAP

RED LAKE SE, N.M.

JOHN WEST SURVEYING  
HOBBS, NEW MEXICO  
(505) 393-3117

# VICINITY MAP



SCALE: 1" = 2 MILES

SEC. 4 TWP. 18-S RGE. 29-E

SURVEY N.M.P.M.

COUNTY EDDY

DESCRIPTION 1450' FSL & 660' FWL

ELEVATION 3525

OPERATOR HARVEY E. YATES COMPANY

LEASE LOCO HILLS WELCH

JOHN WEST SURVEYING  
HOBBS, NEW MEXICO  
(505) 393-3117

EXHIBIT "C" BOP STACK

Loco Hills Welch #5  
1,450' FSL & 660' FWL  
Sec 4, T18S, R29E  
Eddy County, NM

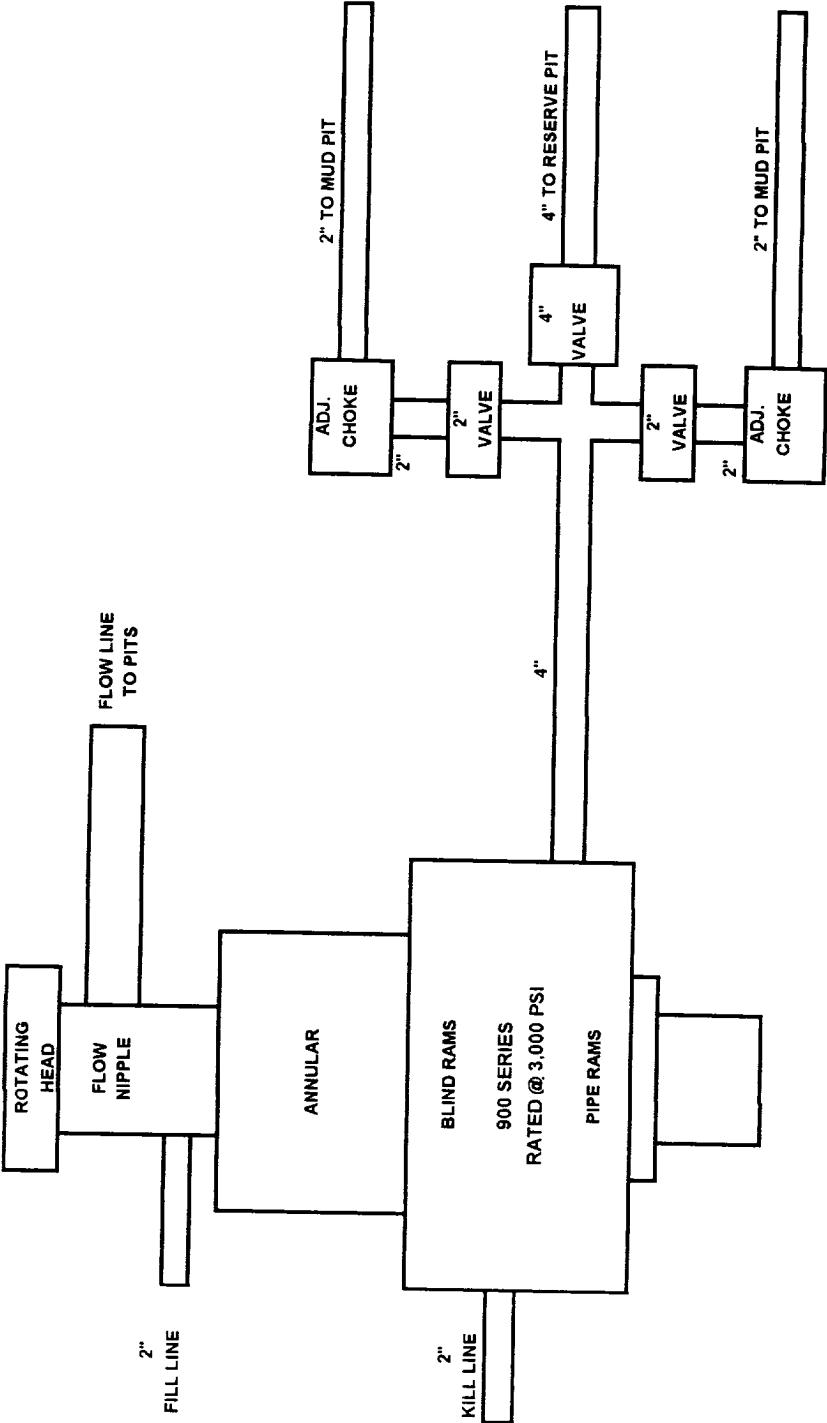


EXHIBIT D

Loco Hills Welch #5  
1,460' FSL & 660' FWL  
Sec 4, T18S, R29E  
Eddy County, NM

