

District I  
1625 N. French Dr., Hobbs, NM 88240  
District II  
811 South First, Artesia, NM 88210  
District III  
1000 Rio Brazos Road, Aztec, NM 87410  
District IV  
2040 South Pacheco, Santa Fe, NM 87505

State of New Mexico  
Energy Minerals and Natural Resources

Form C-101  
Revised March 17, 1999

Oil Conservation Division  
2040 South Pacheco  
Santa Fe, NM 87505

Submit to appropriate District Office  
State Lease - 6 Copies  
Fee Lease - 5 Copies

☐ AMENDED REPORT

APPLICATION FOR PERMIT TO DRILL, RE-ENTER, DEEPEN, PLUGBACK, OR ADD A ZONE

<sup>1</sup> Operator Name and Address OXY USA Inc. P.O. Box 50250 Midland, TX 79710-0250		<sup>2</sup> OGRID Number 16696
		<sup>3</sup> API Number 30-015- 31506
<sup>3</sup> Property Code 27005	<sup>5</sup> Property Name OXY Sweet Corn State	<sup>6</sup> Well No. 1

<sup>7</sup> Surface Location

UL or lot no.	Section	Township	Range	Lot Idn	Feet from the	North/South line	Feet from the	East/West line	County
P	29	18S	25E		660	South	660	East	Eddy

<sup>8</sup> Proposed Bottom Hole Location If Different From Surface

UL or lot no.	Section	Township	Range	Lot Idn	Feet from the	North/South line	Feet from the	East/West line	County

<sup>9</sup> Proposed Pool 1 Penasco Draw Morrow	<sup>10</sup> Proposed Pool 2 82770
---	--

<sup>11</sup> Work Type Code N	<sup>12</sup> Well Type Code G	<sup>13</sup> Cable/Rotary R	<sup>14</sup> Lease Type Code S VB-471-1	<sup>15</sup> Ground Level Elevation 3578'
<sup>16</sup> Multiple No	<sup>17</sup> Proposed Depth 8700'	<sup>18</sup> Formation Morrow	<sup>19</sup> Contractor UTI	<sup>20</sup> Spud Date 12/8/00

<sup>21</sup> Proposed Casing and Cement Program

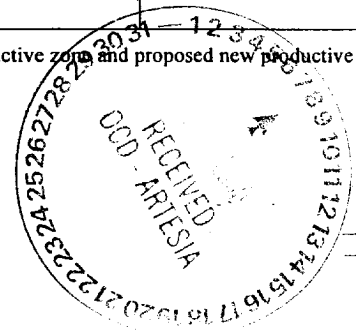
Hole Size	Casing Size	Casing weight/foot	Setting Depth	Sacks of Cement	Estimated TOC
17-1/2"	13-3/8"	48#	400'	360	Circulate
14" 12 1/4"	8-5/8"	32#	1300'	425	Circulate
7-7/8"	4-1/2"	11.6#	8700'	685	5600'

22 Describe the proposed program. If this application is to DEEPEN or PLUG BACK, give the data on the present productive zone and proposed new productive zone. Describe the blowout prevention program, if any. Use additional sheets if necessary.

8 5/8

SEE OTHER SIDE

Operator to notify NMOCD time of spud  
& time to witness casing



23 I hereby certify that the information given above is true and complete to the best of my knowledge and belief.

Signature:

Printed name: David Stewart

Title: Regulatory Analyst

Date: 12/7/00

Phone: 915-685-5717

OIL CONSERVATION DIVISION

Approved by: ORIGINAL SIGNED BY TIM W. GUM  
DISTRICT II SUPERVISOR

Title:

Approval Date: DEC 13 2000

Expiration Date: DEC 13 2001

Conditions of Approval:

Attached ☐

OXY Sweet Corn State #1  
660 FSL 660 FEL P SEC 29 T18S R25E Eddy County, NM  
State Lease No. VB-471-1

PROPOSED TD: 8700' TVD

BOP PROGRAM: 0' - 400' None

400' - 1300' 11" 5M blind and pipe rams with 5M annular preventer.

1300' - 8700' 11" 5M blind pipe rams with 5M annular preventer and rotating head below 6000'.

CASING: Surface: 13-3/8" OD 48# H40 ST&C new casing set at 400'

Intermediate: 8-5/8" OD 32# K55 ST&C new casing from 0-1300'

Production: 4-1/2" OD 11.6# N80 LT&C new casing from 0-8700'

CEMENT: Surface - Circulate cement with 160sx 35:65 POZ/C with 6% Bentonite + 2%  $\text{CaCl}_2$  + .25#/sx Cello-Seal followed by 200sx Cl C with 2%  $\text{CaCl}_2$ .

Intermediate - Circulate cement with 225sx 35:65 POZ/C with 6% Bentonite + 2%  $\text{CaCl}_2$  + .25#/sx Cello-Seal followed by 200sx Cl C with 2%  $\text{CaCl}_2$ .

Production - Cement with 610sx 15:61:11 POZ/C/CSE with .5% FL-52 + .5% FL-25 + 8#/sx Gilsonite followed by 75sx Cl C with .7% FL-25.

Estimated top of cement is 6000'.

Note: Cement volumes may need to be adjusted to hole caliper.

MUD: 0 - 400' Fresh water/native mud. Lime for pH control (9-10). Paper for seepage. Wt 8.7-9.2 ppg, Vis 32-34 sec

400' - 1300' Fresh/\*Brine water. Lime for pH control (10.0-10.5). Paper for seepage. Wt 8.3-9.0/10.0-10.1ppg, Vis 28-29 sec  
\*Fresh water will be used unless chlorides in the mud system increases to 20000ppm.

1300' - 6000' Fresh water. Lime for pH control (9-9.5). Paper for seepage. Wt 8.3-8.5 ppg, Vis 28-29 sec

6000' - 7400' Cut brine. Lime for pH control (10-10.5). Wt 9.6-10.0 ppg, Vis 28-29sec

7400' - 8700' Mud up with an Duo Vis/Flo Trol mud system. Wt 9.6-10.0ppg, Vis 32-36sec, WL<10cc

DISTRICT I  
1625 N. French Dr., Hobbs, NM 88240

DISTRICT II  
811 South First, Artesia, NM 88210

DISTRICT III  
1000 Rio Brazos Rd., Aztec, NM 87410

DISTRICT IV  
2040 South Pacheco, Santa Fe, NM 87505

State of New Mexico  
Energy, Minerals and Natural Resources Department

Form C-102  
Revised March 17, 1999

Submit to Appropriate District Office  
State Lease - 4 Copies  
Fee Lease - 3 Copies

OIL CONSERVATION DIVISION

2040 South Pacheco  
Santa Fe, New Mexico 87504-2088

☐ AMENDED REPORT

WELL LOCATION AND ACREAGE DEDICATION PLAT

API Number 30-015-	Pool Code 82770	Pool Name Penasco Draw Morrow
Property Code	Property Name OXY SWEET CORN STATE	Well Number 1
OGRID No. 16696	Operator Name OXY USA INC.	Elevation 3578'

Surface Location

UL or lot No.	Section	Township	Range	Lot Idn	Feet from the	North/South line	Feet from the	East/West line	County
P	29	18 S	25 E		660	SOUTH	660	EAST	EDDY

Bottom Hole Location If Different From Surface

UL or lot No.	Section	Township	Range	Lot Idn	Feet from the	North/South line	Feet from the	East/West line	County

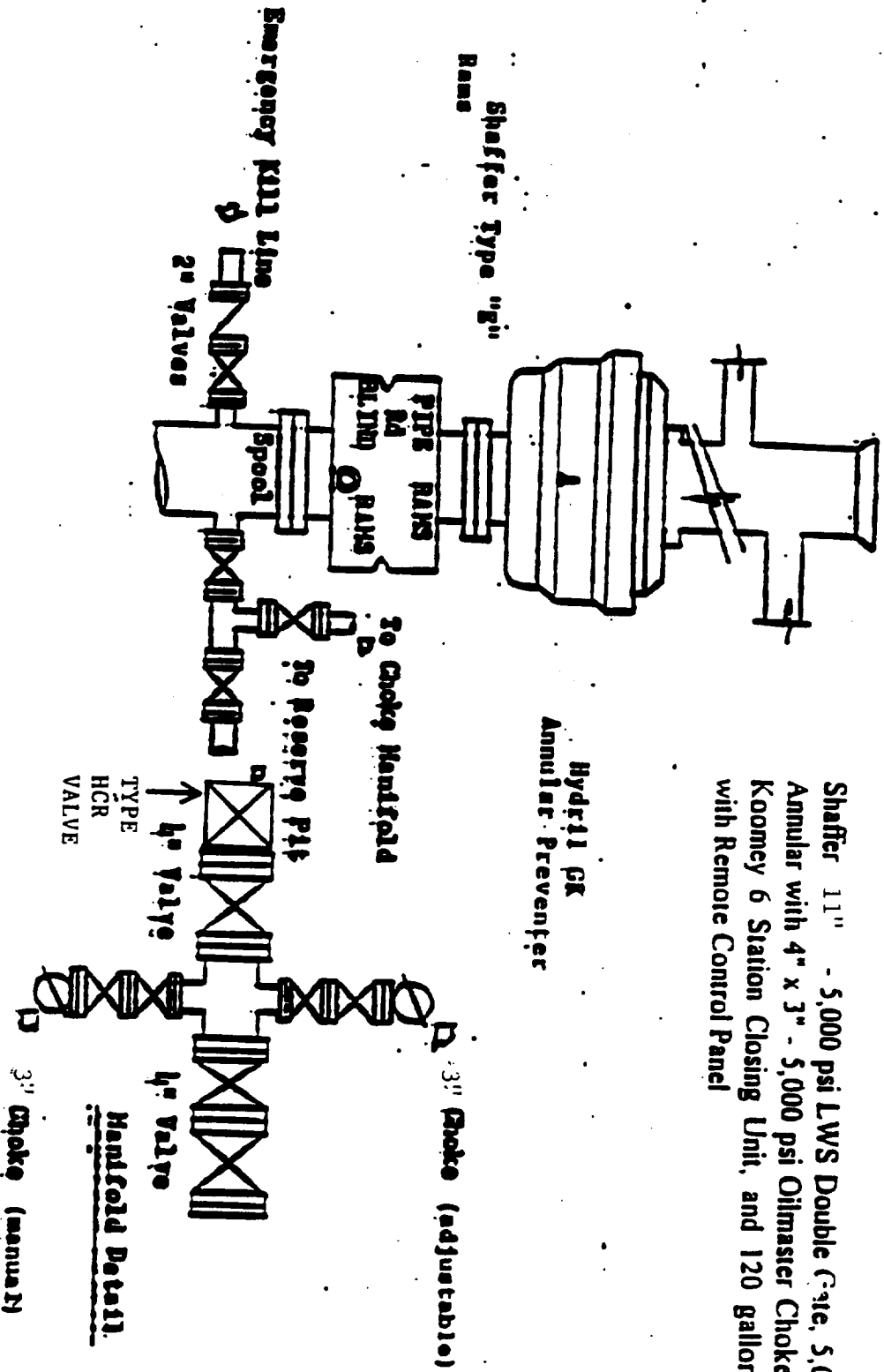
Dedicated Acres 320	Joint or Infill N	Consolidation Code	Order No.
------------------------	----------------------	--------------------	-----------

NO ALLOWABLE WILL BE ASSIGNED TO THIS COMPLETION UNTIL ALL INTERESTS HAVE BEEN CONSOLIDATED  
OR A NON-STANDARD UNIT HAS BEEN APPROVED BY THE DIVISION

	<b>OPERATOR CERTIFICATION</b>  <i>I hereby certify the the information contained herein is true and complete to the best of my knowledge and belief.</i>   Signature David Stewart Printed Name Regulatory Analyst Title 12/7/00 Date
	<b>SURVEYOR CERTIFICATION</b>  <i>I hereby certify that the well location shown on this plat was plotted from field notes of actual surveys made by me or under my supervision, and that the same is true and correct to the best of my belief.</i>  December 6, 2000 Date Surveyed  Signature & Seal of Professional Surveyor W.O. No. 06756 Certificate No. Gary L. Jones 7977 PROFESSIONAL LAND SURVEYOR BROWN SURVEYS

# **BLOWOUT PREVENTOR SCHEME**

EXHIBIT A

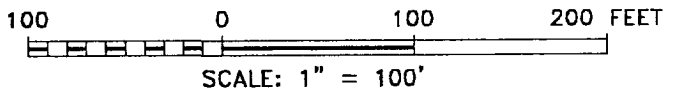
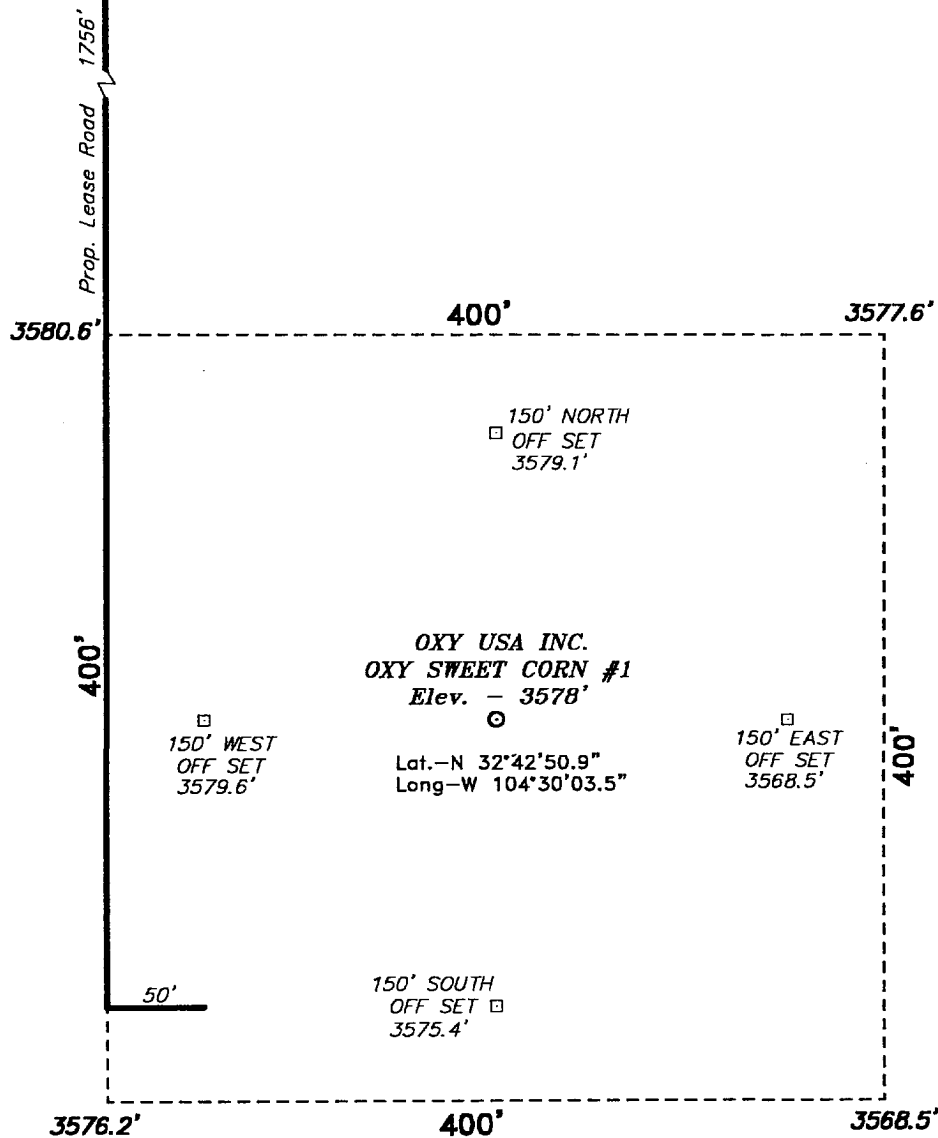


Shaffer 11" - 5,000 psi LWS Double Gate, 5,000 psi Shaffer Annular with 4" x 3" - 5,000 psi Oilmaster Choke Manifold and Koomey 6 Station Closing Unit, and 120 gallon Accumulator with Remote Control Panel

Choke Manifold

SECTION 29, TOWNSHIP 18 SOUTH, RANGE 25 EAST, N.M.P.M.,  
EDDY COUNTY, NEW MEXICO.

Existing Lease Road



Directions to Location:

FROM THE JUNCTION OF US HWY 285 AND CO. RD. 39(4 DRINKUS RD.), GO WEST ON CO. RD. 39 6.65 MILES TO A LEASE ROAD LEFT; THENCE SOUTHERLY, 0.9 MILE TO A WELL PAD; THEN FOLLOW ROAD FROM THE SE CORNER OF PAD EAST 0.15 MILE THENCE SOUTH, 0.65 MILE; THENCE THRU A CATTLE GUARD EAST 0.1 MILE TO PROPOSED LEASE ROAD ±1600 FEET NORTH OF LOCATION FLAG.

**Oxy USA Inc.**

REF: Oxy Sweet Corn No. 1 / Well Pad Topo

THE OXY SWEET CORN No. 1 LOCATED 660' FROM THE SOUTH LINE AND 660' FROM THE EAST LINE OF SECTION 29, TOWNSHIP 18 SOUTH, RANGE 25 EAST, N.M.P.M., EDDY COUNTY, NEW MEXICO.

**BASIN SURVEYS** P.O. BOX 1786-HOBBS, NEW MEXICO

W.O. Number: 0673

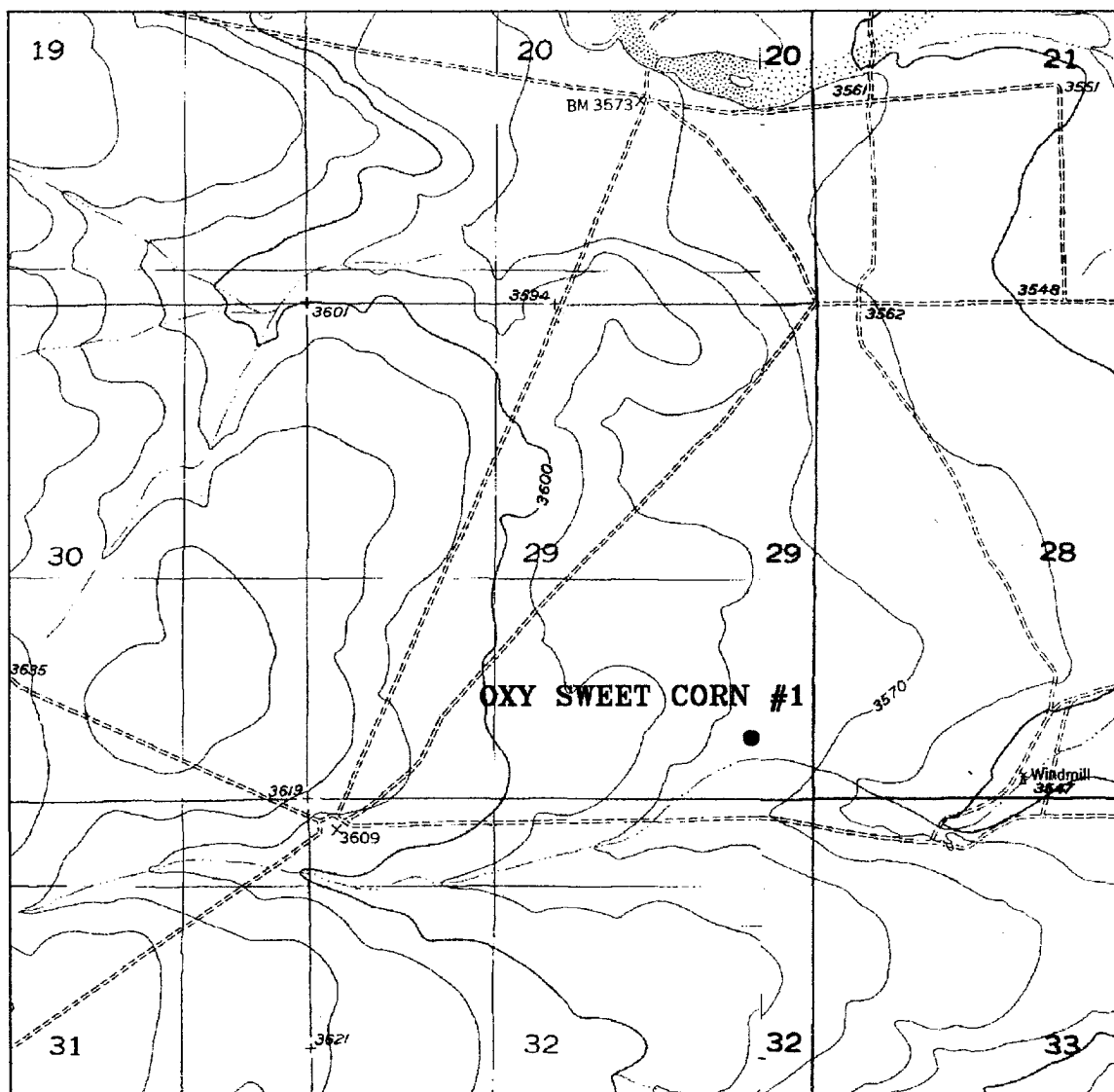
Drawn By: K. GOAD

Date: 12-06-2000

Disk: KJG #122 - 0673A.DWG

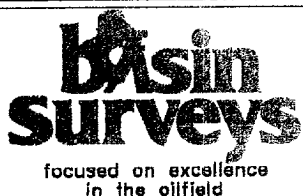
Survey Date: 12-06-2000

Sheet 1 of 1 Sheets



# **OXY SWEET CORN #1**

Located at 660' FSL and 660' FEL  
 Section 29, Township 18 South, Range 25 East,  
 N.M.P.M., Eddy County, New Mexico.



P.O. Box 1786  
 1120 N. West County Rd.  
 Hobbs, New Mexico 88241  
 (505) 393-7316 - Office  
 (505) 392-3074 - Fax  
 basinsurveys.com

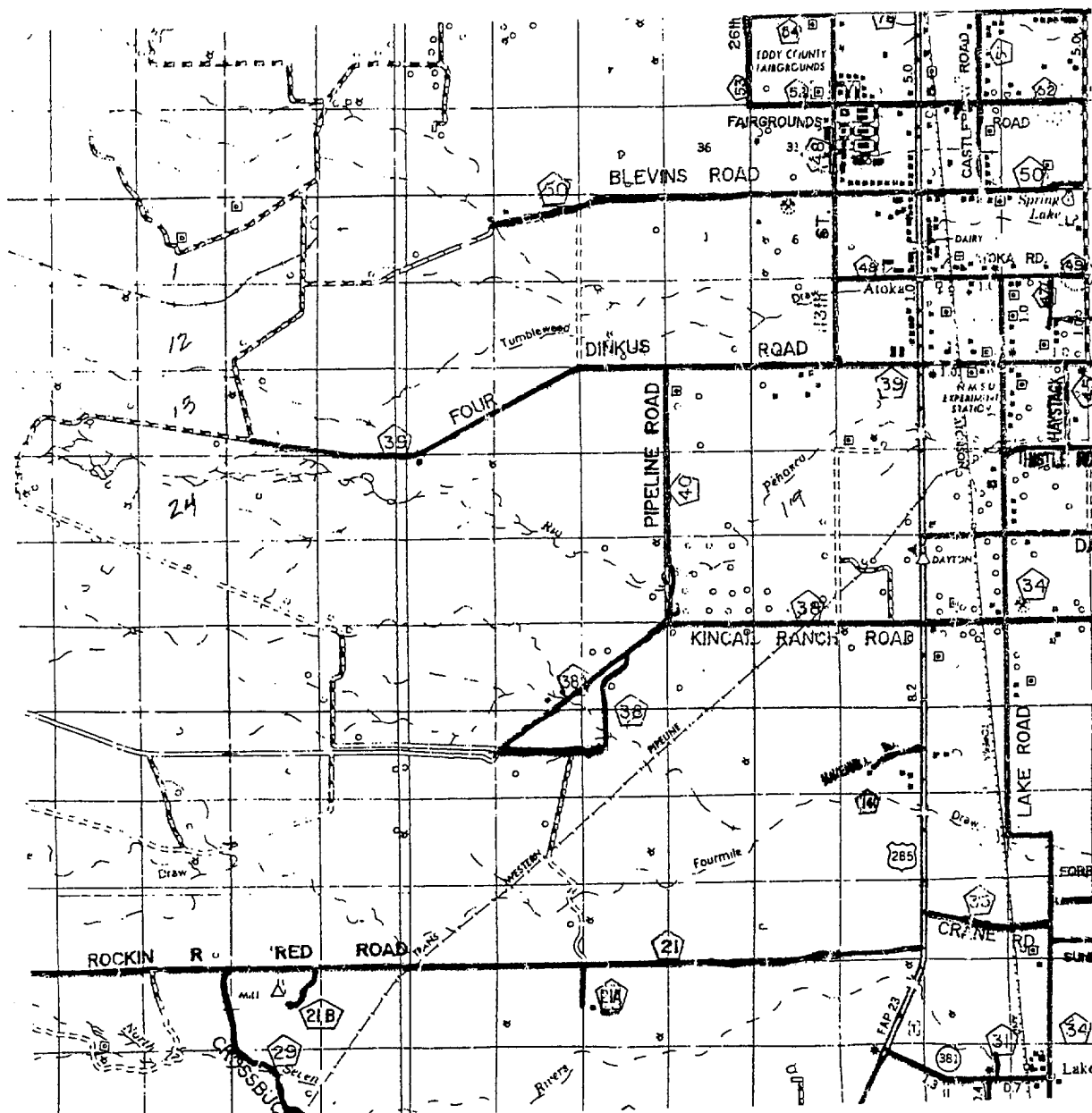
W.O. Number: 0673AA - KJG #122

Survey Date: 12-06-2000

Scale: 1" = 2000'

Date: 12-06-2000

**OXY USA INC.**



OXY SWEET CORN #1

Located at 660' FSL and 660' FEL

Section 29, Township 18 South, Range 25 East,  
N.M.P.M., Eddy County, New Mexico.

**basin**  
**surveys**  
focused on excellence  
in the oilfield

P.O. Box 1786  
1120 N. West County Rd.  
Hobbs, New Mexico 88241  
(505) 393-7316 - Office  
(505) 392-3074 - Fax  
basinsurveys.com

W.O. Number: 0673AA - KJG #122

Survey Date: 12-06-2000

Scale: 1" = 2 MILES

Date: 12-06-2000

OXY USA INC.