

District I  
1625 N. French Dr., Hobbs, NM 88240  
District II  
811 South First, Artesia, NM 88210  
District III  
1000 Rio Brazos Road, Aztec, NM 87410  
District IV  
2040 South Pacheco, Santa Fe, NM 87505

State of New Mexico  
Energy Minerals and Natural Resources

Oil Conservation Division  
2040 South Pacheco  
Santa Fe, NM 87505

Form C-101  
Revised March 17, 1999

Submit to appropriate District Office  
State Lease - 6 Copies  
Fee Lease - 5 Copies

☐ AMENDED REPORT

APPLICATION FOR PERMIT TO DRILL, RE-ENTER, DEEPEN, PLUGBACK, OR ADD A ZONE

Operator Name and Address CONCHO RESOURCES, INC. 110 WEST LOUISIANA SUITE 410 MIDLAND, TEXAS 79701		OGRID Number 166111
Property Code 26593 27009		API Number 30- 015- 31509
Property Name SOUTHERN CROSS "32" STATE COM.		Well No. 2

Surface Location									
UL or lot no. P	Section 32	Township 18S	Range 24E	Lot 1dn	Feet from the 660'	North/South line S	Feet from the 660'	East/West line E	County Eddy

Proposed Bottom Hole Location If Different From Surface						
UL or lot no. 1	Section	Township	Range	Lot 1dn	Feet from the	North/South line
Proposed Pool 1 UNDES. ANTELOPE SINK-MORROW						Notify OCD spud & time to witness cementing of 8 5/8 casing

Work Type Code N	Well Type Code G	Cable/Rotary ROTARY	Lease Type Code S	Ground Level Elevation 3735' GR.
Multiple NO	Proposed Depth 9000'	Formation MORROW	Contractor Unknown	Spud Date when approved

Proposed Casing and Cement Program					
Hole Size	Casing Size	Casing weight/foot	Setting Depth	Sacks of Cement	Estimated TOC
25"	20"	Conductor	40'	Redi-mix	Surface
12 1/4"	8 5/8"	24	1200'	1000 Sx.	Surface
7 7/8"	4 1/2"	11.6	9000'	1225 Sx.	3000' F. S. *

\* Cement on production casing to cover all Oil, Gas & water bearing zones.

22 Describe the proposed program. If this application is to DEEPEN or PLUG BACK, give the data on the present productive zone and proposed new productive zone. Describe the blowout prevention program, if any. Use additional sheets if necessary.

1. Drill 25" hole to 40'. Set 40' of 20" conductor pipe and cement to surface with Redi-mix.
2. Drill 12 1/4" hole to 1200'. Run and set 1200' of 8 5/8" 24# J-55 ST&C casing. Cement with 1000 Sx. of Class "C" cement. Lead with 500 Sx. of Halco Light + additives, tail in with 500 Sx. of Class "C" + 1/4# Flocele/Sx. + 2% CaCl, circulate cement to surface.
3. Drill 7 7/8" hole to 9000'. Run and set 9000' of 4 1/2" casing as follows: 1100' of 4 1/2" N-80 11.6# LT&C, 7000' of 4 1/2" J-55 11.6# LT&C, 900' of 4 1/2" N-80 11.6# LT&C. Cement with 300 Sx. of 35/65 Class "H" POZ + 6% Bentonite, + 6% Salt, + 1/4# Flocele/Sx., tail in with 925 Sx. of Class "H" 50/50 POZ + 2% Bentonite, + 6% Salt. Use enough cement to cover all Oil, Gas and Water bearing zones.

23 I hereby certify that the information given above is true and complete to the best of my knowledge and belief.

Signature: Joe T. Janica

Printed name: Joe T. Janica

Title: Agent

Date: 12/07/00

Phone: 505-391-8503

OIL CONSERVATION DIVISION

Approved by: ORIGINAL SIGNED BY TIM W. GUM

Title: DISTRICT II SUPERVISOR

Approval Date:

Expiration Date: DEC 14 2001

Conditions of Approval: DEC 14 2001

Attached ☐

DISTRICT II  
P.O. Drawer DD, Artesia, NM 88211-0719

DISTRICT III  
1000 Rio Brazos Rd., Aztec, NM 87410

DISTRICT IV  
P.O. BOX 2088, SANTA FE, N.M. 87504-2088

## OIL CONSERVATION DIVISION

P.O. Box 2088  
Santa Fe, New Mexico 87504-2088

☐ AMENDED REPORT

## WELL LOCATION AND ACREAGE DEDICATION PLAT

API Number	Pool Code	Pool Name
		UNDES. ANTELOPE SINK
Property Code 26593	Property Name SOUTHERN CROSS "32" STATE COM.	Well Number 2
OGRID No. 166111	Operator Name CONCHO RESOURCES, INC.	Elevation 3735

### Surface Location

UL or lot No.	Section	Township	Range	Lot Idn	Feet from the	North/South line	Feet from the	East/West line	County
P.	32	18 S	24E		660'	SOUTH	660	EAST	EDDY

## Bottom Hole Location If Different From Surface

UL or lot No.	Section	Township	Range	Lot Idn	Feet from the	North/South line	Feet from the	East/West line	County
Dedicated Acres	Joint or Infill	Consolidation Code	Order No.						
40 320									

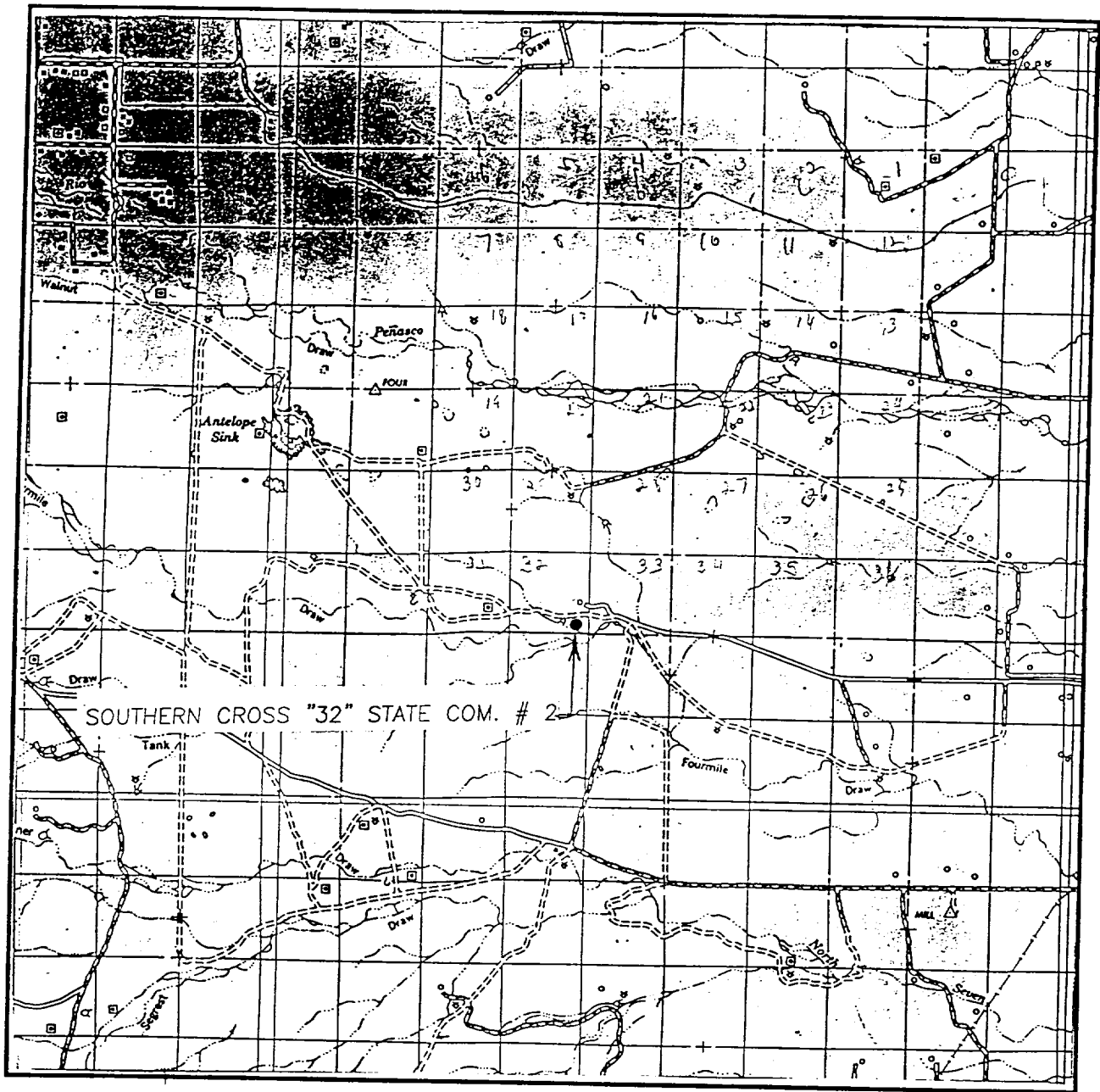
NO ALLOWABLE WILL BE ASSIGNED TO THIS COMPLETION UNTIL ALL INTERESTS HAVE BEEN CONSOLIDATED  
OR A NON-STANDARD UNIT HAS BEEN APPROVED BY THE DIVISION

				OPERATOR CERTIFICATION	
				<p><i>I hereby certify the information contained herein is true and complete to the best of my knowledge and belief.</i></p>	
				<p style="font-size: 1.2em;"><i>Joe T. Janica</i></p> <p>Signature _____</p>	
				<p>Printed Name <u>Joe T. Janica</u></p>	
				<p>Title <u>Agent</u></p>	
				<p>Date <u>12/07/00</u></p>	
				SURVEYOR CERTIFICATION	
				<p><i>I hereby certify that the well location shown on this plat was plotted from field notes of actual surveys made by me or under my supervision and that the same is true and correct to the best of my belief.</i></p>	
				<p>Date Surveyed <u>NOVEMBER 20, 2000</u></p>	
				<p>Signature &amp; Seal of Professional Surveyor _____</p>	
				<p style="text-align: right;">AWB</p>	
				<p style="text-align: center;"> </p>	
				<p style="text-align: center;">00-11-1477</p>	
				<p>Certificate No. RONALD J. EIDSON 3239 GARY EIDSON 12641</p>	


660'
660'

660'

# VICINITY MAP



SCALE: 1" = 2 MILES

SEC. 32 TWP. 18-S RGE. 24-E

SURVEY N.M.P.M.

COUNTY EDDY

DESCRIPTION 660' FSL & 660' FEL

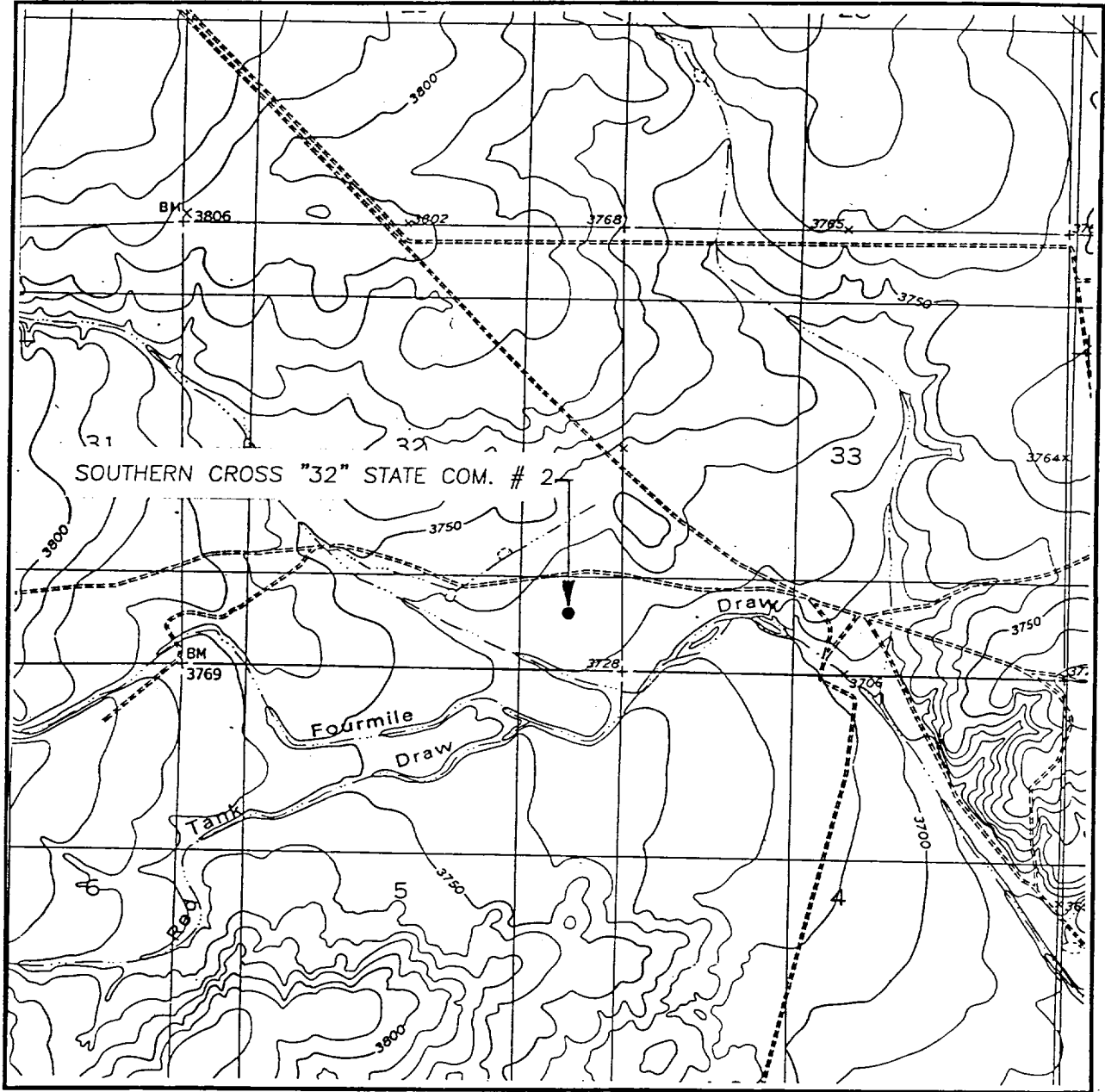
ELEVATION 3735

OPERATOR CONCHO RESOURCES, INC.

LEASE SOUTHERN CROSS "32" STATE COM.

JOHN WEST SURVEYING  
HOBBS, NEW MEXICO  
(505) 393-3117

# LOCATION VERIFICATION MAP



SCALE: 1" = 2000'

CONTOUR INTERVAL: 10'

SEC. 32 TWP. 18-S RGE. 24-E

PARISH RANCH, EDDY CO

SURVEY N.M.P.M.

COUNTY EDDY

DESCRIPTION 660' FSL & 660' FEL

ELEVATION 3735

OPERATOR CONCHO RESOURCES, INC.

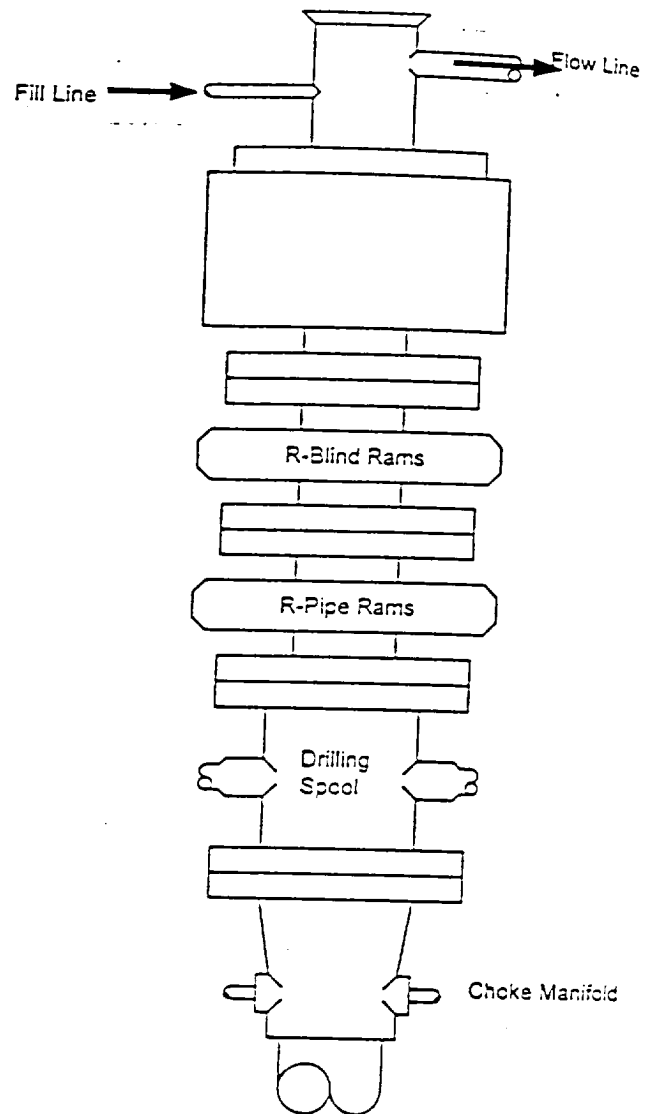
LEASE SOUTHERN CROSS "32" STATE COM.

U.S.G.S. TOPOGRAPHIC MAP

PARISH RANCH

JOHN WEST SURVEYING  
HOBBS, NEW MEXICO  
(505) 393-3117

# BLOWOUT PREVENTER SYSTEM



Type 900 Series  
3000 psi WP

Choke Manifold Assembly for 3M WP System

