

DISTRICT I  
1625 N. French Dr., Hobbs, NM 88240

DISTRICT II  
811 South First, Artesia, NM 88210

DISTRICT III  
1000 Rio Brazos Rd., Aztec, NM 87410

DISTRICT IV  
2040 South Pacheco, Santa Fe, NM 87501

State of New Mexico  
Energy, Minerals and Natural Resources Department

OIL CONSERVATION DIVISION  
PO BOX 2088  
Santa Fe, NM 87504-2088

Form C-101

Revised March 17, 1999  
Instructions on back  
Submit to appropriate District Office  
State Lease - 6 Copies  
Fee Lease - 5 Copies



☐ AMENDED REPORT

**APPLICATION FOR PERMIT TO DRILL, RE-ENTER, DEEPEN, PLUGBACK, OR ADD A ZONE**

<sup>1</sup> Operator Name and Address Yates Petroleum Corporation 105 South Fourth Street Artesia, New Mexico 88210		<sup>2</sup> OGRID Number 025575
<sup>3</sup> API Number 30- 015-31528		
<sup>4</sup> Property Code 27086	<sup>5</sup> Property Name Rumble AXM State	<sup>6</sup> Well No. 1

**7 Surface Location**

UL or lot no.	Section	Township	Range	Lot Idn	Feet from the	North/South Line	Feet from the	East/West Line	County
B	28	18S	25E		660'	North	1500'	East	Eddy

**8 Proposed Bottom Hole Location If Different From Surface**

UL or lot no.	Section	Township	Range	Lot Idn	Feet from the	North/South Line	Feet from the	East/West Line	County
<sup>9</sup> Proposed Pool 1 Wildcat Morrow					<sup>10</sup> Proposed Pool 2				

<sup>11</sup> Work Type Code N	<sup>12</sup> Well Type Code G	<sup>13</sup> Cable/Rotary R	<sup>14</sup> Lease Type Code S	<sup>15</sup> Ground Level Elevation 3546
<sup>16</sup> Multiple N	<sup>17</sup> Proposed Depth 9000'	<sup>18</sup> Formation Morrow	<sup>19</sup> Contractor Not Determined	<sup>20</sup> Spud Date ASAP

**21 Proposed Casing and Cement Program**

Hole Size	Casing Size	Casing weight/feet	Setting Depth	Sacks of Cement	Estimated TOC
17 1/2"	13 3/8"	48#	400'	415 sx	Surface
12 1/4"	8 5/8"	24#	1300'	655 sx	Surface
7 7/8"	5 1/2"	17#	9000'	670 sx	TOC 4700'
Cement to cover	all oil, gas, and	water bearing	zones.		

<sup>22</sup> Describe the proposed program. If this application is to DEEPEN or PLUG BACK give the data on the present productive zone and proposed new productivity. Describe the blowout prevention program, if any. Use additional sheets if necessary.

Yates Petroleum Corporation proposes to drill and test the Morrow and intermediate formations. Approximately 400' of surface casing will be set and cement circulated to shut off gravel and cavings. If commercial, production casing will be run and cemented, will perforate and stimulate as needed for production.

**MUD PROGRAM:** 0-400' FWGel/Spud Mud; 400'-1300' Fresh Water; 1300'-7900' Cut Brine; 7900'-9000' Salt Gel/Starch.

**BOPE PROGRAM:** A 3000# BOPE will be installed on the 13 3/8" casing and tested daily.

<sup>23</sup> I hereby certify that the information given above is true and complete to the best of my knowledge and belief. Signature:		<b>OIL CONSERVATION DIVISION</b>	
Printed name: Cy Cowan		Approved by: <b>ORIGINAL SIGNED BY TIM W. GUM</b>	
Title: Regulatory Agent		Title: <b>DISTRICT II SUPERVISOR</b>	
Date: 12/27/00	Phone: (505) 748-1471	Approval Date: <b>DEC 2 8 2000</b>	Expiration Date: <b>DEC 2 8 2001</b>
		Conditions of Approval Attached <input type="checkbox"/>	

Notify OCD spud & time to witness  
cementing of 8 5/8" CASING

District I  
1625 N. French Dr., Hobbs, NM 88240

District II  
811 South First, Artesia, NM 88210

District III  
1000 Rio Brazos Rd., Aztec, NM 87410

District IV  
2040 South Pacheco, Santa Fe, NM 87505

State of New Mexico  
Energy, Minerals & Natural Resources

OIL CONSERVATION DIVISION  
2040 South Pacheco  
Santa Fe, NM 87505

Form C-102  
Revised March 17, 1999

Submit to Appropriate District Office  
State Lease - 4 Copies  
Fee Lease - 3 Copies

☐ AMENDED REPORT

WELL LOCATION AND ACREAGE DEDICATION PLAT

1 API Number		2 Pool Code		3 Pool Name Wildcat Morrow	
4 Property Code		5 Property Name RUMBLE AXM STATE			6 Well Number 1
7 OGRID No. 025575		8 Operator Name YATES PETROLEUM CORPORATION			9 Elevation 3546.

10 Surface Location

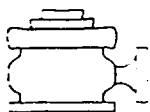
UL or lot no.	Section	Township	Range	Lot Idn	Feet from the	North/South line	Feet from the	East/West line	County
B	28	18-S	25-E		660	NORTH	1500	EAST	EDDY

11 Bottom Hole Location If Different From Surface

UL or lot no.	Section	Township	Range	Lot Idn	Feet from the	North/South line	Feet from the	East/West line	County
12 Dedicated Acres 320		13 Joint or Infill		14 Consolidation Code		15 Order No.			

NO ALLOWABLE WILL BE ASSIGNED TO THIS COMPLETION UNTIL ALL INTERESTS HAVE BEEN CONSOLIDATED OR A NON-STANDARD UNIT HAS BEEN APPROVED BY THE DIVISION

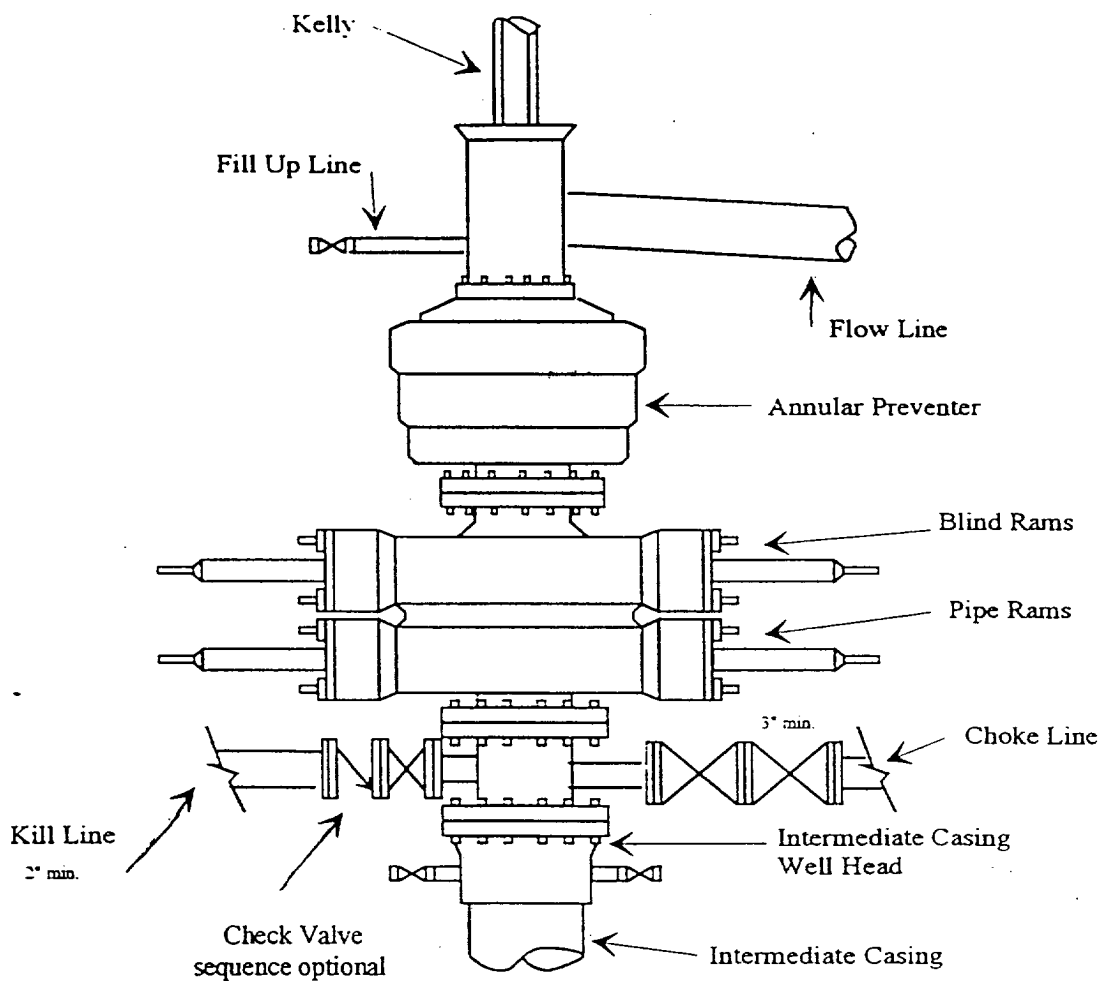
<p>6</p> <p>V-4801</p> <p>660'</p> <p>1500'</p>				<p>17 OPERATOR CERTIFICATION</p> <p>I hereby certify that the information contained herein is true and complete to the best of my knowledge and belief</p> <p><i>Cy Cowan</i></p> <p>Signature Cy Cowan</p> <p>Printed Name Regulatory Agent</p> <p>Title December 27, 2000</p> <p>Date</p>	
				<p>18 SURVEYOR CERTIFICATION</p> <p>I hereby certify that the well location shown on this plat was plotted from field notes of actual surveys made by me or under my supervision, and that the same is true and correct to the best of my belief.</p> <p>DECEMBER 21, 2000</p> <p>Date of Survey</p> <p>Signature and Seal of Professional Surveyor</p> <p>REGISTERED PROFESSIONAL ENGINEER</p> <p>NM PEARS NO 8412</p> <p>Certificate Number</p>	



# Yates Petroleum Corporation

BOP-3

## Typical 3,000 psi Pressure System Schematic Annular with Double Ram Preventer Stack



## Typical 3,000 psi choke manifold assembly with at least these minimum features

