

District I
PO Box 1980, Hobbs, NM 88241-1980

District II

PO Drawer DD, Artesia, NM 88211-0719

District III
1000 Rio Brazos Rd., Aztec, NM 87410

District IV
PO Box 2088, Santa Fe, NM 87504-2088

State of New Mexico
Energy, Minerals & Natural Resources Department

Form C-101
Revised February 10, 1998
Instructions on back
Submit to Appropriate District Office
State Lease-6 Copies
Fee Lease-5 Copies

OIL CONSERVATION DIVISION

PO Box 2088
Santa Fe, NM 87504-2088

☐ AMENDED REPORT

APPLICATION FOR PERMIT TO DRILL, RE-ENTER, DEEPEN, PLUGBACK, OR ADD A ZONE

Operator Name and Address Harvey E. Yates Company P.O. Box 1933 Roswell, N.M. 88202		OGRID Number 10179 API Number 30-0 15-31620
Property Code 12946	Property Name Empire South Deep Unit ESDU	WELL NO. 23

Surface Location									
UL or Lot no.	Section	Township	Range	Lot Idn	Feet from the	North/South line	Feet from the	East/West line	County
D	1	T-18S	R-28E		1,980'	NORTH	660	WEST	EDDY

Proposed Bottom Hole Location If Different From

UL or Lot no.	Section	Township	Range	Lot Idn	Feet from the	North/South line
Proposed Pool 1 EMPIRE MORROW SOUTH						

*
CEMENT TO COVER ALL OIL, GAS & WATER BEARING ZONES

Work Type Code	Well Type Code	Cable/Rotary	Lease Type Code	Ground Level Elevation
N	G	ROTARY	S	3,657' (GR)
Multiple	Proposed Depth	Formation	Contractor	Spud Date
N	11,200'	MORROW	UTI DRILLING	1-Jun-01

Proposed Casing and Cement Program

Hole Size	Casing Size	Casing weight/foot	Setting Depth	Sacks of Cement	Estimated TOC
17 1/2"	13 3/8"	48#	400'	425	CIRC. TO SURFACE
12 1/4"	8 5/8"	32#	3,100'	1200	CIRC. TO SURFACE
7 7/8"	5 1/2"	17#	11200	1200	600' ABOVE PAY*

Describe the proposed program. If this application is to DEEPEN or PLUG BACK give the data on the present productive zone and proposed new productive zone. Describe the blowout prevention program if any. Use additional sheets if necessary.

MUD PROGRAM

DEPTH TYPE OF MUD

0-400 FRESH WATER w/ PAPER & SHALE GUARD.
400-3,100 BRINE WATER w/ PAPER & SHALE GUARD.
3,100-7,700 FRESH WATER w/ PAPER, SHALE GUARD, N03, 18-20,000 CHLORIDES, & SWEEPS AS NEEDED.
7,700-11,250 MUD UP W/BARAZAN. 30,000 CHLORIDES, MW-9.2-9.4, VIS-34-36, WL-10-20

PRESSURE CONTROL EQUIPMENT

BOP w/ ANNULAR, 5,000 PSI RATED
UPPER AND LOWER KELLY COCK. ROTATING HEAD PRIOR TO DRILLING 8 5/8" SHOE

OTHER

THIS IS A POSSIBLE H2S AREA. AN H2S COMPLIANCE PACKAGE WILL BE UTILIZED.



I hereby certify that the information given above is true and complete to the best of my knowledge and belief.

Signature: *Bob Williams*
Printed name: Bob Williams
Title: Drilling Superintendent

Date: 2-19-01 448/00 Phone: 505-623-6601

OIL CONSERVATION DIVISION

Approved by: ORIGINAL SIGNED BY TIM W. GUM DISTRICT IV SUPERVISOR
Title: B64
Approval Date: FEB 26 2001 Expiration Date: FEB 26 2002
Conditions of Approval:
Attached:

State of New Mexico

Energy, Minerals and Natural Resources Department

DISTRICT I

P.O. Box 1980, Hobbs, NM 88241-1980

Form C-102

Revised February 10, 1994

Submit to Appropriate District Office

State Lease - 4 Copies

Fee Lease - 3 Copies

DISTRICT II

P.O. Drawer DD, Artesia, NM 88211-0719

OIL CONSERVATION DIVISION

P.O. Box 2088

Santa Fe, New Mexico 87504-2088

DISTRICT III

1000 Rio Brazos Rd., Artec, NM 87410

DISTRICT IV

P.O. BOX 2088, SANTA FE, N.M. 87504-2088

WELL LOCATION AND ACREAGE DEDICATION PLAT

☐ AMENDED REPORT

API Number	Pool Code	Pool Name EMPIRE MORROW SOUTH
Property Code	Property Name E.S.D.U.	Well Number 23
OGRID No. 10179	Operator Name HARVEY E. YATES COMPANY	Elevation 3657'

Surface Location

UL or lot No.	Section	Township	Range	Lot Idn	Feet from the	North/South line	Feet from the	East/West line	County
E	1	18-S	28-E		1980	NORTH	660	WEST	EDDY

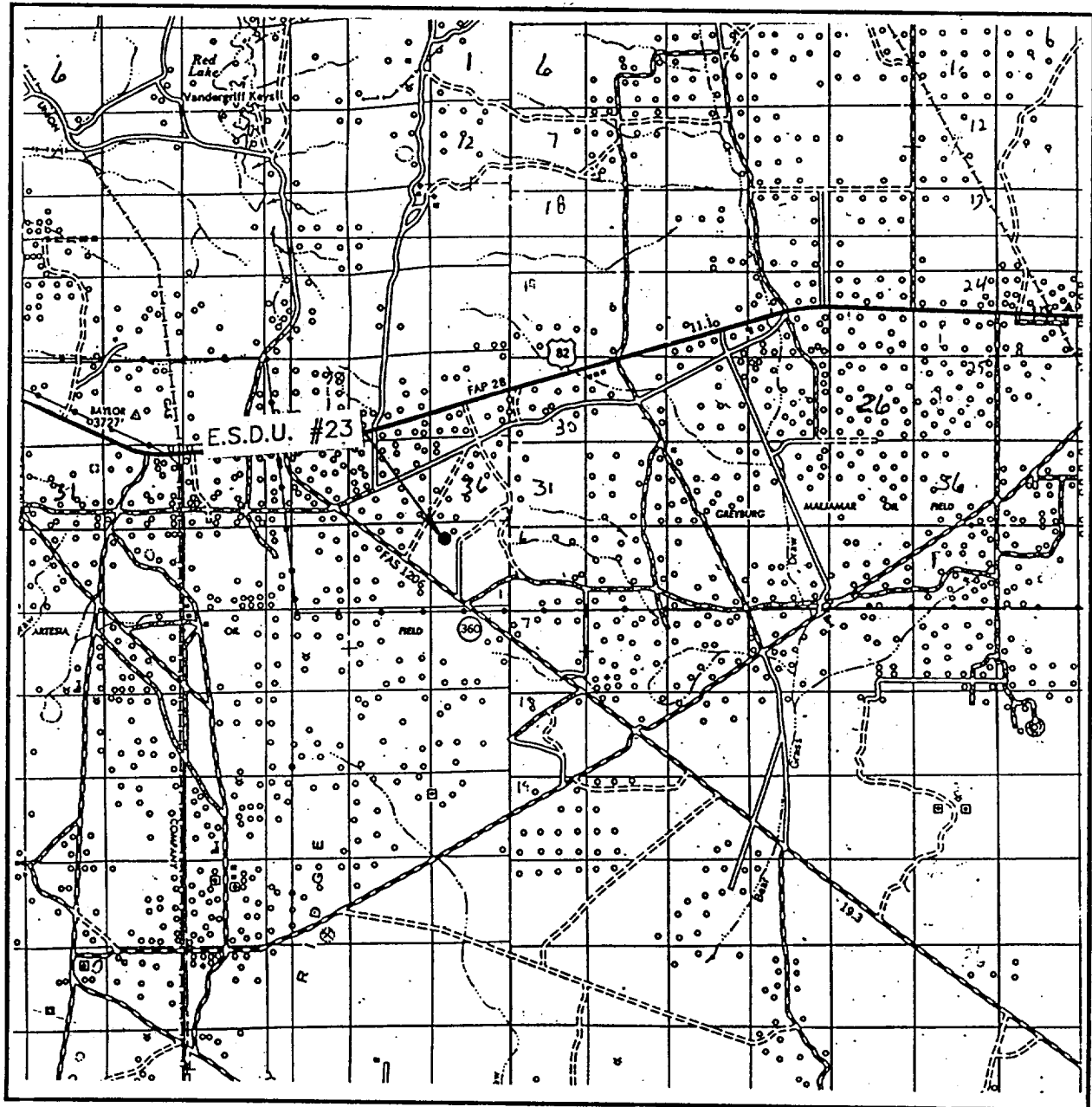
Bottom Hole Location If Different From Surface

UL or lot No.	Section	Township	Range	Lot Idn	Feet from the	North/South line	Feet from the	East/West line	County
Dedicated Acres 320	Joint or Infill	Consolidation Code	Order No.						

NO ALLOWABLE WILL BE ASSIGNED TO THIS COMPLETION UNTIL ALL INTERESTS HAVE BEEN CONSOLIDATED
OR A NON-STANDARD UNIT HAS BEEN APPROVED BY THE DIVISION

LOT 4 1980' 39.56 AC 660'	LOT 3 39.57 AC	LOT 2 39.56 AC	LOT 1 39.57 AC	OPERATOR CERTIFICATION I hereby certify the the information contained herein is true and complete to the best of my knowledge and belief. <u>Bob Williams</u> Signature <u>BOB WILLIAMS</u> Printed Name <u>DRIG. SUPT.</u> Title <u>2-19-01</u> Date	
					SURVEYOR CERTIFICATION I hereby certify that the well location shown on this plat was plotted from field notes of actual surveys made by me or under my supervision and that the same is true and correct to the best of my belief. FEBRUARY 14, 2001 Date Surveyed Signature & Seal of Professional Surveyor <u>Ronald J. Eidson</u> 02/15/01 01-11-0221 Certificate No. RONALD J. EIDSON 3239 GARY EIDSON 12641

VICINITY MAP



SCALE: 1" = 2 MILES

SEC. 1 TWP. 18-S RGE. 28-E

SURVEY N.M.P.M.

COUNTY EDDY

DESCRIPTION 1980' FNL & 660' FWL

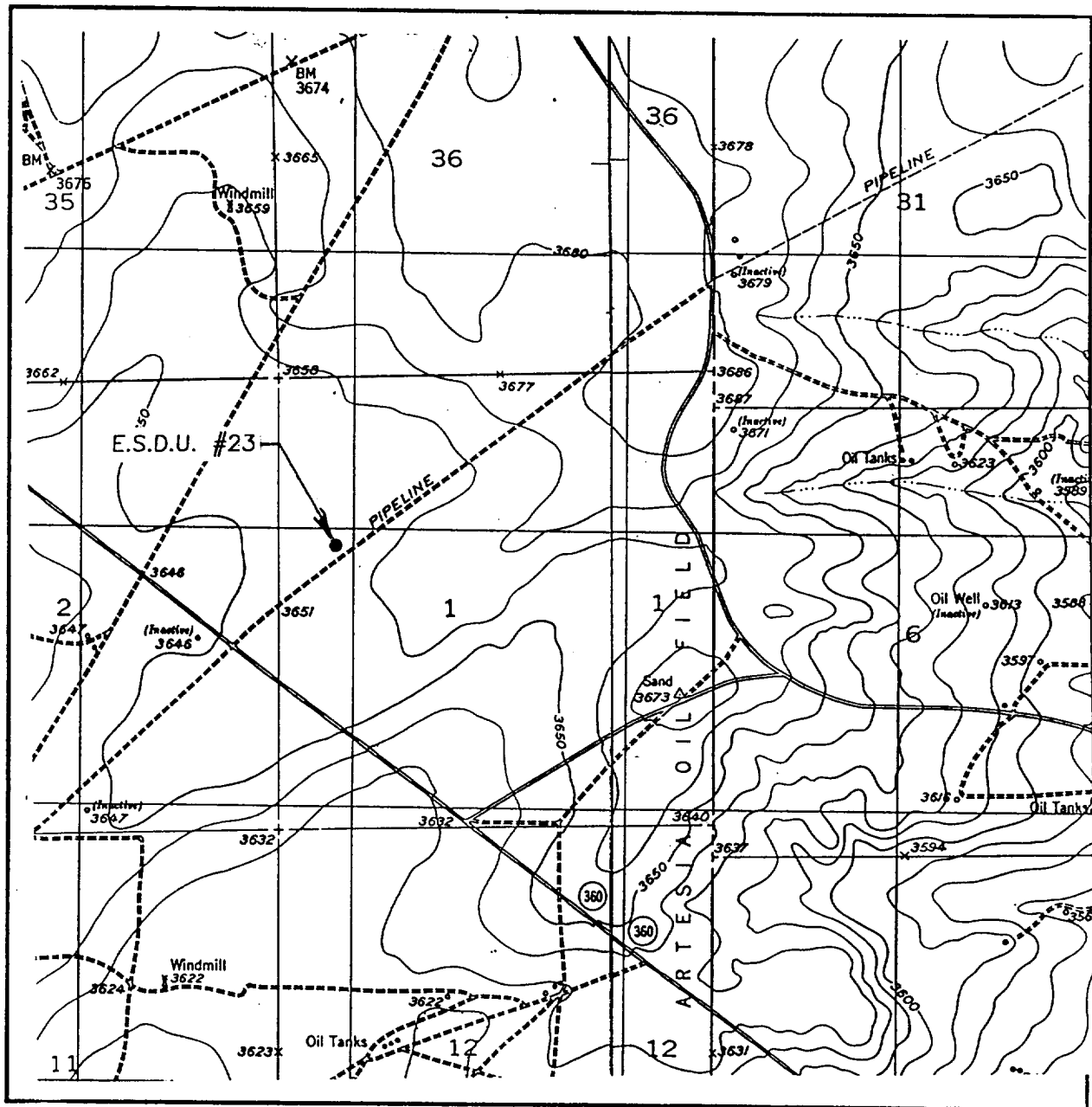
ELEVATION 3657'

OPERATOR HARVEY E. YATES COMPANY

LEASE E.S.D.U.

JOHN WEST SURVEYING
HOBBS, NEW MEXICO
(505) 393-3117

LOCATION VERIFICATION MAP



SCALE: 1" = 2000'

CONTOUR INTERVAL: 10'
RED LAKE, N.M.

SEC. 1 TWP. 18-S RGE. 28-E

SURVEY N.M.P.M.

COUNTY EDDY

DESCRIPTION 1980'FNL & 660'FWL

ELEVATION 3657'

OPERATOR HARVEY E. YATES COMPANY

LEASE E.S.D.U.

U.S.G.S. TOPOGRAPHIC MAP
RED LAKE, N.M.

JOHN WEST SURVEYING
HOBBS, NEW MEXICO
(505) 393-3117

EXHIBIT "C" BOP STACK

ESDU #23
1,980' FNL & 660' FWL
Sec 1, T18S, R28E
Eddy County, NM

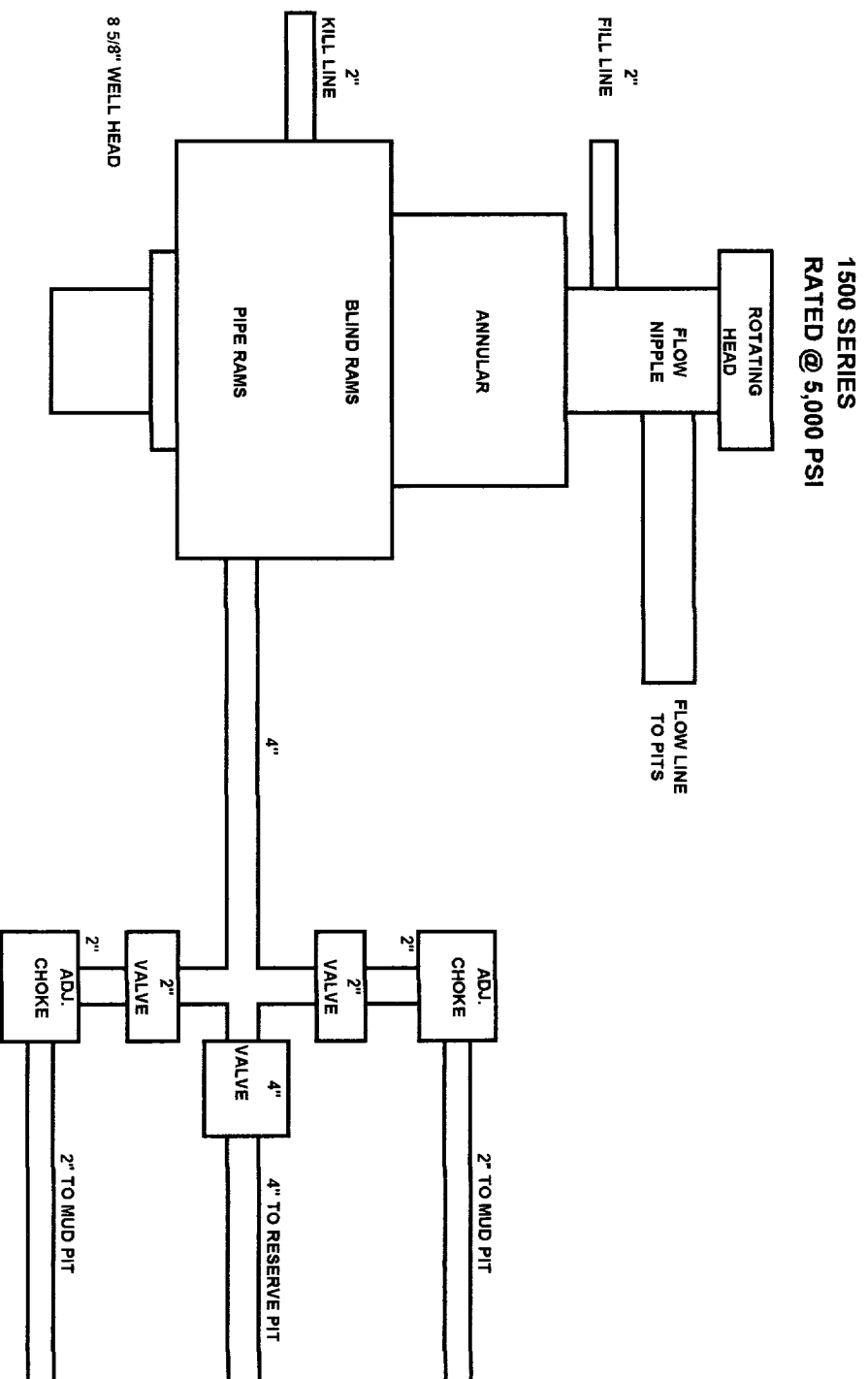


EXHIBIT "D" LOCATION DIAGRAM

ESDU #23
1,980' FNL & 660' FWL
Sec 1, T18S, R28E
Eddy County, NM

