

District I
1625 N. French Dr., Hobbs, NM 88240
District II
811 South First, Artesia, NM 88210
District III
1000 Rio Brazos Road, Aztec, NM 87410
District IV
2040 South Pacheco, Santa Fe, NM 87505

State of New Mexico
Energy Minerals and Natural Resources

Oil Conservation Division
2040 South Pacheco
Santa Fe, NM 87505

Form C-101
Revised March 17, 1999

Submit to appropriate District Office
State Lease - 6 Copies
Fee Lease - 5 Copies

☐ AMENDED REPORT

APPLICATION FOR PERMIT TO DRILL, RE-ENTER, DEEPEN, PLUGBACK, OR ADD A ZONE

¹ Operator Name and Address OXY USA WTP Limited Partnership P.O. Box 50250 Midland, TX 79710-0250		² OGRID Number 192463
		³ API Number 30-015-31652
³ Property Code 27693	⁵ Property Name OXY Trombone	⁶ Well No. 1

⁷ Surface Location

UL or lot no.	Section	Township	Range	Lot Idn	Feet from the	North/South line	Feet from the	East/West line	County
P	2	18S	25E		660	South	660	East	Eddy

⁸ Proposed Bottom Hole Location If Different From Surface

UL or lot no.	Section	Township	Range	Lot Idn	Feet from the	North/South line	Feet from the	East/West line	County
⁹ Proposed Pool 1 Atoka-Morrow, West					¹⁰ Proposed Pool 2 70760				

¹¹ Work Type Code N	¹² Well Type Code G	¹³ Cable/Rotary R	¹⁴ Lease Type Code P	¹⁵ Ground Level Elevation 3467'
¹⁶ Multiple No	¹⁷ Proposed Depth 8700'	¹⁸ Formation Morrow	¹⁹ Contractor UTI	²⁰ Spud Date 6/1/01

²¹ Proposed Casing and Cement Program

Hole Size	Casing Size	Casing weight/foot	Setting Depth	Sacks of Cement	Estimated TOC
17-1/2"	13-3/8"	48#	400'	360	Surface
12 1/4"	8-5/8"	32#	1300'	425	Surface
7-7/8"	4-1/2"	11.6#	8700'	685	EST-6000'

22 Describe the proposed program. If this application is to DEEPEN or PLUG BACK, give the data on the present productive zone and proposed new productive zone. Describe the blowout prevention program, if any. Use additional sheets if necessary.

SEE OTHER SIDE

NOTIFY OCD SPUD & TIME TO WITNESS
CEMENTING OF INTERMDIATE CASING

RECEIVED
OCD - ARTESIA

²³ I hereby certify that the information given above is true and complete to the best of my knowledge and belief.

Signature:

Printed name: David Stewart

Title: Regulatory Analyst

Date: 3/13/01

Phone: 915-685-5717

OIL CONSERVATION DIVISION

Approved by:

Title:

Approval Date: MAR 14 2001

Expiration Date: MAR 14 2002

Conditions of Approval:

Attached ☐

OXY Trombone #1

660 FSL 660 FEL P SEC 2 T18S R25E Eddy County, NM

PROPOSED TD: 8700' TVD

BOP PROGRAM: 0' - 400' None

400' - 1300' 11" 5M blind and pipe rams with 5M annular preventer.

1300' - 8700' 11" 5M blind pipe rams with 5M annular preventer and rotating head below 6000'.

CASING: Surface: 13-3/8" OD 48# H40 ST&C new casing set at 400' 17-1/2" hole

Intermediate: 8-5/8" OD 32# K55 ST&C new casing from 0-1300' 11" hole

Production: 4-1/2" OD 11.6# N80 LT&C new casing from 0-8700' 7-7/8" hole

CEMENT: Surface - Circulate cement with 160sx 35:65 POZ/C with 6% Bentonite + 2% CaCl₂ + .25#/sx Cello-Seal followed by 200sx Cl C with 2% CaCl₂.

Intermediate - Circulate cement with 225sx 35:65 POZ/C with 6% Bentonite + 2% CaCl₂ + .25#/sx Cello-Seal followed by 200sx Cl C with 2% CaCl₂.

Production - Cement with 610sx 15:61:11 POZ/C/CSE with .5% FL-52 + .5% FL-25 + 8#/sx Gilsonite followed by 75sx Cl C with .7% FL-25.

Estimated top of cement is 6000'.

Note: Cement volumes may need to be adjusted to hole caliper.

MUD: 0 - 400' Fresh water/native mud. Lime for pH control (9-10). Paper for seepage. Wt 8.7-9.2 ppg, Vis 32-34 sec

400' - 1300' Fresh/*Brine water. Lime for pH control (10.0-10.5). Paper for seepage. Wt 8.3-9.0/10.0-10.1ppg, Vis 28-29 sec
*Fresh water will be used unless chlorides in the mud system increases to 2000ppm.

1300' - 6000' Fresh water. Lime for pH control (9-9.5). Paper for seepage. Wt 8.3-8.5 ppg, Vis 28-29 sec

6000' - 7400' Cut brine. Lime for pH control (10-10.5). Wt 9.6-10.0 ppg, Vis 28-29sec

7400' - 8700' Mud up with an Duo Vis/Flo Tool mud system. Wt 9.6-10.0ppg, Vis 32-36sec, WL<10cc

DISTRICT II
811 South First, Artesia, NM 88210

DISTRICT III
1000 Rio Brazos Rd., Aztec, NM 87410

DISTRICT IV
2040 South Pacheco, Santa Fe, NM 87505

OIL CONSERVATION DIVISION

2040 South Pacheco
Santa Fe, New Mexico 87504-2088

Submit to Appropriate District Office
State Lease - 4 Copies
Fee Lease - 3 Copies

☐ AMENDED REPORT

WELL LOCATION AND ACREAGE DEDICATION PLAT

API Number 30-015-		Pool Code 70760	Pool Name Atoka-Morrow, West
Property Code	Property Name OXY TROMBONE		Well Number 1
OGRID No. 192463	Operator Name OXY USA WTP Limited Partnership		Elevation 3467'

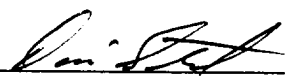
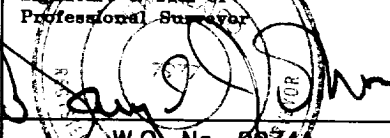
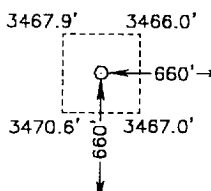
Surface Location

UL or lot No.	Section	Township	Range	Lot Idn	Feet from the	North/South line	Feet from the	East/West line	County
P	2	18 S	25 E		660	SOUTH	660	EAST	EDDY

Bottom Hole Location If Different From Surface

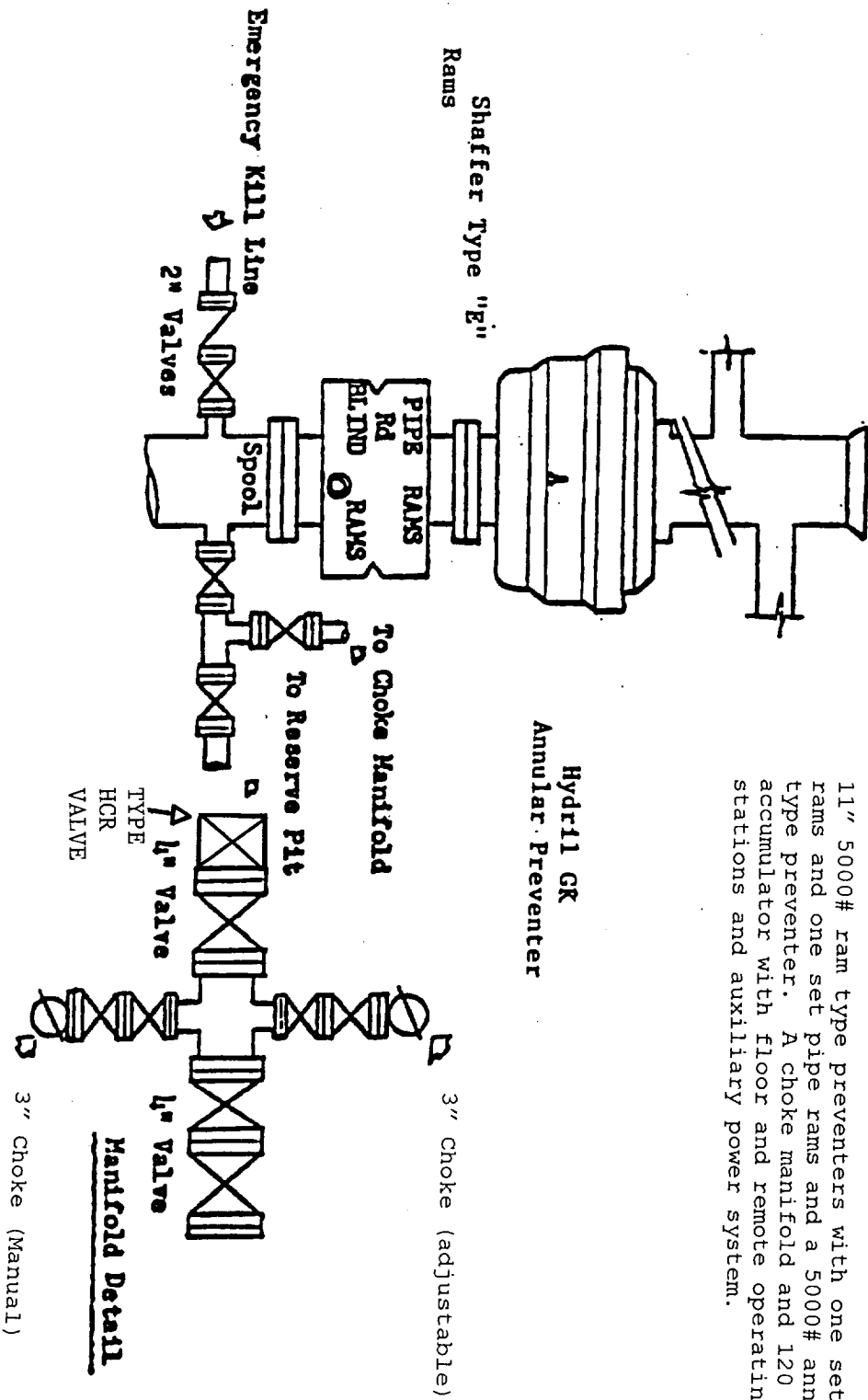
UL or lot No.	Section	Township	Range	Lot Idn	Feet from the	North/South line	Feet from the	East/West line	County
Dedicated Acres	Joint or Infill	Consolidation Code	Order No.						
320	N								

NO ALLOWABLE WILL BE ASSIGNED TO THIS COMPLETION UNTIL ALL INTERESTS HAVE BEEN CONSOLIDATED
OR A NON-STANDARD UNIT HAS BEEN APPROVED BY THE DIVISION

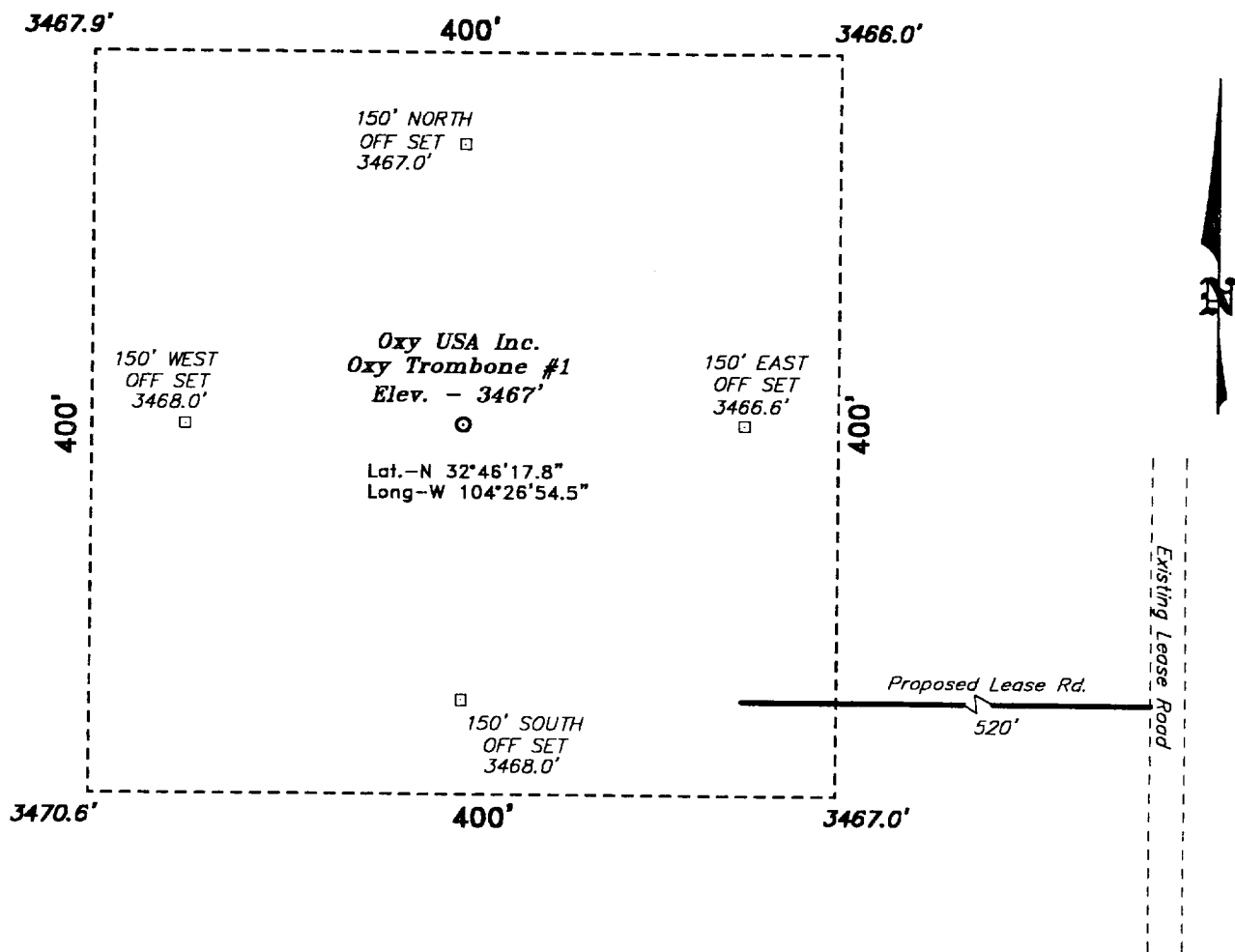
				<p>OPERATOR CERTIFICATION</p> <p><i>I hereby certify the the information contained herein is true and complete to the best of my knowledge and belief.</i></p> <p><u></u> Signature</p> <p>David Stewart Printed Name</p> <p>Regulatory Analyst Title</p> <p><u>3/13/01</u> Date</p>
				<p>SURVEYOR CERTIFICATION</p> <p><i>I hereby certify that the well location shown on this plat was plotted from field notes of actual surveys made by me or under my supervision, and that the same is true and correct to the best of my belief.</i></p> <p><u>February 4, 2000</u> Date Surveyed</p> <p><u></u> Signature & Seal of Professional Surveyor</p> <p>W.O. No. 0074A</p> <p>Certificate No. Gary L. Jones 7977</p> <p>BASIN SURVEYS</p>
			<p>LAT - N 32°46'17.8"</p> <p>LONG - W 104°26'54.5"</p>	

BLOWOUT PREVENTOR SCHEME

11" 5000# ram type preventers with one set blind rams and one set pipe rams and a 5000# annular type preventer. A choke manifold and 120 gallon accumulator with floor and remote operating stations and auxiliary power system.



SECTION 2, TOWN 18 SOUTH, RANGE 5 EAST, N.M.P.M.,
EDDY COUNTY, NEW MEXICO.



Directions to Location:

FROM JUNCTION CO. RD. 50 AND US HWY 285, GO WEST ON CO. RD. 285 APPROX. 2 MILES TO A LEASE ROAD; THENCE SOUTH ON LEASE ROAD APPROX. 5000 FEET TO A PROPOSED LEASE ROAD WHICH LIES 520 FEET FROM THE SOUTHEAST CORNER OF THE PROPOSED WELL LOCATION.

BASIN SURVEYS P.O. BOX 1786—HOBBS, NEW MEXICO

W.O. Number: 0074A Drawn By: **K. GOAD**

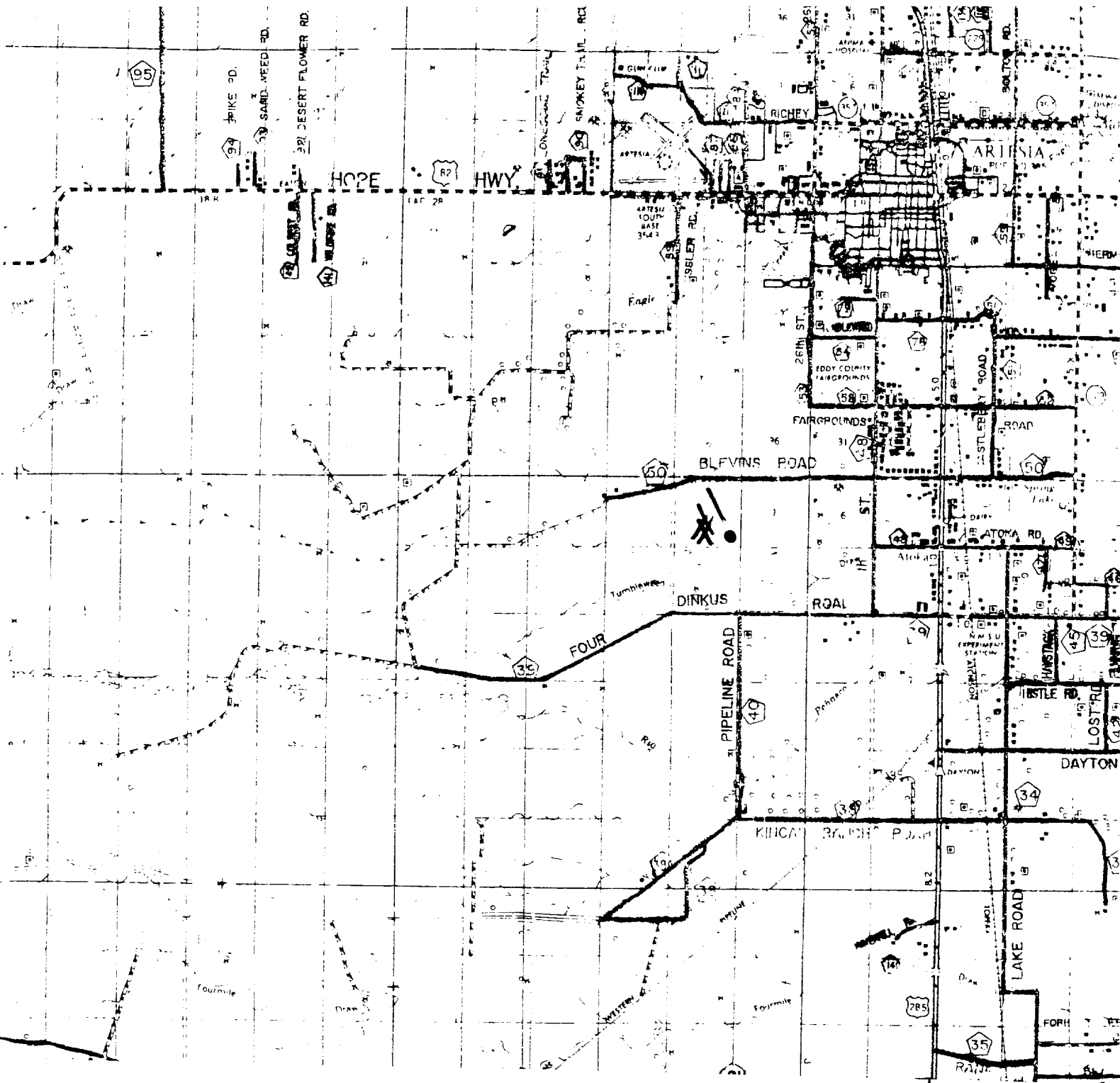
Date: 02-07-2000 Disk: KJG #122 - 0074A.DWG

Oxy USA Inc.

REF: Oxy Trombone No. 1 / Well Pad Topo

THE OXY TROMBONE No. 1 LOCATED 660' FROM THE SOUTH LINE AND 660' FROM THE EAST LINE OF SECTION 2, TOWNSHIP 18 SOUTH, RANGE 25 EAST, N.M.P.M., EDDY COUNTY, NEW MEXICO.

Survey Date: 02-04-2000 Sheet 1 of 1 Sheets



OXY USA INC.
 Oxy Trombone #1
 660' FSL & 660' FEL
 Sec. 2, T-18-S, R-25-E,
 Eddy County, New Mexico.

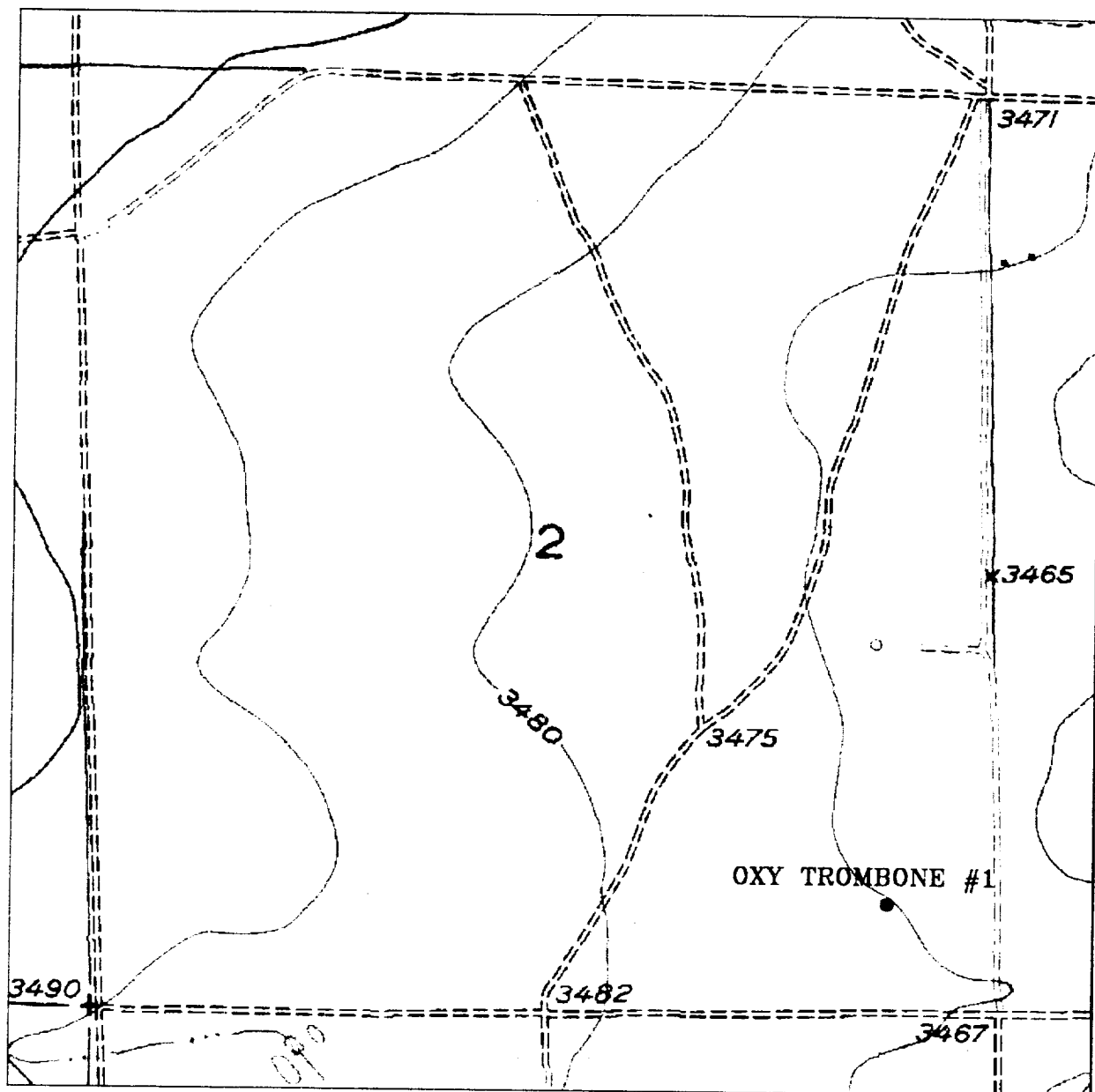
SCALE: 1"=2 MILES

BASIN SURVEYS

P.O. BOX 1786—HOBBS, NEW MEXICO



W.O. Number: 0074	Drawn By: K. GOAD	Survey Date: 02-04-2000	Sheet 1 of 1 Sheets
-------------------	-------------------	-------------------------	---------------------



OXY TROMBONE #1

Located at 660' FSL and 660' FEL
Section 2, Township 18 South, Range 25 East,
N.M.P.M., Eddy County, New Mexico.



focused on excellence
in the oilfield

P.O. Box 1786
1120 N. West County Rd.
Hopbs, New Mexico 88241
(505) 393-7316 - Office
(505) 392-3074 - Fax
basinsurveys.com

W.O. Number: 0074AA - KJG #122

Survey Date: 02-04-2000

Scale: 1" = 1000'

Date: 02-07-2000

OXY USA INC.