

District I
1625 N. French Dr., Hobbs, NM 88240
District II
811 South First, Artesia, NM 88210
District III
1000 Rio Brazos Road, Aztec, NM 87410
District IV
2040 South Pacheco, Santa Fe, NM 87505

State of New Mexico
Energy Minerals and Natural Resources

Oil Conservation Division
2040 South Pacheco
Santa Fe, NM 87505

c/sr
Bum
Bum
dp
Form C-101
Revised March 17, 1999
Submit to appropriate District Office
State Lease - 6 Copies
Fee Lease - 5 Copies

☐ AMENDED REPORT

APPLICATION FOR PERMIT TO DRILL, RE-ENTER, DEEPEN, PLUGBACK, OR ADD A ZONE

¹ Operator Name and Address OXY USA WTP Limited Partnership P.O. Box 50250 Midland, TX 79710-0250		² OGRID Number 192463
		³ API Number 30 - 015 - 31845
³ Property Code 28271	⁵ Property Name OXY Engelbert	⁶ Well No. 1

⁷ Surface Location

UL or lot no.	Section	Township	Range	Lot Idn	Feet from the	North/South line	Feet from the	East/West line	County
I	15	18S	25E		1980	South	660	East	Eddy

⁸ Proposed Bottom Hole Location If Different From Surface

UL or lot no.	Section	Township	Range	Lot Idn	Feet from the	North/South line	Feet from the	East/West line	County
⁹ Proposed Pool 1 Atoka Morrow, West					70760	¹⁰ Proposed Pool 2			

¹¹ Work Type Code N	¹² Well Type Code G	¹³ Cable/Rotary R	¹⁴ Lease Type Code P	¹⁵ Ground Level Elevation 3505'
¹⁶ Multiple No	¹⁷ Proposed Depth 8700'	¹⁸ Formation Morrow	¹⁹ Contractor UTI	²⁰ Spud Date 7/4/01

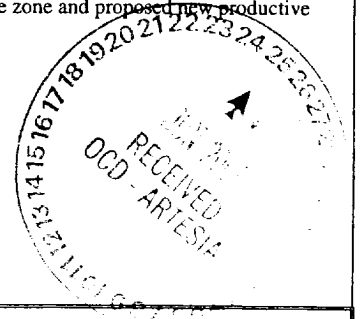
²¹ Proposed Casing and Cement Program

Hole Size	Casing Size	Casing weight/foot	Setting Depth	Sacks of Cement	Estimated TOC
17-1/2"	13-3/8"	48#	400'	360	Circulate
11"	8-5/8"	32#	1300'	515	Circulate
7-7/8"	4-1/2"	11.6#	8700'	690	EST TOC 4800'

22 Describe the proposed program. If this application is to DEEPEN or PLUG BACK, give the data on the present productive zone and proposed new productive zone. Describe the blowout prevention program, if any. Use additional sheets if necessary.

NOTIFY OCD SPUD & TIME TO WITNESS
CEMENTING OF SURFACE &
INTERMEDIATE

SEE OTHER SIDE



²³ I hereby certify that the information given above is true and complete to the best of my knowledge and belief.

Signature:

Printed name: David Stewart

Title: Sr. Regulatory Analyst

Date:

6/22/01

Phone: 915-685-5717

OIL CONSERVATION DIVISION

Approved by: **ORIGINAL SIGNED BY TIM W. GUM**
DISTRICT II SUPERVISOR

Title:

Approval Date: **JUN 25 2001**

Expiration Date: **JUN 25 2002**

Conditions of Approval:

Attached ☐

OXY Engelbert #1
1980 FSL 660 FEL NESE(I) SEC 15 T18S R25E Eddy County, NM
Fee

PROPOSED TD: 8700' TVD

BOP PROGRAM: 0' - 400' None
400' - 1300' 11" 5M blind and pipe rams with 5M annular
preventer.
1300' - 8700' 11" 5M blind pipe rams with 5M annular
preventer and rotating head below 5300'.

CASING: Surface: 13-3/8" OD 48# H40 ST&C new casing set at 400'
Intermediate: 8-5/8" OD 32# K55 ST&C new casing from 0-1300'
Production: 4-1/2" OD 11.6# N80 LT&C new casing from 0-8700'

CEMENT: Surface - Circulate cement with 160sx 35:65 POZ/C with 6% Bentonite
+ 2% CaCl_2 + .25#/sx Cello-Seal followed by 200sx Cl C with 2% CaCl_2 .
Intermediate - Circulate cement with 315sx 35:65 POZ/C with 6%
Bentonite + 2% CaCl_2 + .25#/sx Cello-Seal followed by 200sx Cl C
with 2% CaCl_2 .
Production - Cement with 615sx 15:61:11 POZ/C/CSE with
.5% FL-52 + .5% FL-25 + 8#/sx Gilsonite followed by 75sx Cl C
with .7% FL-25.
Estimated top of cement is 4800'.

Note: Cement volumes may need to be adjusted to hole caliper.

MUD: 0 - 400' Fresh water/native mud. Lime for pH control
(9-10). Paper for seepage.
Wt 8.7-9.2 ppg, Vis 32-34 sec
400' - 1300' Fresh/*Brine water. Lime for pH control
(10.0-10.5). Paper for seepage.
Wt 8.3-9.0/10.0-10.1ppg, Vis 28-29 sec
*Fresh water will be used unless chlorides in
the mud system increases to 20000ppm.
1300' - 5300' Fresh water. Lime for pH control (9-9.5).
Paper for seepage.
Wt 8.3-8.5 ppg, Vis 28-29 sec
5300' - 7900' Cut brine. Lime for pH control (10-10.5).
Wt 9.6-10.0 ppg, Vis 28-29sec
7900' - 8700' Mud up with an Duo Vis/Flo Trol mud system.
Wt 9.6-10.0ppg, Vis 32-36sec, WL<10cc

DISTRICT I
1825 N. Franch Dr., Hobbs, NM 88240
DISTRICT II
811 South First, Artesia, NM 88210
DISTRICT III
1000 Rio Brazos Rd., Aztec, NM 87410
DISTRICT IV
2040 South Pacheco, Santa Fe, NM 87505

State of New Mexico
Energy, Minerals and Natural Resources Department

Form C-102
Revised March 17, 1999

Submit to Appropriate District Office
State Lease - 4 Copies
Fee Lease - 3 Copies

OIL CONSERVATION DIVISION

2040 South Pacheco
Santa Fe, New Mexico 87504-2088

☐ AMENDED REPORT

WELL LOCATION AND ACREAGE DEDICATION PLAT

API Number 30-015-	Pool Code 70760	Pool Name Atoka Morrow, West
Property Code	Property Name OXY ENGELBERT	Well Number 1
OGRID No. 192463	Operator Name OXY USA WTP Limited Partnership	Elevation 3505

Surface Location

UL or lot No. 1	Section 15	Township 18 S	Range 25 E	Lot Idn	Feet from the 1980	North/South line SOUTH	Feet from the 660	East/West line EAST	County EDDY
--------------------	---------------	------------------	---------------	---------	-----------------------	---------------------------	----------------------	------------------------	----------------

Bottom Hole Location If Different From Surface

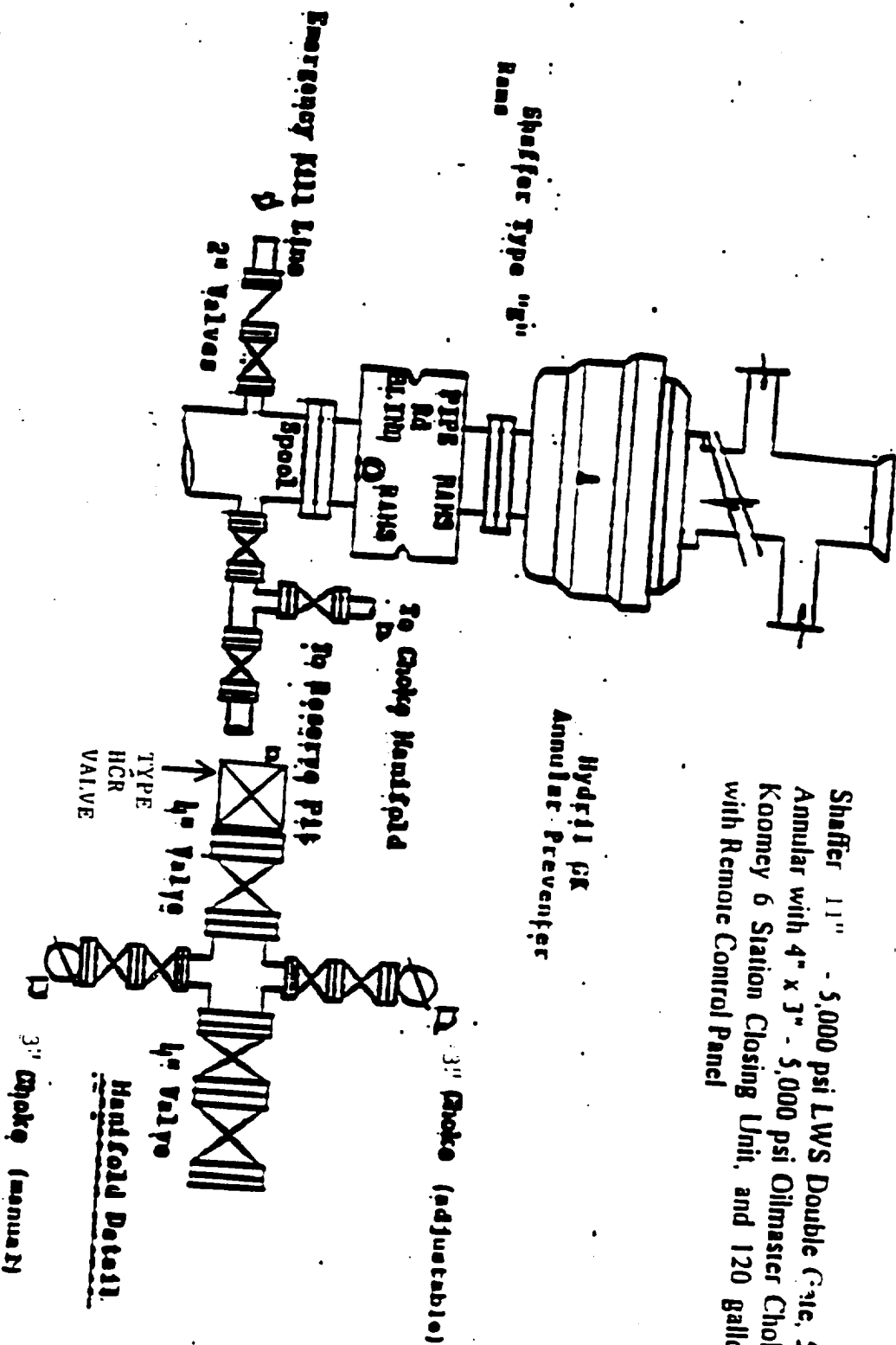
UL or lot No.	Section	Township	Range	Lot Idn	Feet from the	North/South line	Feet from the	East/West line	County
Dedicated Acres 320	Joint or Infill N	Consolidation Code	Order No.						

NO ALLOWABLE WILL BE ASSIGNED TO THIS COMPLETION UNTIL ALL INTERESTS HAVE BEEN CONSOLIDATED
OR A NON-STANDARD UNIT HAS BEEN APPROVED BY THE DIVISION

				OPERATOR CERTIFICATION I hereby certify the the information contained herein is true and complete to the best of my knowledge and belief. Signature David Stewart Printed Name Sr. Regulatory Analyst Title 6/22/01 Date	
				SURVEYOR CERTIFICATION I hereby certify that the well location shown on this plat was plotted from field notes of actual surveys made by me or under my supervision, and that the same is true and correct to the best of my belief. JANUARY 9, 2001 Date Surveyed Signature & Seal of Professional Surveyor W.O. No. 0725 Certificate No. Gary L. Jones 7977 BASIN SURVEYS	

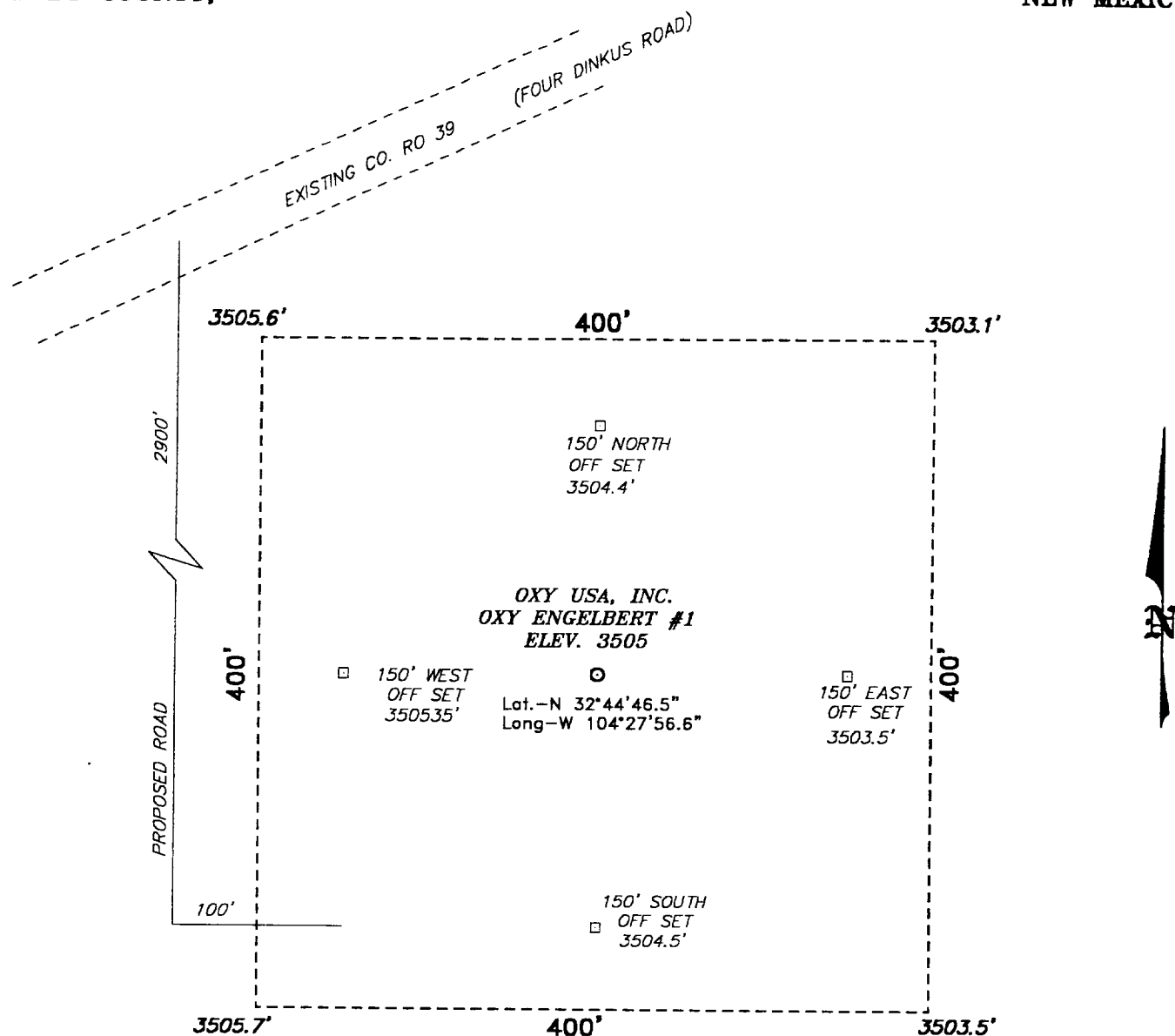
BLOWOUT PREVENTION SCHEMATIC

EXHIBIT A



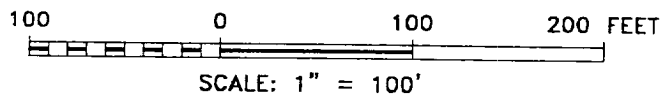
Shaffer 11" - 5,000 psi LWS Double Gate, 5,000 psi Shaffer Annular with 4" x 3" - 5,000 psi Oilmaster Choke Manifold and Koomey 6 Station Closing Unit, and 120 gallon Accumulator with Remote Control Panel

**SECTION 15, TOWNSHIP 15 SOUTH, RANGE 25 EAST, N.M.P.M.,
EDDY COUNTY, NEW MEXICO.**



Directions to Location:

FROM THE JUNCTION OF US HWY 285 AND COUNTY ROAD 39, GO WEST ON ROAD 39 APPROX. 4 MILES TO A POINT WHICH LIES APPROX. 2800 FEET NORTH OF THE PROPOSED WELL LOCATION.



BASIN SURVEYS P.O. BOX 1786-HOBBS, NEW MEXICO

W.O. Number: 0725

Drawn By: **JAMES PRESLEY**

01/11/01

Disk: JLP #1 - 0725A.DWG

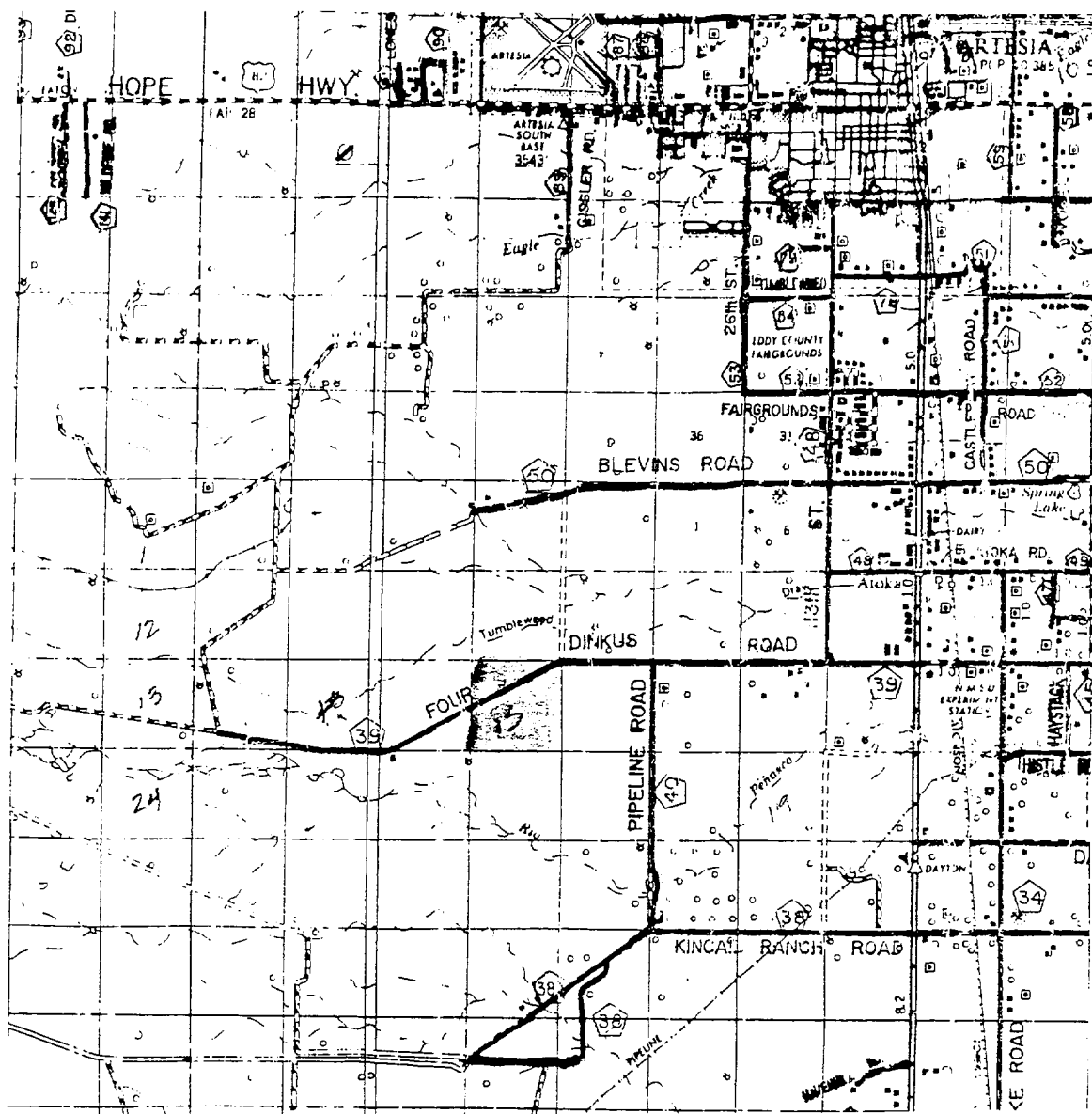
OXY USA INC.

REF: OXY ENGELBERT #1 / Well Pad Topo

THE OXY ENGELBERT No. 1 LOCATED 1980' FROM THE SOUTH LINE AND 660' FROM THE EAST LINE OF SECTION 15, TOWNSHIP 18 SOUTH, RANGE 25 EAST, N.M.P.M., EDDY COUNTY, NEW MEXICO.

Survey Date: 01/08/01

Sheet 1 of 1 Sheets



ENGELBERT #1

Located at 1980' FSL and 660' FEL
Section 15, Township 18 South, Range 25 East,
N.M.P.M., Eddy County, New Mexico.

basin
surveys
focused on excellence
in the oilfield

P.O. Box 1786
1120 N. West County Rd.
Hobbs, New Mexico 88241
(505) 393-7316 - Office
(505) 392-3074 - Fax
basinsurveys.com

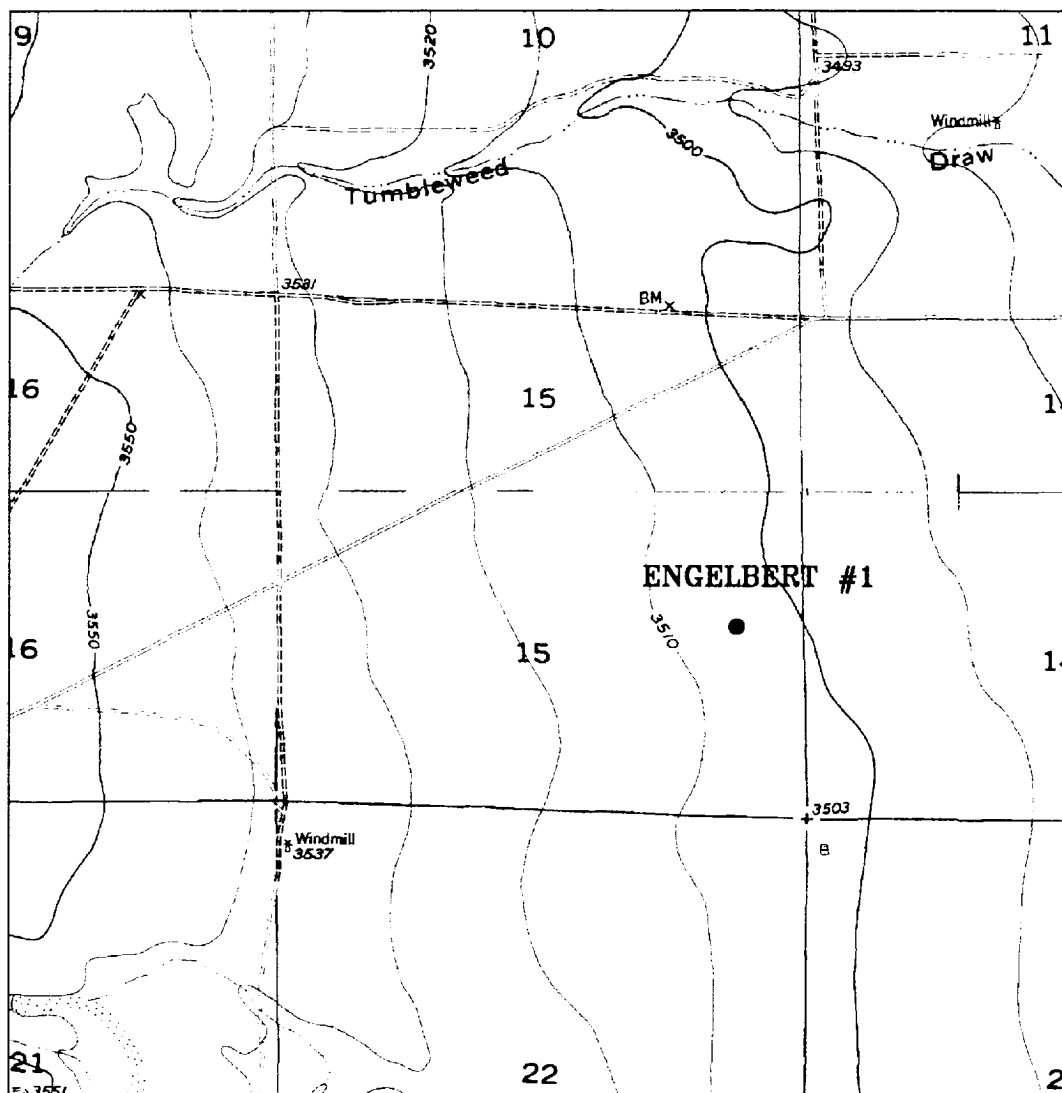
W.O. Number: 0725AA - JLP #1

Survey Date: 01/09/01

Scale: 1" = 2 MILES

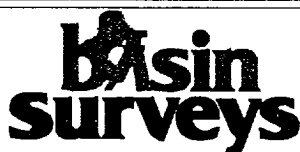
Date: 01/11/01

OXY USA INC.



ENGELBERT #1

Located at 1980' FSL and 660' FEL
 Section 15, Township 18 South, Range 25 East,
 N.M.P.M., Eddy County, New Mexico.



focused on excellence
 in the oilfield

P.O. Box 1786
 1120 N. West County Rd.
 Hobbs, New Mexico 88241
 (505) 393-7316 - Office
 (505) 392-3074 - Fax
 basinsurveys.com

W.O. Number: 0725AA - JLP #1

Survey Date: 01/09/01

Scale: 1" = 2000'

Date: 01/11/01

OXY USA INC.