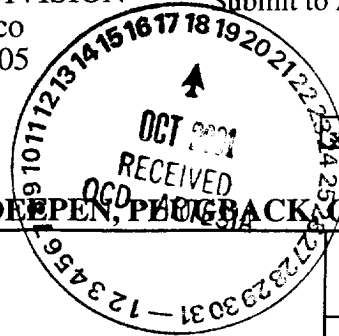


District I
PO Box 1980, Hobbs, NM 88241-1980
District II
811 S. 1st Street, Artesia, NM 88210-2834
District III
1000 Rio Brazos Rd., Aztec, NM 87410
District IV
2040 South Pacheco, Santa Fe, NM 87505

State of New Mexico
Energy, Minerals & Natural Resources Department

OIL CONSERVATION DIVISION
2040 South Pacheco
Santa Fe, NM 87505

Form C-101
Revised October 18, 1994
Instructions on back
Submit to Appropriate District Office
State Lease - 6 Copies
Fee Lease - 5 Copies



AMENDED REPORT

APPLICATION FOR PERMIT TO DRILL, RE-ENTER, DEEPEN, PLUG BACK OR ADD A ZONE

¹ Operator name and Address OXY USA WTP Limited Partnership P.O. Box 50250 Midland, TX 79710-0250		² OGRID Number 192463
⁴ Property Code 27573		³ API Number 30-0 015-31931
⁵ Property Name OXY Swinger		⁶ Well No. 1

⁷ Surface Location

UL or lot no.	Section	Township	Range	Lot. Idn	Feet from the	North/South Line	Feet from the	East/West line	County
X G	15	18S	25E		1980	north	1980	east	Eddy

⁸ Proposed Bottom Hole Location If Different From Surface

UL or lot no.	Section	Township	Range	Lot. Idn	Feet from the	North/South Line	Feet from the	East/West line	County
⁹ Proposed Pool 1 Atoka Morrow, West					¹⁰ Proposed Pool 2 70760				

¹¹ Work Type Code N	¹² Well Type Code G	¹³ Cable/Rotary R	¹⁴ Lease Type Code P	¹⁵ Ground Level Elevation 3499'
¹⁶ Multiple No	¹⁷ Proposed Depth 8700'	¹⁸ Formation Morrow	¹⁹ Contractor UTI	²⁰ Spud Date 10/31/01

²¹ Proposed Casing and Cement Program

Hole Size	Casing Size	Casing weight/foot	Setting Depth	Sacks of Cement	Estimated TOC
17-1/2"	13-3/8"	48#	400'	360sx	surface-circulate
11"	8-5/8"	32#	1300'	515sx	surface-circulate
7-7/8"	4-1/2"	11.6#	8700'	690sx	Est TOC-4800'

²² Describe the proposed program. If this application is to DEEPEN or PLUG BACK give the data on the present productive zone and proposed new productive zone. Describe the blowout prevention program, if any. Use additional sheets if necessary

AMEND SURFACE LOCATION

New: 1980 FNL 1980 FEL G Sec 15 T18S R25E

Old: 660 FNL 660 FEL A Sec 15 T18S R25E

See other side for additional information

²³ I hereby certify that the information given above is true and complete to the best of my knowledge and belief.

Signature:

Printed name: **David Stewart**

Title: **Sr. Regulatory Analyst**

OIL CONSERVATION DIVISION

Approved by:

**ORIGINAL SIGNED BY TIM W. GUM
DISTRICT II SUPERVISOR**

Title:

Approval Date:

OCT 18 2001

Expiration Date:

OCT 18 2002

OXY Swinger #1
660 FNL 660 FEL NENE(A) SEC 15 T18S R25E Eddy County, NM

PROPOSED TD: 9200' TVD

BOP PROGRAM: 0' - 400' None

400' - 1300' 11" 5M blind and pipe rams with 5M annular preventer.

1300' - 8700' 11" 5M blind pipe rams with 5M annular preventer and rotating head below 5300'.

CASING: Surface: 13-3/8" OD 48# H40 ST&C new casing set at 400'
Intermediate: 8-5/8" OD 32# K55 ST&C new casing from 0-1300'
Production: 4-1/2" OD 11.6# N80 LT&C new casing from 0-8700'

CEMENT: Surface - Circulate cement with 160sx 35:65 POZ/C with 6% Bentonite + 2% CaCl₂ + .25#/sx Cello-Seal followed by 200sx Cl C with 2% CaCl₂.

Intermediate - Circulate cement with 315sx 35:65 POZ/C with 6% Bentonite + 2% CaCl₂ + .25#/sx Cello-Seal followed by 200sx Cl C with 2% CaCl₂.

Production - Cement with 615sx 15:61:11 POZ/C/CSE with .5% FL-52 + .5% FL-25 + 8#/sx Gilsonite followed by 75sx Cl C with .7% FL-25.

Estimated top of cement is 4800'.

Note: Cement volumes may need to be adjusted to hole caliper.

MUD: 0 - 400' Fresh water/native mud. Lime for pH control (9-10). Paper for seepage.
Wt 8.7-9.2 ppg, Vis 32-34 sec

400' - 1300' Fresh/*Brine water. Lime for pH control (10.0-10.5). Paper for seepage.
Wt 8.3-9.0/10.0-10.1ppg, Vis 28-29 sec
*Fresh water will be used unless chlorides in the mud system increases to 20000ppm.

1300' - 5300' Fresh water. Lime for pH control (9-9.5). Paper for seepage.
Wt 8.3-8.5 ppg, Vis 28-29 sec

5300' - 7900' Cut brine. Lime for pH control (10-10.5).
Wt 9.6-10.0 ppg, Vis 28-29sec

7900' - 8700' Mud up with an Duo Vis/Flo Trol mud system.
Wt 9.6-10.0ppg, Vis 32-36sec, WL<10cc

DISTRICT I
1825 N. French Dr., Hobbs, NM 88240
DISTRICT II
811 South First, Artesia, NM 88210

DISTRICT III
1000 Rio Brazos Rd., Artesia, NM 87410

DISTRICT IV
2040 South Pacheco, Santa Fe, NM 87505

State of New Mexico
Energy, Minerals and Natural Resources Department

Form C-102
Revised March 17, 1999

Submit to Appropriate District Office
State Lease - 4 Copies
Fee Lease - 3 Copies

OIL CONSERVATION DIVISION

2040 South Pacheco
Santa Fe, New Mexico 87504-2088

☒ AMENDED REPORT

WELL LOCATION AND ACREAGE DEDICATION PLAT

API Number 30-015-31931	Pool Code 70760	Pool Name Atoka Morrow, West
Property Code 27573	Property Name OXY SWINGER	Well Number 1
OGRID No. 192463	Operator Name OXY USA WTP, L.P.	Elevation 3510'

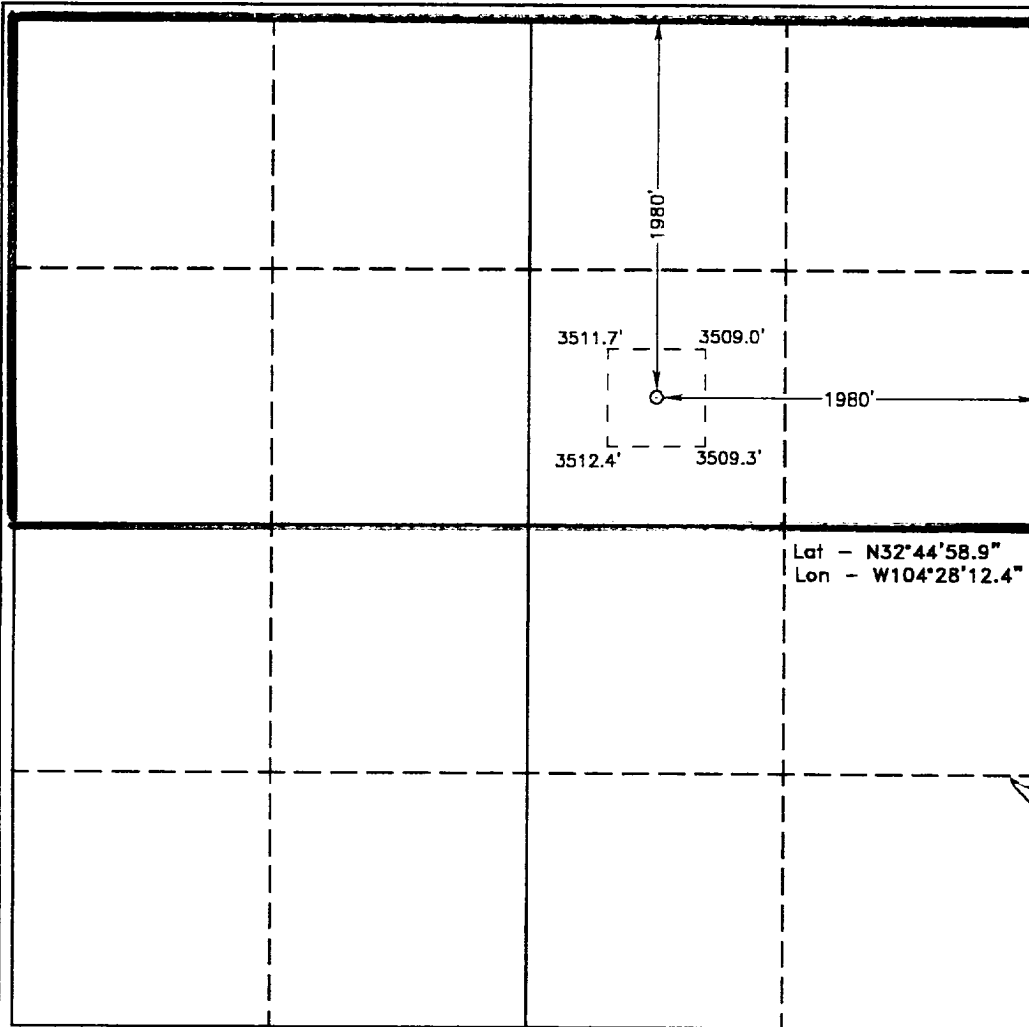
Surface Location

UL or lot No. G	Section 15	Township 18 S	Range 25 E	Lot Idn	Feet from the 1980	North/South line NORTH	Feet from the 1980	East/West line EAST	County EDDY
--------------------	---------------	------------------	---------------	---------	-----------------------	---------------------------	-----------------------	------------------------	----------------

Bottom Hole Location If Different From Surface

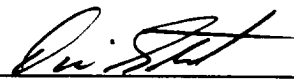
UL or lot No.	Section	Township	Range	Lot Idn	Feet from the	North/South line	Feet from the	East/West line	County
Dedicated Acres 320	Joint or Infill N	Consolidation Code	Order No.						

NO ALLOWABLE WILL BE ASSIGNED TO THIS COMPLETION UNTIL ALL INTERESTS HAVE BEEN CONSOLIDATED
OR A NON-STANDARD UNIT HAS BEEN APPROVED BY THE DIVISION



OPERATOR CERTIFICATION

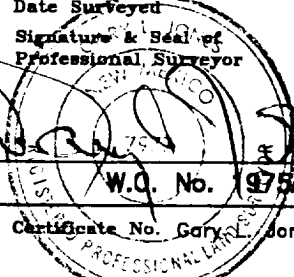
I hereby certify the the information
contained herein is true and complete to the
best of my knowledge and belief.


Signature
David Stewart
Printed Name
Sr. Regulatory Analyst
Title
10/17/01
Date

SURVEYOR CERTIFICATION

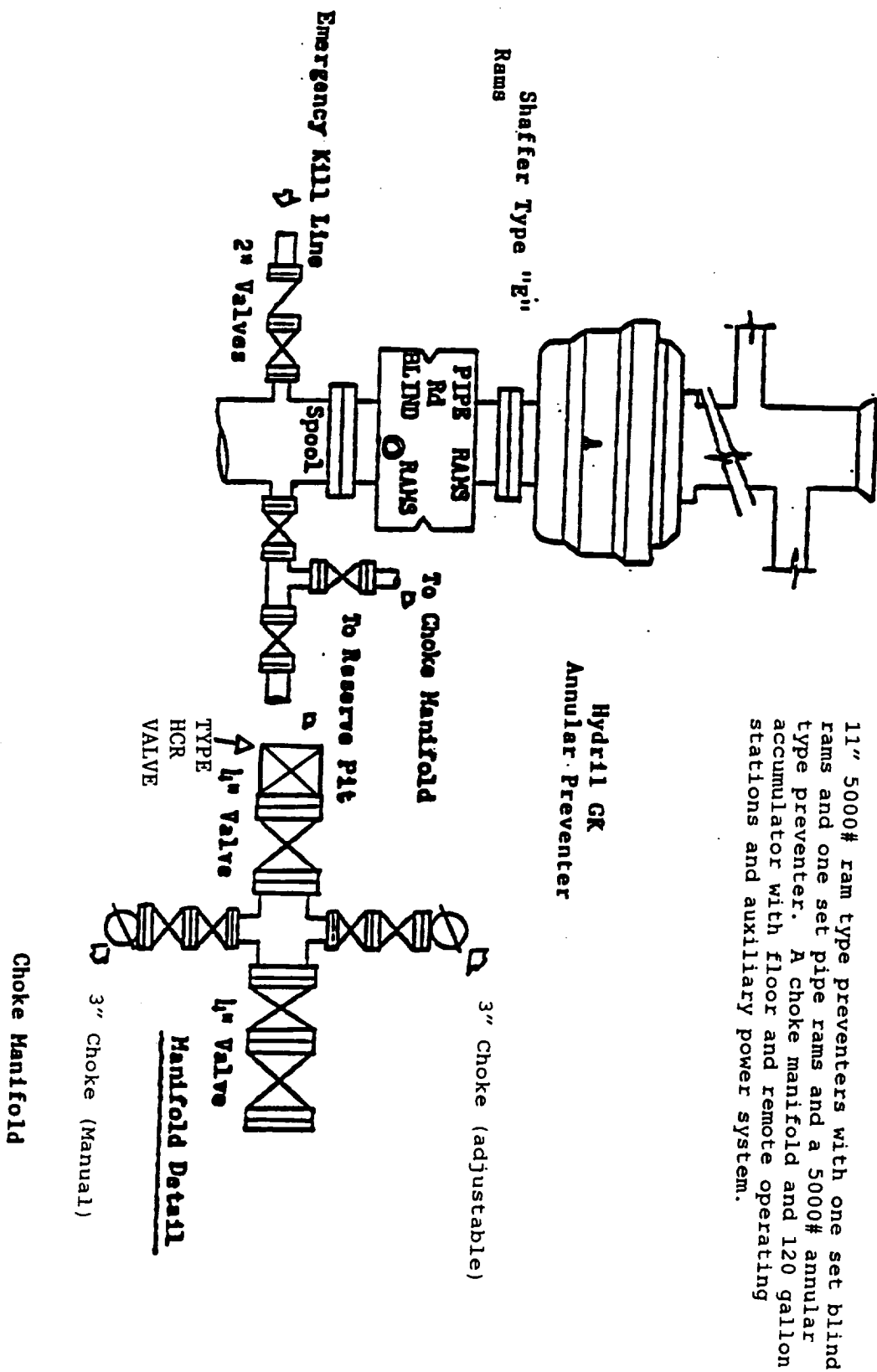
I hereby certify that the well location shown
on this plat was plotted from field notes of
actual surveys made by me or under my
supervision, and that the same is true and
correct to the best of my belief.

October 11, 2001

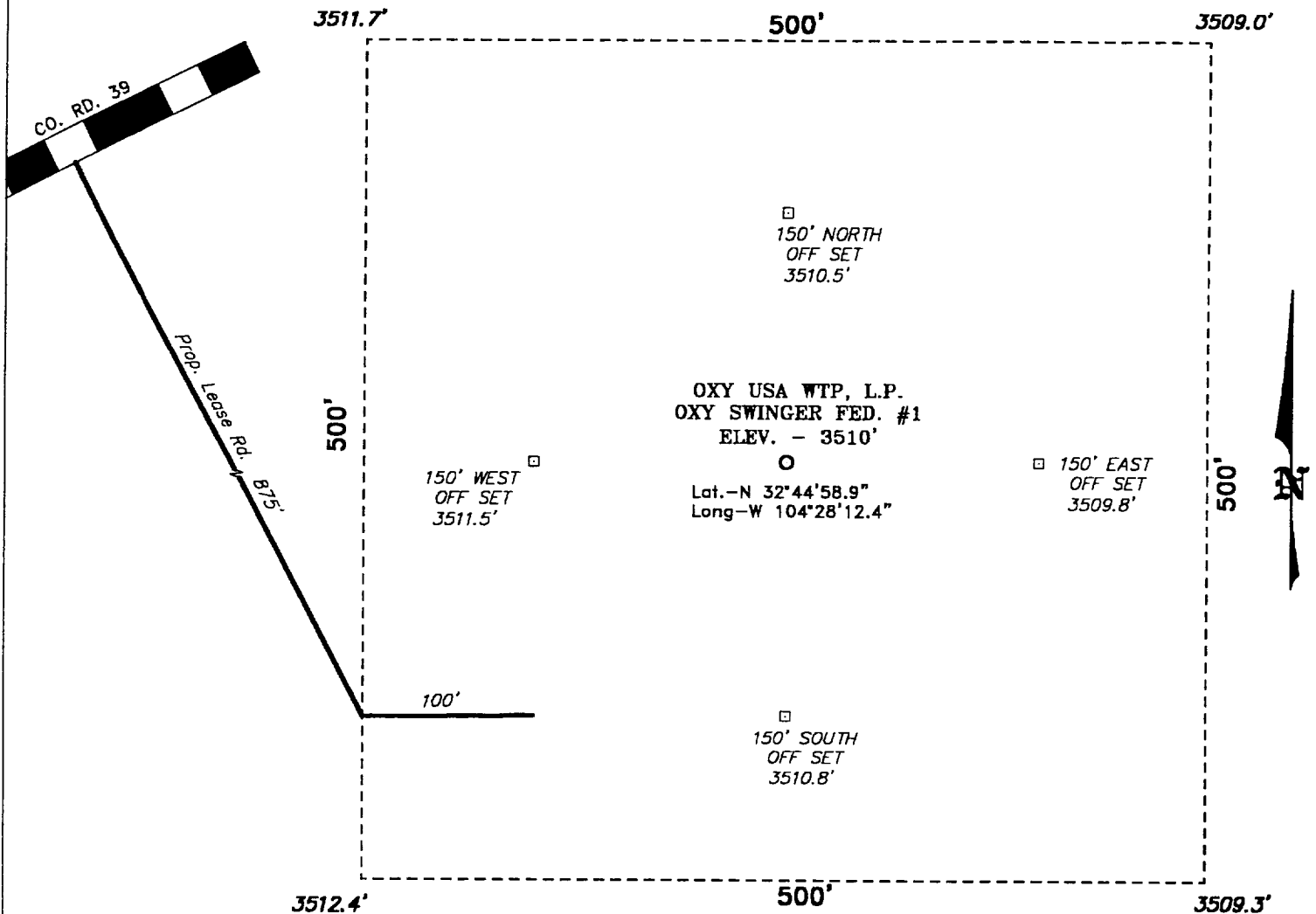
Date Surveyed
Signature & Seal of
Professional Surveyor

W.Q. No. 1975A
Certificate No. Gary L. Jones 7977
BASIN SURVEYS

BLOWOUT PREVENTOR SCHEME

EXHIBIT A

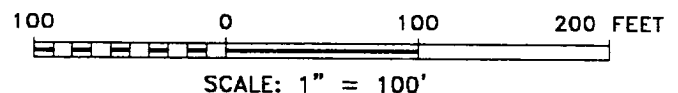


SECTION 15, TOWNSHIP 18 SOUTH, RANGE 25 EAST, N.M.P.M.,
EDDY COUNTY, NEW MEXICO.



Directions to Location:

FROM THE JUNCTION OF US HWY 285 AND CO. RD. 39, GO SOUTHWESTERLY FOR 4.6 MILES TO THE BEGINNING OF THE PROPOSED LEASE ROAD.



BASIN SURVEYS P.O. BOX 1786-HOBBS, NEW MEXICO

W.O. Number: 1975 Drawn By: **K. GOAD**

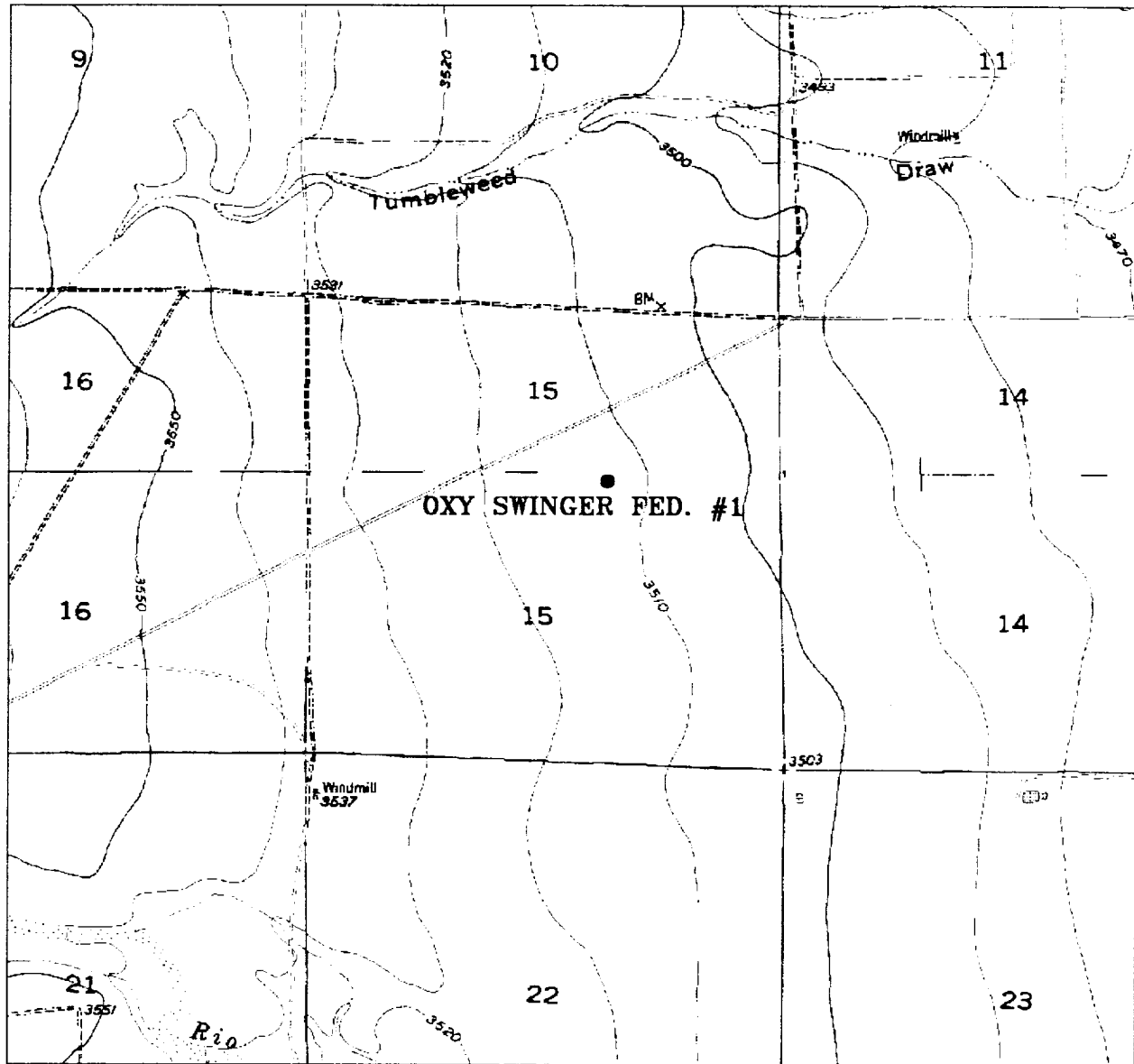
Date: 10-15-2001 Disk: KJG CD#5 - 1975A.DWG

OXY USA WTP, L.P.

REF: OXY SWINGER FED. #1 / Well Pad Topo

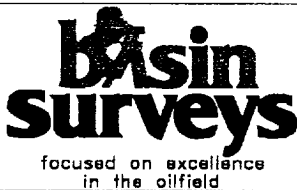
THE OXY SWINGER FED. No. 1 LOCATED 1980' FROM THE NORTH LINE AND 1980' FROM THE EAST LINE OF SECTION 15, TOWNSHIP 18 SOUTH, RANGE 25 EAST, N.M.P.M., EDDY COUNTY, NEW MEXICO.

Survey Date: 10-11-2001 Sheet 1 of 1 Sheets



OXY SWINGER FED. #1

Located at 1980' FNL and 1980' FEL
 Section 15, Township 18 South, Range 25 East,
 N.M.P.M., Eddy County, New Mexico.



P.O. Box 1786
 1120 N. West County Rd.
 Hobbs, New Mexico 88241
 (505) 393-7316 - Office
 (505) 392-3074 - Fax
basinsurveys.com

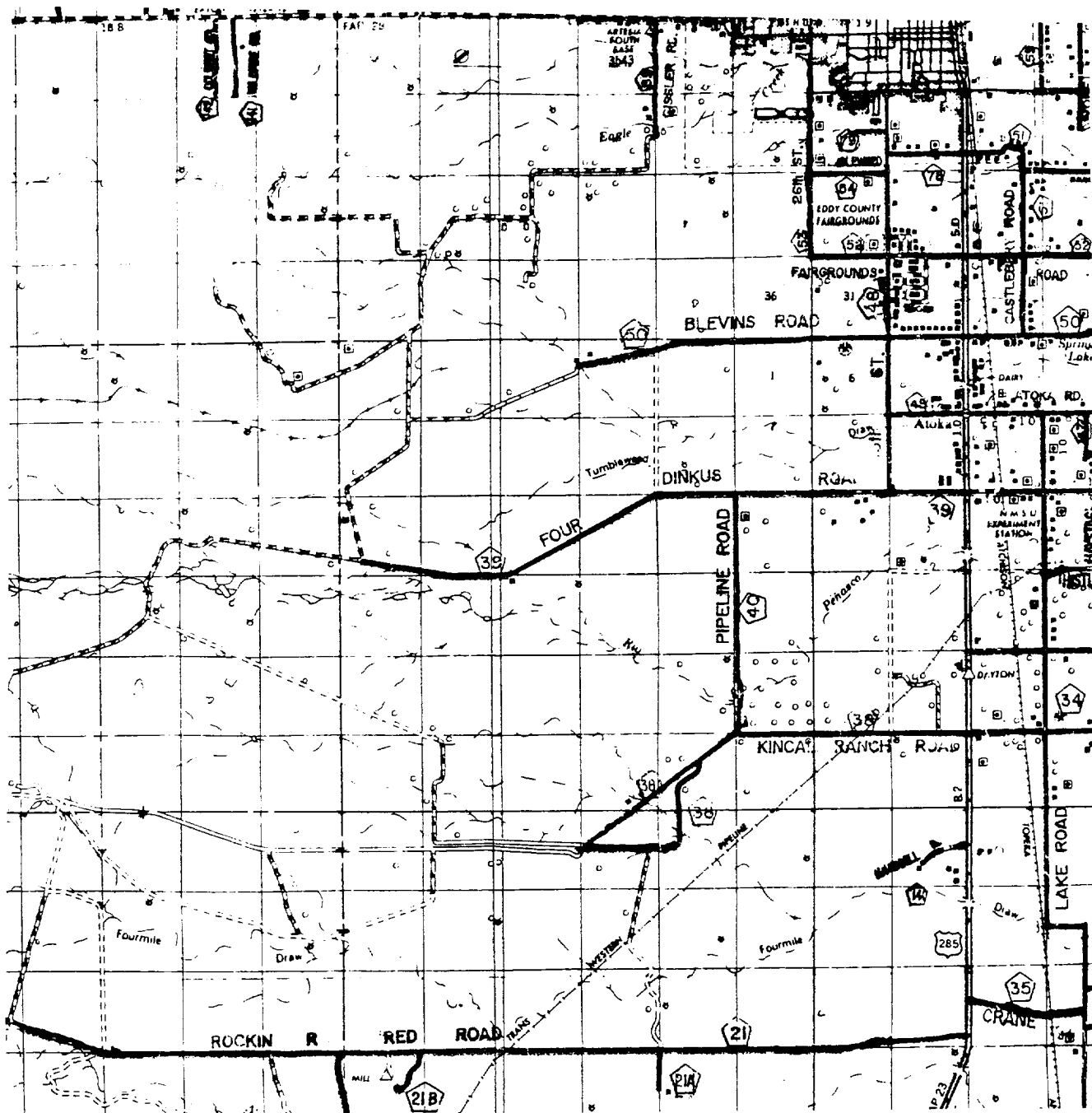
W.O. Number: 1975AA - KJG CD#4

Survey Date: 10-11-2001

Scale: 1" = 2000'

Date: 10-15-2001

OXY USA
 WTP, L.P.



OXY SWINGER FED. #1
 Located at 1980' FNL and 1980' FEL
 Section 15, Township 18 South, Range 25 East,
 N.M.P.M., Eddy County, New Mexico.

basin
surveys
 focused on excellence
 in the oilfield

P.O. Box 1786
 1120 N. West County Rd.
 Hobbs, New Mexico 88241
 (505) 393-7316 - Office
 (505) 392-3074 - Fax
 basin-surveys.com

W.O. Number: 1975AA - KJG CD#4

Survey Date: 10-11-2001

Scale: 1" = 2 MILES

Date: 10-15-2001

OXY USA
WTP, L.P.