

District I
PO Box 1980, Hobbs, NM 88241-1980
District II
811 S. 1st Street, Artesia, NM 88210-2834
District III
1000 Rio Brazos Rd., Aztec, NM 87410
District IV
2040 South Pacheco, Santa Fe, NM 87505

State of New Mexico
Energy, Minerals & Natural Resources Department

OIL CONSERVATION DIVISION
2040 South Pacheco
Santa Fe, NM 87505

C15
B2M
SKYD

Form C-101

Revised October 18, 1994

Instructions on back

Submit to Appropriate District Office

State Lease - 6 Copies

Fee Lease - 5 Copies

RECEIVED
OCD - ARTESIA

☐ AMENDED REPORT

APPLICATION FOR PERMIT TO DRILL, RE-ENTER, DEEPEN, PLUGBACK, OR ADD A ZONE

¹ Operator name and Address OXY USA WTP Limited Partnership P.O. Box 50250 Midland, TX 79710-0250		² OGRID Number 192463
⁴ Property Code 28585	⁵ Property Name OXY Bits State	³ API Number 30-0 015 - 31937
		⁶ Well No. 1

⁷ Surface Location

UL or lot no.	Section	Township	Range	Lot. Idn	Feet from the	North/South Line	Feet from the	East/West line	County
I	36	18S	30E		1797	south	912	east	Eddy

⁸ Proposed Bottom Hole Location If Different From Surface

UL or lot no.	Section	Township	Range	Lot. Idn	Feet from the	North/South Line	Feet from the	East/West line	County
⁹ Proposed Pool 1 Undesignated Morrow					¹⁰ Proposed Pool 2				

¹¹ Work Type Code N	¹² Well Type Code G	¹³ Cable/Rotary R	¹⁴ Lease Type Code S - E7811	¹⁵ Ground Level Elevation 3546'
¹⁶ Multiple No	¹⁷ Proposed Depth 12500'	¹⁸ Formation Morrow	¹⁹ Contractor UTI	²⁰ Spud Date 9/14/01

²¹ Proposed Casing and Cement Program

Hole Size	Casing Size	Casing weight/foot	Setting Depth	Sacks of Cement	Estimated TOC
17-1/2"	13-3/8"	48#	650'	520sx	surface-circulate
12-1/4"	9-5/8"	36#	3200'	850sx	surface-circulate
8-3/4"	5-1/2"	17#	12500'	1300sx	Est. TOC-6000'

²² Describe the proposed program. If this application is to DEEPEN or PLUG BACK give the data on the present productive zone and proposed new productive zone. Describe the blowout prevention program, if any. Use additional sheets if necessary

SEE OTHER SIDE

²³ I hereby certify that the information given above is true and complete to the best of my knowledge and belief.

Signature:

Printed name: **David Stewart**

Title: **Sr. Regulatory Analyst**

BK OIL CONSERVATION DIVISION

Approved by: **ORIGINAL SIGNED BY TIM W. GUM**
DISTRICT II SUPERVISOR

Title:

Approval Date: **AUG 08 2001** Expiration Date: **AUG 08 2002**

OXY Bits State #1
1797 FSL 912 FEL NESE(I) SEC 36 T18S R30E
State Lease No. E-7811

PROPOSED TD: 12500' TVD

BOP PROGRAM: 0' - 650' None

650' - 3200' 13-3/8" 3M annular preventer.

3200' - 12500' 11" 5M blind pipe rams with 5M annular preventer and rotating head below 6900'.

CASING: Surface: 13-3/8" OD 48# H40 ST&C new casing set at 650' 17-1/2" hole

Intermediate: 9-5/8" OD 36# K55 ST&C new casing from 0-3200' 12-1/4" hole

Production: 5-1/2" OD 17# N80 LT&C new casing from 0-12500' 8-3/4" hole

CEMENT: Surface - Circulate cement with 320sx 35:65 POZ/C with 6% Bentonite + 2% CaCl₂ + .25#/sx Cello-Flake followed by 200sx Cl C w/ 2% CaCl₂.

Intermediate - Circulate cement with 650sx 35:65 POZ/C with 6% Bentonite + 2% CaCl₂ + .25 #/sx Cello-Flake followed by 200sx Cl C with 2% CaCl₂.

Production - Cement with 1100sx 15:61:11 POZ/C/CSE with .5% FL-52 + .5% FL-25 + 8#/sx Gilsonite followed by 200sx Cl C with .7% FL-25.

Estimated top of cement is 6000'.

Note: Cement volumes may need to be adjusted to hole caliper.

MUD:

0 - 650' Fresh water/native mud. Lime for pH control (9-10). Paper for seepage. Wt 8.7-9.2 ppg, Vis 32-34 sec

650' - 3200' Fresh/*Brine water. Lime for pH control (10.0-10.5). Paper for seepage. Wt 8.3-9.0/10.0-10.1ppg, Vis 28-29 sec
*Fresh water will be used unless chlorides in the mud system increases to 20000PPM.

3200' - 6000' Fresh water. Lime for pH control (9-9.5). Paper for seepage. Wt 8.4 ppg, Vis 28-29 sec

6000' - 11100' Cut brine. Lime for pH control (10-10.5). Wt 9.6 - 10.0 ppg, Vis 28-29sec

11100' - 12500' Mud up with an Duo Vis/Flo Trol mud system. Wt 10-10.2ppg, Vis 34-38sec, WL<8cc

DISTRICT I
1625 N. French Dr., Hobbs, NM 88240

DISTRICT II
811 South First, Artesia, NM 88210

DISTRICT III
1000 Rio Brazos Rd., Artec, NM 87410

DISTRICT IV
2040 South Pacheco, Santa Fe, NM 87505

State of New Mexico
Energy, Minerals and Natural Resources Department

Form C-102
Revised March 17, 1999

Submit to Appropriate District Office
State Lease - 4 Copies
Fee Lease - 3 Copies

OIL CONSERVATION DIVISION

2040 South Pacheco
Santa Fe, New Mexico 87504-2088

☐ AMENDED REPORT

WELL LOCATION AND ACREAGE DEDICATION PLAT

API Number 30-015-	Pool Code	Pool Name Undesignated Morrow
Property Code	Property Name OXY BITS STATE	Well Number 1
OGRID No. 192463	Operator Name OXY USA WTP Limited Partnership	Elevation 3546'

Surface Location

UL or lot No. 1	Section 36	Township 18 S	Range 30 E	Lot Idn	Feet from the 1797	North/South line SOUTH	Feet from the 912	East/West line EAST	County EDDY
--------------------	---------------	------------------	---------------	---------	-----------------------	---------------------------	----------------------	------------------------	----------------

Bottom Hole Location If Different From Surface

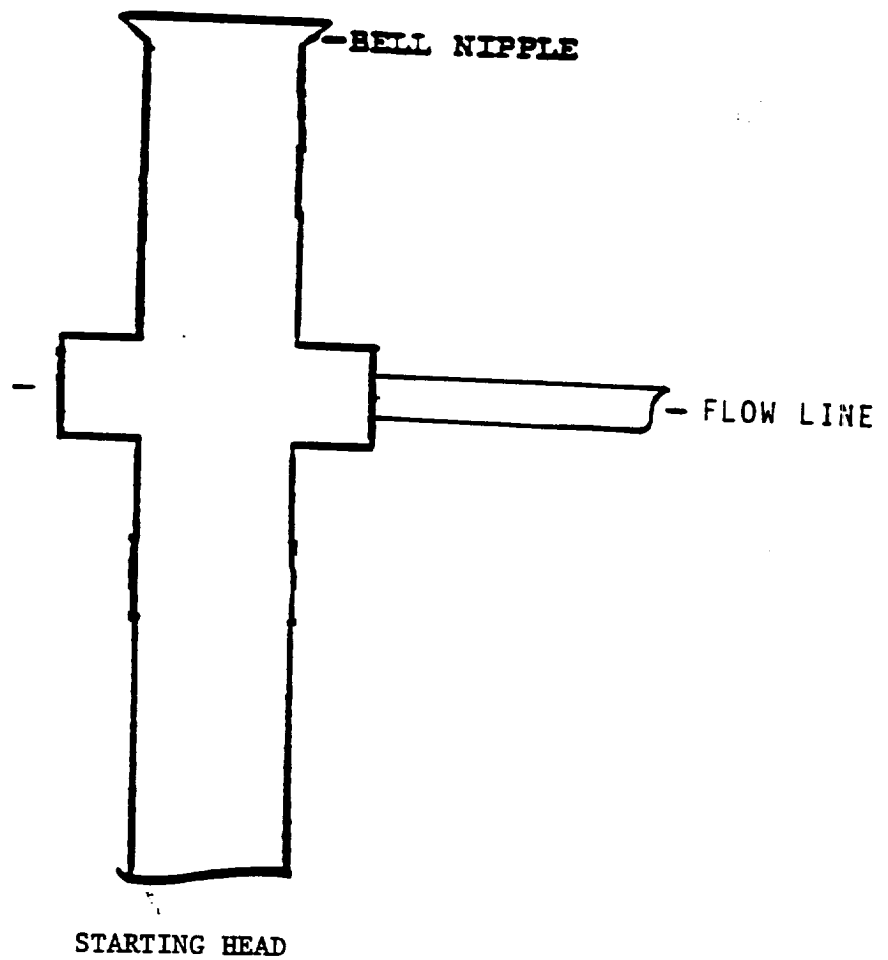
UL or lot No.	Section	Township	Range	Lot Idn	Feet from the	North/South line	Feet from the	East/West line	County
Dedicated Acres 320	Joint or Infill N	Consolidation Code	Order No.						

NO ALLOWABLE WILL BE ASSIGNED TO THIS COMPLETION UNTIL ALL INTERESTS HAVE BEEN CONSOLIDATED
OR A NON-STANDARD UNIT HAS BEEN APPROVED BY THE DIVISION

	RAY WESTALL CULWIN QN Ut-5 3001504580
	Lat - N32°42'05.6" Lon - W103°55'11.6"
3548.9' 3543.1' 3547.9' 3543.2'	1797'
OPERATOR CERTIFICATION	
I hereby certify the the information contained herein is true and complete to the best of my knowledge and belief.	
Signature	
David Stewart	
Printed Name	
Sr. Regulatory Analyst	
Title	
8/6/01	
Date	
SURVEYOR CERTIFICATION	
I hereby certify that the well location shown on this plat was plotted from field notes of actual surveys made by me or under my supervision, and that the same is true and correct to the best of my belief.	
January 11, 2001	
Date Surveyed	
Signature & Seal of Professional Surveyor	
W.O. No. 0725A	
Certificate No. Gary Jones 7977	
BASIN SURVEYS	

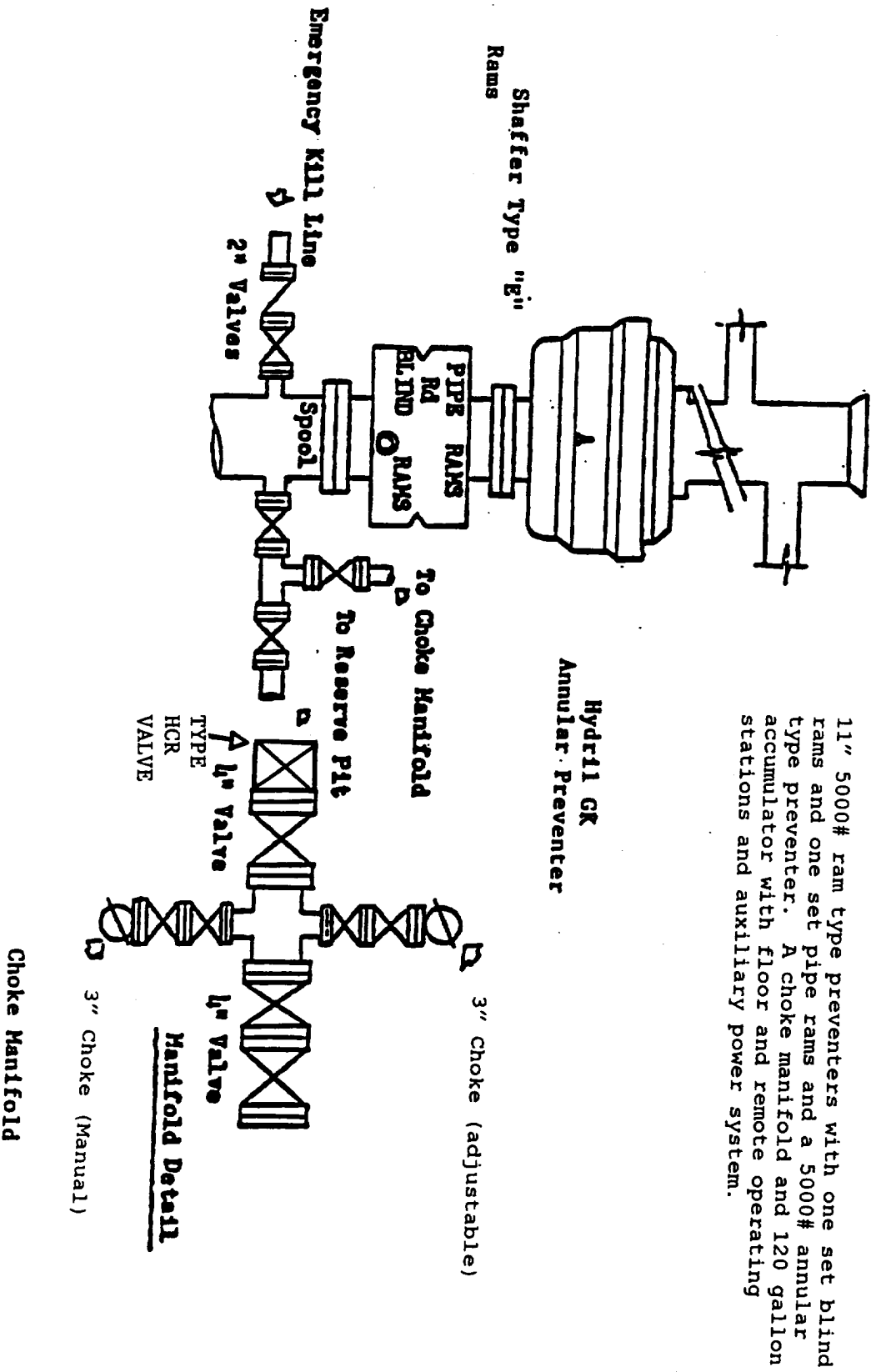
EXHIBIT A

ANNULAR PREVENTOR
TO BE USED AS DIVERTOR ONLY

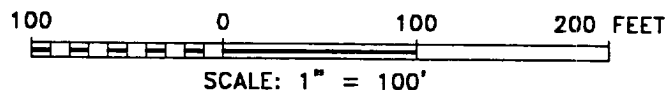
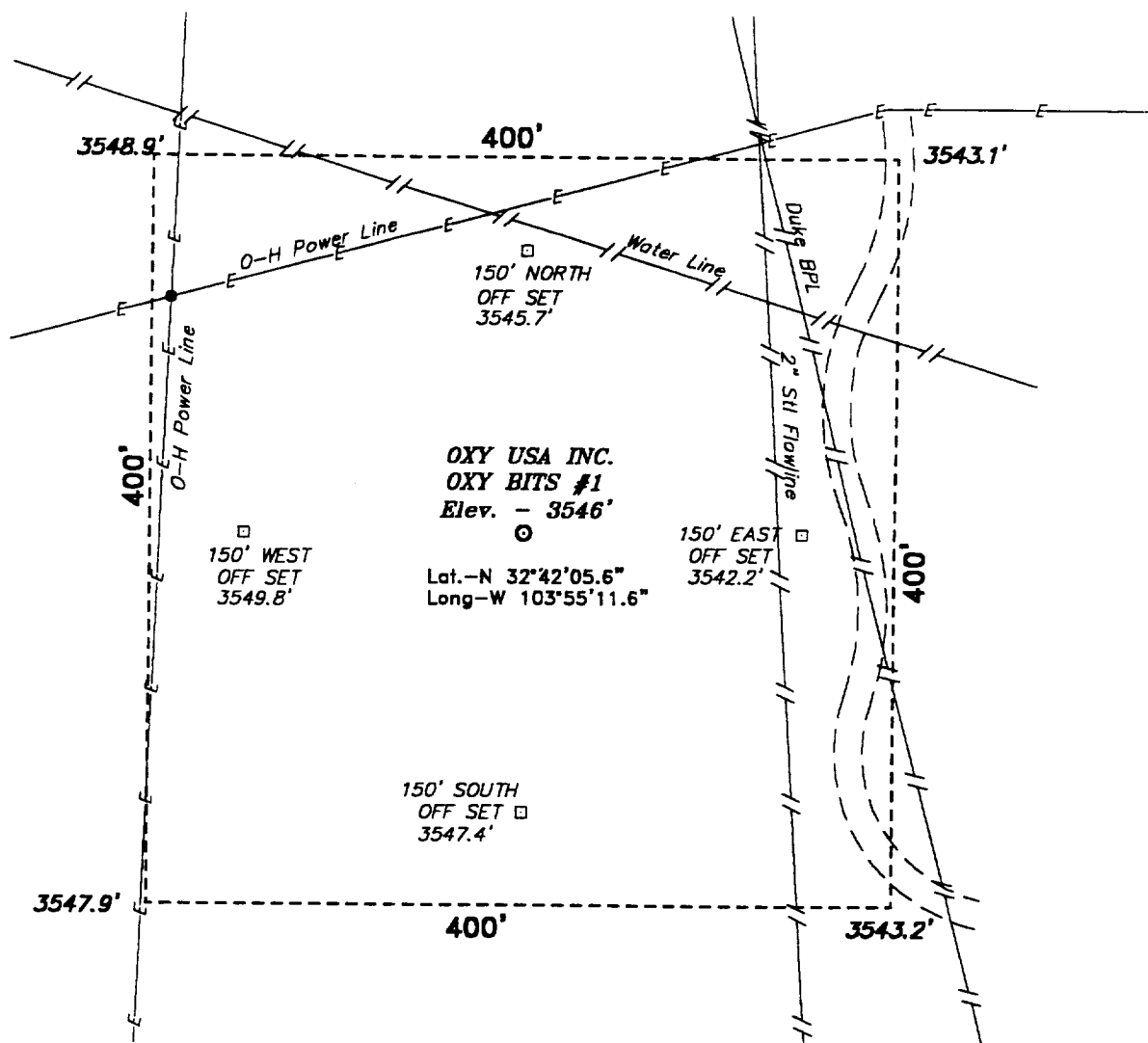


BLOWOUT PREVENTOR SCHEME

EXHIBIT A



SECTION 36, TOWNSHIP 18 SOUTH, RANGE 30 EAST, N.M.P.M.,
EDDY COUNTY, NEW MEXICO.



Directions to Location:

FROM THE JUNCTION OF CO. RD. 222 AND CO. RD. 250, GO WEST ON CO. RD. 250 APPROX. 2.5 MILES TO A LEASE ROAD; THENCE SOUTH ON LEASE ROAD APPROX. 1400 FEET TO A "Y", GO RIGHT AT "Y" APPROX. 2000 FEET TO A POINT ON THE PROPOSED WELL PAD.

BASIN SURVEYS P.O. BOX 1786-HOBBS, NEW MEXICO

W.O. Number: 0721 Drawn By: **K. GOAD**

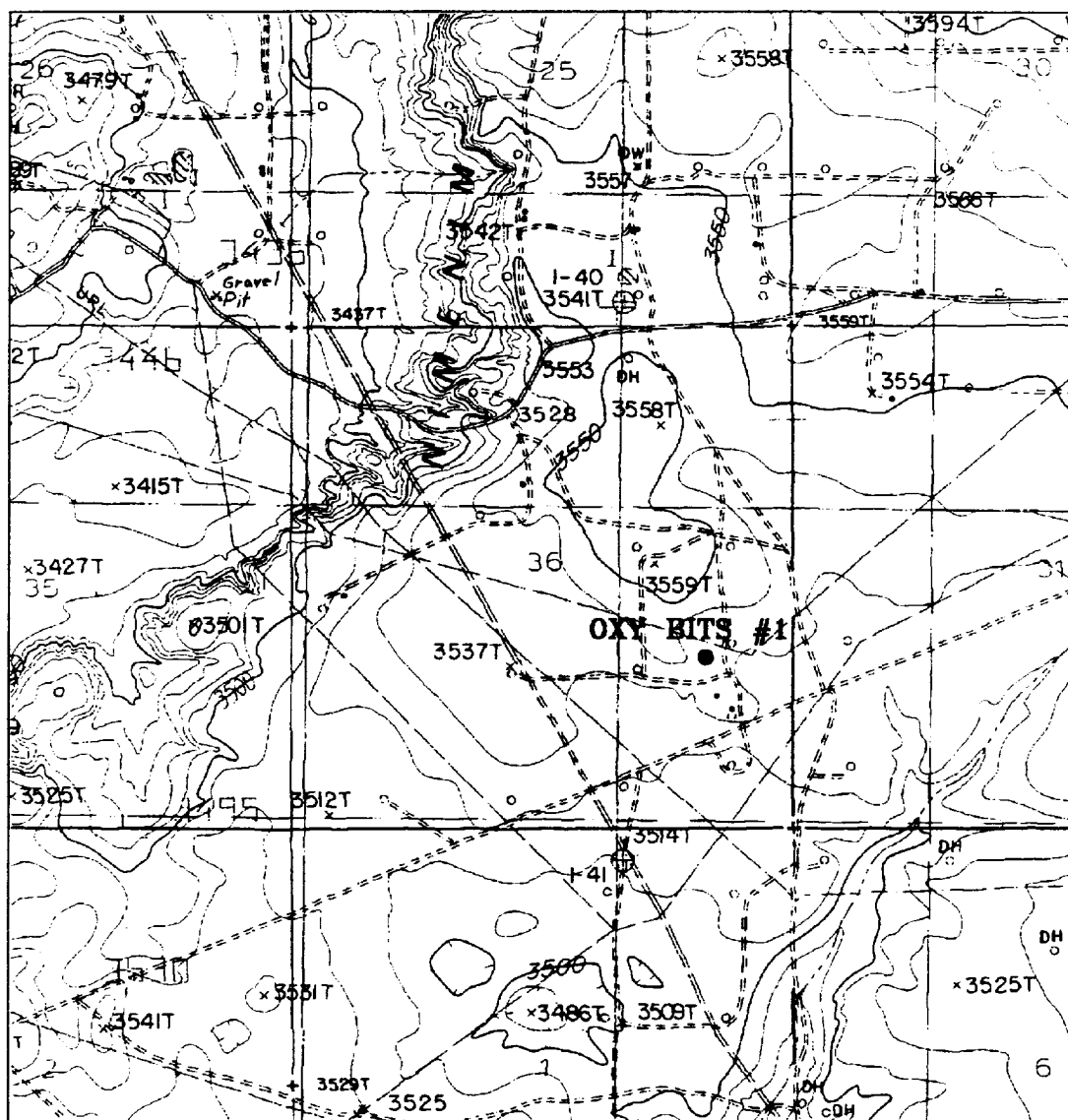
Date: 01-12-2001 Disk: KJG CD#3 - 0721.DWG

Oxy USA Inc.

REF: Oxy Bits No. 1 / Well Pad Topo

THE OXY BITS No. 1 LOCATED 1797' FROM
THE SOUTH LINE AND 912' FROM THE EAST LINE OF
SECTION 36, TOWNSHIP 18 SOUTH, RANGE 30 EAST,
N.M.P.M., EDDY COUNTY, NEW MEXICO.

Survey Date: 01-11-2001 Sheet 1 of 1 Sheets



OXY BITS #1

Located at 1797' FSL and 912' FEL
 Section 36, Township 18 South, Range 30 East,
 N.M.P.M., Eddy County, New Mexico.

**basin
surveys**

focused on excellence
in the oilfield

P.O. Box 1786
 1120 N. West County Rd.
 Hobbs, New Mexico 88241
 (505) 393-7316 - Office
 (505) 392-3074 - Fax
basinsurveys.com

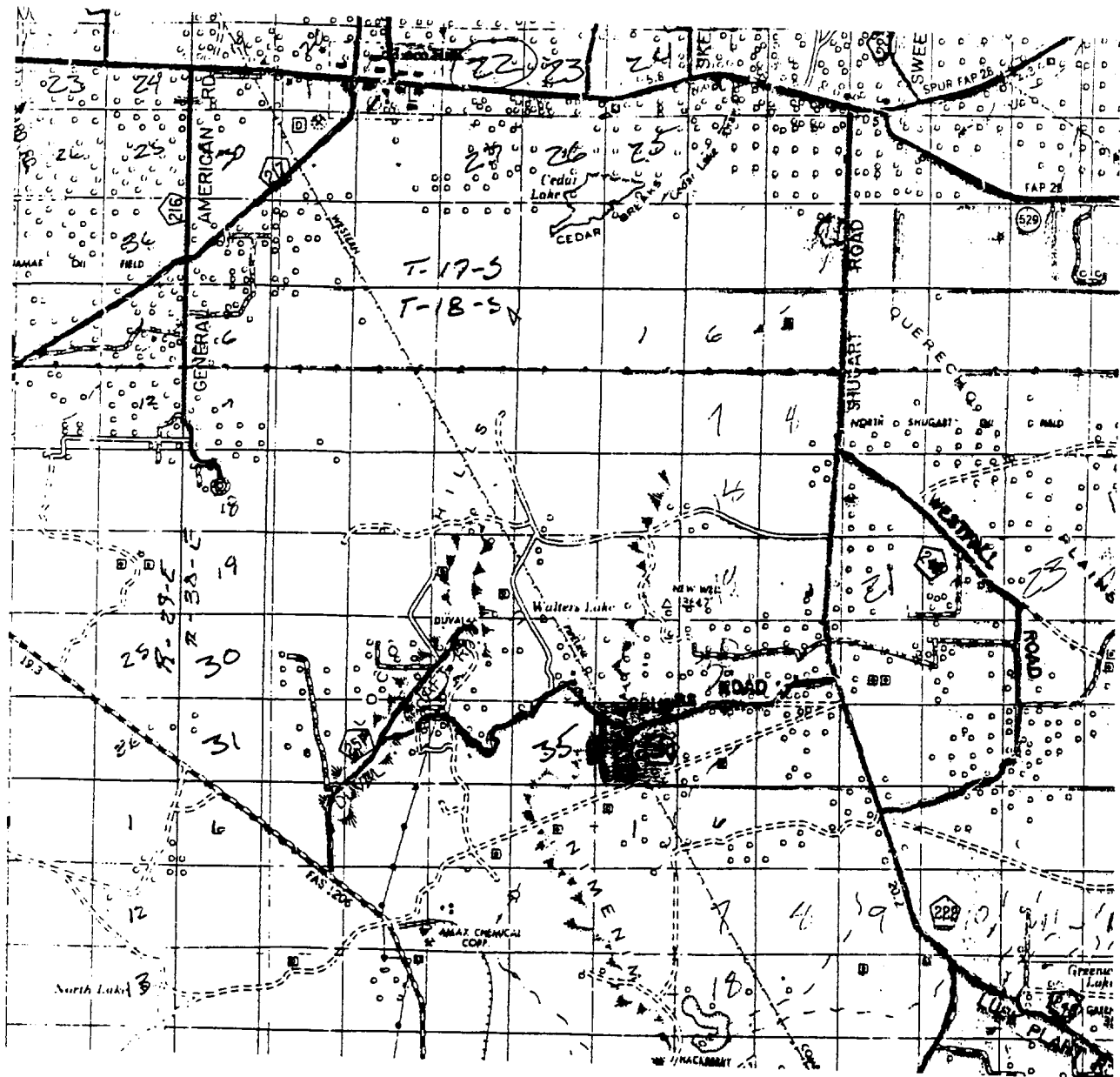
W.O. Number: 0721AA - KJG CD#3

Survey Date: 01-11-2001

Scale: 1" = 2000'

Date: 01-12-2001

OXY USA INC.



OXY BITS #1

Located at 1797' FSL and 912' FEL
 Section 36, Township 18 South, Range 30 East,
 N.M.P.M., Eddy County, New Mexico.

basin
surveys

focused on excellence
 in the oilfield

P.O. Box 1786
 1120 N. West County Rd.
 Hobbs, New Mexico 88241
 (505) 393-7316 - Office
 (505) 392-3074 - Fax
 basinsurveys.com

W.O. Number: 0721AA - KJG CD#3

Survey Date: 01-11-2001

Scale: 1" = 2 MILES

Date: 01-12-2001

OXY USA INC.