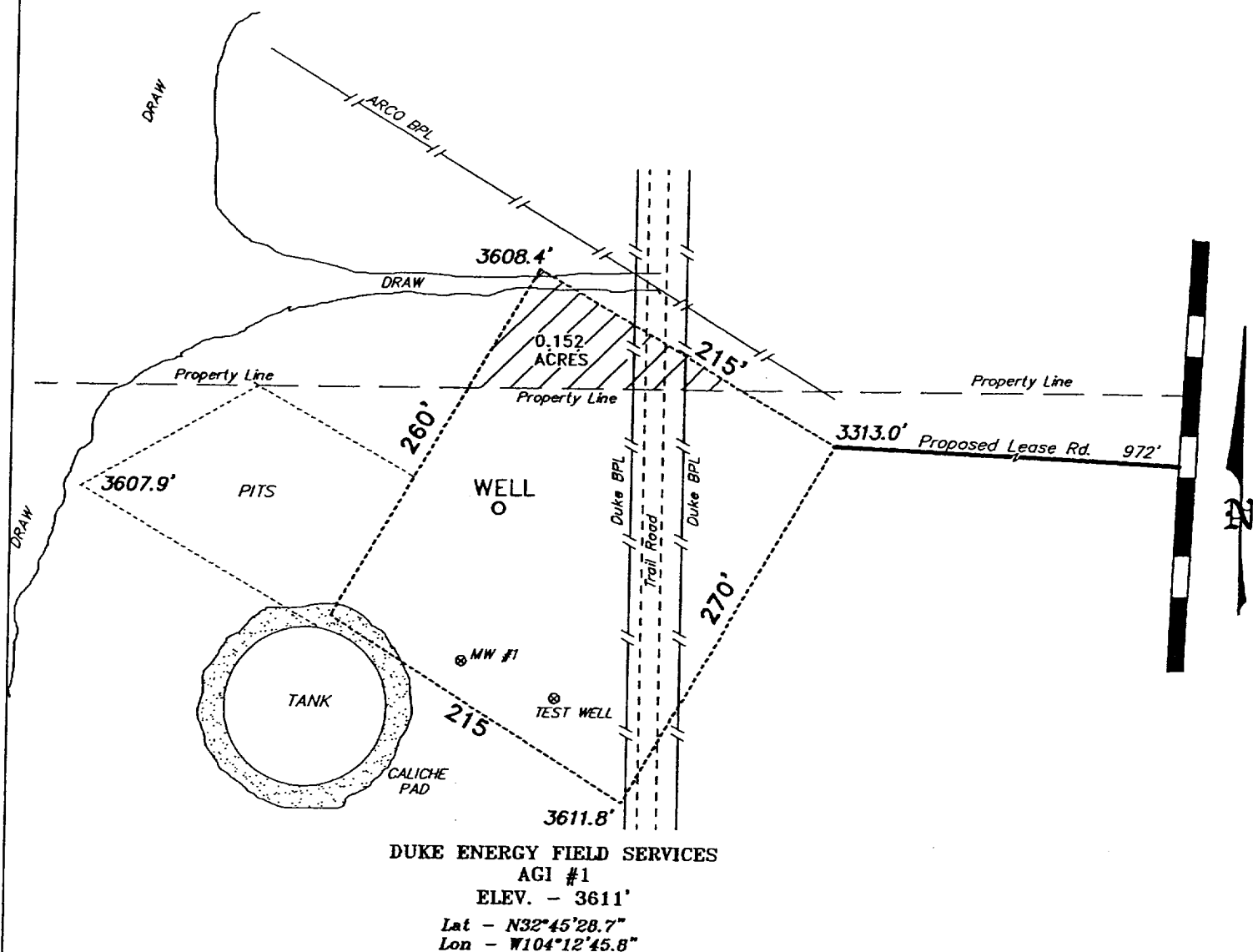


SECTION 7, TOWNSHIP 18 SOUTH, RANGE 28 EAST, N.M.P.M.,
EDDY COUNTY, NEW MEXICO.



100 0 100 200 FEET
SCALE: 1" = 100'

DUKE ENERGY FIELD SERVICES

REF: AGI No. 1 / Well Pad Topo

THE AGI No. 1 LOCATED 1232' FROM THE
SOUTH LINE AND 1927' FROM THE EAST LINE OF
SECTION 7, TOWNSHIP 18 SOUTH, RANGE 28 EAST,
N.M.P.M., EDDY COUNTY, NEW MEXICO.

BASIN SURVEYS P.O. BOX 1786 - HOBBS, NEW MEXICO

W.O. Number: 2471

Drawn By: K. GOAD

Date: 04-22-2002

Disk: KJG CD#6 - 2471A.DWG

Survey Date: 04-18-2002

Sheet 1 of 1 Sheets