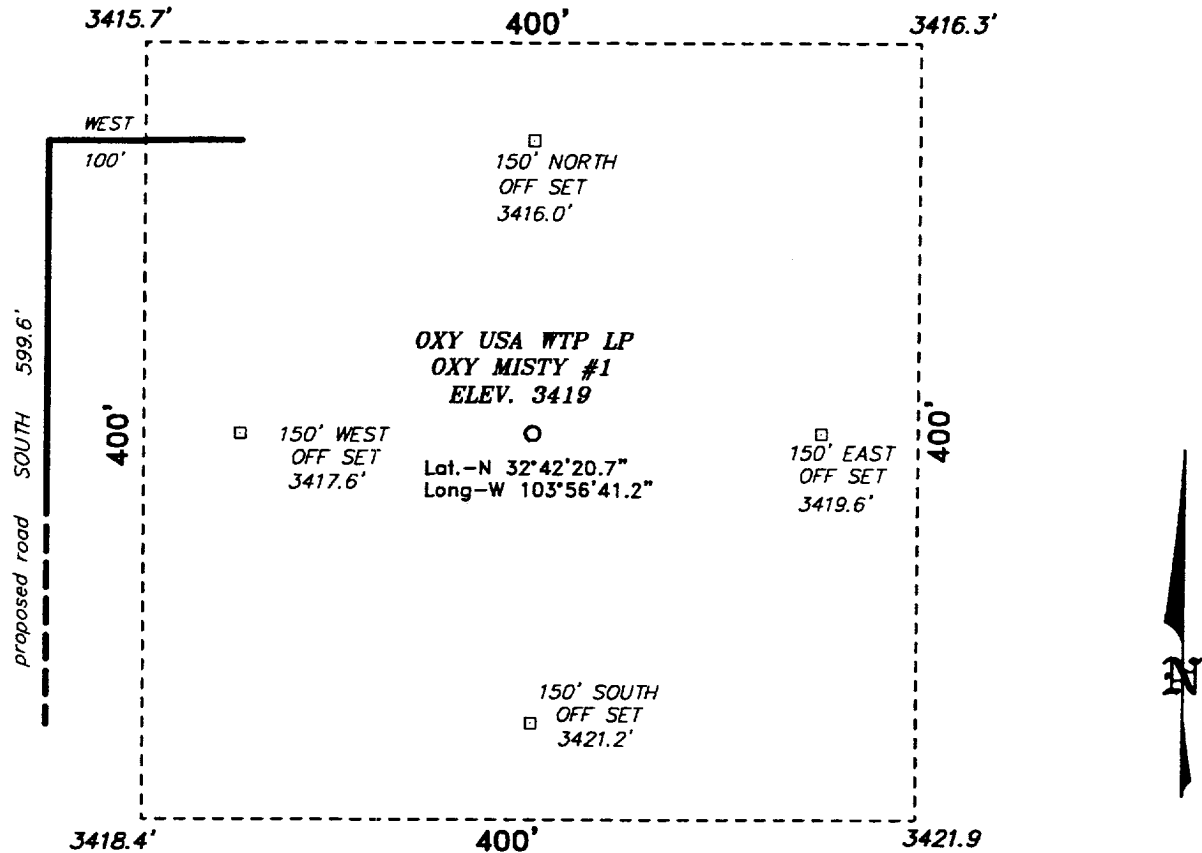


**SECTION 35, TOWNSHIP 18 SOUTH, RANGE 30 EAST, N.M.P.M.,  
EDDY COUNTY, NEW MEXICO.**



**Directions to Location:**

FROM THE JUNCTION OF CO. RD. 222 AND 250 GO WEST ON 222 APPROX. 4 MILES TO A POINT WHICH LIES APPROX. TO PROPOSED ROAD TO THE WELL LOCATION.



SCALE: 1" = 100'

**BASIN SURVEYS** P.O. BOX 1786 - HOBBS, NEW MEXICO

W.O. Number: 2479

Drawn By: **JAMES PRESLEY**

Date: 05-01-02

Disk: JLP #1 - 2479A.DWG

**OXY USA INC.**

REF: OXY MISTY #1 / Well Pad Topo

THE OXY MISTY No. 1 LOCATED 1980' FROM  
THE NORTH LINE AND 1980' FROM THE WEST LINE OF  
SECTION 30, TOWNSHIP 18 SOUTH, RANGE 30 EAST,  
N.M.P.M., EDDY COUNTY, NEW MEXICO.

Survey Date: 04/29/02

Sheet 1 of 1 Sheets