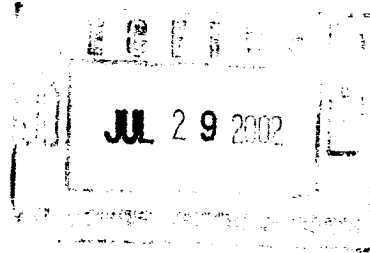


221134586

NSL

8/18/02



July 24, 2002

New Mexico Energy, Minerals and  
Natural Resources Department/OCD  
1220 South Saint Francis  
Santa Fe, New Mexico 88505

Attn: Mr. Mike Stogner

Re: Approval of Location  
W/2 Section 25, T18S, R27E  
Eddy County, New Mexico  
BEACH PROSPECT

Dear Mr. Stogner:

Per your conversation with Don McClung, PAR is requesting your approval of a location as shown on the enclosed plat.

As you can see from Form C-102, the location is 2310' from the North line of Section 25. An orthodox location puts the location very close to an existing power line. Par Minerals Corporation has a 100% leasehold interest in the W/2 of said Section 25. Being all one lease (State of New Mexico 648), and by moving the location south, we would only be encroaching on our interest.

Should you have any questions or need to discuss this, please do not hesitate to contact me at the number below.

Very truly yours,

PAR MINERALS CORPORATION

A handwritten signature in cursive script, appearing to read "Randall G. Rogers".

Randall G. Rogers, CPL  
Vice President-Land

RGR/mak  
Encl.

STRICT I  
25 N. French Dr., Hobbs, NM 88240  
STRICT II  
1 South First, Artesia, NM 88210  
STRICT III  
00 Rio Brazos Rd., Aztec, NM 87410  
STRICT IV  
40 South Pacheco, Santa Fe, NM 87505

State of New Mexico  
Energy, Minerals and Natural Resources Department

Form C-102  
Revised March 17, 1999

Submit to Appropriate District Office  
State Lease - 4 Copies  
Fee Lease - 3 Copies

OIL CONSERVATION DIVISION

2040 South Pacheco  
Santa Fe, New Mexico 87504-2088

☐ AMENDED REPORT

WELL LOCATION AND ACREAGE DEDICATION PLAT

API Number	Pool Code	Pool Name
Property Code	Property Name STATE "25"	Well Number 1
OGRID No.	Operator Name PAR MINERALS CORPORATION	Elevation 3559'

Surface Location

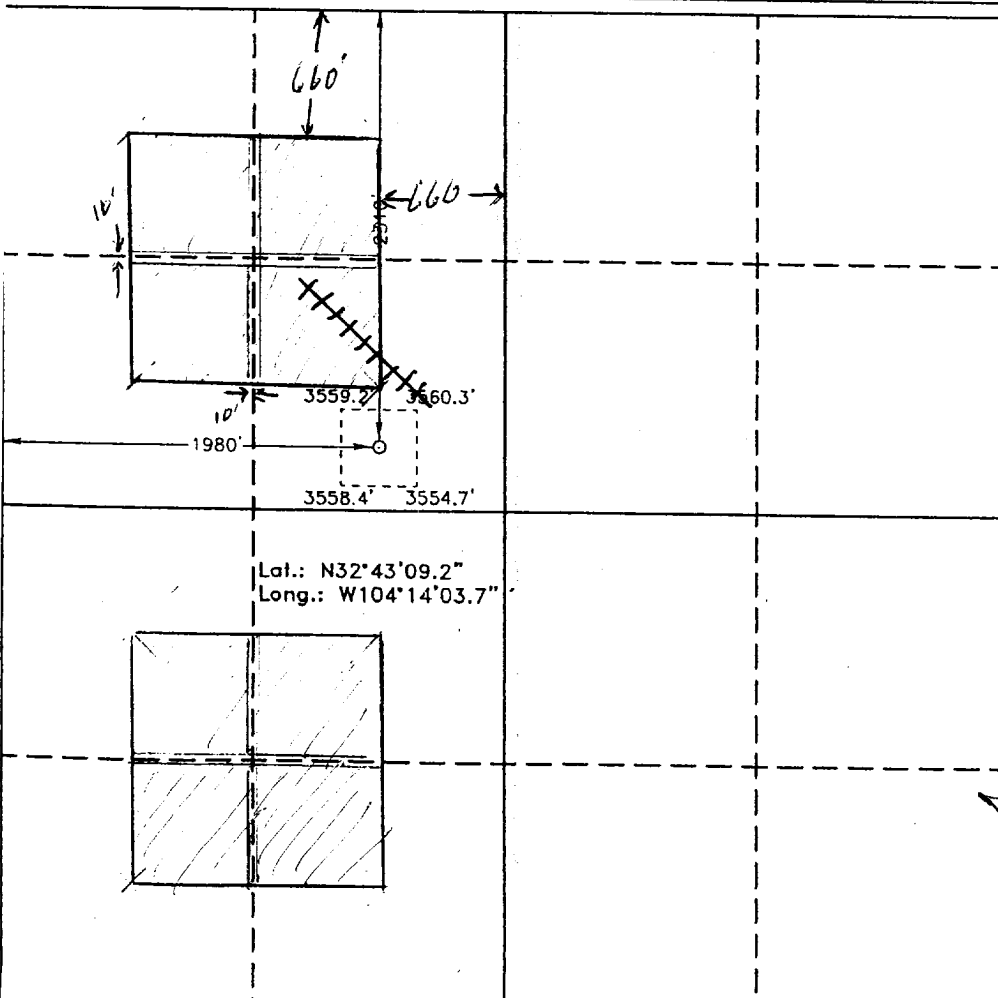
UL or lot No.	Section	Township	Range	Lot Idn	Feet from the	North/South line	Feet from the	East/West line	County
F	25	18 S	27 E		2310	NORTH	1980	WEST	EDDY

Bottom Hole Location If Different From Surface

UL or lot No.	Section	Township	Range	Lot Idn	Feet from the	North/South line	Feet from the	East/West line	County

Dedicated Acres	Joint or Infill	Consolidation Code	Order No.

NO ALLOWABLE WILL BE ASSIGNED TO THIS COMPLETION UNTIL ALL INTERESTS HAVE BEEN CONSOLIDATED  
OR A NON-STANDARD UNIT HAS BEEN APPROVED BY THE DIVISION



OPERATOR CERTIFICATION

I hereby certify the the information  
contained herein is true and complete to the  
best of my knowledge and belief.

*Walter Thiel*  
Signature

Printed Name

Title

Date

SURVEYOR CERTIFICATION

I hereby certify that the well location shown  
on this plat was plotted from field notes of  
actual surveys made by me or under my  
supervision and that the same is true and  
correct to the best of my belief.

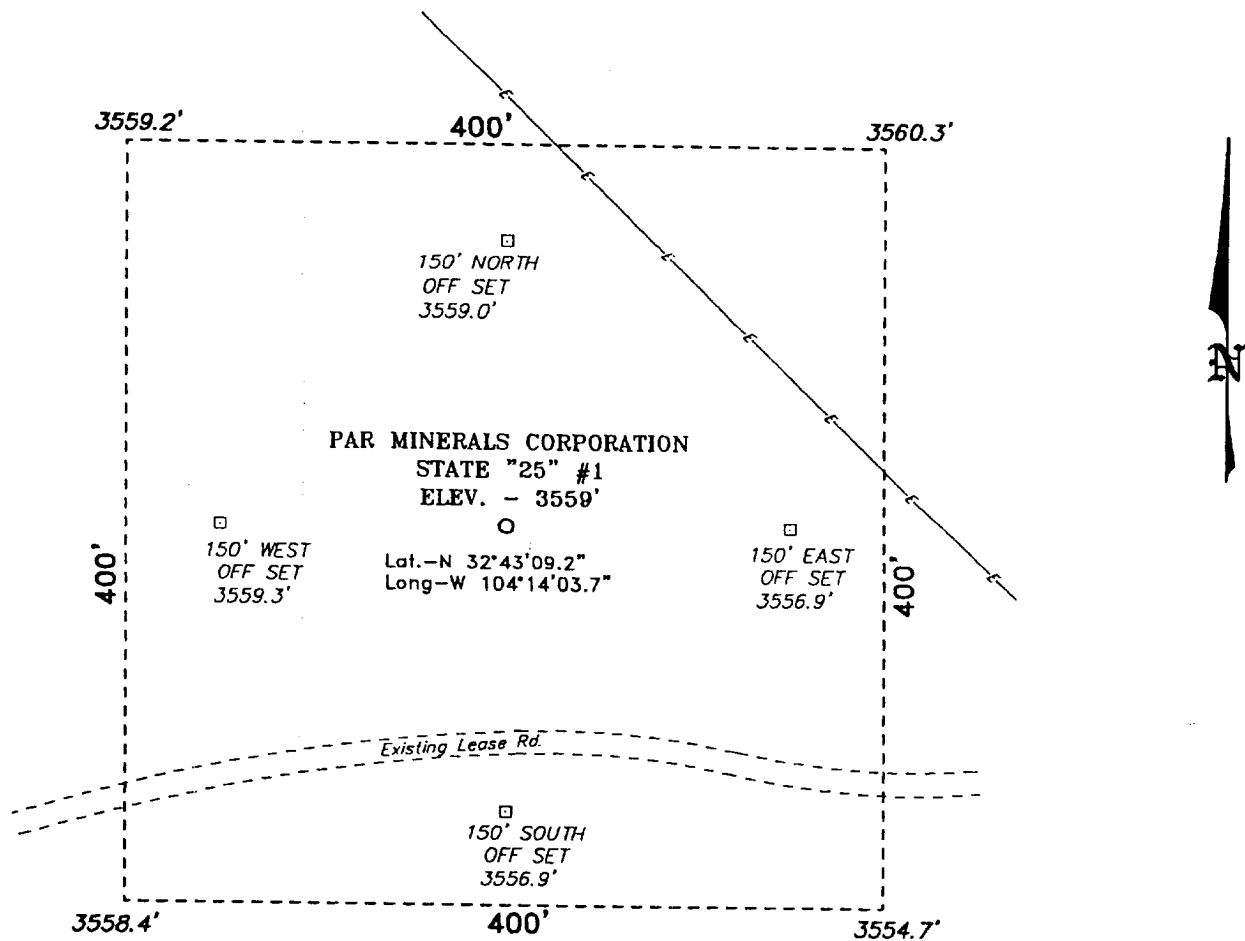
JULY 15, 2002

Date Surveyed

Signature & Seal of  
Professional Surveyor

NEW MEXICO  
W.O. No. 2818  
Certificate No. Gary Jones 7977

SECTION 25, TOWNSHIP 18 SOUTH, RANGE 27 EAST, N.M.P.M.,  
EDDY COUNTY, NEW MEXICO.



100                      0                      100                      200 FEET

SCALE: 1" = 100'

Directions to Location:

FROM THE JUNCTION OF CO. RD. 206 & CO. RD. 234, GO SOUTHWEST ON CO. RD. 234 FOR 0.7 MILE; THENCE NORTHWEST AROUND HOUSE FOR 0.3 MILE; THENCE WEST FOR 0.2 MILE; THENCE SOUTH FOR 0.2 MILE; THENCE SOUTHWEST FOR 0.3 MILE TO LOCATION.

**PAR MINERALS CORP.**

REF: STATE "25" #1 / Well Pod Topo

THE STATE "25" No. 1 LOCATED 2310' FROM  
THE NORTH LINE AND 1980' FROM THE WEST LINE OF  
SECTION 25, TOWNSHIP 18 SOUTH, RANGE 27 EAST,  
N.M.P.M., EDDY COUNTY, NEW MEXICO.

**BASIN SURVEYS** P.O. BOX 1736-HOBBS, NEW MEXICO

V.O. Number: 2618

Drawn By: K. GOAD