

OF COPIES RECEIVED	
DISTRIBUTION	
NTA FE	1
E	1
G.S.	2
ND OFFICE	1
ERATOR	1

NEW MEXICO OIL CONSERVATION COMMISSION

RECEIVED

JUN 27 1980

O. C. D.

ARTESIA, OFFICE

Form C-101
Revised 1-1-65

5A. Indicate Type of Lease

STATE ☒ FEE ☐

5. State Oil & Gas Lease No.

L-6419

APPLICATION FOR PERMIT TO DRILL, DEEPEN, OR PLUG BACK

Type of Work

DRILL ☒ Re-entry

DEEPEN ☐

PLUG BACK ☐

Type of Well

WELL ☒

GAS WELL ☐

OTHER ☐

SINGLE ZONE ☐

MULTIPLE ZONE ☐

Name of Operator

Collier Energy, Inc.

Address of Operator

P. O. Box 798, Artesia, New Mexico 88210

Location of Well

UNIT LETTER L LOCATED 1650 FEET FROM THE South LINE

990 FEET FROM THE West LINE OF SEC. 32 TWP. 19S RGE. 27E NMPM

7. Unit Agreement Name

8. Farm or Lease Name

Maggie

9. Well No.

#1

10. Field and Pool, or Wildcat

McMillan 7-Rivers Queen

12. County
Eddy

19. Proposed Depth

800'

19A. Formation

Queen

20. Rotary or C.T.

C.T.

Elevations (Show whether DF, RT, etc.)

3344.3 GL

21A. Kind & Status Plug. Bond
Statewide

21B. Drilling Contractor
Powco Drilling Co.

22. Approx. Date Work will start
June 30, 1980

PROPOSED CASING AND CEMENT PROGRAM

SIZE OF HOLE	SIZE OF CASING	WEIGHT PER FOOT	SETTING DEPTH	SACKS OF CEMENT	EST. TOP
10"	8 5/8"	32#	200'	100 sxs.	currently cemented

Re-entry June 30, 1980 proposal:

Plan to re-enter and drill down to approximately 800'.
Complete open hole section from 200' to approximately 650'.

Formerly Magnolia Petroleum Co.
New Mexico "A" - Well #2
Drilled 12/29/53
P+A 8/26/59

APPROVAL VALID
FOR 90 DAYS UNLESS
DRILLING COMMENCED,

EXPIRES, 9/30/80

ABOVE SPACE DESCRIBE PROPOSED PROGRAM: IF PROPOSAL IS TO DEEPEN OR PLUG BACK, GIVE DATA ON PRESENT PRODUCTIVE ZONE AND PROPOSED NEW PRODUCTION ZONE, GIVE BLOWOUT PREVENTER PROGRAM, IF ANY.

I hereby certify that the information above is true and complete to the best of my knowledge and belief.

by Ruberto Barrios Title Secretary Date 6/26/80

(This space for State Use)

APPROVED BY Mike Williams TITLE OIL AND GAS INSPECTOR DATE JUN 30 1980

CONDITIONS OF APPROVAL, IF ANY:

NEW MEXICO OIL CONSERVATION COMMISSION
WELL LOCATION AND ACREAGE DEDICATION PLAT

Form C-102
Supersedes C-128
Effective 1-1-65

All distances must be from the outer boundaries of the Section.

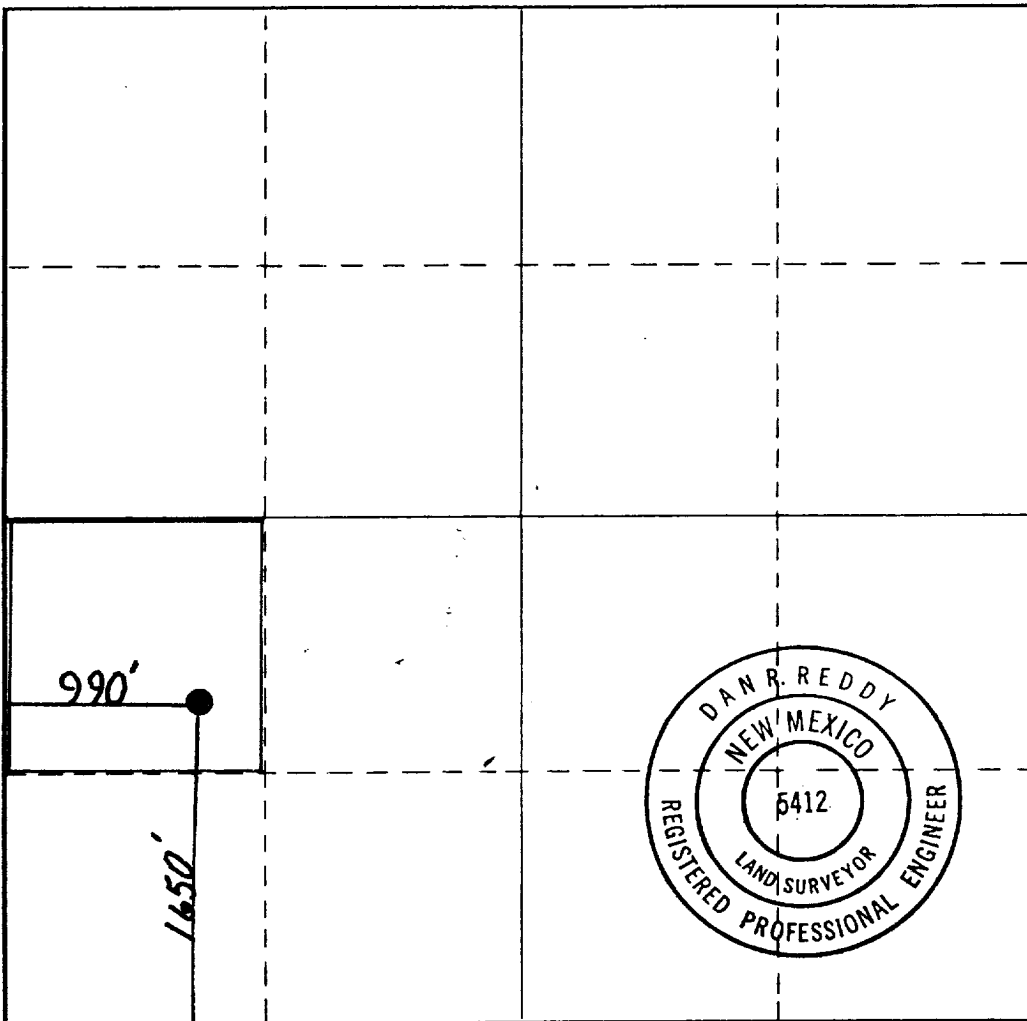
Operator COLLIER ENERGY INC.			Lease Maggie		Well No. #1
Unit Letter L	Section 32	Township 19 South	Range 27 East	County Eddy	
Actual Footage Location of Well: 1650 feet from the South line and 990 feet from the West line					
Ground Level Elev. 3344.3	Producing Formation Queen		Pool McMillan Seven Rivers Queen		Dedicated Acreage: 40 Acres

1. Outline the acreage dedicated to the subject well by colored pencil or hachure marks on the plat below.
2. If more than one lease is dedicated to the well, outline each and identify the ownership thereof (both as to working interest and royalty).
3. If more than one lease of different ownership is dedicated to the well, have the interests of all owners been consolidated by communitization, unitization, force-pooling, etc?

☐ Yes ☐ No If answer is "yes," type of consolidation _____

If answer is "no," list the owners and tract descriptions which have actually been consolidated. (Use reverse side of this form if necessary.) _____

No allowable will be assigned to the well until all interests have been consolidated (by communitization, unitization, forced-pooling, or otherwise) or until a non-standard unit, eliminating such interests, has been approved by the Commission.



CERTIFICATION

I hereby certify that the information contained herein is true and complete to the best of my knowledge and belief.

Cheri Monk

Name

Cheri Monk

Position

Administrative Assistant

Company

Collier Energy, Inc.

Date

6-26-80

I hereby certify that the well location shown on this plat was plotted from field notes of actual surveys made by me or under my supervision, and that the same is true and correct to the best of my knowledge and belief.

Date Surveyed

June 25, 1980

Registered Professional Engineer and/or Land Surveyor

Dan R. Reddy

Certificate No.

NM PE&LS #5412

0 330 660 990 1320 1650 1980 2310 2640 2000 1500 1000 500 0