

30-015-62304

(Form C-101)
(Revised 7/1/52)

NEW MEXICO OIL CONSERVATION COMMISSION
Santa Fe, New Mexico

NOTICE OF INTENTION TO DRILL OR RECOMPLETE

Notice must be given to the District Office of the Oil Conservation Commission and approval obtained before drilling or recompletion begins. If changes in the proposed plan are considered advisable, a copy of this notice showing such changes will be returned to the sender. Submit this notice in QUINTUPLICATE. One copy will be returned following approval. See additional instructions in Rules and Regulations of the Commission.

Artesia, New Mexico
(Place)

September 8, 1953
(Date)

OIL CONSERVATION COMMISSION
SANTA FE, NEW MEXICO

Gentlemen:

You are hereby notified that it is our intention to commence the (Drilling) (Recompletion) of a well to be known as

S. P. Yates
(Company or Operator)

State J
(Lease)

Well No. 1

E
(Unit)

The well is

located 660 feet from the West line and 1980 feet from the

North line of Section 28, T. 19S, R. 28E, NMPM.

(GIVE LOCATION FROM SECTION LINE) Wildcat Pool, Eddy County

If State Land the Oil and Gas Lease is No. B-10716

If patented land the owner is

Address

We propose to drill well with drilling equipment as follows: cable tools

The status of plugging bond is blanket

Drilling Contractor own tools

We intend to complete this well in the Queen formation at an approximate depth of 1900 feet.

CASING PROGRAM

We propose to use the following strings of Casing and to cement them as indicated:

Size of Hole	Size of Casing	Weight per Foot	New or Second Hand	Depth	Sacks Cement
10-3/4"	8-5/8"	24#	S.H.	350'	200 Landed

If changes in the above plans become advisable we will notify you immediately.

ADDITIONAL INFORMATION (If recompletion give full details of proposed plan of work.)

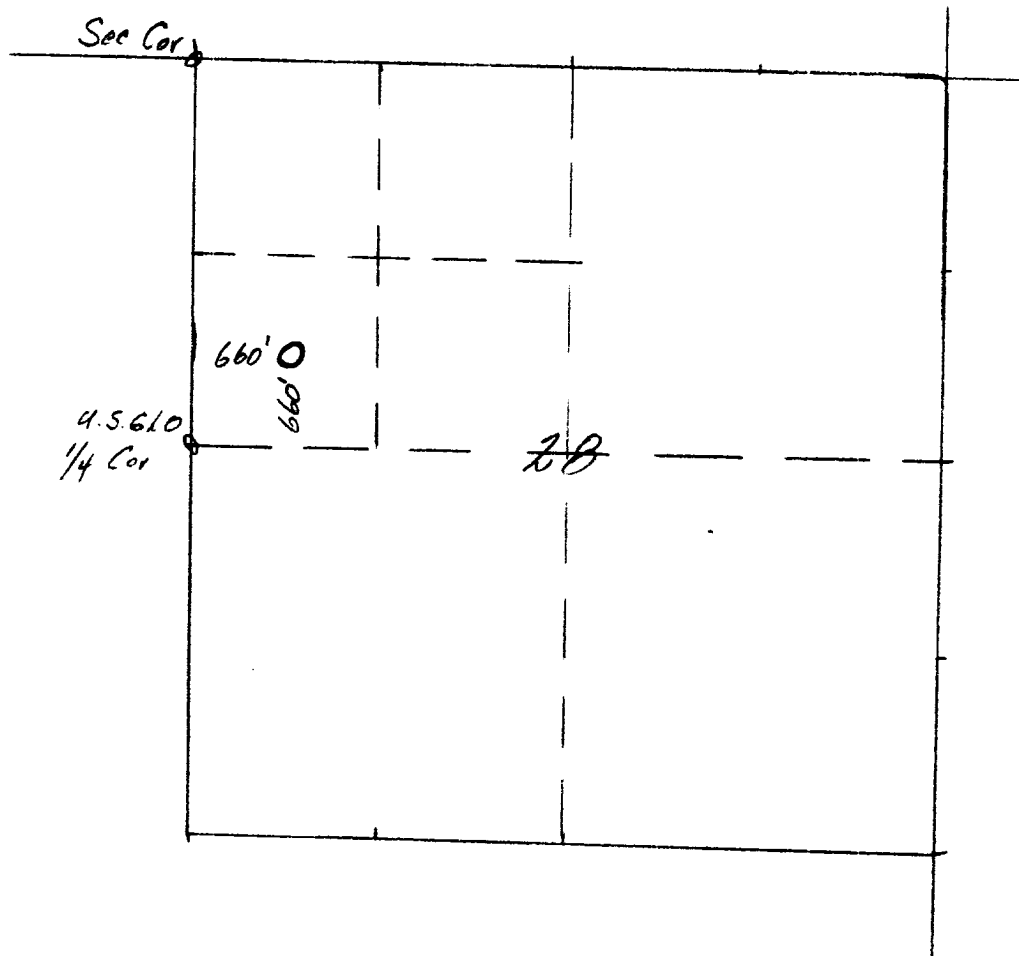
Approved....., 19.....
Except as follows:
If completed as a producing oil or gas well,
a casing and cementing program must be set
up to comply with Rule 107 of the OCC
Rules & Regulations.
OIL CONSERVATION COMMISSION
By *L. A. Hancock*
Title

Sincerely yours,
S. P. Yates
(Company or Operator)
By *S. P. Yates*
Position Owner
Send Communications regarding well to
Name S. P. Yates
Address 309 Carper Building
Artesia, New Mexico

STAKING PLAT

S. P. YATES ---STATE J #1

660' from West and 1980' from North lines of Section 28-19S. -28E.
Eddy County.



This is to certify that the undersigned is a registered land surveyor and made the survey as shown on this plat and the same is true and correct to the best of my knowledge and belief.

Vilas P. Sheldon
Vilas P. Sheldon

100-77-100-35, 2, 3

1980-1981
1982-1983
1984-1985
1986-1987
1988-1989
1990-1991
1992-1993
1994-1995
1996-1997
1998-1999
2000-2001
2002-2003
2004-2005
2006-2007
2008-2009
2010-2011
2012-2013
2014-2015
2016-2017
2018-2019
2020-2021
2022-2023
2024-2025
2026-2027
2028-2029
2030-2031
2032-2033
2034-2035
2036-2037
2038-2039
2040-2041
2042-2043
2044-2045
2046-2047
2048-2049
2050-2051
2052-2053
2054-2055
2056-2057
2058-2059
2060-2061
2062-2063
2064-2065
2066-2067
2068-2069
2070-2071
2072-2073
2074-2075
2076-2077
2078-2079
2080-2081
2082-2083
2084-2085
2086-2087
2088-2089
2090-2091
2092-2093
2094-2095
2096-2097
2098-2099
2100-2101
2102-2103
2104-2105
2106-2107
2108-2109
2110-2111
2112-2113
2114-2115
2116-2117
2118-2119
2120-2121
2122-2123
2124-2125
2126-2127
2128-2129
2130-2131
2132-2133
2134-2135
2136-2137
2138-2139
2140-2141
2142-2143
2144-2145
2146-2147
2148-2149
2150-2151
2152-2153
2154-2155
2156-2157
2158-2159
2160-2161
2162-2163
2164-2165
2166-2167
2168-2169
2170-2171
2172-2173
2174-2175
2176-2177
2178-2179
2180-2181
2182-2183
2184-2185
2186-2187
2188-2189
2190-2191
2192-2193
2194-2195
2196-2197
2198-2199
2200-2201
2202-2203
2204-2205
2206-2207
2208-2209
2210-2211
2212-2213
2214-2215
2216-2217
2218-2219
2220-2221
2222-2223
2224-2225
2226-2227
2228-2229
2230-2231
2232-2233
2234-2235
2236-2237
2238-2239
2240-2241
2242-2243
2244-2245
2246-2247
2248-2249
2250-2251
2252-2253
2254-2255
2256-2257
2258-2259
2260-2261
2262-2263
2264-2265
2266-2267
2268-2269
2270-2271
2272-2273
2274-2275
2276-2277
2278-2279
2280-2281
2282-2283
2284-2285
2286-2287
2288-2289
2290-2291
2292-2293
2294-2295
2296-2297
2298-2299
2300-2301
2302-2303
2304-2305
2306-2307
2308-2309
2310-2311
2312-2313
2314-2315
2316-2317
2318-2319
2320-2321
2322-2323
2324-2325
2326-2327
2328-2329
2330-2331
2332-2333
2334-2335
2336-2337
2338-2339
2340-2341
2342-2343
2344-2345
2346-2347
2348-2349
2350-2351
2352-2353
2354-2355
2356-2357
2358-2359
2360-2361
2362-2363
2364-2365
2366-2367
2368-2369
2370-2371
2372-2373
2374-2375
2376-2377
2378-2379
2380-2381
2382-2383
2384-2385
2386-2387
2388-2389
2390-2391
2392-2393
2394-2395
2396-2397
2398-2399
2400-2401
2402-2403
2404-2405
2406-2407
2408-2409
2410-2411
2412-2413
2414-2415
2416-2417
2418-2419
2420-2421
2422-2423
2424-2425
2426-2427
2428-2429
2430-2431
2432-2433
2434-2435
2436-2437
2438-2439
2440-2441
2442-2443
2444-2445
2446-2447
2448-2449
2450-2451
2452-2453
2454-2455
2456-2457
2458-2459
2460-2461
2462-2463
2464-2465
2466-2467
2468-2469
2470-2471
2472-2473
2474-2475
2476-2477
2478-2479
2480-2481
2482-2483
2484-2485
2486-2487
2488-2489
2490-2491
2492-2493
2494-2495
2496-2497
2498-2499
2500-2501
2502-2503
2504-2505
2506-2507
2508-2509
2510-2511
2512-2513
2514-2515
2516-2517
2518-2519
2520-2521
2522-2523
2524-2525
2526-2527
2528-2529
2530-2531
2532-2533
2534-2535
2536-2537
2538-2539
2540-2541
2542-2543
2544-2545
2546-2547
2548-2549
2550-2551
2552-2553
2554-2555
2556-2557
2558-2559
2560-2561
2562-2563
2564-2565
2566-2567
2568-2569
2570-2571
2572-2573
2574-2575
2576-2577
2578-2579
2580-2581
2582-2583
2584-2585
2586-2587
2588-2589
2590-2591
2592-2593
2594-2595
2596-2597
2598-2599
2600-2601
2602-2603
2604-2605
2606-2607
2608-2609
2610-2611
2612-2613
2614-2615
2616-2617
2618-2619
2620-2621
2622-2623
2624-2625
2626-2627
2628-2629
2630-2631
2632-2633
2634-2635
2636-2637
2638-2639
2640-2641
2642-2643
2644-2645
2646-2647
2648-2649
2650-2651
2652-2653
2654-2655
2656-2657
2658-2659
2660-2661
2662-2663
2664-2665
2666-2667
2668-2669
2670-2671
2672-2673
2674-2675
2676-2677
2678-2679
2680-2681
2682-2683
2684-2685
2686-2687
2688-2689
2690-2691
2692-2693
2694-2695
2696-2697
2698-2699
2700-2701
2702-2703
2704-2705
2706-2707
2708-2709
2710-2711
2712-2713
2714-2715
2716-2717
2718-2719
2720-2721
2722-2723
27

and later, it is a long run and the difficulty of the AT
to find a way to the survey as shown on the map. You are
to find the way to the survey as shown on the map. You are
to find the way to the survey as shown on the map. You are

[Handwritten signature]