

NEW MEXICO OIL CONSERVATION COMMISSION
WELL LOCATION AND ACREAGE DEDICATION PLAT

FORM C-128
Revised 5/1/57

SEE INSTRUCTIONS FOR COMPLETING THIS FORM ON THE REVERSE SIDE

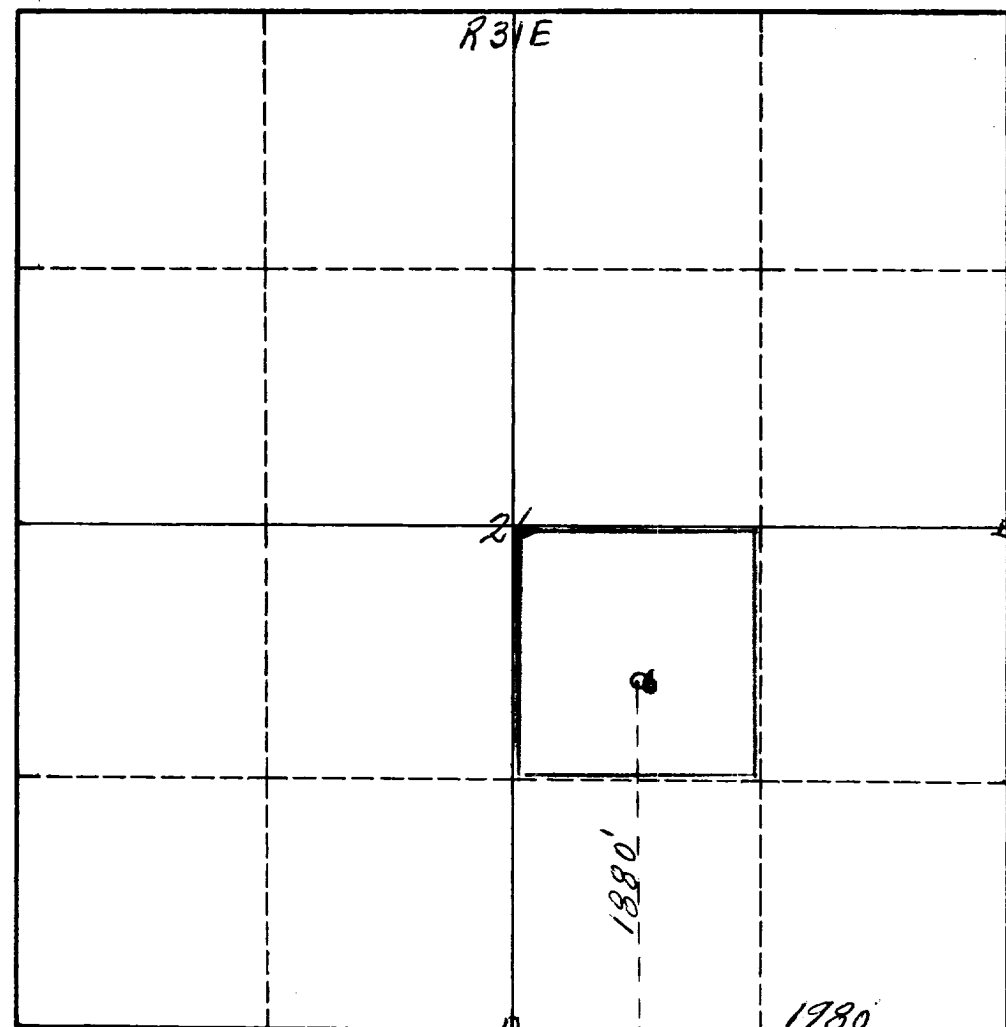
SECTION A

Operator Continental Oil Company			Lease Greenwood Unit		Well No. 6
Unit Letter J	Section 26	Township 18S	Range 31E	County Reddy	
Actual Footage Location of Well: 1880 feet from the South line and 1980 feet from the East line					
Ground Level Elev. 3666	Producing Formation Pennsylvanian		Pool Shugart Suture Pennsylvanian		Dedicated Acreage: 640 Acres

1. Is the Operator the only owner in the dedicated acreage outlined on the plat below? YES _____ NO **X**. ("Owner" means the person who has the right to drill into and to produce from any pool and to appropriate the production either for himself or for himself and another. (65-3-29 (e) NMSA 1935 Comp.)
2. If the answer to question one is "no," have the interests of all the owners been consolidated by communitization agreement or otherwise? YES **X** NO _____. If answer is "yes," Type of Consolidation **Communitization Agreement**
3. If the answer to question two is "no," list all the owners and their respective interests below:

Owner	Land Description

SECTION B



CERTIFICATION

I hereby certify that the information in SECTION A above is true and complete to the best of my knowledge and belief.

Name
G. H. Hesser
Position
District Superintendent
Company
Continental Oil Company
Date
September 14, 1959

I hereby certify that the well location shown on the plat in SECTION B was plotted from field notes of actual surveys made by me or under my supervision, and that the same is true and correct to the best of my knowledge and belief.

Date Surveyed
September 15th 1959
Registered Professional Engineer
and/or Land Surveyor
James H. Brown
Certificate No.
542

INSTRUCTIONS FOR COMPLETION OF FORM C-128

1. Operator shall furnish and certify to the information called for in Section A.
2. Operator shall outline the dedicated acreage for *both* oil and gas wells on the plat in Section B.
3. A registered professional engineer or land surveyor registered in the State of New Mexico or approved by the Commission shall show on the plat the location of the well and certify this information in the space provided.
4. All distances shown on the plat must be from the outer boundaries of the Section.
5. If additional space is needed for listing owners and their respective interests as required in question 3 of Section A, please use space below.

OIL CONSERVATION COMMISSION			
ARTESIA DISTRICT OFFICE			
No. Copies	Received	Date	Remarks
OPERATOR			
SANTA FE			
PRODUCTION OFFICE			
STATE LAND OFFICE			
U. S. G. S.			
TRANSPORTER			
FILE			
BUREAU OF MINES			