

Submit 3 Copies
to Appropriate
District Office

State of New Mexico
Energy, Minerals and Natural Resources Department

Form C-103
Revised 1-1-89

DISTRICT I
P.O. Box 1980, Hobbs, NM 88240

DISTRICT II
P.O. Drawer DD, Artesia, NM 88210

DISTRICT III
1000 Rio Brazos Rd., Aztec, NM 87410

OIL CONSERVATION DIVISION

P.O. Box 2088
Santa Fe, New Mexico 87504-2088

RECEIVED

JUN 20 1991

WELL API NO.
30 0566700

5. Indicate Type of Lease
STATE ☒ FEE ☐

6. State Oil & Gas Lease No.
E-10001

7. Lease Name or Unit Agreement Name

New Mexico Y State

8. Well No.

1

9. Pool name or Wildcat

Shugart (Yates, 7 RV, Queen, GRBG)

SUNDRY NOTICES AND REPORTS ON WELLS
(DO NOT USE THIS FORM FOR PROPOSALS TO DRILL OR TO DEEPEN OR PLUG BACK TO A
DIFFERENT RESERVOIR. USE "APPLICATION FOR PERMIT"
(FORM C-101) FOR SUCH PROPOSALS.)

1. Type of Well:
OIL WELL ☒ GAS WELL ☐ OTHER

2. Name of Operator
Southland Royalty Company

3. Address of Operator
P.O. Box 51810, Midland, TX 79710-1810

4. Well Location
Unit Letter G : 1650 Feet From The North Line and 2310 Feet From The East Line

Section 32 Township 18-S Range 31-E NMPM Eddy County

10. Elevation (Show whether DF, RKB, RT, GR, etc.)

3580' G

11. Check Appropriate Box to Indicate Nature of Notice, Report, or Other Data

NOTICE OF INTENTION TO:

PERFORM REMEDIAL WORK ☐ PLUG AND ABANDON ☒
TEMPORARILY ABANDON ☐ CHANGE PLANS ☐
PULL OR ALTER CASING ☐
OTHER: ☐

SUBSEQUENT REPORT OF:

REMEDIAL WORK ☐ ALTERING CASING ☐
COMMENCE DRILLING OPNS. ☐ PLUG AND ABANDONMENT ☐
CASING TEST AND CEMENT JOB ☐
OTHER: ☐

12. Describe Proposed or Completed Operations (Clearly state all pertinent details, and give pertinent dates, including estimated date of starting any proposed work) SEE RULE 1103.

Plug and Abandon Estimated Start Date 6-24-91
Short string - pump 100 sx CI C down 2-7/8" ; Circulate to surface.
Long string - Set CIBP @ 3430'; cap with 2 sx CI C cement. Perf 1550' - 51'
(8 holes); Pump 450 sx CI C and circ to surface.
Cut casing 3' below surface and weld on steel plate; set abandonment marker;
restore location.

See attached procedure for details.

I hereby certify that the information above is true and complete to the best of my knowledge and belief.

SIGNATURE Connie L. Malik TITLE Reg. Compliance Rep. DATE 6/18/91

TYPE OR PRINT NAME Connie L. Malik

TELEPHONE NO. 915/686-5681

(This space for State Use)

APPROVED BY John A. Johnson TITLE INSPECTOR DATE 6-21-91

CONDITIONS OF APPROVAL, IF ANY:

New Mexico Y State No. 1
Shugart (Yates, 7 RV, Queen, GRBG) Field
Eddy County, New Mexico

Recommended Procedure

Project Engineer: J. M. Small

Office: (915) 686-5624
Residence: (915) 694-1932

1. MIRU PU. POH with rods & pump from short string.
2. ND wellhead. NU BOP. Unseat packer and POH with $\pm 3420'$ of 1.315" OD 1.8# PC tubing from long string.
3. RIH with bull plugged 1.315" PC tubing and pressure test to find possible leaks. Discard bad joints. POH.

SHORT STRING:

4. RU wireline company. RIH with a junk basket and gauge ring for 2 7/8" 6.4# casing to $\pm 2400'$. POH.
5. RIH with a packer on 1.315" 1.8# PC tubing and set at $\pm 2400'$. Pressure up on annulus to test for casing leaks. If a leak is found, contact project engineer. POH.
6. RU cement company. Pump one casing volume of fresh water (15 bbl) to establish injectability. Pump 100 sx of Class C cement with 4% CaCl_2 down 2 7/8" 6.4# casing. WOC. RIH with 1.315" 1.8# PC tubing and tag TOC. If TOC is below 10' from surface, use Class C cement and circulate to surface. POH.

LONG STRING:

7. RU wireline company. RIH with a junk basket and gauge ring for 2 7/8" 6.4# casing to $\pm 3450'$. POH.
8. RIH with a wireline set CIBP for 2 7/8" 6.4# casing and set at $\pm 3430'$. POH. Load hole and pressure test casing for leaks. If a leak is found, contact project engineer.
9. RU wireline company and RIH with a dump bailer and cap CIBP with 2 sx of Class C cement. POH.
10. RIH with open ended 1.315" OD PC tubing and load hole with 10 ppg gelled mud. POH.

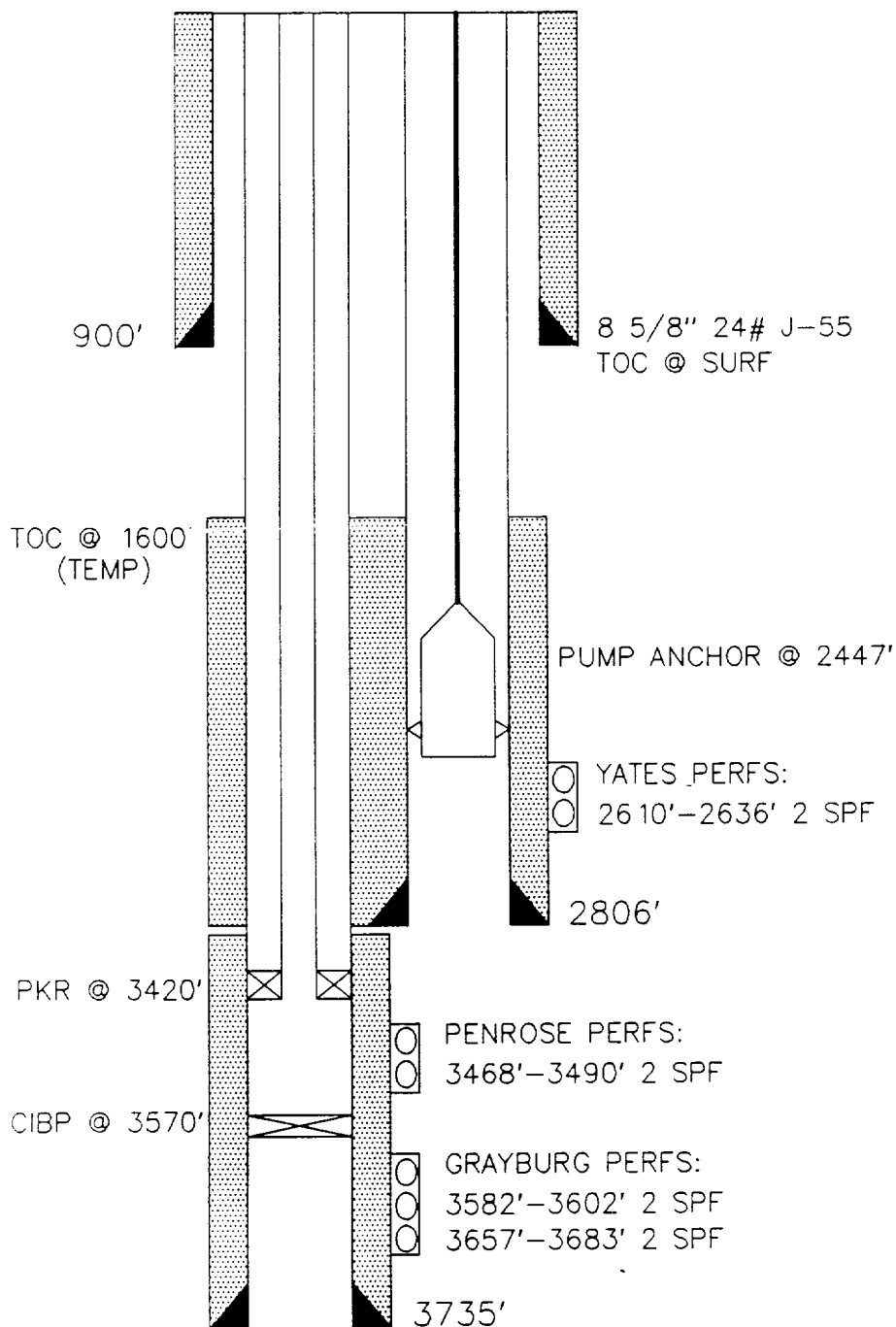
11. RIH with a 1 11/16" perf gun and perf 4 spf at 1550'-51' (8 holes).
12. RU cement company. Pump fresh water down 2 7/8" 6.4# casing to establish circulation. Pump 450 sx of Class C cement with 2% CaCl_2 and circulate to surface. WOC. Tag cement top with 1.315" tubing.
13. Cut casing 3' below surface and weld on steel plate. Set abandonment marker. Restore location.

Approved: _____
T. J. Harrington

Date: _____

JMS 6/6/91

NEW MEXICO Y STATE No. 1
SHUGART (Y,7R,QN,G) FIELD
EDDY COUNTY, NEW MEXICO



LONG STRING-INJ-PENROSE

TUBING:

1.315" OD PC 1.8# J-55 EVE 10RD
SET @ 3420'
BAKER 28A MODEL C INVERTIBLE
PKR @ 3420'

CASING:

2 7/8" 6.4# J-55
SET @ 3735'
TOC @ 2820' (CALC.)
BUTTRESS THREAD

SHORT STRING-PROD-YATES

TUBING:

NONE

CASING:

2 7/8" 6.4# J-55
SET @ 2806'
TOC @ 1600'
BUTTRESS THREAD

RODS/PUMP:

2" X 1 1/2" X 10' HF
SOFT PACK PUMP
ANCHOR SET @ 2447'
ROD SIZE 3/4"

JUNK IN HOLE UP TO 2494'