

HOODS OFFICE 000

1960 FEB 24 PM 3:41

P.O. Box 352
Midland, Texas

February 20, 1960

New Mexico Oil Conservation Commission
P.O. Box 2045
Hobbs, New Mexico

Re: Completion, TEXACO Inc.
U.S.A.-Federal Well No. 1
Culwin Queen Pool
Unit "C", Section 6, T-19-S, R-31-E
Eddy County, New Mexico

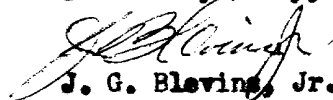
Attention: Mr. Joe D. Ramsey

Gentlemen:

Attached are packer setting affidavit, packer leakage test, and diagrammatic sketch of equipment installation for TEXACO Inc. U.S.A.-Federal Well No. 1, Culwin Queen Pool, Eddy County, New Mexico.

Approval to dually complete the subject well in the Culwin Queen and Culwin Yates Pools was granted by Order No. DC-874, dated December 30, 1959. The Yates formation was water productive, therefore the well was singly completed in the Culwin Queen Pool. A Baker Model "D" permanent-type packer had been set between the Zones prior to determining that the Yates would produce only water; therefore, due to the expense involved, it was decided to not squeeze off these perforations. Two tubing strings are still in the well and two pumping units installed; however, it is our plan to salvage the short tubing string to the Yates formation at the time the necessity arises to pull the long tubing string to the Queen completion.

Yours very truly,



J. G. Blevins, Jr.
Assistant District Superintendent

JGB,Jr-LAY
Attachments

NEW MEXICO OIL CONSERVATION COMMISSION
SOUTHEAST NEW MEXICO PACKER LEAKAGE TEST

FEB 29 1960

| | | | | | | | | |
|--------------------------------|---------------------------|-----------------|------------------------------------|--------------------------|-----------------------|---------------------------------------|--|--|
| Operator TEXACO Inc. | | | Lease U. S. A. - Federal | | | ARTESIAN WELL OFFICE OCC No. 1 | | |
| Location of Well | Unit C | Sec 6 | Twp 19-S | Rge 31-E | County Eddy | | | |
| | Name of Reservoir or Pool | | Type of Prod (Oil or Gas) | Method of Flow, Art Lift | Prod M (Tbg or Csg) | Choke Size | | |
| Upper Compl | Culwin (Yates) | | 100% water | Art. Lift | Tbg. | - | | |
| Lower Compl | Culwin (Queen) | | Oil | Art. Lift | Tbg. | - | | |

FLOW TEST NO. 1

Both zones shut-in at (hour, date): 10:30 AM, February 11, 1960

| | Upper Completion | Lower Completion |
|---|------------------------------------|------------------|
| Well opened at (hour, date): | <u>10:15 AM, February 12, 1960</u> | |
| Indicate by (X) the zone producing..... | <u>X</u> | |
| Pressure at beginning of test..... | <u>0 psi</u> | <u>361 psi</u> |
| Stabilized? (Yes or No)..... | <u>yes</u> | <u>yes</u> |
| Maximum pressure during test..... | <u>8 psi</u> | <u>362 psi</u> |
| Minimum pressure during test..... | <u>0 psi</u> | <u>361 psi</u> |
| Pressure at conclusion of test..... | <u>8 psi</u> | <u>362 psi</u> |
| Pressure change during test (Maximum minus Minimum)..... | <u>8 psi</u> | <u>1 psi</u> |
| Was pressure change an increase or a decrease?..... | <u>Increase</u> | <u>Increase</u> |
| Well closed at (hour, date): | <u>9:15 AM, February 13, 1960</u> | |
| Oil Production | Gas Production | |
| During Test: <u>0</u> bbls; Grav. <u>-</u> ; During Test <u>TSTM</u> MCF; GOR <u>-</u> | | |
| Remarks <u>Yates pumped 47 barrels of salt water and no oil. NMOC and offset operators notified by letter dated 2-9-60 prior to initiating this test.</u> | | |

FLOW TEST NO. 2

| | Upper Completion | Lower Completion |
|--|------------------------------------|------------------|
| Well opened at (hour, date): | <u>12:33 PM, February 13, 1960</u> | |
| Indicate by (X) the zone producing..... | | <u>X</u> |
| Pressure at beginning of test..... | <u>0 psi</u> | <u>362 psi</u> |
| Stabilized? (Yes or No)..... | <u>yes</u> | <u>yes</u> |
| Maximum pressure during test..... | <u>0 psi</u> | <u>362 psi</u> |
| Minimum pressure during test..... | <u>0 psi</u> | <u>0 psi</u> |
| Pressure at conclusion of test..... | <u>0 psi</u> | <u>41 psi</u> |
| Pressure change during test (Maximum minus Minimum)..... | <u>No change</u> | <u>362 psi</u> |
| Was pressure change an increase or a decrease?..... | <u>No change</u> | <u>Decrease</u> |
| Well closed at (hour, date): | <u>12:33 PM, February 14, 1960</u> | |
| Oil Production | Gas Production | |
| During Test: <u>12</u> bbls; Grav. <u>33.1</u> ; During Test <u>TSTM</u> MCF; GOR <u>-</u> | | |
| Remarks <u>Well pumped 30 barrels of water.</u> | | |

I hereby certify that the information herein contained is true and complete to the best of my knowledge.

Approved _____ 19
New Mexico Oil Conservation Commission

By M. L. Armstrong
Title _____

Operator TEXACO Inc.
By William P. Gort
Title Petroleum Engineer
Date February 19, 1960

1. The Contractor shall be continuously responsible for the accuracy of the data and information provided to the Government and shall be responsible for the accuracy of the data and information provided to the Government.

[illegible]

NEW MEXICO OIL CONSERVATION COMMISSION
SANTA FE, NEW MEXICO

6-1-56

PACKER-SETTING AFFIDAVIT
(Dual Completions)

STATE OF New Mexico)
County of Eddy) ss

James M. Franklin, being first duly sworn according to law, upon his oath deposes and says:

That he is of lawful age and has full knowledge of the facts herein below set out.

That he is employed by TEXACO Inc. in the capacity of Petroleum Engineer and as such is its authorized agent.

That on December 19, 1959, he personally supervised the setting of a Baker Model "D" Packer in TEXACO Inc.'s
(Make and Type of Packer) (Operator)

U. S. A. Federal Well No. 1, located in Unit
(lease)
Letter C, Section 6, Township 19-S, Range 31-E, NMPM,
Eddy County, New Mexico.

That said packer was set at a subsurface depth of 3090 feet,
said depth measurement having been furnished by Ram Guns, Inc.

That the purpose of setting this packer was to effect a seal in the annular space between the two strings of pipe where the packer was set so as to prevent the commingling, within the well-bore, of fluids produced from a stratum below the packer with fluids produced from a stratum above the packer. That this packer was properly set and that it did, when set, effectively and absolutely seal off the annular space between the two strings of pipe where it was set in such manner as that it prevented any movement of fluids across the packer.

TEXACO Inc.
(Company)

James M. Franklin
(its Agent)

Subscribed and sworn to before me this the 18 day of Jan, AD,
1960.

Arthur B. Williams
Notary Public in and for the County
of Ala

My Commission Expires April 12, 1960.

Memo

From

M. L. Armstrong
Supervisor District #2

To Dem

I am only signing the zone
that I am sending to you.

If it is O.K. to sign and
distribute the rest, let me
know

MAL

Memo

From

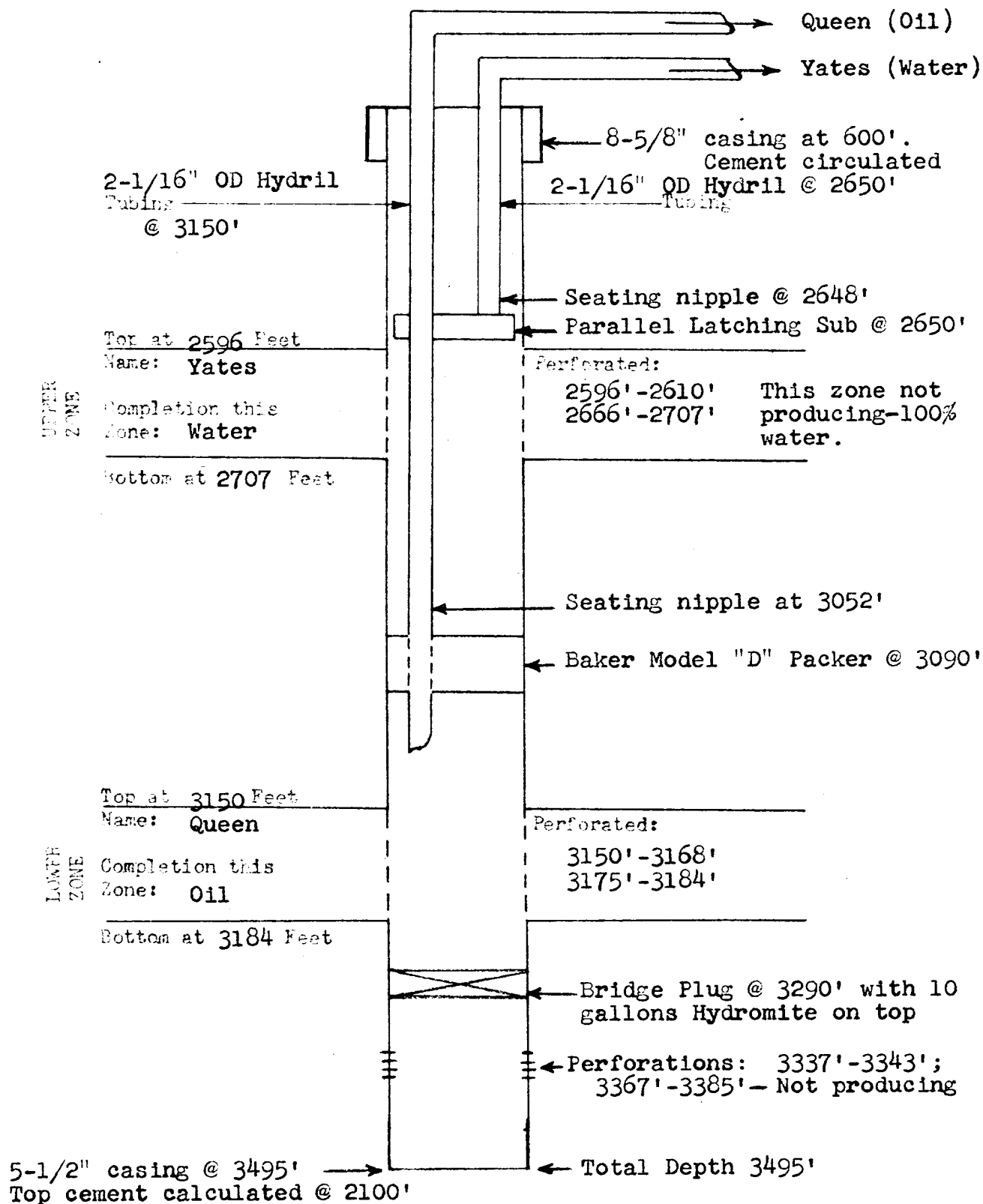
Daniel S. Nutter
Chief Engineer

To Moser -

Re your note on the
Terraco dual completion.

The packer leakage
test appears to be
OK. OK to go
ahead and approve
it and distribute.

DIAGRAMMATIC SKETCH SHOWING DUAL COMPLETION INSTALLATION

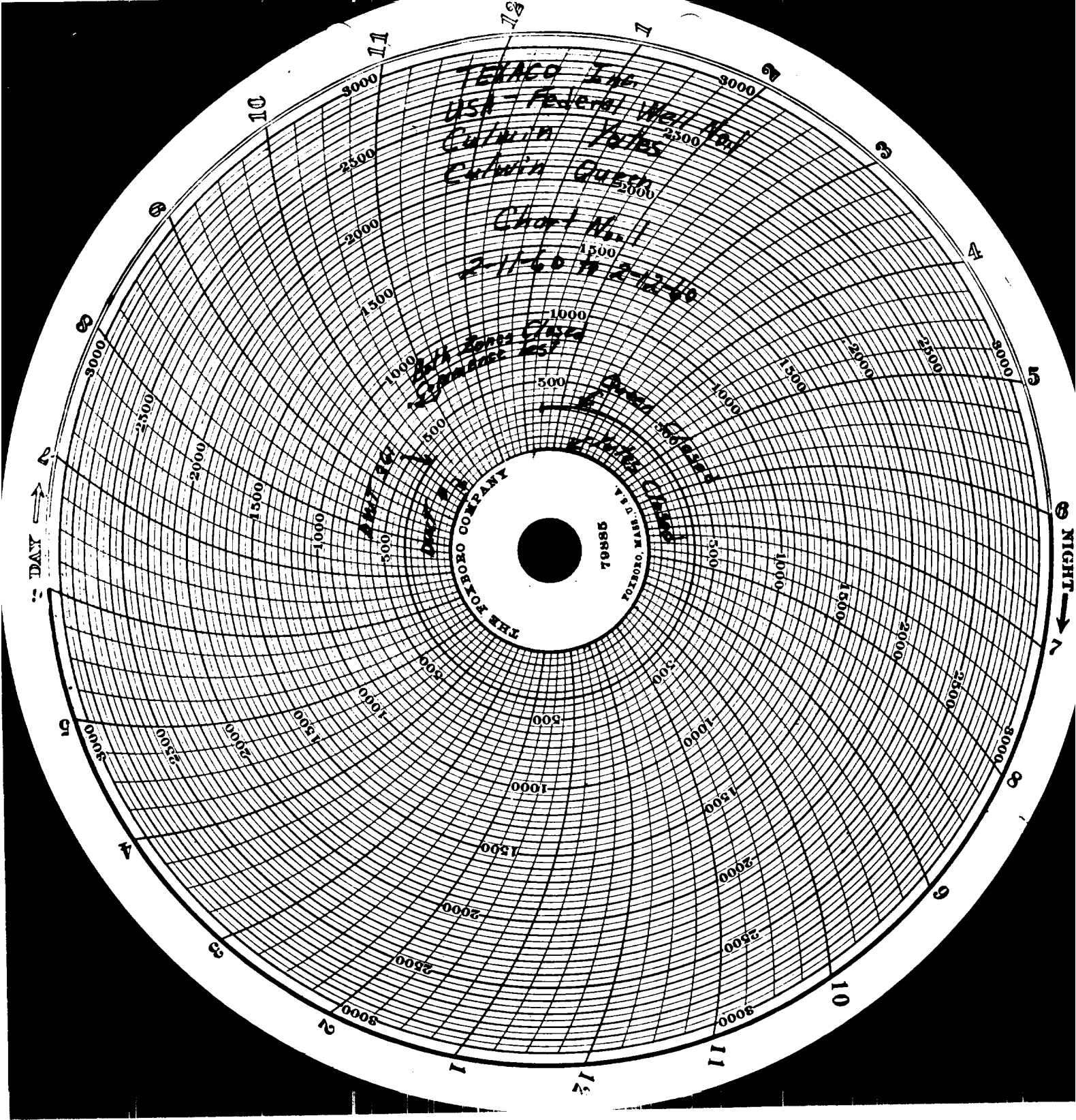


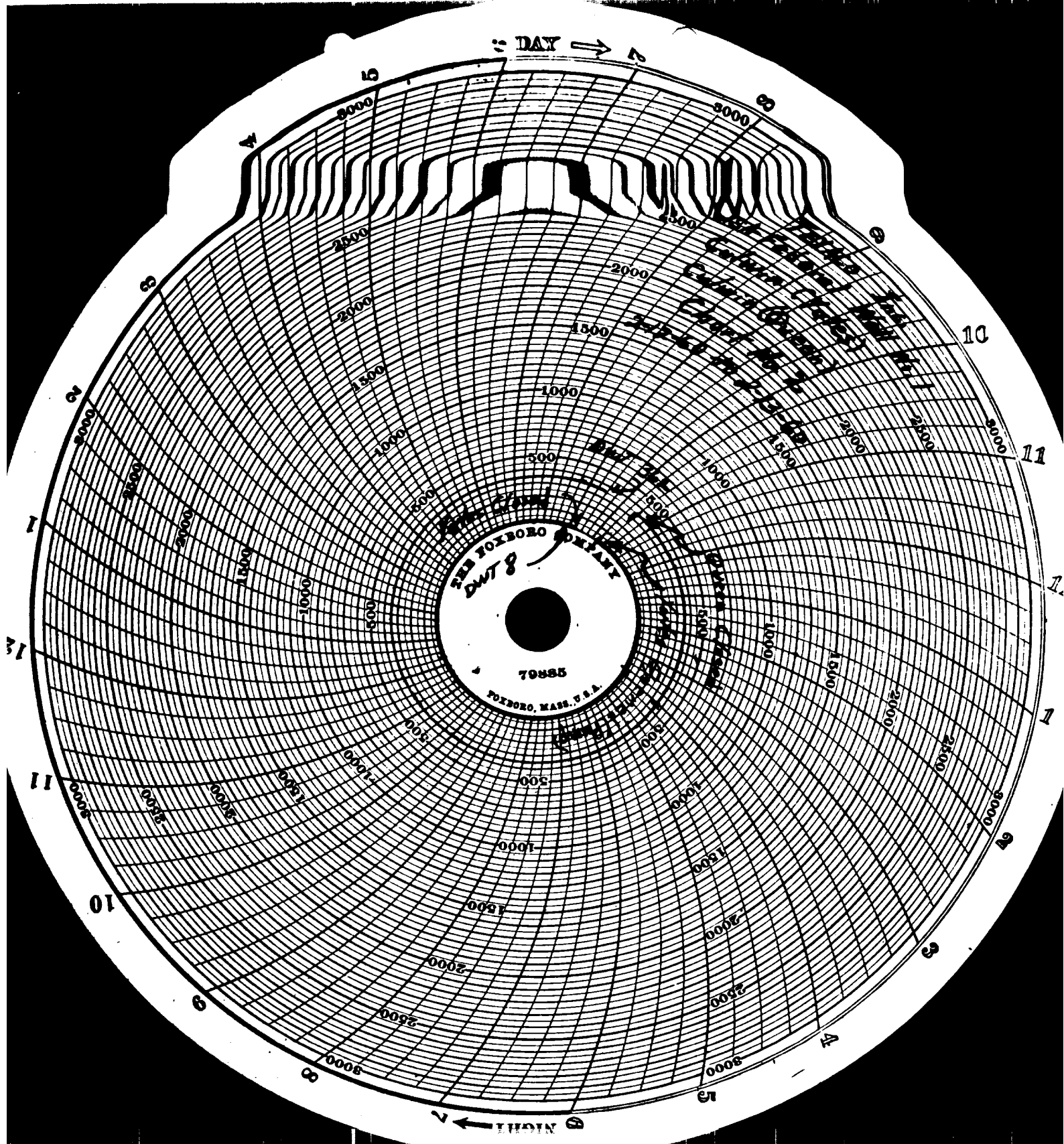
COMPANY: TEXACO Inc.

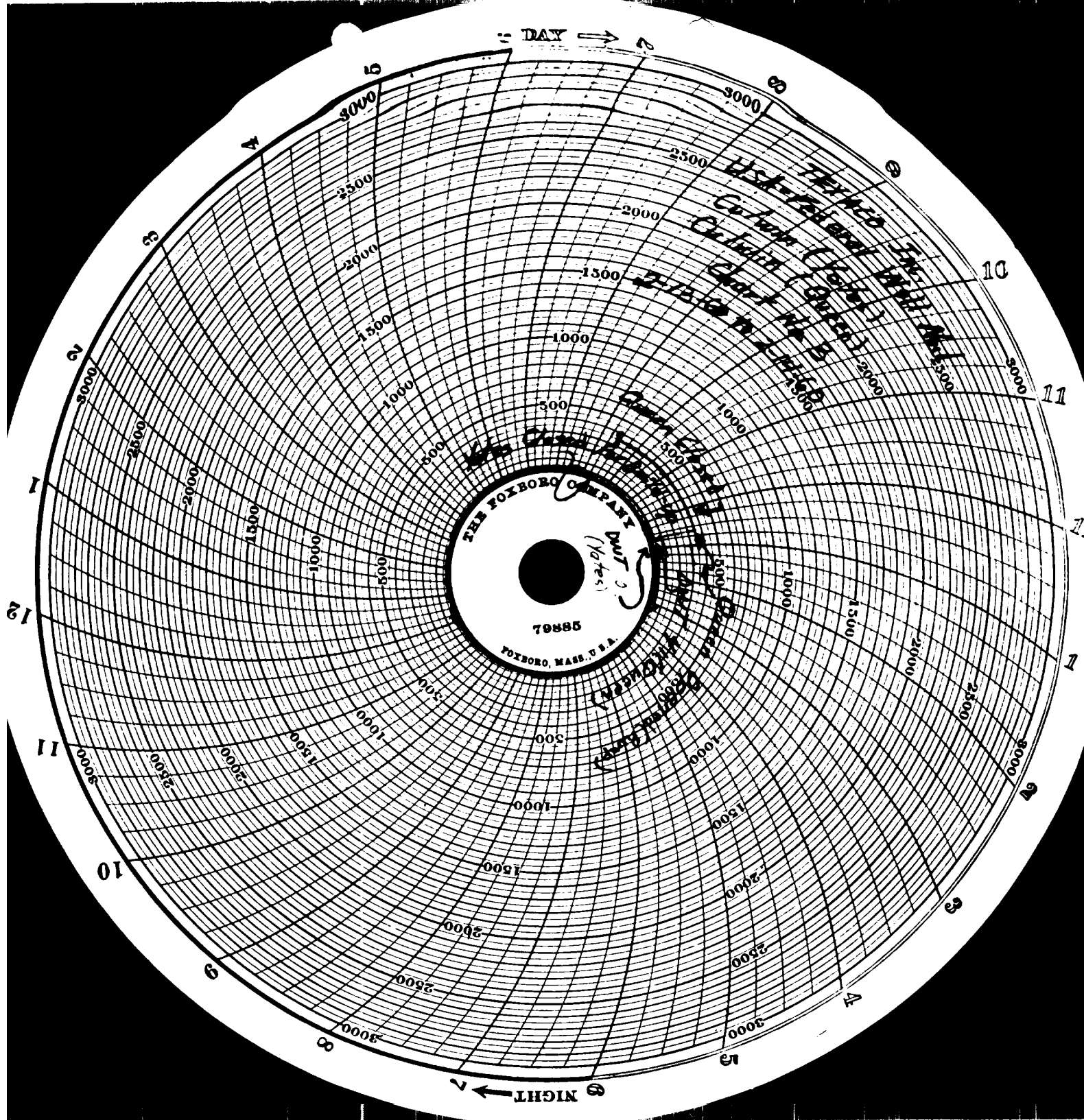
LEASE: U. S. A.-Federal Well No. 1

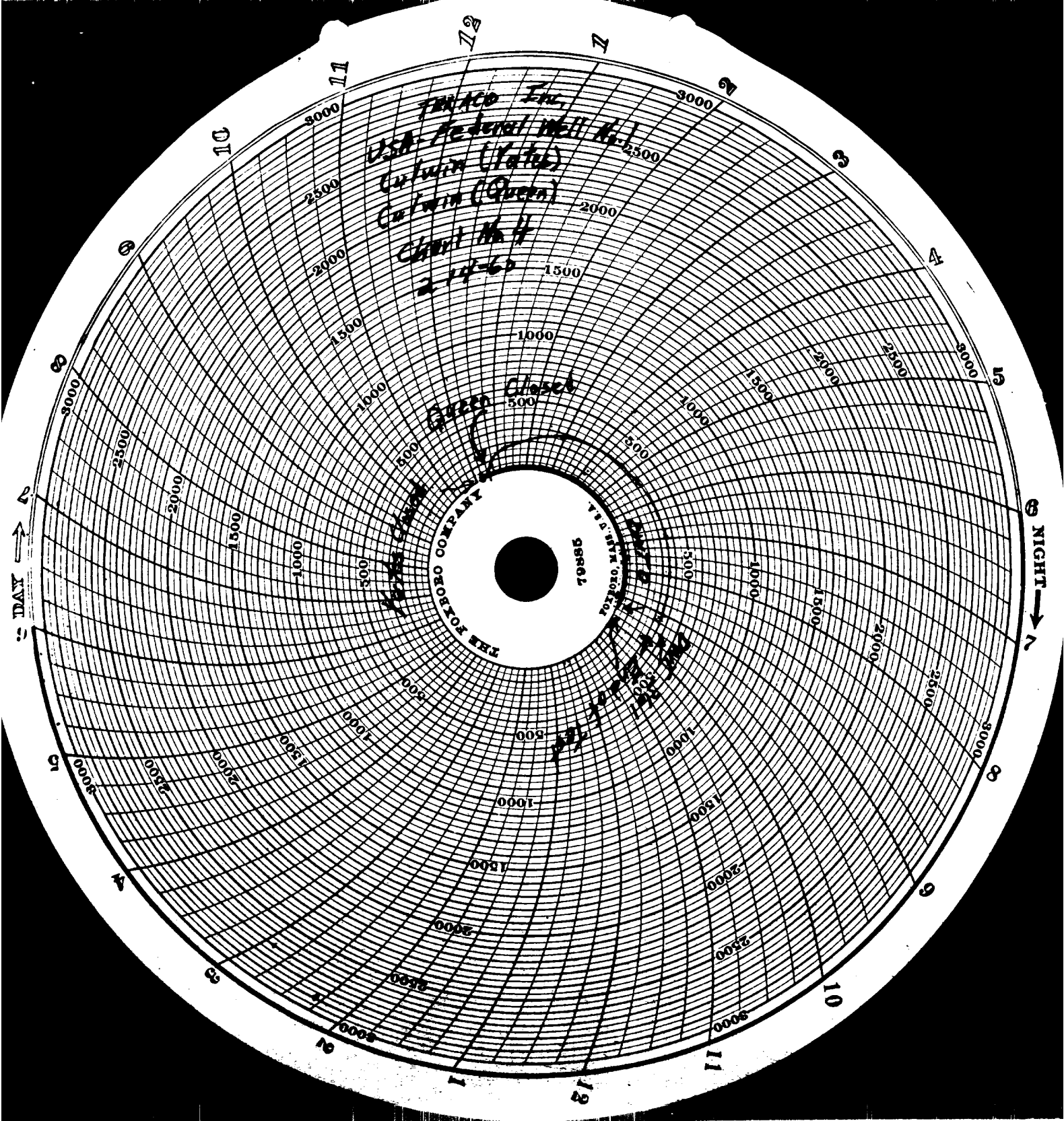
FIELD: Culwin and Undesignated Yates

DATE: February 19, 1960









| OIL CONSERVATION COMMISSION | | |
|-----------------------------|------|---|
| DISTRICT OFFICE | | |
| DATE | 1944 | 2 |
| DISTRICT | | |
| TO | | |
| FROM | | |
| REPORT | 1 | |
| REPORT | 1 | |
| EXPLORATION OFFICE | | |
| STATE LAND OFFICE | | |
| U. S. G. S. | | |
| TRANSPORTER | | |
| FILE | 1 | ✓ |
| BUREAU OF MINES | | |