

NUMBER OF COPIES RECEIVED		6
DISTRIBUTION		
SANTA FE	FILE	1
U.S.G.S.	LAND OFFICE	1
TRANSPORTER	OIL GAS	
PROPRATION OFFICE	OPERATOR	1

NEW MEXICO OIL CONSERVATION COMMISSION
Santa Fe, New Mexico

Form C-101
Revised (12/1/55)
30-015-10105

NOTICE OF INTENTION TO DRILL

Notice must be given to the District Office of the Oil Conservation Commission and approval obtained before drilling or recompletion begins. If changes in the proposed plan are considered advisable, a copy of this notice showing such changes will be returned to the sender. Submit this notice in QUINTUPLICATE. One copy will be returned following approval. See additional instructions in Rules and Regulations of the Commission. If State Land submit 6 Copies Attach Form C-128 in triplicate to first 3 copies of form C-101

Hobbs, New Mexico

January 28, 1964

(Place)

(Date)

OIL CONSERVATION COMMISSION
SANTA FE, NEW MEXICO

Gentlemen:

You are hereby notified that it is our intention to commence the Drilling of a well to be known as

Sunray III Oil Company

(Company or Operator)

N.M. State #0"

(Lease)

, Well No. **6**, in **H** The well is

(Unit)

located **990'** feet from the **South** line and **1900** feet from the

West

line of Section **13**, T. **19S**, R. **28E**, NMPM.

(GIVE LOCATION FROM SECTION LINE **East** **William Queen Grayburg** Pool, **Edgy** County

If State Land the Oil and Gas Lease is No. **08-784**

If patented land the owner is

Address

We propose to drill well with drilling equipment as follows:

Q-7D Cable Tools

The status of plugging bond is **approved**

Drilling Contractor **Cactus Drilling Company**

P.O. Drawer 71

San Angelo, Texas

We intend to complete this well in the **Queen - Grayburg**

formation at an approximate depth of **2300'** feet.

CASING PROGRAM

We propose to use the following strings of Casing and to cement them as indicated:

Size of Hole	Size of Casing	Weight per Foot	New or Second Hand	Depth	Sacks Cement
Contractor	8 5/8	21 1/2	New	455'	Sufficient to circ
Contractor	4 1/2	9.54	New	2300'	250 sk

If changes in the above plans become advisable we will notify you immediately.

ADDITIONAL INFORMATION (If recompletion give full details of proposed plan of work.)

JAN 29 1964

Approved....., 19.....
Except as follows:

OIL CONSERVATION COMMISSION

By M. L. Armstrong

Sincerely yours,

Sunray III Oil Company
(Company or Operator)

By V.R. Mayabb

Position District Engineer

Send Communications regarding well to

Name G.T. McClanahan

Address Box 128, Hobbs, New Mexico

NEW MEXICO OIL CONSERVATION COMMISSION
WELL LOCATION AND ACREAGE DEDICATION PLAT

FORM C-120
Revised 5/1/57

SEE INSTRUCTIONS FOR COMPLETING THIS FORM ON THE REVERSE SIDE

SECTION A

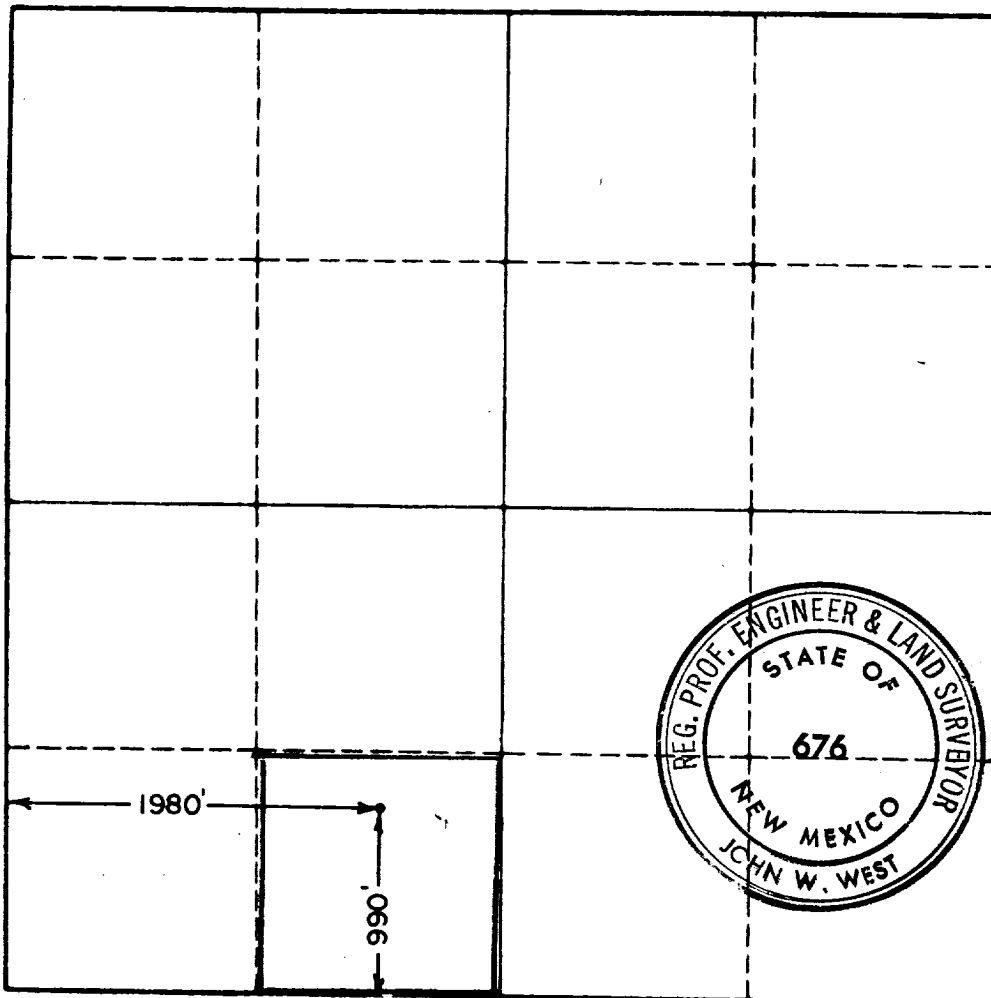
Operator SUNRAY DX OIL COMPANY		Lease STATE "O"		Well No. 6
Unit Letter N	Section 13	Township 19 SOUTH	Range 28 EAST	County EDDY
Actual Footage Location of Well: 990 feet from the SOUTH line and 1980 feet from the WEST line				
Ground Level Elev. 3385	Producing Formation Queen-Cragburg		Pool East Hillman Queen-Cragburg	Dedicated Acreage: 40 Acres

1. Is the Operator the only owner in the dedicated acreage outlined on the plat below? YES ☒ NO ☐ ("Owner" means the person who has the right to drill into and to produce from any pool and to appropriate the production either for himself or for himself and another. (65-3-29 (e) NMSA 1935 Comp.)
2. If the answer to question one is "no," have the interests of all the owners been consolidated by communitization agreement or otherwise? YES ☐ NO ☐ If answer is "yes," Type of Consolidation _____
3. If the answer to question two is "no," list all the owners and their respective interests below:

Owner	Land Description

RECEIVED
JAN 29 1964
D. B. C.
ARTESIA, OFFICE

SECTION B



CERTIFICATION

I hereby certify that the information in SECTION A above is true and complete to the best of my knowledge and belief.

Name **H. Maynor**
Position **District Engineer**
Company **SUNRAY DX OIL COMPANY**
Date **January 20, 1964**

I hereby certify that the well location shown on the plat in SECTION B was plotted from field notes of actual surveys made by me or under my supervision, and that the same is true and correct to the best of my knowledge and belief.

Date Surveyed **1-27-64**
Registered Professional Engineer and/or Land Surveyor, **JOHN W. WEST**
Certificate No. **John W. West**
N. M. - P. E. & L. S. NO. 676

0 330 660 990 1320 1650 1980 2310 2640 2000 1500 1000 500 0