

UNITED STATES  
DEPARTMENT OF THE INTERIOR  
GEOLOGICAL SURVEY

(Other instruction  
reverse side)

*Copy to J. J.*

APPLICATION FOR PERMIT TO DRILL, DEEPEN, OR PLUG BACK

1a. TYPE OF WORK

DRILL ☒

DEEPEN ☐

PLUG BACK ☐

b. TYPE OF WELL

OIL  
WELL ☒

GAS  
WELL ☐

OTHER ☐

SINGLE  
ZONE ☐

MULTIPLE  
ZONE ☐

2. NAME OF OPERATOR

Gulf Oil Corporation

3. ADDRESS OF OPERATOR

Box 670, Hobbs, New Mexico

4. LOCATION OF WELL (Report location clearly and in accordance with any State requirements.)\*

At surface

2310' FNL, 660' FWL, Section 22, 18-S, 31-E

At proposed prod. zone

14. DISTANCE IN MILES AND DIRECTION FROM NEAREST TOWN OR POST OFFICE\*

10. DISTANCE FROM PROPOSED\*

LOCATION TO NEAREST  
PROPERTY OR LEASE LINE, FT.  
(Also to nearest drlg. unit line, if any)

16. NO. OF ACRES IN LEASE

640

17. NO. OF ACRES ASSIGNED  
TO THIS WELL

40

18. DISTANCE FROM PROPOSED LOCATION\*  
TO NEAREST WELL, DRILLING, COMPLETED,  
OR APPLIED FOR, ON THIS LEASE, FT.

19. PROPOSED DEPTH

5300'

20. ROTARY OR CABLE TOOLS

Rotary

21. ELEVATIONS (Show whether DF, RT, GR, etc.)

22. APPROX. DATE WORK WILL START\*

June 22, 1966

23.

PROPOSED CASING AND CEMENTING PROGRAM

SIZE OF HOLE	SIZE OF CASING	WEIGHT PER FOOT	SETTING DEPTH	QUANTITY OF CEMENT
12-1/4"	8-5/8"	21#	650'	Circulate
7-7/8"	5-1/2"	11#	5300'	700 Sacks (Base of Salt)

RECEIVED

JUN 21 1966

O. C. C.  
ARTESIA, OFFICE

RECEIVED  
JUN 20 1966  
U. S. GEOLOGICAL SURVEY  
ARTESIA, NEW MEXICO

IN ABOVE SPACE DESCRIBE PROPOSED PROGRAM: If proposal is to deepen or plug back, give data on present productive zone and proposed new productive zone. If proposal is to drill or deepen directionally, give pertinent data on subsurface locations and measured and true vertical depths. Give blowout preventer program, if any.

24.

SIGNED

TITLE Area Petroleum Engineer

DATE June 17, 1966

(This space for Federal or State office use)

PERMIT NO.

APPROVAL DATE

APPROVED BY

TITLE

DATE

CONDITIONS OF APPROVAL

APPROVED  
JUN 20 1966  
H. L. BECKMAN  
ACTING DISTRICT ENGINEER

\*See Instructions On Reverse Side

30-010-10011

NEW MEXICO OIL CONSERVATION COMMISSION  
WELL LOCATION AND ACREAGE DEDICATION PLAT

Form C-102  
Supersedes C-128  
Effective 1-1-65

All distances must be from the outer boundaries of the Section.

Operator <b>GULF OIL CORP.</b>		Lease <i>Littlefield "Federal AB" Littlefield</i>		Well No. <b>4</b>
Unit Letter <b>E</b>	Section <b>22</b>	Township <b>18 SOUTH</b>	Range <b>31 EAST</b>	County <b>EDDY</b>
Actual Footage Location of Well: <b>2310</b> feet from the <b>NORTH</b> line and <b>660</b> feet from the <b>WEST</b> line				
Ground Level Elev:	Producing Formation <b>Delaware</b>	Pool <i>under</i> <b>Delaware</b>	Dedicated Acreage: <b>40</b> Acres	

- Outline the acreage dedicated to the subject well by colored pencil or hatchure marks on the plat below.
- If more than one lease is dedicated to the well, outline each and identify the ownership thereof (both as to working interest and royalty).
- If more than one lease of different ownership is dedicated to the well, have the interests of all owners been consolidated by communitization, unitization, force-pooling, etc?

**RECEIVED**

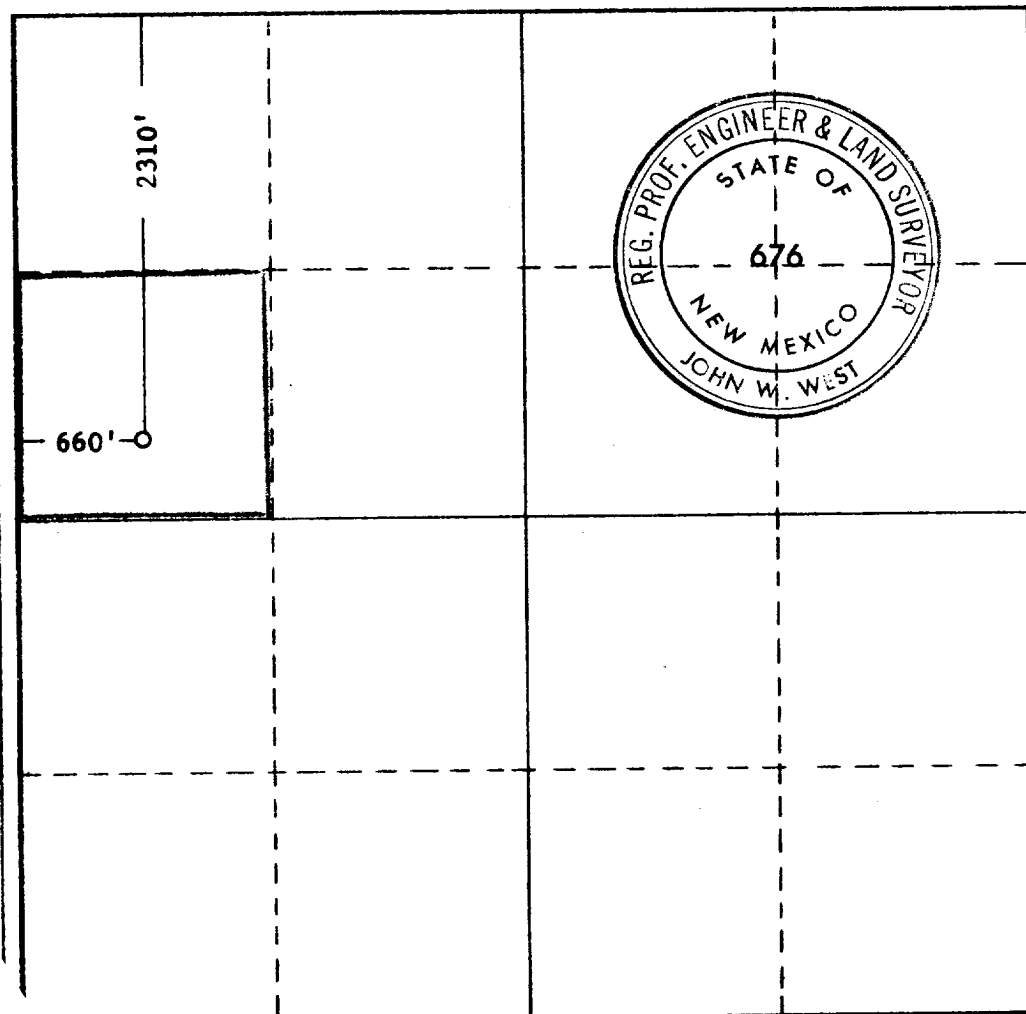
**JUN 21 1966**

☐ Yes ☐ No If answer is "yes," type of consolidation \_\_\_\_\_

If answer is "no," list the owners and tract descriptions which have actually been consolidated (Use reverse side of this form if necessary.) \_\_\_\_\_

**P. C. C.  
ARTESIA, OFFICE**

No allowable will be assigned to the well until all interests have been consolidated (by communitization, unitization, forced-pooling, or otherwise) or until a non-standard unit, eliminating such interests, has been approved by the Commission.



CERTIFICATION

I hereby certify that the information contained herein is true and complete to the best of my knowledge and belief.

ORIGINAL SIGNED BY

Name **L. A. TURNER**

Position **Area Petroleum Engineer**

Company **Gulf Oil Corporation**

Date **June 17, 1966**

I hereby certify that the well location shown on this plat was plotted from field notes of actual surveys made by me or under my supervision, and that the same is true and correct to the best of my knowledge and belief.

Date Surveyed

**JUNE 14, 1966**

Registered Professional Engineer and/or Land Surveyor

*John W. West*  
Certificate No. **676**

130 660 190 1220 1650 1980 2310 2640 2000 1500 1000 500 0

