

**NEW MEXICO OIL CONSERVATION COMMISSION
WELL LOCATION AND ACREAGE DEDICATION PLAT**

Form C-102
Supersedes C-128
Effective 1-1-65

All distances must be from the outer boundaries of the Section.

Operator WESTERN OIL FIELDS, INC.			Lease STATE OG-16		Well No. 1
Unit Letter K	Section 10	Township 19 SOUTH	Range 29 EAST	County EDDY	
Actual Footage Location of Well: <div style="display: flex; justify-content: space-between;"> 1650 feet from the SOUTH line and 1650 feet from the WEST line </div>					
Ground Level Elev. Not Determined	Producing Formation Pasen	Pool Turkey Track	Dedicated Acreage: 40 Acres		

1. Outline the acreage dedicated to the subject well by colored pencil or hatchure marks on the plat below.
2. If more than one lease is dedicated to the well, outline each and identify the ownership thereof (both as to working interest and royalty).
3. If more than one lease of different ownership is dedicated to the well, have the interests of all owners been consolidated by communitization, unitization, force-pooling, etc?

☐ Yes ☐ No If answer is "yes," type of consolidation _____

If answer is "no," list the owners and tract descriptions which have actually been consolidated. (Use reverse side of this form if necessary.) _____

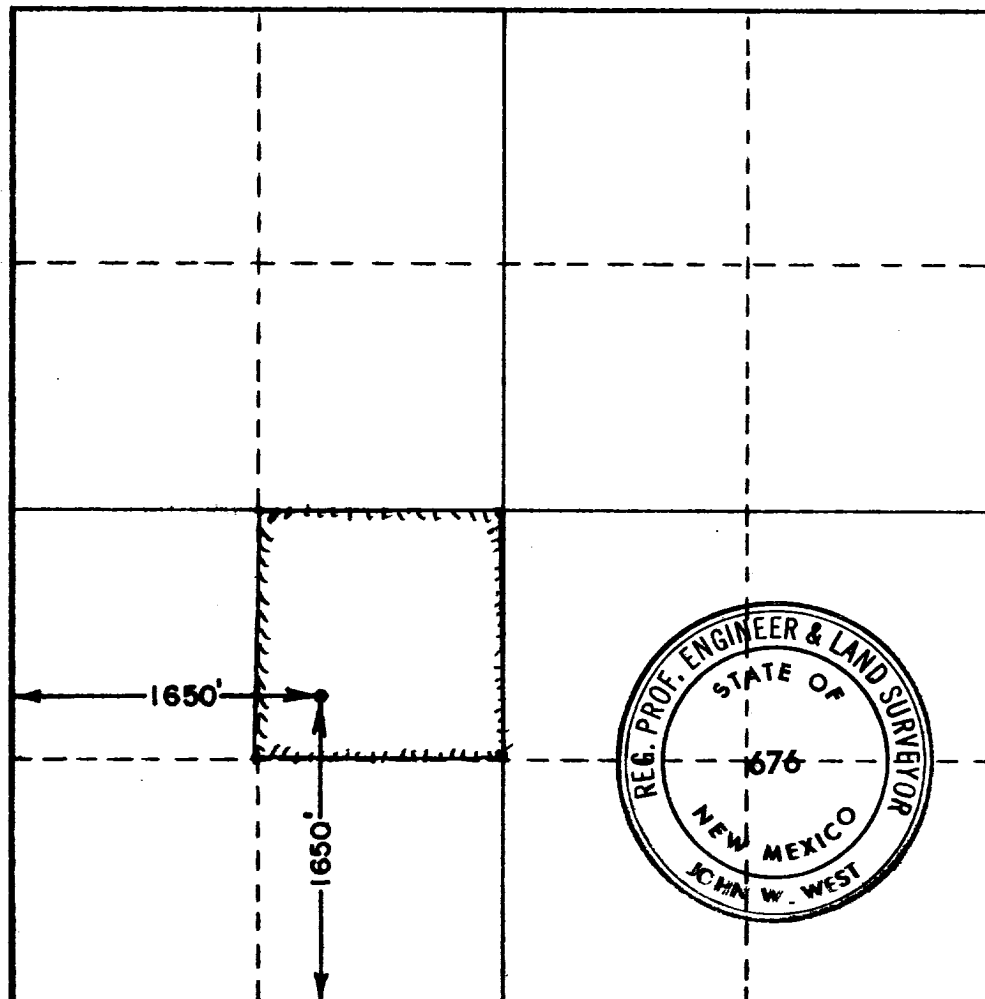
No allowable will be assigned to the well until all interests have been consolidated (by communitization, unitization, forced-pooling, or otherwise) or until a non-standard unit, eliminating such interests, has been approved by the Commission.

RECEIVED

JUN 28 1966

O. C. C.

ARTERIA OFFICE



CERTIFICATION

I hereby certify that the information contained herein is true and complete to the best of my knowledge and belief.

Name Paul White
Position Division Engineer
Company Western Oil Fields, Inc.
Date 6-27-66

I hereby certify that the well location shown on this plat was plotted from field notes of actual surveys made by me or under my supervision, and that the same is true and correct to the best of my knowledge and belief.

Date Surveyed
JUNE 22, 1966

Registered Professional Engineer and/or Land Surveyor

John W. West
Certificate No. _____

NM PE & LS No. 676

